

RESOLUTION 86-78

WHEREAS, a petition has been filed by qualified land owners to abandon or vacate portions of a County easement hereinafter described; and,

WHEREAS, this Board has heretofore passed a resolution setting a public hearing to consider the petition, and Notice of Public Hearing has been duly published and Proof of Publication has been filed with this Board; and,

WHEREAS, it appears that there are no objections and the averments of said petition are true,

NOW THEREFORE, IN CONSIDERATION OF THE PREMISES, BE IT RESOLVED BY THE BOARD OF COUNTY COMMISSIONERS OF ST. JOHNS COUNTY, FLORIDA, AS FOLLOWS:

1.

That the following described portions of County easement to wit:

Ten foot (10') utilities and drainage easement and any and all other easements along the common lot line of Lots 28 and 29, Greenbriar, Section One, according the map thereof recorded in Map Book 14, Pages 57 and 58, Public Records of St. Johns County, Florida.

be, and the same are hereby vacated, released, abandoned, discontinued and closed, and this Board hereby renounces and disclaims any right of the County and the Public in and to the above described portion of County easement, and any land in connection therewith.

2.

That a notice of the adoption of this resolution is hereby directed to be published and the proof thereof recorded in the official public records of St. Johns County.

DATED this 8th day of July, 1986.

BOARD OF COUNTY COMMISSIONERS
OF ST. JOHNS COUNTY, FLORIDA

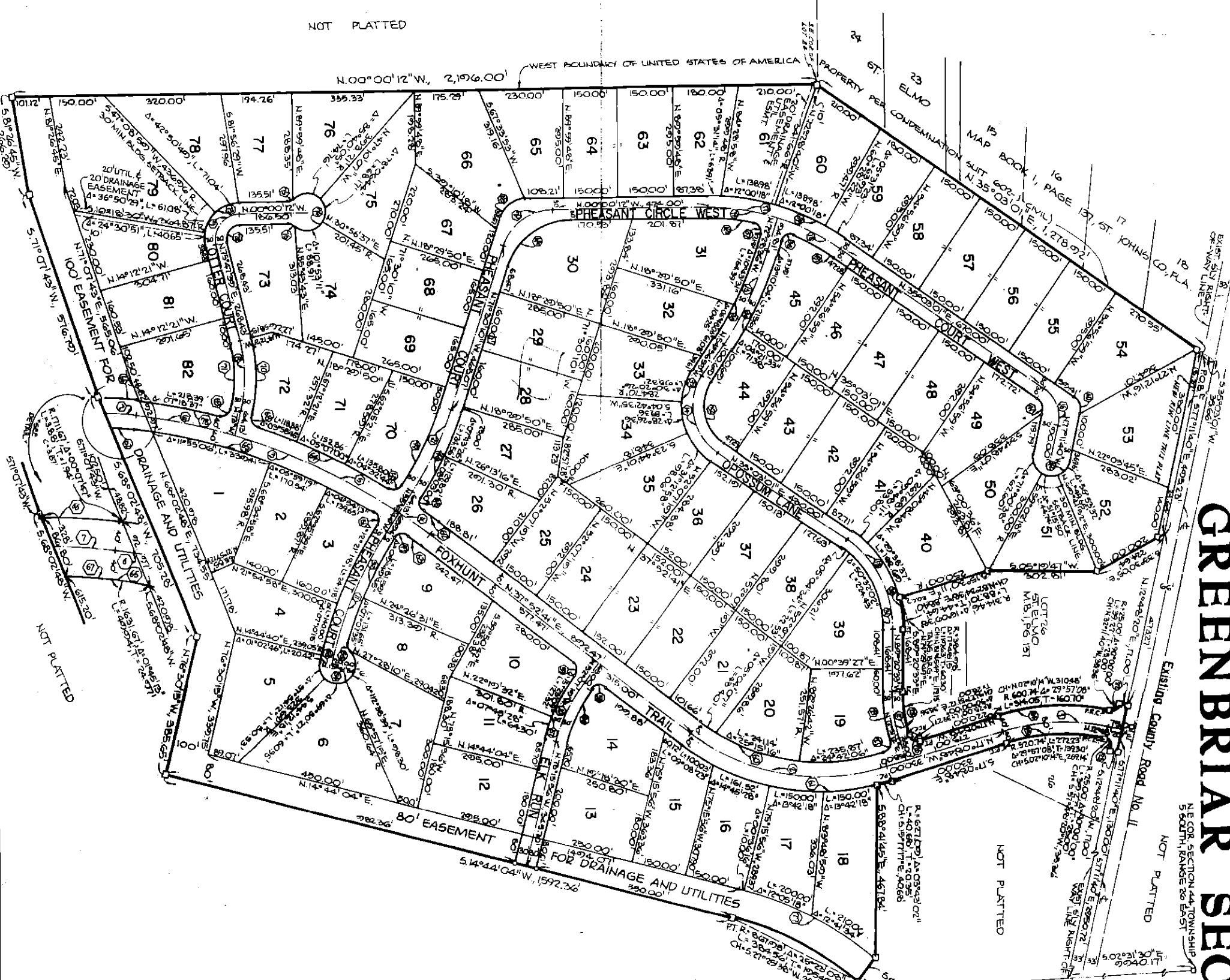
BY: Francis N. Bulbaker
Chairman

ATTEST: CARL "BUD" MARKEL, CLERK

BY: Cheryl Kent
Deputy Clerk

N.00°00'12"W, 2,196.00'

WEST BOUNDARY OF UNITED STATES OF AMERICA



GREENBRIAR SECTION ONE

MAP BOOK 14 PAGE 58

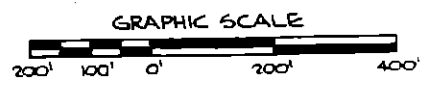
GENERAL NOTES:

- P.R.M. DE NOTES 4" x 4" CONCRETE MONUMENT
- P.C.P. DE NOTES IRON PIPE
- RADIAL LOT LINES DELECTED BY R.
- THE MINIMUM FRONT BUILDING SETBACK LINE IS 25.00 FEET EXCEPT AS INDICATED OTHERWISE ON LOTS 51 AND 79.
- A 750 FOOT UTILITARIAN DRAINAGE EASEMENT IS RESERVED ON ALL SIDE AND REAR LOT LINES AND/OR AS SHOWN OTHERWISE EXCEPT THOSE LINES ADJACENT TO STREET RIGHT OF WAIS.

BEARING BASIS:
 BEARINGS REFER TO THE COORDINATE AND LINES IN THE TRANSIT INSTRUMENT SYSTEM
 OR PLANE COORDINATES AS ESTABLISHED BY THE UNITED STATES COAST AND GEODETIC
 SURVEY FOR THE EASTERN PENINSULAR PARTITION OF FLORIDA.

NO.	RADIUS	DELTA	ARC	TANGENT	CHORD	CENT BEARING
1	150.00	30.00	30.00	150.00	300.00	S 90° 00' 00" W
2	150.00	30.00	30.00	150.00	300.00	S 90° 00' 00" W
3	150.00	30.00	30.00	150.00	300.00	S 90° 00' 00" W
4	150.00	30.00	30.00	150.00	300.00	S 90° 00' 00" W
5	150.00	30.00	30.00	150.00	300.00	S 90° 00' 00" W
6	150.00	30.00	30.00	150.00	300.00	S 90° 00' 00" W
7	150.00	30.00	30.00	150.00	300.00	S 90° 00' 00" W
8	150.00	30.00	30.00	150.00	300.00	S 90° 00' 00" W
9	150.00	30.00	30.00	150.00	300.00	S 90° 00' 00" W
10	150.00	30.00	30.00	150.00	300.00	S 90° 00' 00" W
11	150.00	30.00	30.00	150.00	300.00	S 90° 00' 00" W
12	150.00	30.00	30.00	150.00	300.00	S 90° 00' 00" W
13	150.00	30.00	30.00	150.00	300.00	S 90° 00' 00" W
14	150.00	30.00	30.00	150.00	300.00	S 90° 00' 00" W
15	150.00	30.00	30.00	150.00	300.00	S 90° 00' 00" W
16	150.00	30.00	30.00	150.00	300.00	S 90° 00' 00" W
17	150.00	30.00	30.00	150.00	300.00	S 90° 00' 00" W
18	150.00	30.00	30.00	150.00	300.00	S 90° 00' 00" W
19	150.00	30.00	30.00	150.00	300.00	S 90° 00' 00" W
20	150.00	30.00	30.00	150.00	300.00	S 90° 00' 00" W
21	150.00	30.00	30.00	150.00	300.00	S 90° 00' 00" W
22	150.00	30.00	30.00	150.00	300.00	S 90° 00' 00" W
23	150.00	30.00	30.00	150.00	300.00	S 90° 00' 00" W
24	150.00	30.00	30.00	150.00	300.00	S 90° 00' 00" W
25	150.00	30.00	30.00	150.00	300.00	S 90° 00' 00" W
26	150.00	30.00	30.00	150.00	300.00	S 90° 00' 00" W
27	150.00	30.00	30.00	150.00	300.00	S 90° 00' 00" W
28	150.00	30.00	30.00	150.00	300.00	S 90° 00' 00" W
29	150.00	30.00	30.00	150.00	300.00	S 90° 00' 00" W
30	150.00	30.00	30.00	150.00	300.00	S 90° 00' 00" W
31	150.00	30.00	30.00	150.00	300.00	S 90° 00' 00" W
32	150.00	30.00	30.00	150.00	300.00	S 90° 00' 00" W
33	150.00	30.00	30.00	150.00	300.00	S 90° 00' 00" W
34	150.00	30.00	30.00	150.00	300.00	S 90° 00' 00" W
35	150.00	30.00	30.00	150.00	300.00	S 90° 00' 00" W
36	150.00	30.00	30.00	150.00	300.00	S 90° 00' 00" W
37	150.00	30.00	30.00	150.00	300.00	S 90° 00' 00" W
38	150.00	30.00	30.00	150.00	300.00	S 90° 00' 00" W
39	150.00	30.00	30.00	150.00	300.00	S 90° 00' 00" W
40	150.00	30.00	30.00	150.00	300.00	S 90° 00' 00" W
41	150.00	30.00	30.00	150.00	300.00	S 90° 00' 00" W
42	150.00	30.00	30.00	150.00	300.00	S 90° 00' 00" W
43	150.00	30.00	30.00	150.00	300.00	S 90° 00' 00" W
44	150.00	30.00	30.00	150.00	300.00	S 90° 00' 00" W
45	150.00	30.00	30.00	150.00	300.00	S 90° 00' 00" W
46	150.00	30.00	30.00	150.00	300.00	S 90° 00' 00" W
47	150.00	30.00	30.00	150.00	300.00	S 90° 00' 00" W
48	150.00	30.00	30.00	150.00	300.00	S 90° 00' 00" W
49	150.00	30.00	30.00	150.00	300.00	S 90° 00' 00" W
50	150.00	30.00	30.00	150.00	300.00	S 90° 00' 00" W
51	150.00	30.00	30.00	150.00	300.00	S 90° 00' 00" W
52	150.00	30.00	30.00	150.00	300.00	S 90° 00' 00" W
53	150.00	30.00	30.00	150.00	300.00	S 90° 00' 00" W
54	150.00	30.00	30.00	150.00	300.00	S 90° 00' 00" W
55	150.00	30.00	30.00	150.00	300.00	S 90° 00' 00" W
56	150.00	30.00	30.00	150.00	300.00	S 90° 00' 00" W
57	150.00	30.00	30.00	150.00	300.00	S 90° 00' 00" W
58	150.00	30.00	30.00	150.00	300.00	S 90° 00' 00" W
59	150.00	30.00	30.00	150.00	300.00	S 90° 00' 00" W
60	150.00	30.00	30.00	150.00	300.00	S 90° 00' 00" W
61	150.00	30.00	30.00	150.00	300.00	S 90° 00' 00" W
62	150.00	30.00	30.00	150.00	300.00	S 90° 00' 00" W
63	150.00	30.00	30.00	150.00	300.00	S 90° 00' 00" W
64	150.00	30.00	30.00	150.00	300.00	S 90° 00' 00" W
65	150.00	30.00	30.00	150.00	300.00	S 90° 00' 00" W
66	150.00	30.00	30.00	150.00	300.00	S 90° 00' 00" W
67	150.00	30.00	30.00	150.00	300.00	S 90° 00' 00" W
68	150.00	30.00	30.00	150.00	300.00	S 90° 00' 00" W
69	150.00	30.00	30.00	150.00	300.00	S 90° 00' 00" W
70	150.00	30.00	30.00	150.00	300.00	S 90° 00' 00" W
71	150.00	30.00	30.00	150.00	300.00	S 90° 00' 00" W
72	150.00	30.00	30.00	150.00	300.00	S 90° 00' 00" W
73	150.00	30.00	30.00	150.00	300.00	S 90° 00' 00" W
74	150.00	30.00	30.00	150.00	300.00	S 90° 00' 00" W
75	150.00	30.00	30.00	150.00	300.00	S 90° 00' 00" W
76	150.00	30.00	30.00	150.00	300.00	S 90° 00' 00" W
77	150.00	30.00	30.00	150.00	300.00	S 90° 00' 00" W
78	150.00	30.00	30.00	150.00	300.00	S 90° 00' 00" W
79	150.00	30.00	30.00	150.00	300.00	S 90° 00' 00" W
80	150.00	30.00	30.00	150.00	300.00	S 90° 00' 00" W
81	150.00	30.00	30.00	150.00	300.00	S 90° 00' 00" W
82	150.00	30.00	30.00	150.00	300.00	S 90° 00' 00" W

SCALE: 1" = 200'



**HENRICH TROTTER
 CARTER, & AYERS INC.**
 LAND SURVEYORS
 636 N. WYMORE ROAD
 WINTER PARK, FLORIDA, 32789
 305/647/7346

PETITION TO ABANDON OR VACATE UTILITY
OR NON-RIGHT-OF-WAY EASEMENT

TO: THE HONORABLE BOARD OF COUNTY COMMISSIONERS
OF ST. JOHNS COUNTY, FLORIDA

Come now STEVEN WESLEY CONNER

and respectfully petitions this Honorable Board as follows:

1. To vacate, abandon, discontinue and close portions of those utility or non-right-of-way easements situate in St. Johns County, Florida, hereinafter more particularly described; to renounce and disclaim any right of St. Johns County and the public in and to the lands constituting such portions of easements; and to renounce and disclaim any right of St. Johns County and the public in and to any lands or interest therein acquired by purchase, gift, devise, dedication or prescription for such portions of said easements as follows:

Legal description and map as per attached
SCHEDULES "A" AND A-1"

2. To adopt a resolution declaring that at a definite time and place a public hearing will be held to consider the advisability of the above, and to publish notice as prescribed by St. Johns County, one time in a newspaper of general circulation advising of a public hearing in connection with the above matter, and thereafter adopting a resolution renouncing and disclaiming any right of the County and the public in and to the hereinbefore described portion of easement and vacating, abandoning, discontinuing and closing same.

3. In support hereof, Petitioner shows that he is the owner of certain lands bordering said portion of easement sought to be vacated. The names and addresses of all other owners or persons having an interest in any lands bordering said portion of easement sought to be vacated are as follows:

List as per attached SCHEDULE "B"

and each of those persons have signed this Petition or were served with a copy of this Petition by certified mail, return receipt requested, prior to June 1, 1986, and were advised to contact the Board of County Commissioners of St. Johns County, Florida, should they have any objection to the vacation of the said portion of easement.

4. Petitioner further shows that said portion of easement sought to be vacated is neither a state nor federal highway and is wholly without the limits of any municipality.

Steven Wesley Conner
STEVEN WESLEY CONNER

Signatures of each Petitioner

STATE OF FLORIDA

COUNTY OF ~~ST. JOHNS~~ DUVAL

(A NOTARY ACKNOWLEDGMENT IS REQUIRED FOR EACH PETITIONER)

STEVEN WESLEY CONNER, being by me, the undersigned officer, first duly sworn, says on oath that he is the Petitioner named in the foregoing Petition to vacate portions of easement; that he has read same and knows the contents thereof and that the statements contained herein are true.

Steven W. Conner
Signature of Petitioner

SWORN TO AND SUBSCRIBED before me this 5 day of May, 1986.

Mary Ann Carlson
Notary Public
State of Florida At Large

My Commission expires:

NOTARY PUBLIC, STATE OF FLORIDA AT LARGE
MY COMMISSION EXPIRES NOV. 21, 1986
BONDED THROUGH MUROSKI-ASHTON, INC.

EXHIBIT A

Ten foot (10') utilities and drainage easement and any and all other easements along the common lot line of Lots 28 and 29, Greenbriar, Section One, according the map thereof recorded in Map Book 14, Pages 57 and 58, Public Records of St. Johns County, Florida.