

RESOLUTION 89-198

A RESOLUTION EXPANDING THE GEOGRAPHICAL AREA OF THE COUNTY SEAT OF ST. JOHNS COUNTY TO INCLUDE THE LANDS UPON WHICH THE NEW COUNTY COURTHOUSE WILL BE LOCATED.

WHEREAS, the Florida Constitution, Article 8, section 1(k) provides that there shall be a county seat at which shall be located the principal offices and permanent records of all county officers; and

WHEREAS, Florida Statute §138.12 provides that the board of county commissioners of any county may expand the geographical area of the county seat of its county beyond the corporate limits of the municipality named as the county seat by adopting a resolution to that effect at any regular or special meeting of the board; and

WHEREAS, such statute also provides that nothing therein shall be deemed to annex to such municipality the territory added to the county seat; and

WHEREAS, the new County Courthouse will be constructed at a location beyond the corporate limits of the City of St. Augustine near the County Administration building and the County jail, both of which are also located beyond the corporate limits of the City of St. Augustine; and

WHEREAS, it is intended that the principal offices of all the county officers will be located in such buildings

NOW, THEREFORE, BE IT RESOLVED BY THE BOARD OF COUNTY COMMISSIONERS OF ST. JOHNS COUNTY, FLORIDA, this 22nd day of August, 1989, that pursuant to Florida Statute 138.12 the

geographical area of the County Seat of St. Johns County, Florida is hereby expanded beyond the corporate limits of the City of St. Augustine, to include the following lands described in Exhibit A attached hereto, which lands include the lands upon which the County Administration building and the County jail are located and the lands upon which the new County courthouse will be constructed.

Nothing in this Resolution shall be deemed to annex said lands to the City of St. Augustine.

BOARD OF COUNTY COMMISSIONERS
OF ST. JOHNS COUNTY, FLORIDA

ATTEST: CARL "BUD" MARKEL

BY: Connie E. McDaniel
Deputy Clerk

BY: 
Its Chairman



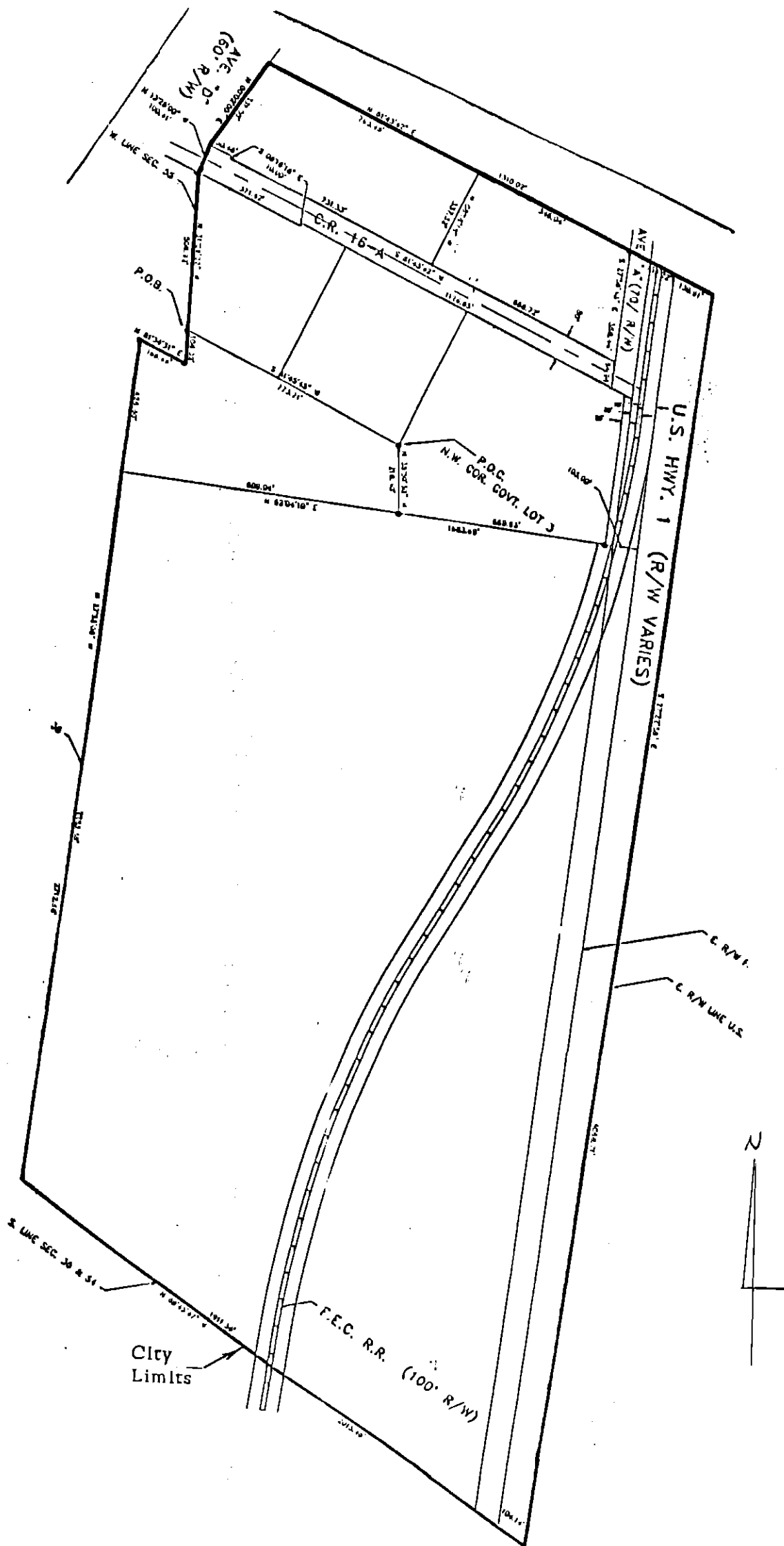


EXHIBIT "A"
1 of 2

A parcel of land in Sections 36, 54, and 55, Township 6 South, Range 29 East, St. Johns County, Florida described as follows:

Commence at a point on the East line of the Francis J. Fatio Grant, Section 55, Township 6 South, Range 29 East, said point also being the northwest corner of Government Lot 3, Section 36, Township 6 South, Range 29 East; thence South 81 degrees 45 minutes 45 seconds West, assumed bearing, along a line parallel with the north line of said Fatio Grant 773.71 feet to the west line of said Section 55 and the Point of Beginning of the parcel to be described; thence North 31 degrees 26 minutes 02 seconds West along said west line of Section 55 a distance of 506.92 feet to the south right-of-way line of County Road 16-A; thence North 13 degrees 26 minutes 00 seconds West 100.41 feet to the intersection of the north right-of-way line of County Road 16-A and the easterly right-of-way line of Avenue "D" (60' R/W) thence North 00 degrees 02 minutes 00 seconds East along said easterly right-of-way line 331.00 feet; thence North 81 degrees 43 minutes 42 seconds East parallel with said County Road 16-A a distance of 1310.02 feet to a point on the westerly right-of-way line of Avenue "A" (70' R/W); thence continue North 81 degrees 43 minutes 42 seconds East 299.13 feet to the easterly right-of-way line of U.S. Highway 1; thence South 27 degrees 22 minutes 58 seconds East along said easterly right-of-way line 4068.71 feet, more or less, to the south line of the Joseph S. Sanchez Grant, Section 54, Township 6 South, Range 29 East; thence North 89 degrees 45 minutes 47 seconds West along the South line of Sections 54 and 36, Township 6 South, Range 29 East, 2015.49 feet, more or less, to the southwest corner of said Section 36; Thence North 27 degrees 55 minutes 06 seconds West along the westerly line of Sections 36 and 55, Township 6 South, Range 29 East 2712.68 feet, more or less, to the northeast corner of Section 56, Township 6 South, Range 29 East; thence North 81 degrees 34 minutes 31 seconds East along the North line of said Sections 55 and 56 a distance of 166.44 feet; thence North 31 degrees 26 minutes 02 seconds West along the west line of said Section 55 a distance of 106.02 feet to the Point of Beginning.