

RESOLUTION NO. 95- 15
RESOLUTION OF THE BOARD OF COUNTY
COMMISSIONERS OF ST. JOHNS COUNTY, FLORIDA
APPROVING A SUBDIVISION PLAT FOR
JULINGTON CREEK PLANTATION PARCEL 35 PHASE 1

WHEREAS, Atlantic Gulf Communities Corporation, a Delaware Corporation, as Owner, has applied to the Board of County Commissioners of St. Johns County, Florida, for approval to record a subdivision plat known as Julington Creek Plantation Parcel 35 Phase 1.

NOW, THEREFORE BE IT RESOLVED BY THE BOARD OF COUNTY COMMISSIONERS OF ST. JOHNS COUNTY, FLORIDA, as follows:

Section 1. The above-described subdivision plat and its dedicated areas depicted thereon are conditionally approved and accepted by the Board of County Commissioners of St. Johns County, Florida subject to Section 2, 4, and 5.

Section 2. Pursuant to the Settlement Agreement dated April 14, 1992 by and between the Board of County Commissioners of St. Johns County, Florida and Atlantic Gulf Communities Corporation as thereafter amended, the construction of the subdivision improvements shall be assured by the deposit of funds in an escrow account with First Union National Bank of Florida, pursuant to the Escrow Agreement by and among Atlantic Gulf Communities Corporation, First Union National Bank of Florida and The Board of County

Commissioners of St. Johns County, Florida, which shall be approved contemporaneously herewith.

Section 3. A Warranty Bond is not required.

Section 4. The approval and acceptance described in Section 1 shall not take effect until the Clerk has received a title opinion, certificate, or policy pertaining to the real property that is the subject of the aforementioned subdivision plat which opinion, certificate or policy is in a form acceptable to the County Attorney or Assistant County Attorney.

Section 5. The approval and acceptance described in Section 1 shall not take effect until the plat has been signed by each of the following departments, person or offices:


- a) Chairman or Vice-Chairman of the Board of County Commissioners of St. Johns County, Florida;
- b) Office of the County Attorney;
- c) County Planning and Zoning Department; and
- d) Clerk of Courts.

The Clerk shall not sign or accept the Plat for recording until it has been signed by each of the above persons or entities described in a) through c) above. If the plat is not signed and accepted by the Clerk for recording within 14 days from the date hereof, then the above-described conditional approval shall automatically terminate. If the plat is signed by the Clerk

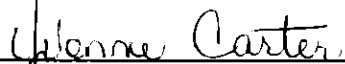
on or before such time, the conditions described herein shall be deemed to have been met.

ADOPTED by the Board of County Commissioners of St. Johns County, Florida, this 24th day of January, 1995.

BOARD OF COUNTY COMMISSIONERS
OF ST. JOHNS COUNTY, FLORIDA

BY: 
Its Chairman

ATTEST: Carl "Bud" Markel, Clerk


Deputy Clerk

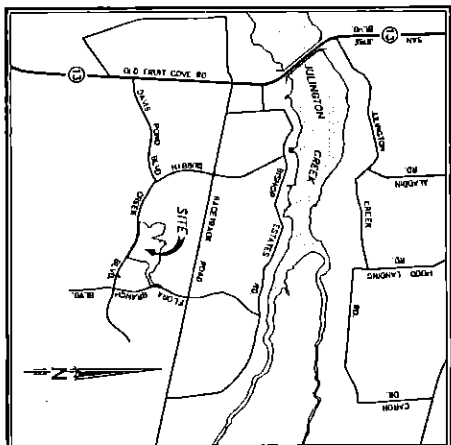


JULINGTON CREEK PLANTATION PARCEL 35 PHASE 1

SECTION 35, TOWNSHIP 4 SOUTH, RANGE 27 EAST
ST. JOHNS COUNTY, FLORIDA

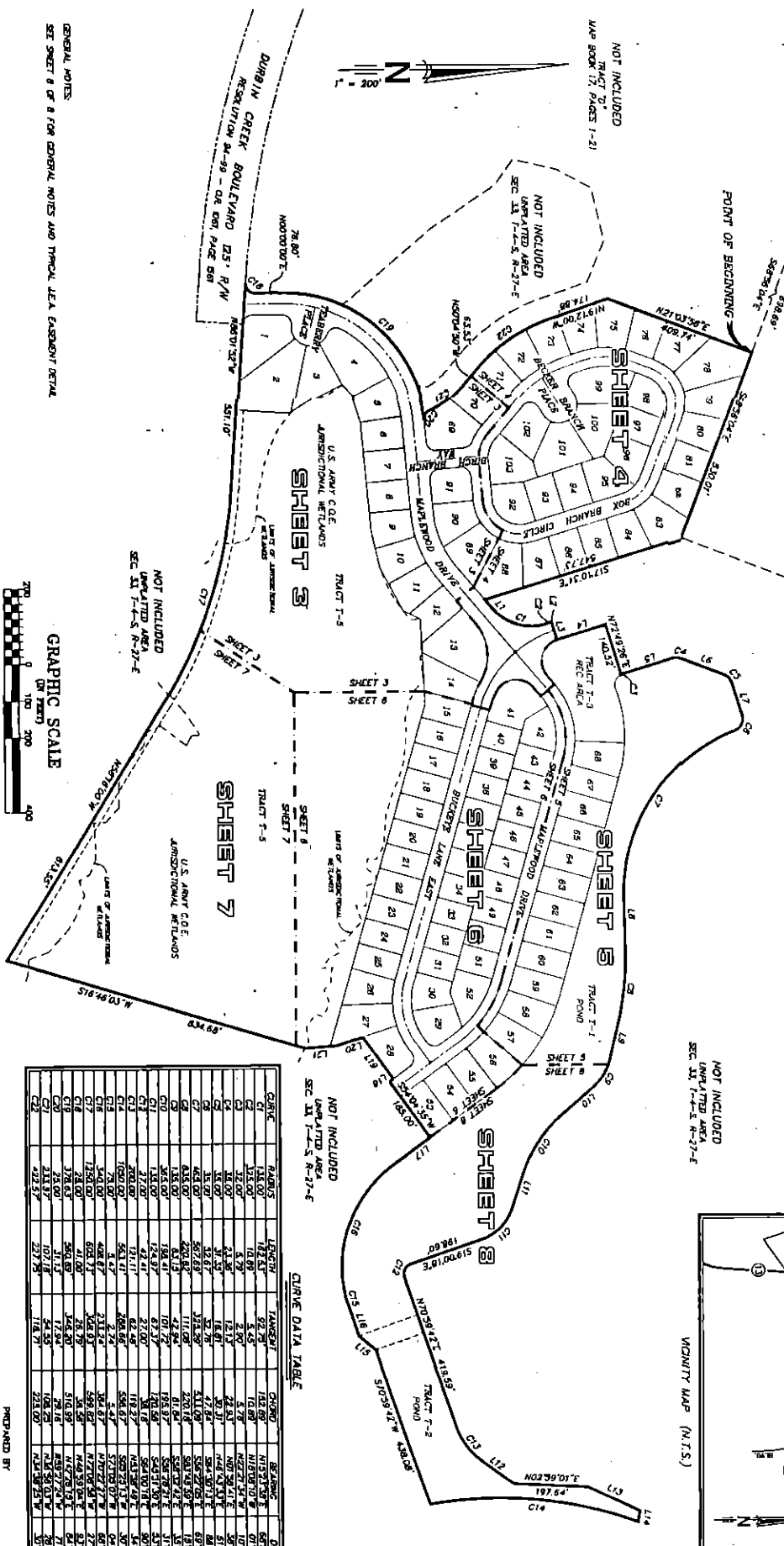
MAP BOOK _____ PAGE _____
SHEET 2 OF 8 SHEETS

KEY MAP



LINE DATA TABLE

LINE	BEARING	DISTANCE
L1	N 72° 15' 00" E	100.00
L2	N 72° 15' 00" E	50.00
L3	N 72° 15' 00" E	50.00
L4	N 72° 15' 00" E	50.00
L5	N 72° 15' 00" E	50.00
L6	N 72° 15' 00" E	50.00
L7	N 72° 15' 00" E	50.00
L8	N 72° 15' 00" E	50.00
L9	N 72° 15' 00" E	50.00
L10	N 72° 15' 00" E	50.00
L11	N 72° 15' 00" E	50.00
L12	N 72° 15' 00" E	50.00
L13	N 72° 15' 00" E	50.00
L14	N 72° 15' 00" E	50.00
L15	N 72° 15' 00" E	50.00
L16	N 72° 15' 00" E	50.00
L17	N 72° 15' 00" E	50.00
L18	N 72° 15' 00" E	50.00
L19	N 72° 15' 00" E	50.00
L20	N 72° 15' 00" E	50.00



CURVE DATA TABLE

CURVE	RADIUS	LENGTH	TANGENT	CHORD	BEARING
C1	125.00'	174.53'	54.43'	168.89'	63° 00' 00"
C2	125.00'	174.53'	54.43'	168.89'	117° 00' 00"
C3	125.00'	174.53'	54.43'	168.89'	270° 00' 00"
C4	125.00'	174.53'	54.43'	168.89'	324° 00' 00"
C5	125.00'	174.53'	54.43'	168.89'	0° 00' 00"
C6	125.00'	174.53'	54.43'	168.89'	45° 00' 00"
C7	125.00'	174.53'	54.43'	168.89'	90° 00' 00"
C8	125.00'	174.53'	54.43'	168.89'	135° 00' 00"
C9	125.00'	174.53'	54.43'	168.89'	180° 00' 00"
C10	125.00'	174.53'	54.43'	168.89'	225° 00' 00"
C11	125.00'	174.53'	54.43'	168.89'	270° 00' 00"
C12	125.00'	174.53'	54.43'	168.89'	315° 00' 00"
C13	125.00'	174.53'	54.43'	168.89'	0° 00' 00"
C14	125.00'	174.53'	54.43'	168.89'	45° 00' 00"
C15	125.00'	174.53'	54.43'	168.89'	90° 00' 00"
C16	125.00'	174.53'	54.43'	168.89'	135° 00' 00"
C17	125.00'	174.53'	54.43'	168.89'	180° 00' 00"
C18	125.00'	174.53'	54.43'	168.89'	225° 00' 00"
C19	125.00'	174.53'	54.43'	168.89'	270° 00' 00"
C20	125.00'	174.53'	54.43'	168.89'	315° 00' 00"
C21	125.00'	174.53'	54.43'	168.89'	0° 00' 00"
C22	125.00'	174.53'	54.43'	168.89'	45° 00' 00"
C23	125.00'	174.53'	54.43'	168.89'	90° 00' 00"
C24	125.00'	174.53'	54.43'	168.89'	135° 00' 00"
C25	125.00'	174.53'	54.43'	168.89'	180° 00' 00"
C26	125.00'	174.53'	54.43'	168.89'	225° 00' 00"
C27	125.00'	174.53'	54.43'	168.89'	270° 00' 00"
C28	125.00'	174.53'	54.43'	168.89'	315° 00' 00"
C29	125.00'	174.53'	54.43'	168.89'	0° 00' 00"
C30	125.00'	174.53'	54.43'	168.89'	45° 00' 00"
C31	125.00'	174.53'	54.43'	168.89'	90° 00' 00"
C32	125.00'	174.53'	54.43'	168.89'	135° 00' 00"
C33	125.00'	174.53'	54.43'	168.89'	180° 00' 00"
C34	125.00'	174.53'	54.43'	168.89'	225° 00' 00"
C35	125.00'	174.53'	54.43'	168.89'	270° 00' 00"
C36	125.00'	174.53'	54.43'	168.89'	315° 00' 00"
C37	125.00'	174.53'	54.43'	168.89'	0° 00' 00"
C38	125.00'	174.53'	54.43'	168.89'	45° 00' 00"
C39	125.00'	174.53'	54.43'	168.89'	90° 00' 00"
C40	125.00'	174.53'	54.43'	168.89'	135° 00' 00"
C41	125.00'	174.53'	54.43'	168.89'	180° 00' 00"
C42	125.00'	174.53'	54.43'	168.89'	225° 00' 00"
C43	125.00'	174.53'	54.43'	168.89'	270° 00' 00"
C44	125.00'	174.53'	54.43'	168.89'	315° 00' 00"
C45	125.00'	174.53'	54.43'	168.89'	0° 00' 00"
C46	125.00'	174.53'	54.43'	168.89'	45° 00' 00"
C47	125.00'	174.53'	54.43'	168.89'	90° 00' 00"
C48	125.00'	174.53'	54.43'	168.89'	135° 00' 00"
C49	125.00'	174.53'	54.43'	168.89'	180° 00' 00"
C50	125.00'	174.53'	54.43'	168.89'	225° 00' 00"
C51	125.00'	174.53'	54.43'	168.89'	270° 00' 00"
C52	125.00'	174.53'	54.43'	168.89'	315° 00' 00"
C53	125.00'	174.53'	54.43'	168.89'	0° 00' 00"
C54	125.00'	174.53'	54.43'	168.89'	45° 00' 00"
C55	125.00'	174.53'	54.43'	168.89'	90° 00' 00"
C56	125.00'	174.53'	54.43'	168.89'	135° 00' 00"
C57	125.00'	174.53'	54.43'	168.89'	180° 00' 00"
C58	125.00'	174.53'	54.43'	168.89'	225° 00' 00"
C59	125.00'	174.53'	54.43'	168.89'	270° 00' 00"
C60	125.00'	174.53'	54.43'	168.89'	315° 00' 00"
C61	125.00'	174.53'	54.43'	168.89'	0° 00' 00"
C62	125.00'	174.53'	54.43'	168.89'	45° 00' 00"
C63	125.00'	174.53'	54.43'	168.89'	90° 00' 00"
C64	125.00'	174.53'	54.43'	168.89'	135° 00' 00"
C65	125.00'	174.53'	54.43'	168.89'	180° 00' 00"
C66	125.00'	174.53'	54.43'	168.89'	225° 00' 00"
C67	125.00'	174.53'	54.43'	168.89'	270° 00' 00"
C68	125.00'	174.53'	54.43'	168.89'	315° 00' 00"
C69	125.00'	174.53'	54.43'	168.89'	0° 00' 00"
C70	125.00'	174.53'	54.43'	168.89'	45° 00' 00"
C71	125.00'	174.53'	54.43'	168.89'	90° 00' 00"
C72	125.00'	174.53'	54.43'	168.89'	135° 00' 00"
C73	125.00'	174.53'	54.43'	168.89'	180° 00' 00"
C74	125.00'	174.53'	54.43'	168.89'	225° 00' 00"
C75	125.00'	174.53'	54.43'	168.89'	270° 00' 00"
C76	125.00'	174.53'	54.43'	168.89'	315° 00' 00"
C77	125.00'	174.53'	54.43'	168.89'	0° 00' 00"
C78	125.00'	174.53'	54.43'	168.89'	45° 00' 00"
C79	125.00'	174.53'	54.43'	168.89'	90° 00' 00"
C80	125.00'	174.53'	54.43'	168.89'	135° 00' 00"
C81	125.00'	174.53'	54.43'	168.89'	180° 00' 00"
C82	125.00'	174.53'	54.43'	168.89'	225° 00' 00"
C83	125.00'	174.53'	54.43'	168.89'	270° 00' 00"
C84	125.00'	174.53'	54.43'	168.89'	315° 00' 00"
C85	125.00'	174.53'	54.43'	168.89'	0° 00' 00"
C86	125.00'	174.53'	54.43'	168.89'	45° 00' 00"
C87	125.00'	174.53'	54.43'	168.89'	90° 00' 00"
C88	125.00'	174.53'	54.43'	168.89'	135° 00' 00"
C89	125.00'	174.53'	54.43'	168.89'	180° 00' 00"
C90	125.00'	174.53'	54.43'	168.89'	225° 00' 00"
C91	125.00'	174.53'	54.43'	168.89'	270° 00' 00"
C92	125.00'	174.53'	54.43'	168.89'	315° 00' 00"
C93	125.00'	174.53'	54.43'	168.89'	0° 00' 00"
C94	125.00'	174.53'	54.43'	168.89'	45° 00' 00"
C95	125.00'	174.53'	54.43'	168.89'	90° 00' 00"
C96	125.00'	174.53'	54.43'	168.89'	135° 00' 00"
C97	125.00'	174.53'	54.43'	168.89'	180° 00' 00"
C98	125.00'	174.53'	54.43'	168.89'	225° 00' 00"
C99	125.00'	174.53'	54.43'	168.89'	270° 00' 00"
C100	125.00'	174.53'	54.43'	168.89'	315° 00' 00"

GENERAL NOTES
SEE SHEET 8 OF 8 FOR GENERAL NOTES AND TYPICAL J.E.A. EASEMENT DETAIL



PREPARED BY
SUNSHINE STATE ENGINEERS, INC.
1111 N. W. 11th Street
Jacksonville, Florida 32244
(904) 943-6550