

RESOLUTION NO. 95- 9
RESOLUTION OF THE BOARD OF COUNTY
COMMISSIONERS OF ST. JOHNS COUNTY, FLORIDA
APPROVING A SUBDIVISION PLAT FOR
REPLAT OF LOTS 14, 15, 16 AND 17 AND
A PORTION OF TRACT A OF AZALEA POINT
AT PONTE VEDRA UNIT TWO-C AND TWO-D

WHEREAS, Sing Development Company, a Georgia Corporation, as Owner, has applied to the Board of County Commissioners of St. Johns County, Florida, for approval to record a subdivision plat known as Replat of Lots 14, 15, 16 and 17 and a portion of Tract A of Azalea Point at Ponte Vedra Unit Two-C and Two-D.

NOW, THEREFORE BE IT RESOLVED BY THE BOARD OF COUNTY COMMISSIONERS OF ST. JOHNS COUNTY, FLORIDA, as follows:

Section 1. The above-described subdivision plat and its dedicated areas depicted thereon are conditionally approved and accepted by the Board of County Commissioners of St. Johns County, Florida subject to Section 2, 4, and 5.

Section 2. A Construction Bond is not required.

Section 3. A Warranty Bond is not required.

Section 4. The approval and acceptance described in Section 1 shall not take effect until the Clerk has received a title opinion, certificate, or policy pertaining to the real property that is the subject of the aforementioned subdivision plat which opinion, certificate or policy is in a form acceptable to the County Attorney or Assistant County Attorney.

Section 5. The approval and acceptance described in Section 1 shall not take effect until the plat has been signed by each of the following departments, person or offices:

- a) Chairman or Vice-Chairman of the Board of County Commissioners of St. Johns County, Florida;
- b) Office of the County Attorney;
- c) County Planning and Zoning Department; and
- d) Clerk of Courts.

The Clerk shall not sign or accept the Plat for recording until it has been signed by each of the above persons or entities described in a) through c) above. If the plat is not signed and accepted by the Clerk for recording within 14 days from the date hereof, then the above-described conditional approval shall automatically terminate. If the plat is signed by the Clerk on or before such time, the conditions described herein shall be deemed to have been met.

ADOPTED by the Board of County Commissioners of St. Johns County, Florida, this 10th day of January, 1995.

BOARD OF COUNTY COMMISSIONERS
OF ST. JOHNS COUNTY, FLORIDA

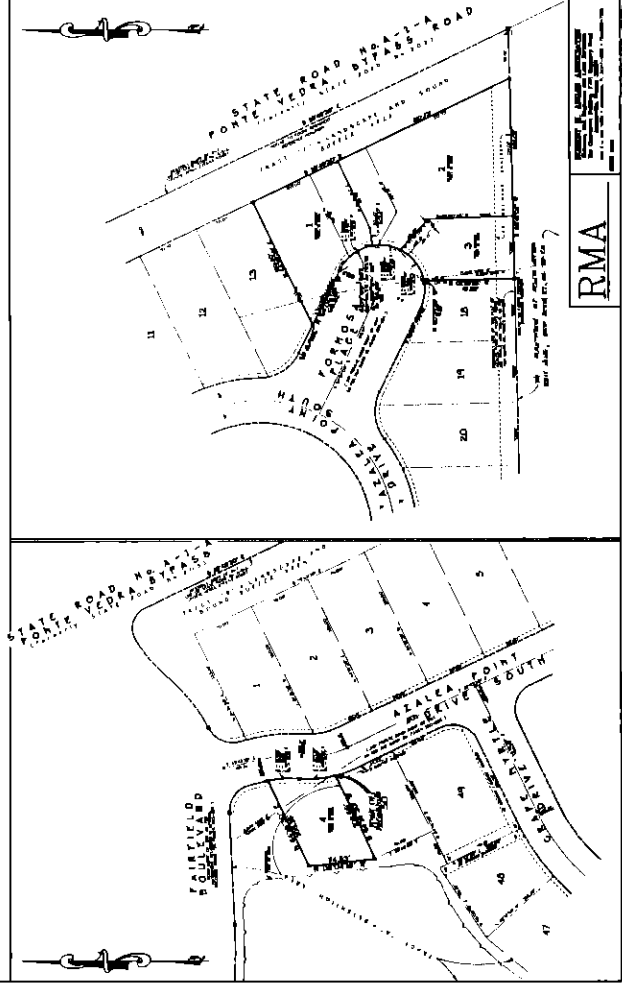
BY: Barbara Ward
its Chair - Barbara Ward

ATTEST: Carl "Bud" Markel, Clerk

Wonne Carter
Deputy Clerk

**REPLAT OF LOTS 14, 15, 16 AND 17 AND
 A PORTION OF TRACT A OF AZALEA POINT
 AT PONTE VEDRA UNIT TWO-C AND TWO-D**
 A PORTION OF THE PLAT OF PONTE VEDRA UNIT TWO-C AND
 UNIT TWO-D, RECORDED IN MAP BOOK 26, PAGES 100 THRU
 104 OF THE PUBLIC RECORDS OF ST. JOHNS COUNTY, FLORIDA.

MAP BOOK _____ PAGE _____
 SHEET THREE OF THREE SHEETS
 SEE SHEET TWO (2) FOR GENERAL NOTES
 SCALE: 1" = 40'



RMA
 100' BUFFER ZONE