

RESOLUTION NO. 96- 150
RESOLUTION OF THE BOARD OF COUNTY
COMMISSIONERS OF ST. JOHNS COUNTY, FLORIDA
APPROVING A SUBDIVISION PLAT FOR
VILLAGE GREEN UNIT TWO AT CUNNINGHAM CREEK PLANTATION

WHEREAS, Cunningham Hollow Joint Venture, a Florida General Partnership, as Owner, has applied to the Board of County Commissioners of St. Johns County, Florida, for approval to record a subdivision plat know as Village Green Unit Two at Cunningham Creek Plantation.

NOW, THEREFORE BE IT RESOLVED BY THE BOARD OF COUNTY COMMISSIONERS OF ST. JOHNS COUNTY, FLORIDA, as follows:

Section 1. The above-described subdivision plat and its dedicated areas depicted thereon are conditionally approved and accepted by the Board of County Commissioners of St. Johns County, Florida subject to Sections 2, 4, and 5.

Section 2. The Construction Bond is not required.

Section 3. A Warranty Bond is set set in the amount of \$22,962.00 and shall be delivered to the Clerk orf Courts and approved by him prior to recording the plat.

Section 4. The approval and acceptance described in Section 1 shall not take effect until the Clerk has received a title opinion, certificate, or policy pertaining to the real property that is the subject of the aforementioned subdivision plat which opinion, certificate or policy is in a form acceptable to the County Attorney or Assistant County Attorney.

Section 5. The approval and acceptance described in Section 1 shall not take effect until the plat has been signed by each of the following departments, person or offices:

- a) Chairman or Vice-Chairman of the Board of County Commissioners of St. Johns County, Florida;

- b) Office of the County Attorney;
- c) County Planning and Zoning Department; and
- d) Clerk of Courts.

The Clerk shall not sign or accept the Plat for recording until it has been signed by each of the above persons or entities described in a) through c) above. If the plat is not signed and accepted by the Clerk for recording within 14 days from the date hereof, then the above-described conditional approval shall automatically terminate. If the plat is signed by the Clerk on or before such time, the conditions described herein shall be deemed to have been met.

ADOPTED by the Board of County Commissioners of St. Johns County, Florida, this
10th day of September, 1996.



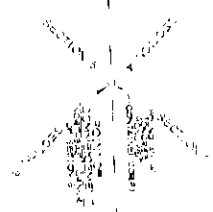
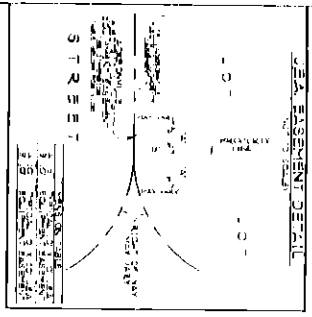
BOARD OF COUNTY COMMISSIONERS
OF ST. JOHNS COUNTY, FLORIDA

BY: Donald Jordan
Its Chair Donald Jordan

ATTEST: Carl "Bud" Markel

Genevieve Newcome
Deputy Clerk

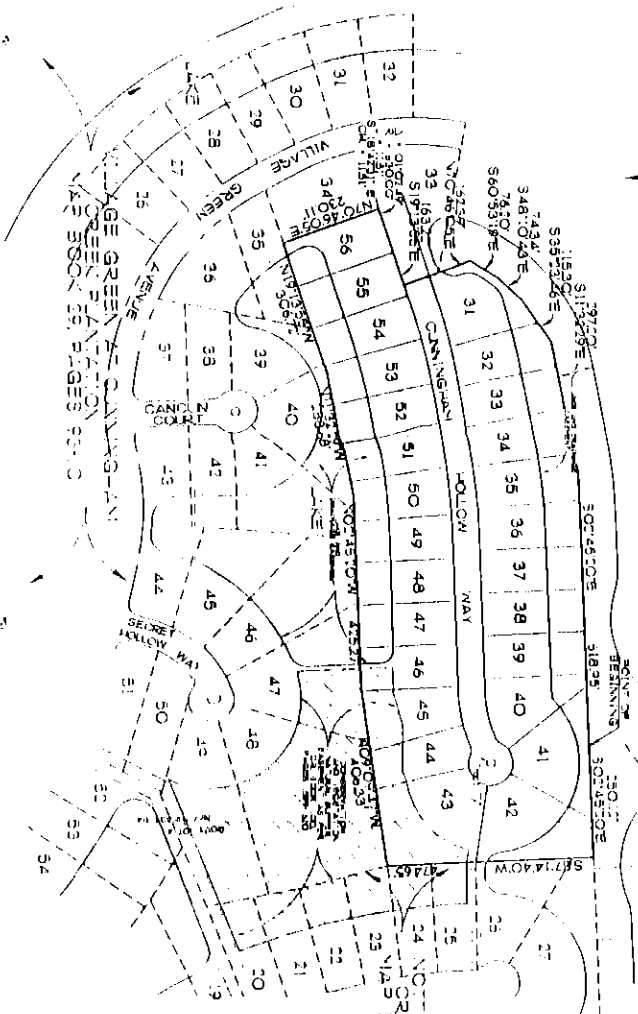
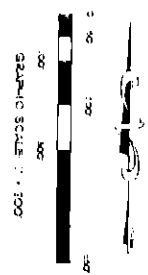
VILLAGE GREEN UNIT TWO AT CUNNINGHAM
 CREEK PLANTATION
 A PORTION OF SECTION 8, TOWNSHIP 5 SOUTH,
 RANGE 27 EAST, ST. JOHNS COUNTY FLORIDA.



VICINITY MAP
 SCALE 1"=200'

UNPLATTED LANDS
 OF SECTION 8

BLA POINT AT CUNNINGHAM
 CREEK PLANTATION
 MAP BOOK 300 PAGES 25-32



1. THE PLATTING UNIT SHOWN ON THIS MAP IS A PORTION OF SECTION 8, TOWNSHIP 5 SOUTH, RANGE 27 EAST, ST. JOHNS COUNTY, FLORIDA, AS SHOWN ON THE PLAT OF THE CUNNINGHAM CREEK PLANTATION, MAP BOOK 300, PAGES 25-32, ST. JOHNS COUNTY, FLORIDA, RECORDED IN THE PUBLIC RECORDS OF SAID COUNTY ON THE 14TH DAY OF FEBRUARY, 1983.

2. THE PLATTING UNIT SHOWN ON THIS MAP IS A PORTION OF THE CUNNINGHAM CREEK PLANTATION, MAP BOOK 300, PAGES 25-32, ST. JOHNS COUNTY, FLORIDA, RECORDED IN THE PUBLIC RECORDS OF SAID COUNTY ON THE 14TH DAY OF FEBRUARY, 1983.

3. THE PLATTING UNIT SHOWN ON THIS MAP IS A PORTION OF THE CUNNINGHAM CREEK PLANTATION, MAP BOOK 300, PAGES 25-32, ST. JOHNS COUNTY, FLORIDA, RECORDED IN THE PUBLIC RECORDS OF SAID COUNTY ON THE 14TH DAY OF FEBRUARY, 1983.

4. THE PLATTING UNIT SHOWN ON THIS MAP IS A PORTION OF THE CUNNINGHAM CREEK PLANTATION, MAP BOOK 300, PAGES 25-32, ST. JOHNS COUNTY, FLORIDA, RECORDED IN THE PUBLIC RECORDS OF SAID COUNTY ON THE 14TH DAY OF FEBRUARY, 1983.

5. THE PLATTING UNIT SHOWN ON THIS MAP IS A PORTION OF THE CUNNINGHAM CREEK PLANTATION, MAP BOOK 300, PAGES 25-32, ST. JOHNS COUNTY, FLORIDA, RECORDED IN THE PUBLIC RECORDS OF SAID COUNTY ON THE 14TH DAY OF FEBRUARY, 1983.

6. THE PLATTING UNIT SHOWN ON THIS MAP IS A PORTION OF THE CUNNINGHAM CREEK PLANTATION, MAP BOOK 300, PAGES 25-32, ST. JOHNS COUNTY, FLORIDA, RECORDED IN THE PUBLIC RECORDS OF SAID COUNTY ON THE 14TH DAY OF FEBRUARY, 1983.

7. THE PLATTING UNIT SHOWN ON THIS MAP IS A PORTION OF THE CUNNINGHAM CREEK PLANTATION, MAP BOOK 300, PAGES 25-32, ST. JOHNS COUNTY, FLORIDA, RECORDED IN THE PUBLIC RECORDS OF SAID COUNTY ON THE 14TH DAY OF FEBRUARY, 1983.

8. THE PLATTING UNIT SHOWN ON THIS MAP IS A PORTION OF THE CUNNINGHAM CREEK PLANTATION, MAP BOOK 300, PAGES 25-32, ST. JOHNS COUNTY, FLORIDA, RECORDED IN THE PUBLIC RECORDS OF SAID COUNTY ON THE 14TH DAY OF FEBRUARY, 1983.

9. THE PLATTING UNIT SHOWN ON THIS MAP IS A PORTION OF THE CUNNINGHAM CREEK PLANTATION, MAP BOOK 300, PAGES 25-32, ST. JOHNS COUNTY, FLORIDA, RECORDED IN THE PUBLIC RECORDS OF SAID COUNTY ON THE 14TH DAY OF FEBRUARY, 1983.

10. THE PLATTING UNIT SHOWN ON THIS MAP IS A PORTION OF THE CUNNINGHAM CREEK PLANTATION, MAP BOOK 300, PAGES 25-32, ST. JOHNS COUNTY, FLORIDA, RECORDED IN THE PUBLIC RECORDS OF SAID COUNTY ON THE 14TH DAY OF FEBRUARY, 1983.

CERTIFICATE OF APPROVAL AND ACCEPTANCE

THIS IS TO CERTIFY THAT THIS PLAT OF THE CUNNINGHAM CREEK PLANTATION, MAP BOOK 300, PAGES 25-32, ST. JOHNS COUNTY, FLORIDA, RECORDED IN THE PUBLIC RECORDS OF SAID COUNTY ON THE 14TH DAY OF FEBRUARY, 1983, HAS BEEN EXAMINED AND FOUND TO BE IN ACCORDANCE WITH THE REQUIREMENTS OF THE FLORIDA PLAT ACT, CHAPTER 218, F.S., AND THE REQUIREMENTS OF THE ST. JOHNS COUNTY BOARD OF COUNTY COMMISSIONERS ON THE 14TH DAY OF FEBRUARY, 1983.

BY: _____
 CLERK OF THE COUNTY COURT

CERTIFICATE OF APPROVAL OF THE PLANNING AND ZONING DEPARTMENT

THIS IS TO CERTIFY THAT THIS PLAT OF THE CUNNINGHAM CREEK PLANTATION, MAP BOOK 300, PAGES 25-32, ST. JOHNS COUNTY, FLORIDA, RECORDED IN THE PUBLIC RECORDS OF SAID COUNTY ON THE 14TH DAY OF FEBRUARY, 1983, HAS BEEN EXAMINED AND FOUND TO BE IN ACCORDANCE WITH THE REQUIREMENTS OF THE PLANNING AND ZONING DEPARTMENT OF ST. JOHNS COUNTY, FLORIDA, ON THE 14TH DAY OF FEBRUARY, 1983.

BY: _____
 CLERK OF THE PLANNING AND ZONING DEPARTMENT

CERTIFICATE OF APPROVAL OF THE ST. JOHNS COUNTY ATTORNEY

THIS IS TO CERTIFY THAT THIS PLAT OF THE CUNNINGHAM CREEK PLANTATION, MAP BOOK 300, PAGES 25-32, ST. JOHNS COUNTY, FLORIDA, RECORDED IN THE PUBLIC RECORDS OF SAID COUNTY ON THE 14TH DAY OF FEBRUARY, 1983, HAS BEEN EXAMINED AND FOUND TO BE IN ACCORDANCE WITH THE REQUIREMENTS OF THE ST. JOHNS COUNTY ATTORNEY ON THE 14TH DAY OF FEBRUARY, 1983.

BY: _____
 CLERK OF THE ST. JOHNS COUNTY ATTORNEY

CERTIFICATE OF CLERK

THIS IS TO CERTIFY THAT THIS PLAT OF THE CUNNINGHAM CREEK PLANTATION, MAP BOOK 300, PAGES 25-32, ST. JOHNS COUNTY, FLORIDA, RECORDED IN THE PUBLIC RECORDS OF SAID COUNTY ON THE 14TH DAY OF FEBRUARY, 1983, HAS BEEN EXAMINED AND FOUND TO BE IN ACCORDANCE WITH THE REQUIREMENTS OF THE CLERK OF THE COUNTY COURT ON THE 14TH DAY OF FEBRUARY, 1983.

BY: _____
 CLERK OF THE COUNTY COURT