

RESOLUTION NO. 96- 7
RESOLUTION OF THE BOARD OF COUNTY
COMMISSIONERS OF ST. JOHNS COUNTY, FLORIDA
APPROVING A SUBDIVISION PLAT FOR
NOTTINGHAM AT CUNNINGHAM CREEK PLANTATION

WHEREAS, Bestar Funding Corporation, a Florida Corporation, as Owner, has applied to the Board of County Commissioners of St. Johns County, Florida, for approval to record a subdivision plat know as Nottingham at Cunningham Creek Plantation.

NOW, THEREFORE BE IT RESOLVED BY THE BOARD OF COUNTY COMMISSIONERS OF ST. JOHNS COUNTY, FLORIDA, as follows:

Section 1. The above-described subdivision plat and its dedicated areas depicted thereon are conditionally approved and accepted by the Board of County Commissioners of St. Johns County, Florida subject to Sections 2, 4, and 5.

Section 2. The Construction Bond is set in the amount of \$ 223,197.75 and shall be delivered to the Clerk of Courts and approved by him prior to recording the plat.

Section 3. A Warranty Bond will be required in the amount of \$11,159.89.

Section 4. The approval and acceptance described in Section 1 shall not take effect until the Clerk has received a title opinion, certificate, or policy pertaining to the real property that is the subject of the aforementioned subdivision plat which opinion, certificate or policy is in a form acceptable to the County Attorney or Assistant County Attorney.

Section 5. The approval and acceptance described in Section 1 shall not take effect until the plat has been signed by each of the following departments, person or offices:

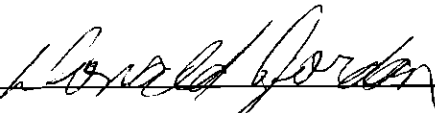
- a) Chairman or Vice-Chairman of the Board of County Commissioners of St. Johns County, Florida;

- b) Office of the County Attorney;
- c) County Planning and Zoning Department; and
- d) Clerk of Courts.

The Clerk shall not sign or accept the Plat for recording until it has been signed by each of the above persons or entities described in a) through c) above. If the plat is not signed and accepted by the Clerk for recording within 14 days from the date hereof, then the above-described conditional approval shall automatically terminate. If the plat is signed by the Clerk on or before such time, the conditions described herein shall be deemed to have been met.

ADOPTED by the Board of County Commissioners of St. Johns County, Florida, this
23 day of January, 19 96.

BOARD OF COUNTY COMMISSIONERS
OF ST. JOHNS COUNTY, FLORIDA

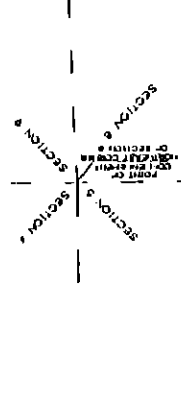
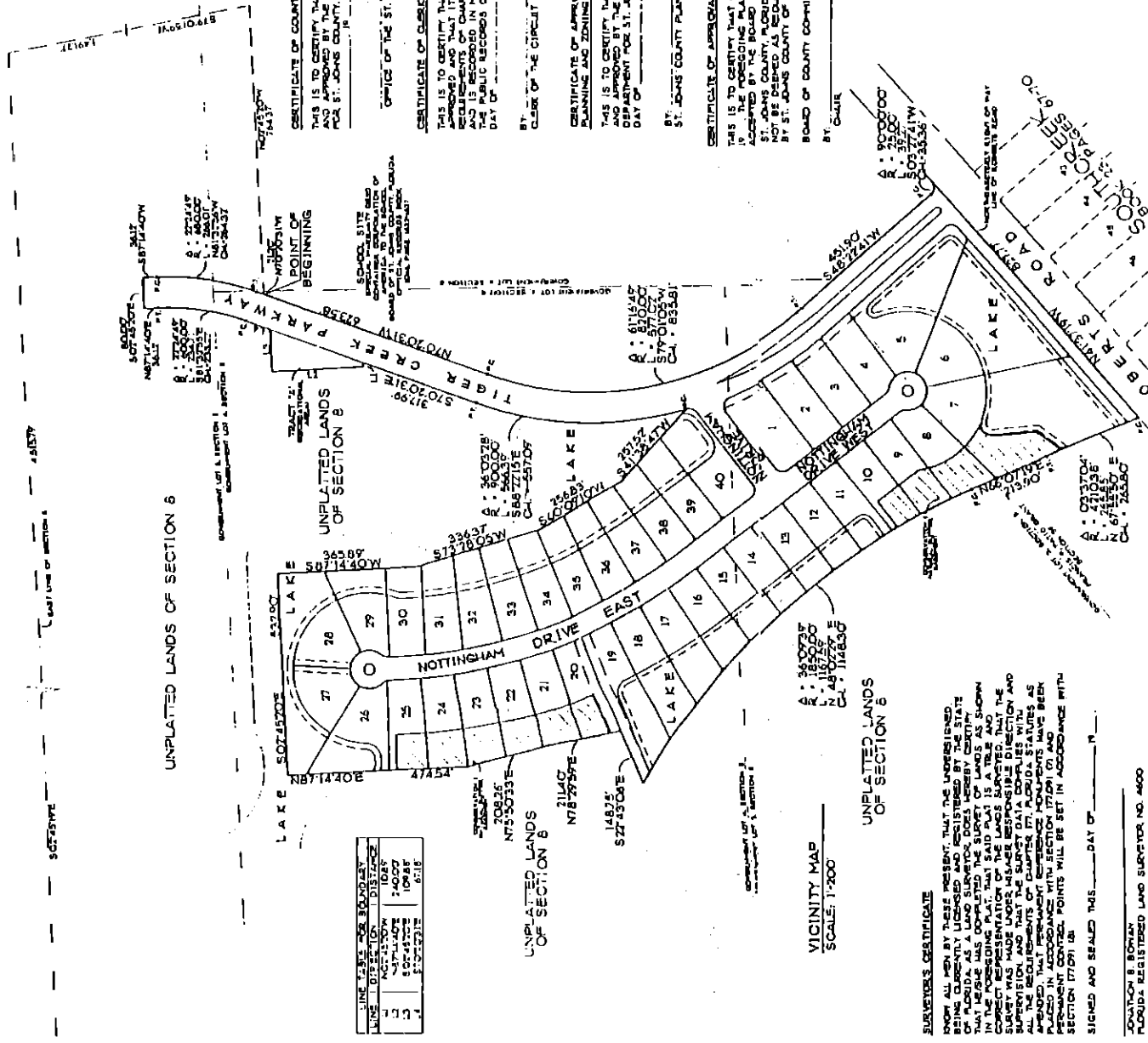
BY: 
Its Chair, **Donald Jordan**

ATTEST: Carl "Bud" Markel



Deputy Clerk

NOTTINGHAM at CUNNINGHAM CREEK PLANTATION
A PORTION OF SECTION 8, TOGETHER WITH A PORTION OF THE
FRANCIS P. FATIO GRANT, SECTION 39, TOWNSHIP 5 SOUTH,
RANGE 27 EAST, ST. JOHNS COUNTY, FLORIDA



LINE	DATE	FOR BOUNDARY
1	1/17/14	10:00
2	1/17/14	10:00
3	1/17/14	10:00
4	1/17/14	10:00

UNPLATTED LANDS OF SECTION 8

UNPLATTED LANDS OF SECTION 8

UNPLATTED LANDS OF SECTION 8

UNPLATTED LANDS OF SECTION 8

UNPLATTED LANDS OF SECTION 8

UNPLATTED LANDS OF SECTION 8

UNPLATTED LANDS OF SECTION 8

UNPLATTED LANDS OF SECTION 8

UNPLATTED LANDS OF SECTION 8

UNPLATTED LANDS OF SECTION 8

UNPLATTED LANDS OF SECTION 8

UNPLATTED LANDS OF SECTION 8

UNPLATTED LANDS OF SECTION 8

UNPLATTED LANDS OF SECTION 8

UNPLATTED LANDS OF SECTION 8

UNPLATTED LANDS OF SECTION 8

UNPLATTED LANDS OF SECTION 8

UNPLATTED LANDS OF SECTION 8

UNPLATTED LANDS OF SECTION 8

UNPLATTED LANDS OF SECTION 8

VICINITY MAP
SCALE: 1"=200'

SURVEYOR'S CERTIFICATE

CERTIFICATE OF APPROVAL AND ACCEPTANCE

CERTIFICATE OF CORRE

CERTIFICATE OF APPROVAL OF THE PLANNING AND ZONING DEPARTMENT

CERTIFICATE OF APPROVAL AND ACCEPTANCE

CERTIFICATE OF APPROVAL AND ACCEPTANCE

CERTIFICATE OF APPROVAL AND ACCEPTANCE

CERTIFICATE OF APPROVAL AND ACCEPTANCE

THIS IS TO CERTIFY THAT THIS PLAT HAS BEEN EXAMINED AND APPROVED BY THE OFFICE OF THE COUNTY ATTORNEY FOR ST. JOHNS COUNTY, FLORIDA ON THIS DAY OF _____ 19____.

OFFICE OF THE ST. JOHNS COUNTY ATTORNEY

THIS IS TO CERTIFY THAT THIS PLAT HAS BEEN EXAMINED AND APPROVED BY THE OFFICE OF THE COUNTY ATTORNEY FOR ST. JOHNS COUNTY, FLORIDA ON THIS DAY OF _____ 19____.

OFFICE OF THE ST. JOHNS COUNTY ATTORNEY

THIS IS TO CERTIFY THAT THIS PLAT HAS BEEN EXAMINED AND APPROVED BY THE OFFICE OF THE COUNTY ATTORNEY FOR ST. JOHNS COUNTY, FLORIDA ON THIS DAY OF _____ 19____.

OFFICE OF THE ST. JOHNS COUNTY ATTORNEY

THIS IS TO CERTIFY THAT THIS PLAT HAS BEEN EXAMINED AND APPROVED BY THE OFFICE OF THE COUNTY ATTORNEY FOR ST. JOHNS COUNTY, FLORIDA ON THIS DAY OF _____ 19____.

OFFICE OF THE ST. JOHNS COUNTY ATTORNEY

THIS IS TO CERTIFY THAT THIS PLAT HAS BEEN EXAMINED AND APPROVED BY THE OFFICE OF THE COUNTY ATTORNEY FOR ST. JOHNS COUNTY, FLORIDA ON THIS DAY OF _____ 19____.

OFFICE OF THE ST. JOHNS COUNTY ATTORNEY

THIS IS TO CERTIFY THAT THIS PLAT HAS BEEN EXAMINED AND APPROVED BY THE OFFICE OF THE COUNTY ATTORNEY FOR ST. JOHNS COUNTY, FLORIDA ON THIS DAY OF _____ 19____.

OFFICE OF THE ST. JOHNS COUNTY ATTORNEY

THIS IS TO CERTIFY THAT THIS PLAT HAS BEEN EXAMINED AND APPROVED BY THE OFFICE OF THE COUNTY ATTORNEY FOR ST. JOHNS COUNTY, FLORIDA ON THIS DAY OF _____ 19____.

OFFICE OF THE ST. JOHNS COUNTY ATTORNEY

THIS IS TO CERTIFY THAT THIS PLAT HAS BEEN EXAMINED AND APPROVED BY THE OFFICE OF THE COUNTY ATTORNEY FOR ST. JOHNS COUNTY, FLORIDA ON THIS DAY OF _____ 19____.

OFFICE OF THE ST. JOHNS COUNTY ATTORNEY

THIS IS TO CERTIFY THAT THIS PLAT HAS BEEN EXAMINED AND APPROVED BY THE OFFICE OF THE COUNTY ATTORNEY FOR ST. JOHNS COUNTY, FLORIDA ON THIS DAY OF _____ 19____.

OFFICE OF THE ST. JOHNS COUNTY ATTORNEY

THIS IS TO CERTIFY THAT THIS PLAT HAS BEEN EXAMINED AND APPROVED BY THE OFFICE OF THE COUNTY ATTORNEY FOR ST. JOHNS COUNTY, FLORIDA ON THIS DAY OF _____ 19____.

OFFICE OF THE ST. JOHNS COUNTY ATTORNEY

NOTTINGHAM at CUNNINGHAM CREEK PLANTATION

SECTION 8, TOWNSHIP 5 SOUTH, RANGE 27 EAST, ST. JOHNS COUNTY, FLORIDA

UNPLATTED LANDS OF SECTION 8

UNPLATTED LANDS OF SECTION 8

UNPLATTED LANDS OF SECTION 8

UNPLATTED LANDS OF SECTION 8

UNPLATTED LANDS OF SECTION 8

UNPLATTED LANDS OF SECTION 8

UNPLATTED LANDS OF SECTION 8

UNPLATTED LANDS OF SECTION 8

UNPLATTED LANDS OF SECTION 8

UNPLATTED LANDS OF SECTION 8

UNPLATTED LANDS OF SECTION 8

UNPLATTED LANDS OF SECTION 8

UNPLATTED LANDS OF SECTION 8

UNPLATTED LANDS OF SECTION 8

UNPLATTED LANDS OF SECTION 8

UNPLATTED LANDS OF SECTION 8

UNPLATTED LANDS OF SECTION 8

UNPLATTED LANDS OF SECTION 8