

RESOLUTION NO. 2004- 124

A RESOLUTION OF THE BOARD OF COUNTY COMMISSIONERS OF ST. JOHNS COUNTY STATING ITS INTENT NOT TO TAKE ANY ACTION TO CONDEMN AND/OR WIDEN CERTAIN NOW EXISTING EASEMENTS RUNNING FROM SOLANO ROAD IN ST. JOHNS COUNTY NORTHWARD TO THE DUVAL COUNTY LINE.

WHEREAS, there are certain existing electric power service easements in St. Johns County recorded in the County Official Record Books as designated on Exhibit A, attached hereto; and

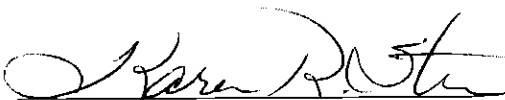
WHEREAS, said easements are not owned by St. Johns County, nor are they established for the purpose of providing public access rights of way; and

WHEREAS, the Board of County Commissioners of St. Johns County (the "Board") has not recognized any need to acquire the rights to the land in such easements for public rights of way.

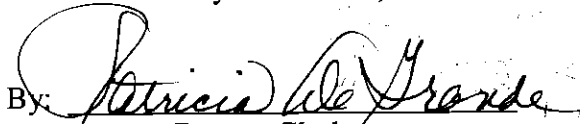
NOW THEREFORE BE IT RESOLVED BY THE BOARD OF COUNTY COMMISSIONERS OF ST. JOHNS COUNTY, FLORIDA that the Board has no present or prospective intent to acquire rights to the land under the electric power easements described in Exhibit A hereto for the purpose of creating public access rights of way.

PASSED AND ADOPTED by the Board of County Commissioners of St. Johns County, Florida this 8th day of June, 2004.

BOARD OF COUNTY COMMISSIONERS  
OF ST. JOHNS COUNTY, FLORIDA

By:   
Karen R. Stern, Chair

ATTEST: Cheryl Strickland, Clerk

By:   
Deputy Clerk

Effective Date: 6-8-04

RESOLUTION NO. 98-91

A RESOLUTION OF THE BOARD OF COUNTY COMMISSIONERS OF ST. JOHNS COUNTY, FLORIDA, REQUESTING THE FLORIDA DEPARTMENT OF TRANSPORTATION, THE METROPOLITAN PLANNING ORGANIZATION FOR THE JACKSONVILLE URBANIZED AREA AND ITS CITIZENS ADVISORY COMMITTEE TO ELIMINATE THE SOUTHWARD EXTENSION OF THE SOUTH BEACH PARKWAY AS A PART OF THE PARALLEL CORRIDOR STRATEGY OF THE SR A1A ARTERIAL INVESTMENT STUDY.

WHEREAS, the St. Johns County Commission desires transportation infrastructure to be constructed in areas with the least possible negative impact to all of the residents of St. Johns County; and

WHEREAS, the St. Johns County Commission recognizes that all alternatives to maintain acceptable levels of transportation must be studied to determine and balance the negative impacts of proposed alternatives with the potentials of those alternatives to maintain acceptable levels of transportation; and

WHEREAS, the St. Johns County Commission appreciates and commends the efforts of the Florida Department of Transportation, the Metropolitan Planning Organization of the Jacksonville Urbanized Area and its Citizens Advisory Committee in conducting the SR A1A Arterial Investment Study; and

WHEREAS, the St. Johns County Commission has received testimony from the Florida Department of Transportation and public comments with regards to the Parallel Corridor Strategy; and

WHEREAS, said testimony and public input has shown the proposed Segment(s) extending the South Beach Parkway south of J.T. Butler Boulevard will result in an extremely high negative impact on several existing residential areas with the resultant traffic routed to J.T. Butler Boulevard which already has a rapidly deteriorating level of transportation service.

NOW, THEREFORE, BE IT RESOLVED that the Board of County Commissioners of St. Johns County, Florida, respectfully requests that the Florida Department of Transportation, the Metropolitan Planning Organization for the Jacksonville Urbanized Area and its Citizen Advisory Committee eliminate the proposed extension of the South Beach Parkway south of J.T. Butler Boulevard as an option or a part of an option for the Parallel Corridor Strategy.

PASSED AND ADOPTED by the Board of County Commissioners of St. Johns County, Florida this 28th Day of April, 1998.

BOARD OF COUNTY COMMISSIONERS OF  
ST. JOHNS COUNTY, FLORIDA

By: Moses A. Floyd  
Chairman

ATTEST: CHERYL STRICKLAND, CLERK

By: Uwonne Carter  
Deputy Clerk

(04/28/98 - 8 - 2.1679)

2. CONSIDER RESOLUTION REQUESTING THE FLORIDA DEPARTMENT OF TRANSPORTATION, THE METROPOLITAN PLANNING ORGANIZATION FOR THE JACKSONVILLE URBANIZED AREA AND ITS CITIZENS ADVISORY COMMITTEE TO ELIMINATE THE SOUTHWARD EXTENSION OF THE SOUTH BEACH PARKWAY AS PART OF THE PARALLEL CORRIDOR STRATEGY OF THE S.R. AIA ARTERIAL INVESTMENT STUDY

Bruner reviewed this item and stated that he prepared the resolution that was approved by County Staff. He submitted 48 copies of letters from the residents opposing the parallel corridor, one in favor of the corridor and minutes from the Citizens Advisory Committee Meeting of July 30, 1997, advising and requesting the study for the parallel corridor to Solano Road. Taylor stated that she had also prepared a resolution and the idea in the resolution was to reject the alternative but not eliminate it, in case there was any question about whether FDOT studied it. Cody stated that she had about 70 letters and a number of signatures on a petition about the concern in the Ponte Vedra area on this item. Discussion followed. Taylor requested for the Commission to review the resolution that she submitted. (2.2676) Mary Kohnke, 29 South Roscoe, spoke in favor of the study. (2.3145) Bryant called for the question, seconded by Bruner. (2.3403) Motion by Bruner, seconded by Floyd, carried 4/3 by a roll call vote, to approve Resolution No. 98-91, a resolution of the Board of County Commissioners, St. Johns County, Florida, requesting the Florida Department of Transportation, The Metropolitan Planning Organization for the Jacksonville Urbanized area and its Citizen Advisory Committee to eliminate the Southward Extension of the South Beach Parkway as a part of the Parallel Corridor Strategy of the State Road AIA Arterial Investment Study.

#### Roll Call Vote

Taylor	No
Bruner	Yes
Howell	Yes
Floyd	Yes
Jacalone	No
Cody	No
Bryant	Yes

Motion carried 4/3.


#### RESOLUTION NO. 98-91

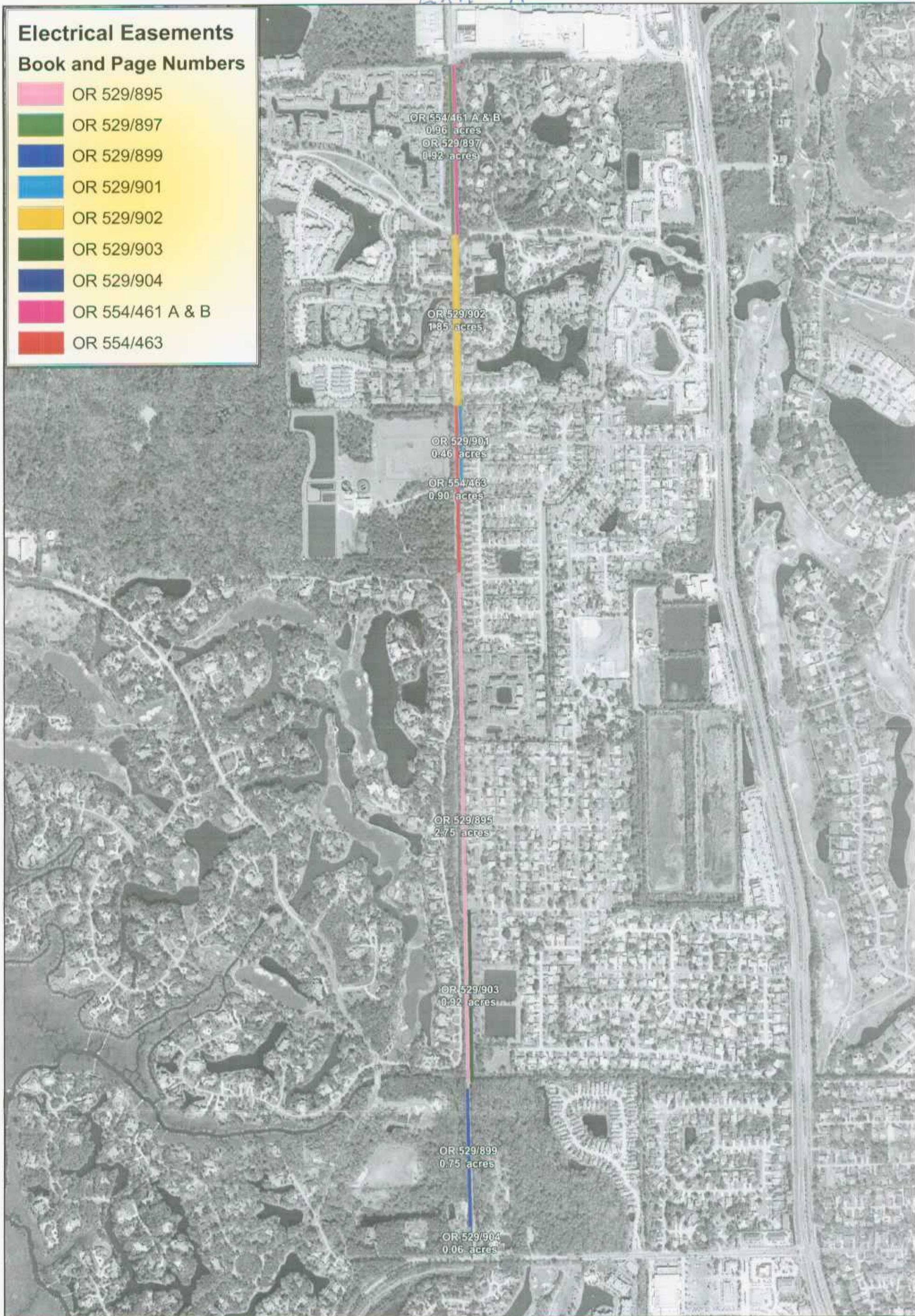
A RESOLUTION OF THE BOARD OF COUNTY COMMISSIONERS OF ST. JOHNS COUNTY, FLORIDA, REQUESTING THE FLORIDA DEPARTMENT OF TRANSPORTATION, THE METROPOLITAN PLANNING ORGANIZATION FOR THE JACKSONVILLE URBANIZED AREA AND ITS CITIZENS ADVISORY COMMITTEE TO ELIMINATE THE SOUTHWARD EXTENSION OF THE SOUTH BEACH PARKWAY AS A PART OF THE PARALLEL CORRIDOR STRATEGY OF THE SR AIA ARTERIAL INVESTMENT STUDY

(2.3430) Motion by Bruner, seconded by Floyd, carried 7/0, to direct the Board's representative, Commissioner Howell, to present this resolution after it is signed to the Metropolitan Planning Organization of the Jacksonville's Urbanized Area.

Exh A

### Electrical Easements Book and Page Numbers

-  OR 529/895
-  OR 529/897
-  OR 529/899
-  OR 529/901
-  OR 529/902
-  OR 529/903
-  OR 529/904
-  OR 554/461 A & B
-  OR 554/463



St. Johns County  
Real Estate Division  
(904) 823-2745  
May 26, 2004  
Damon Douglas

## Electrical Easements



DISCLAIMER:  
This map is for reference use only.  
Data provided are derived from multiple  
sources with varying levels of accuracy.

