

RESOLUTION NO. 2005- 177

A RESOLUTION BY THE BOARD OF COUNTY COMMISSIONERS OF ST. JOHNS COUNTY, FLORIDA, AUTHORIZING THE EXECUTION OF A MEMORANDUM OF UNDERSTANDING BETWEEN THE CITY OF ST. AUGUSTINE BEACH AND ST. JOHNS COUNTY TO PARTNER RESOURCES TO ACQUIRE 6.11 ACRES OF PROPERTY AT 953 A1A BEACH BOULEVARD FOR A PARK.

RECITALS

WHEREAS, the County has been presented an offer to purchase 6.11 acres at 953 A1A Beach Boulevard for a passive park, off-beach parking, picnic and/or nature viewing area; and

WHEREAS, the County and City of St. Augustine Beach will equally partner resources to acquire the site and develop a park; and

WHEREAS, the County and/or City of St. Augustine Beach will apply for a Florida Communities Trust (FCT) Grant for reimbursement of up to 75% of the purchase price; and


WHEREAS, the average of two recent appraisals is \$2,930,000 and funds for the purchase could be secured from the Florida Local Government Finance Commission Pooled Commercial Paper Loan Program.

NOW THEREFORE, BE IT RESOLVED by the Board of County Commissioners of St. Johns County, Florida, as follows:

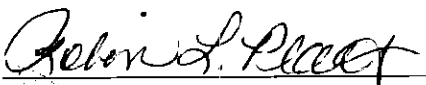
1. The above Recitals are hereby incorporated herein by reference and adopted as findings of fact in support of this Resolution.
2. The Chairman of the Board of County Commissioners is hereby authorized to execute a Memorandum of Understanding with the City of St. Augustine Beach stating the terms of reimbursement by the City of St. Augustine Beach, to the County of the purchase funds.

PASSED AND ADOPTED by the Board of County Commissioners of St. Johns County, Florida, this 28th day of June, 2005.

BOARD OF COUNTY COMMISSIONERS
OF ST. JOHNS COUNTY, FLORIDA

By: 
Bruce A. Maguire, Chairman

ATTEST: Cheryl Strickland, Clerk

By: 
Deputy Clerk

RENDITION DATE 7/1/2005

MEMORANDUM OF UNDERSTANDING

This Memorandum of Understanding, made and executed this _____ day of _____, 2005, by and between ST. JOHNS COUNTY, a political subdivision of the State of Florida, (the "County"), and the CITY OF ST. AUGUSTINE BEACH, a municipal corporation of the State of Florida, (the "City").

WITNESSETH:

WHEREAS, St. Johns County and St. Augustine Beach are interested in providing passive recreation amenities for its residents; and

WHEREAS, a six (6) acre parcel is available on Anastasia Island that would provide for a passive park site; and

WHEREAS, the County and City will partner resources to acquire the site and develop the park; and

WHEREAS, both parties hereto desire to memorialize the terms of the Agreement;

NOW, THEREFORE, in consideration of the mutual promises set forth herein, the parties agree as follows:

1. **Site Acquisition.** St. Johns County will acquire the site and apply for a Florida Communities Trust (FCT) Grant for reimbursement.
2. **Reimbursement.** St. Augustine Beach will reimburse St. Johns County \$200,000 the week following the closing of the six (6) acre parcel. On January 1 of each year following, St. Augustine Beach will pay St. Johns County \$100,000 plus interest at the Prime Interest Rate until 50% of the total acquisition costs have been provided. The total acquisition costs will include monies spent by St. Johns County for site acquisition minus reimbursement monies St. Johns County receives from FCT.
3. **FCT Grant Application.** St. Johns County will make application to the FCT for reimbursement. St. Augustine Beach staff will work with St. Johns County staff in compiling the best FCT application. Prescoring of the site by County recreation staff is favorable for FCT grant receipt.
4. **Park Development.** St. Johns County and St. Augustine Beach will work cooperatively to develop a park plan. Park planning and construction monies required for park development will be shared equally between the County and the City. The City will own a beach access tract just north and east of the six (6) acre site per the London Tract PUD, which will provide beach access for this park site.

IN WITNESS WHEREOF, the parties have caused this Memorandum of Understanding to be executed and their signatures to be affixed hereto.

**BOARD OF COUNTY COMMISSIONERS
ST. JOHNS COUNTY, FLORIDA**

By: _____
Bruce A. Maguire, Chairman

ATTEST: Cheryl Strickland, Clerk

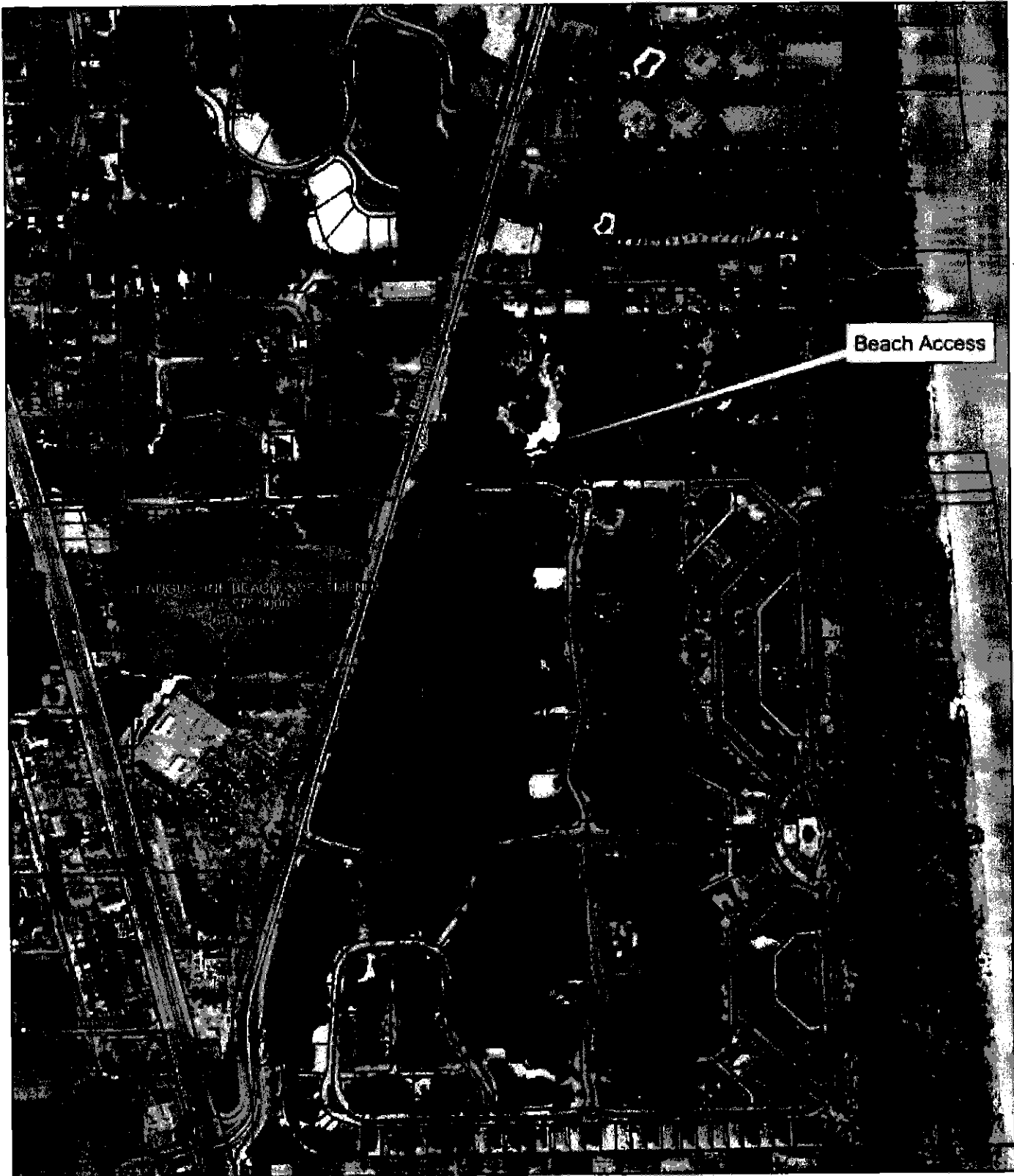
By: _____
Deputy Clerk

**CITY OF ST. AUGUSTINE BEACH, FLORIDA
A MUNICIPAL CORPORATION**

By: _____
Frank Charles, Mayor

ATTEST: Max Royle, City Manager

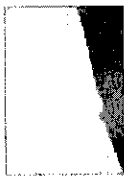
By: _____
City Manager



Beach Access

ST. AUGUSTINE BEACH SYSTEM

ST. AUGUSTINE BEACH SYSTEM



St. Johns County
Real Estate Division
(904) 823-4445
Date: 4/08/05

St. Augustine Beach Park

0 250 500 1,000 Feet



DISCLAIMER:
This map is for reference use only.
Data provided are derived from multiple
sources with varying levels of accuracy.

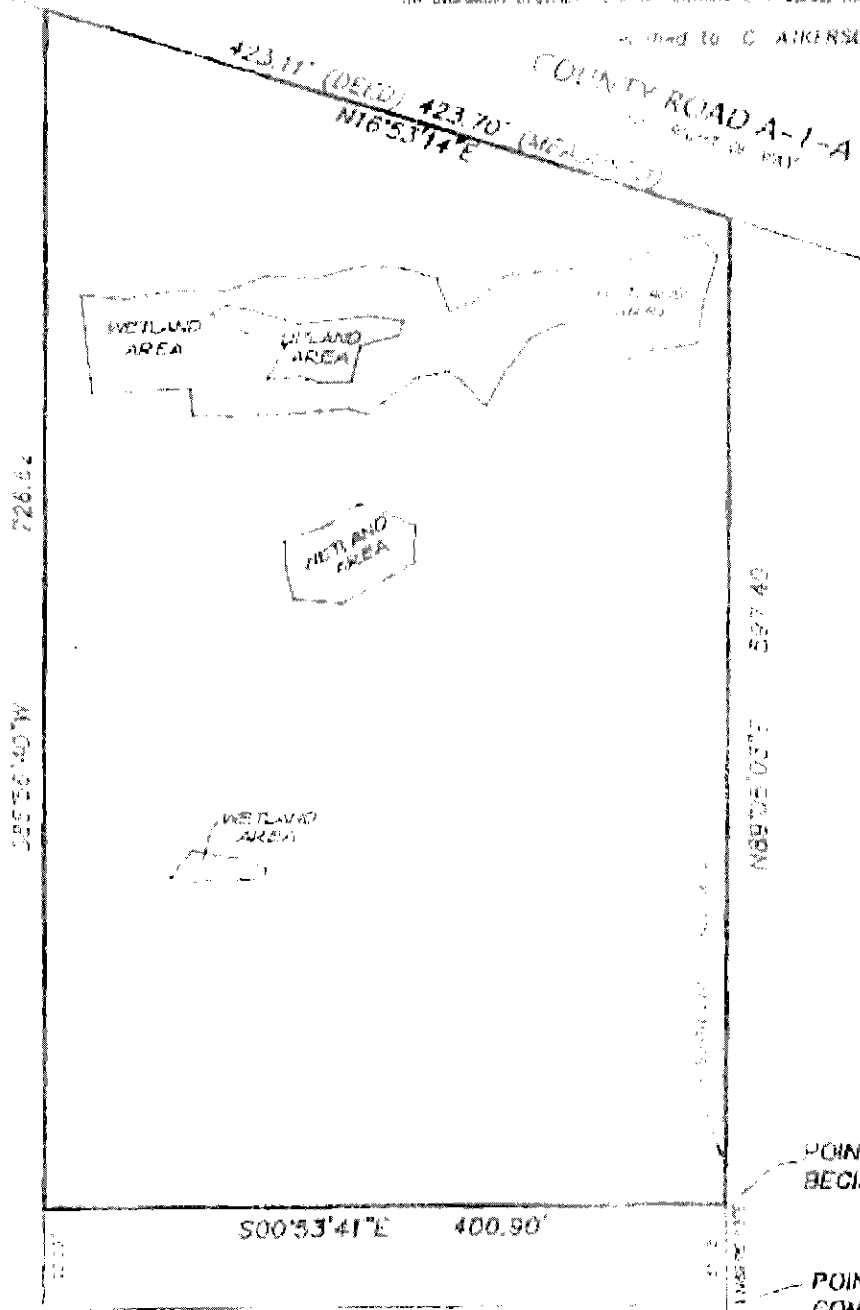
MAP SHOWING SKETCH OF

A parcel of land situated in Government Lot 8, Section 3, Township 8 South, Range 30 East, St. Johns County, Florida, and being more particularly bounded and described as follows: COMMENCE at the intersection of the South line of said Section 3 and the East right of way line of so-called Ewing Street (City of St. Augustine Beach Ordinance 99-24); thence North 00°06'01" East along the said South line of Section 3 a distance of 61.78 feet to the POINT OF BEGINNING; thence continue North 09°30'03" East, along said South line of Section 3 a distance of 587.40 feet to the West right of way line of County Road A-1-A (a distance of 113 feet East of said); thence North 16°53'14" East along the said West right of way line of County Road A-1-A a distance of 423.11 feet; thence South 88°38'49" West, 726.62 feet; thence South 01°52'17" West a distance of 400.90 feet to the POINT OF BEGINNING.

This statement drawn, signed and sealed this 22nd day, month of January,

2000, at St. Augustine, Florida, by

 C. ATKINSON, INC.



POINT OF BEGINNING

POINT OF COMMENCEMENT
 EAST R/W LINE OF
 VIGATED EWING STREET

EWING STREET (VIGATED FROM CITY OF ST. AUGUSTINE BEACH ORDINANCE 99-24)

| | | | | | | |
|---|----|----|-------|----|----|----|
| 15 | 37 | 30 | 41 | 43 | 44 | 45 |
| SUNNYSIDE GARDENS (MAP BOOK 4, PAGE 24) | | | BLOCK | | | |

THIS MAP BEARS THE SIGNATURE AND THE ORIGINAL PRESSED SEAL OF A FLORIDA LICENSED SURVEYOR AND SHAMPER. THIS DRAWING SKETCH IS NOT FOR MAP IS FOR INFORMATIONAL PURPOSES ONLY. THIS IS NOT A FIELD.

NOTES

LEGEND

DATE Jan. 22, 2000