

RESOLUTION NO. 2006- 138

**A RESOLUTION OF THE BOARD OF COUNTY COMMISSIONERS OF ST. JOHNS COUNTY, FLORIDA, ACCEPTING A SURVEY MAP THAT WILL ESTABLISH THE RIGHT-OF-WAY INTO THE COUNTY COMPLEX OF THE PORTION OF AVENUE "D" EXTENSION THAT IS OWNED BY ST. JOHNS COUNTY.**

**RECITALS**

**WHEREAS**, the right-of-way width and actual existence of the portion of Avenue "D" Extension shown on the survey map attached hereto as Exhibit "A", incorporated by reference and made a part hereof, has never been officially established; and

**WHEREAS**, if the Board of County Commissioners officially accepts the survey map establishing the right-of-way width and existence of the road, the map will be entered into the public records as a County road therefore clearing any question of the right-of-way width or legal access on Avenue "D" Extension into the County Complex; and

**WHEREAS**, it is in the best interest of the County to accept the survey map to provide clear ownership and width for permitting.

**NOW THEREFORE, BE IT RESOLVED**, by the Board of County Commissioners of St. Johns County, Florida as follows:

Section 1. The above recitals are incorporated by reference into the body of this Resolution and such recitals are adopted as findings of fact.

Section 2. Upon acceptance of the survey map by the Board of County Commissioners, the Clerk of Circuit Court is hereby instructed to file the original map in the Public Records of St. Johns County.

**PASSED AND ADOPTED** by the Board of County Commissioners of St. Johns County, this 16 day of May, 2006.

**BOARD OF COUNTY COMMISSIONERS  
OF ST. JOHNS COUNTY, FLORIDA**

By: James E. Bryant  
James E. Bryant, Chairman

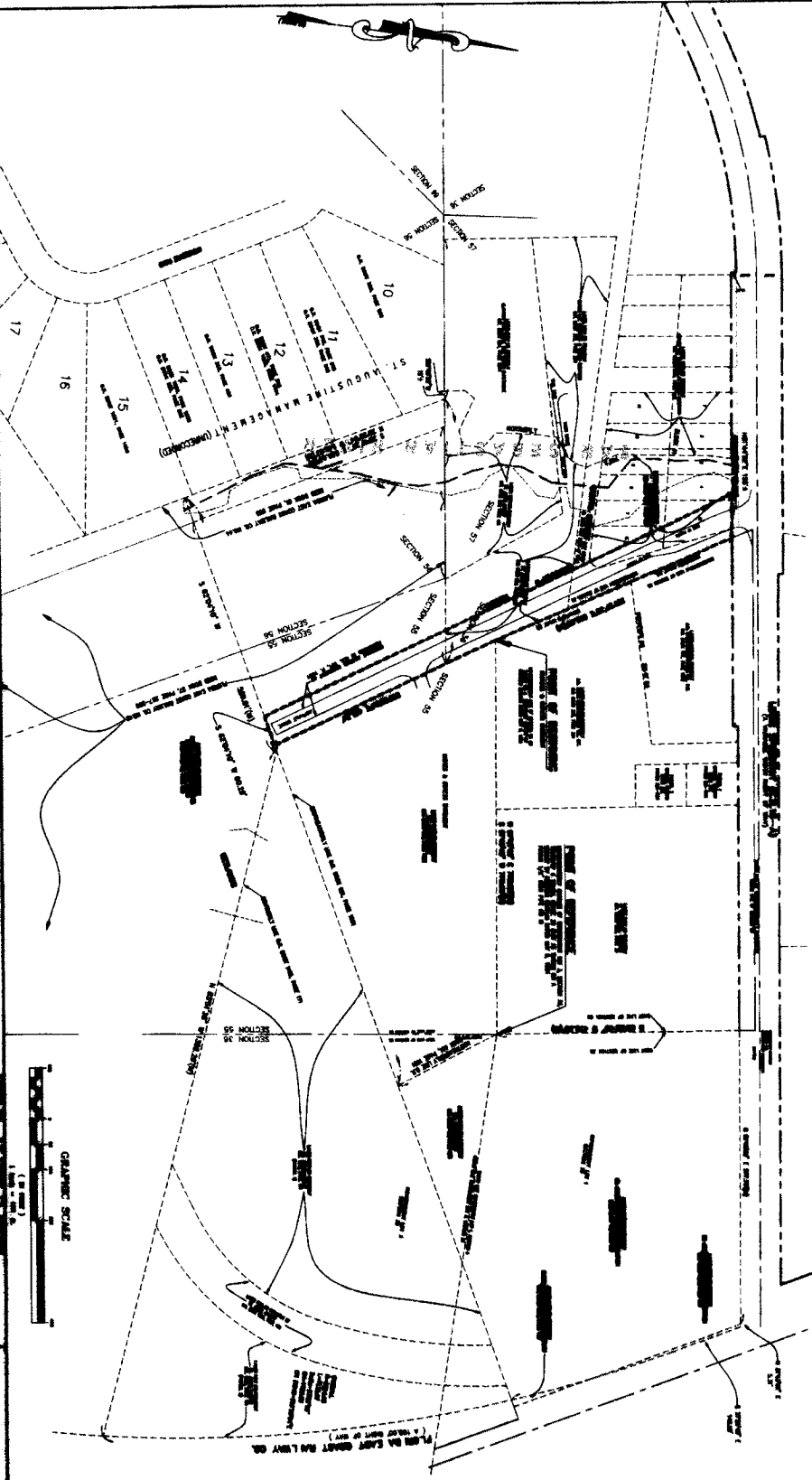
**ATTEST: Cheryl Strickland, Clerk of Court** RENDITION DATE 5/19/2006

By: Robin S. Place  
Deputy Clerk



**MAP SHOWING SPECIFIC PURPOSE SURVEY OF:  
A PORTION OF SECTION 26 AND THE FRANCIS J. PATO GRANT SECTION 25,  
TOWNSHIP 6 SOUTH, RANGE 20 EAST, ST. JOHNS COUNTY, FLORIDA.**

A PORTION OF SECTION 26 AND THE FRANCIS J. PATO GRANT SECTION 25, TOWNSHIP 6 SOUTH, RANGE 20 EAST, ST. JOHNS COUNTY, FLORIDA, WERE SPECIFICALLY SURVEYED BY THE ST. JOHNS COUNTY ENGINEER, ST. JOHNS COUNTY, FLORIDA, ON FEBRUARY 1, 1978, FOR THE PURPOSES OF THE SPECIFIC PURPOSE SURVEY OF THE PORTION OF SECTION 26 AND THE FRANCIS J. PATO GRANT SECTION 25, TOWNSHIP 6 SOUTH, RANGE 20 EAST, ST. JOHNS COUNTY, FLORIDA, SHOWN ON THIS MAP. THE SURVEY WAS CONDUCTED IN ACCORDANCE WITH THE REQUIREMENTS OF THE FLORIDA SURVEYING AND MAPPING ACT, CHAPTER 173, F.S., AND THE RULES AND REGULATIONS OF THE BOARD OF SURVEYING AND MAPPING, FLORIDA, CHAPTER 173-10, F.A.C. THE SURVEY WAS CONDUCTED BY THE ST. JOHNS COUNTY ENGINEER, ST. JOHNS COUNTY, FLORIDA, WHO IS A LICENSED SURVEYOR IN THE STATE OF FLORIDA. THE SURVEY WAS CONDUCTED IN ACCORDANCE WITH THE REQUIREMENTS OF THE FLORIDA SURVEYING AND MAPPING ACT, CHAPTER 173, F.S., AND THE RULES AND REGULATIONS OF THE BOARD OF SURVEYING AND MAPPING, FLORIDA, CHAPTER 173-10, F.A.C. THE SURVEY WAS CONDUCTED BY THE ST. JOHNS COUNTY ENGINEER, ST. JOHNS COUNTY, FLORIDA, WHO IS A LICENSED SURVEYOR IN THE STATE OF FLORIDA.



**LEGEND**

1. 1/4 SECTION 26  
2. 1/4 SECTION 25  
3. 1/4 SECTION 25  
4. 1/4 SECTION 25  
5. 1/4 SECTION 25  
6. 1/4 SECTION 25  
7. 1/4 SECTION 25  
8. 1/4 SECTION 25  
9. 1/4 SECTION 25  
10. 1/4 SECTION 25  
11. 1/4 SECTION 25  
12. 1/4 SECTION 25  
13. 1/4 SECTION 25  
14. 1/4 SECTION 25  
15. 1/4 SECTION 25  
16. 1/4 SECTION 25  
17. 1/4 SECTION 25

**PROJECT NUMBER**  
101-120

**DATE**  
FEBRUARY 1, 1978

**BY**  
ST. JOHNS COUNTY ENGINEER

**FOR**  
ST. JOHNS COUNTY

**COMPILED BY**  
ST. JOHNS COUNTY ENGINEER

**GRAPHIC SCALE**  
1" = 100'

**PERMIT-HILLS and ASSOCIATES, INC.**  
SURVEYING AND MAPPING CONSULTANTS  
1000 N. W. 10th Street, Suite 100  
Fort Lauderdale, Florida 33304  
(305) 461-1111