

RESOLUTION NO. 2006- 344

A RESOLUTION BY THE BOARD OF COUNTY COMMISSIONERS OF ST. JOHNS COUNTY, FLORIDA, ACCEPTING A DEED OF DEDICATION FROM ELKTON GREEN, INC., A FLORIDA CORPORATION TO ST. JOHNS COUNTY IN CONNECTION WITH THE SILVERLEAF PLANTATION DRI DEVELOPMENT ORDER AFFORDABLE HOUSING REQUIREMENTS.

RECITALS

WHEREAS, pursuant to Special Condition 26 of the Silverleaf Plantation DRI Development Order, the Developer has voluntarily agreed to donate to St. Johns County 200 platted lots within the Armstrong Addition Subdivision for affordable housing; and

WHEREAS, Elkton Green, Inc., a Florida corporation has executed and presented to St. Johns County a Deed of Dedication, attached hereto as Exhibit "A", incorporated by reference and made a part hereof, conveying the above mentioned lots; and

WHEREAS, a Memorandum from Tom Crawford, Director of Housing and Community Services, is attached hereto as Exhibit "B", incorporated by reference and made a part hereof, in support of accepting the lots.

NOW, THEREFORE, BE IT RESOLVED by the Board of County Commissioners of St. Johns County, Florida, as follows:

Section 1. The above recitals are incorporated by reference into the body of this Resolution and such recitals are adopted as findings of fact.

Section 2. The above described Deed of Dedication is hereby accepted by the Board of County Commissioners for the purposes mentioned above.

Section 3. The Clerk is instructed to record the original Deed of Dedication in the Public Records of St. Johns County, Florida.

PASSED AND ADOPTED this 17th day of Oct., 2006.

**BOARD OF COUNTY COMMISSIONERS
OF ST. JOHNS COUNTY, FLORIDA**

By: James E. Bryant

James E. Bryant, Chairman

ATTEST: Cheryl Strickland, Clerk

By: Patricia McGrande
Deputy Clerk

RENDITION DATE 10/18/06



Exhibit "A" to Resolution

THIS DOCUMENT PREPARED
BY AND RETURN TO:

G. TODD COTTRILL
PAPPAS METCALF JENKS & MILLER, P.A.
245 RIVERSIDE AVENUE, SUITE 400
JACKSONVILLE, FL 32202

DEED OF DEDICATION

THIS INDENTURE, made this ____ day of _____, 2006, between **ELKTON GREEN, INC.**, a Florida corporation, whose address is 3030 Hartley Road, Suite 300, Jacksonville, Florida 32257, ("Grantor"), and **ST. JOHNS COUNTY, FLORIDA**, a political subdivision of the State of Florida, whose address is 4020 Lewis Speedway, St. Augustine, Florida 32084, ("Grantee").

WITNESSETH: that for and in consideration of the acceptance of this Dedication by the Grantee, said Grantor does hereby give, grant, dedicate, and convey to the Grantee, its successors and assigns forever, the following described land, situate in St. Johns County, Florida, to wit:

All of Block 5; all of Block 6, except the East 50 feet of Lot 8; Lots 1 to 6, Block 7; all of Blocks 8 to 11; all of Blocks 16 and 17; all of Block "B"; Lots 1, 4, 9, 10, 11, 12, 13 and 14, Block 23; Lots 3, 6, 7, 9, 10, 11 and 14, Block 24; all of Block 26 and 27; Lots 1 to 10, Block 36; Lots 1 to 7, Block 37, all in Armstrong Addition, according to plat thereof recorded at Plat Book 6, page 14, of the public records of St. Johns County, Florida.

And

Lots 1, 5, 8, 9, 12, 13, 14 and 16, Block "D"; Lots 7 and 8, Block "E", Lots 7, 9, 11, 13, 14, 15, 16, 17, 18, 19, 20, 21 and 22, Block "F", Lots 10, 11 and 14, Block "L", according to the Williams and Jerry Subdivision Plat of James J. Harvey on file in the office of the County Clerk at Map Book 2, page 14, of the public records of St. Johns County, Florida.

TO HAVE AND HOLD the same unto the Grantees, its successors and assigns forever.

SUBJECT TO those ad valorem taxes and other assessments for the year 2006 and subsequent years, and those matters described on the attached Exhibit "A" ("Permitted Exceptions").

AND the Grantor hereby covenants with said Grantee that, except for the Permitted Exceptions, the Grantor is lawfully seized of said land in fee simple; that the Grantor has good right and lawful authority to sell and convey said land, and hereby warrants the title to said land and will defend the same against the lawful claims of all persons whomsoever.

IN WITNESS WHEREOF, the said Grantor has hereunto set its hand and seal the day and year first above written.

Signed, seal and delivered
In the presence of:

GRANTOR:

ELKTON GREEN, INC., a Florida corporation

Deborah H. Dunbar
Print Name: DEBORAH H. DUNBAR
Robert L. Hahn
Print Name: ROBERT L. HAHN

By: David W. Hutson
Print Name: David W. Hutson
Its: President

STATE OF FLORIDA
COUNTY OF DUVAL

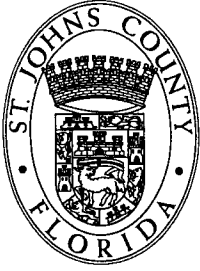
The foregoing instrument was acknowledged before me this 26th day of September, 2006, by David W. Hutson as President of Elkton Green, Inc., a Florida corporation, on behalf of the corporation. He is personally known to me ~~or has produced~~ _____ as identification.

Deborah H. Dunbar
(Print Name DEBORAH H. DUNBAR)
NOTARY PUBLIC
State of Florida at Large
Commission # _____
My Commission Expires:
Personally Known ✓
or Produced ID _____
(check one of the above)
Type of Identification Produced _____

EXHIBIT "A"

("Permitted Exceptions")

1. Florida Power & Light Easement as recorded at Deed Book 72, page 530, of the public records of St. Johns County, Florida.



ST. JOHNS COUNTY
HOUSING & COMMUNITY SERVICES DIVISION
3149 Ponce De Leon Blvd., Ste. 9
St. Augustine, Florida 32084

I N T E R O F F I C E M E M O R A N D U M

TO: Laurie Braddock
FROM: Tom Crawford
SUBJECT: SilverLeaf Affordable Housing Lots
DATE: September 21, 2006

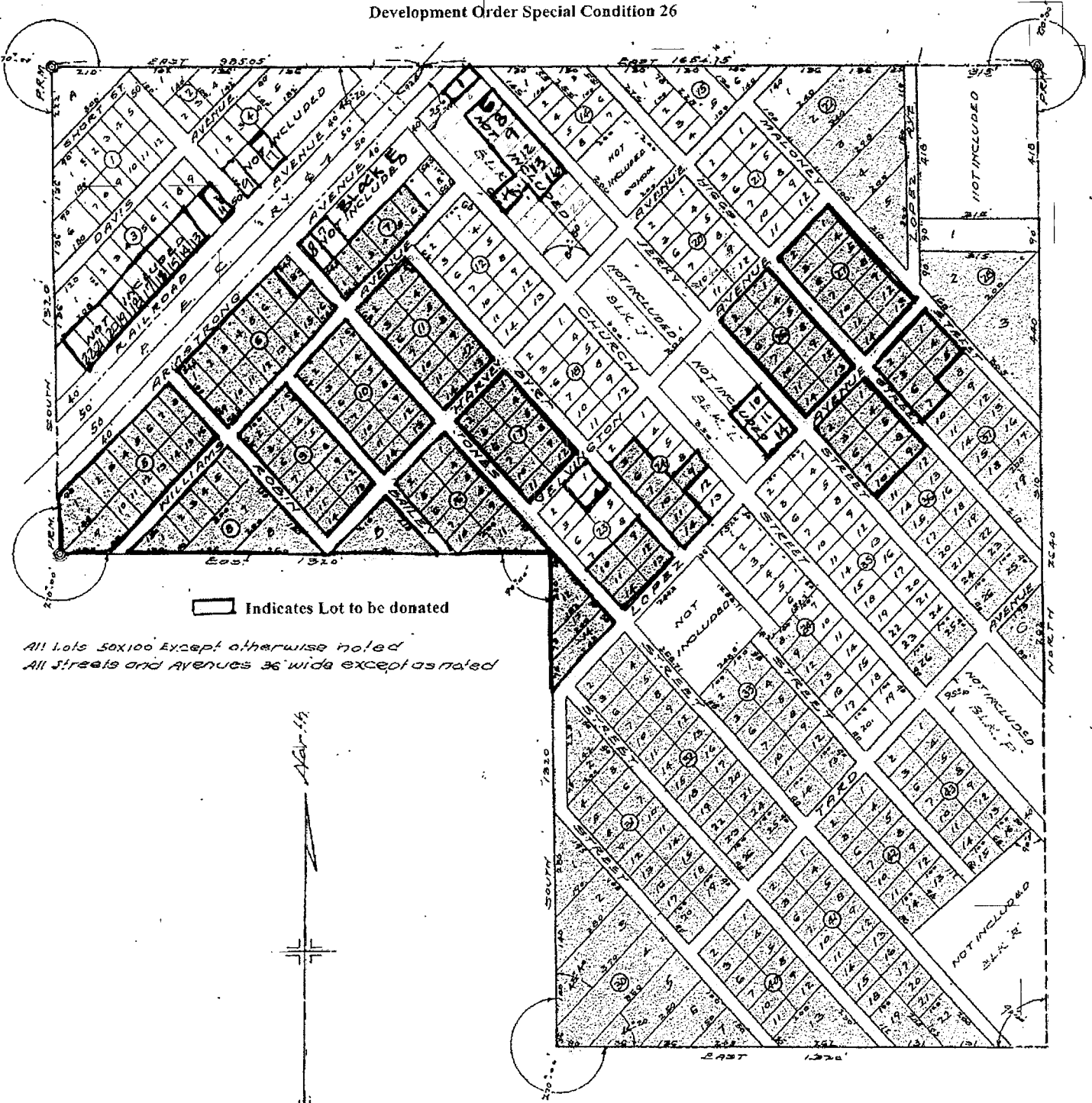
Based upon our meeting yesterday at your office, I have no objection to accepting the 200 lots at this time. However, in the event that there are any environmental impacts that prevent construction on any of those lots, we will work with the developer to substitute acceptable lots as required in the Development Order.

Let me know if you have any additional questions and thanks for your help.

ARMSTRONG

Donation of Lots for Affordable Housing

SILVERLEAF PLANTATION DRI
Development Order Special Condition 26



□ Indicates Lot to be donated

All Lots 50x100 Except otherwise noted
All Streets and Avenues 36' wide except as noted

ARMSTRONG

Donation of Lots for Affordable Housing

SILVERLEAF PLANTATION DRI
Development Order Special Condition 26

