

RESOLUTION NO. 2006- 358
RESOLUTION OF THE BOARD OF COUNTY
COMMISSIONERS OF ST. JOHNS COUNTY, FLORIDA
APPROVING A SUBDIVISION PLAT FOR DURBIN CROSSING NORTH PHASE 1-UNIT 3

WHEREAS, DURBIN CROSSING NORTH, LLC, A FLORIDA LIMITED LIABILITY COMPANY, as owner, has applied to the Board of County Commissioners of St. Johns County, Florida for approval to record a subdivision plat known as DURBIN CROSSING NORTH PHASE I- UNIT 3.

NOW , THEREFORE BE IT RESOLVED BY THE BOARD OF COUNTY COMMISSIONERS OF ST. JOHNS COUNTY, FLORIDA, as follows:

Section 1. The above-described subdivision plat and its dedicated areas depicted thereon are conditionally approved and accepted by the Board of County Commissioners of St. Johns County, Florida subject to Sections 2, 3, 4, 5 and 6.

Section 2. A Construction Bond , in the amount of \$3,497,120.16 has been filed with the Clerk of Courts office.

Section 3. A Maintenance Bond, in the amount of \$ 861,114.72, will be required.

Section 4. The approval and acceptance described in Section 1 shall not take effect until the Clerk has received a title opinion, certificate, or policy pertaining to the real property that is the subject of the a forenamed subdivision plat which opinion, certificate or policy is in a form acceptable to the County Attorney or Assistant County Attorney.

Section 5. The Clerk is instructed to file and record the consent and joinder (s) to the plat executed by all mortgages identified in the title opinion or certificate of the title in Section 4.

Section 6. The approval and acceptance described in Section 1 shall not take effect until the plat has been signed by each of the following departments, person or offices:

- a) Chairman or Vice-Chairman of the Board of County Commissioners of St. Johns County, Florida;
- b) Office of the County Attorney;
- c) County Planning and Zoning Department;
- d) Office of the County Surveyor; and
- e) Clerk of Courts.

The Clerk shall not sign or accept the Plat for recording until it has been signed by each of the above persons or entities described in a) through d) above. If the plat is not signed and accepted by the Clerk for recording within 14 days from the date hereof, then the above-described conditional approval shall automatically terminate. If the plat is signed by the Clerk on or before such time, the conditions described herein shall be deemed to have been met.

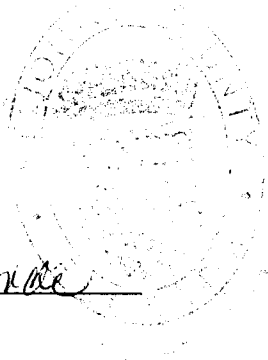
ADOPTED by the Board of County Commissioners of St. Johns County, Florida, this 17th day of October, 2006.

BOARD OF COUNTY COMMISSIONERS
OF ST. JOHNS COUNTY, FLORIDA

BY: James E. Bryant
James E. Bryant, Chairman

ATTEST: Cheryl Strickland

Patricia DeGranda
Deputy Clerk



RENDITION DATE 10/18/06

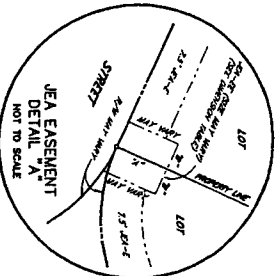
DURBIN CROSSING NORTH PHASE 1 - UNIT 3

A PORTION OF SECTION 1, TOWNSHIP 5 SOUTH, RANGE 27 EAST, ST. JOHNS COUNTY, FLORIDA

STATE PLANE COORDINATE
N 209850.622
E 480429.320

CURVE	CENTRAL ANGLE	RADIUS	ARC LENGTH	CHORD BEARING	CHORD DISTANCE
C1	30.00°00"	25.00'	13.09'	S18°26'14"W	12.94'
C2	30.00°00"	25.00'	13.09'	S18°26'14"W	12.94'
C3	79.49°23"	25.00'	34.83'	S06°28'27"E	32.08'
C4	101.0°37"	480.00'	81.71'	N51°28'27"W	81.80'

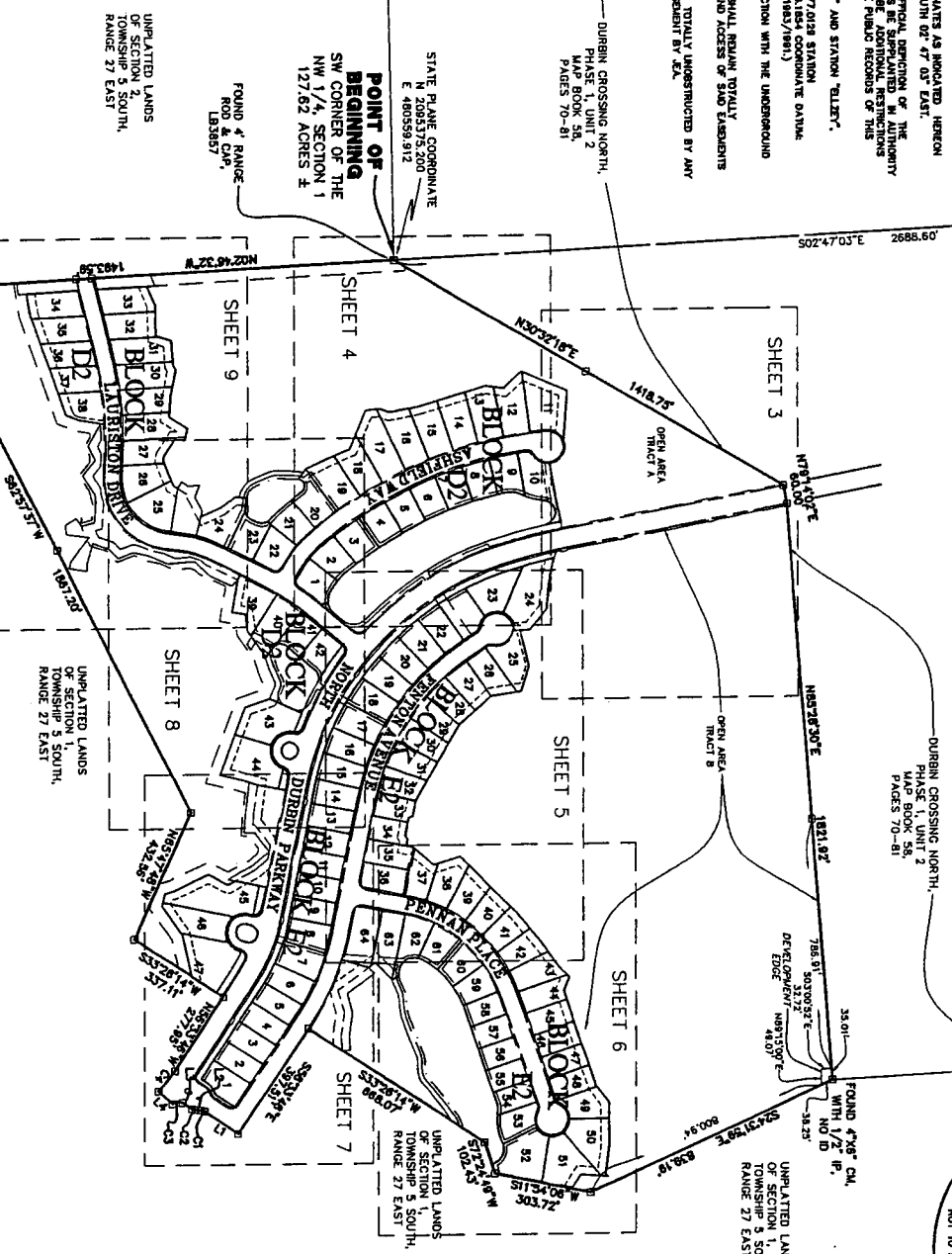
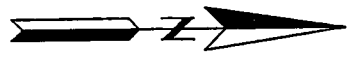
POINT OF REFERENCE
DURBIN CROSSING NORTH
PHASE 1 - UNIT 3
NORTHWEST CORNER SECTION 1



JEA DIMENSION TABLE

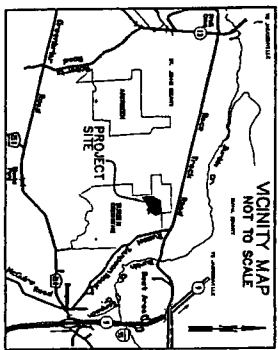
NO.	DESCRIPTION	WIDTH	LENGTH
1	DRIVEWAY	10.00'	10.00'
2	WALKWAY	5.00'	10.00'
3	TRUCK	10.00'	10.00'
4	COMMONS	10.00'	10.00'

- NOTES:
1. 0 DENOTES PERMANENT REFERENCE MONUMENT STUMPED UNUSABLE, UNLESS OTHERWISE NOTED.
 2. REFERENCE POINTS ARE REFERENCED TO THE STATE PLANE COORDINATE AS INDICATED HEREON AND ARE BASED ON THE RESIDENT LINE OF SECTION 1 AS BEING SOUTH OF 47° 00' EAST.
 3. WORKED THIS PLAN AS RECORDED IN THE PUBLIC RECORDS OF THE PUBLIC RECORDS OF ST. JOHNS COUNTY, FLORIDA. THIS PLAN IS THE OFFICIAL RECORD OF THE SURVEY AND IS SUBJECT TO THE REVISIONS AND AMENDMENTS THAT MAY BE MADE BY THE PUBLIC RECORDS OF THIS COUNTY.
 4. COORDINATES BASED ON GPS OBSERVATION OF STATION TOWNSHIP 2' AND STATION 'TOLLEY', NATIONAL GEODETIC SURVEY 1981 ADJUSTMENT.
 5. STATION 'TOLLEY' COORDINATES: N 209850.622 E 480429.320
 6. STATION 'TOLLEY' COORDINATES: N 209850.622 E 480429.320
 7. STATE PLANE COORDINATE: N 209850.622 E 480429.320
 8. STATE PLANE COORDINATE: N 209850.622 E 480429.320
 9. STATE PLANE COORDINATE: N 209850.622 E 480429.320
 10. STATE PLANE COORDINATE: N 209850.622 E 480429.320
 11. STATE PLANE COORDINATE: N 209850.622 E 480429.320
 12. STATE PLANE COORDINATE: N 209850.622 E 480429.320
 13. STATE PLANE COORDINATE: N 209850.622 E 480429.320
 14. STATE PLANE COORDINATE: N 209850.622 E 480429.320
 15. STATE PLANE COORDINATE: N 209850.622 E 480429.320
 16. STATE PLANE COORDINATE: N 209850.622 E 480429.320
 17. STATE PLANE COORDINATE: N 209850.622 E 480429.320
 18. STATE PLANE COORDINATE: N 209850.622 E 480429.320
 19. STATE PLANE COORDINATE: N 209850.622 E 480429.320
 20. STATE PLANE COORDINATE: N 209850.622 E 480429.320
 21. STATE PLANE COORDINATE: N 209850.622 E 480429.320
 22. STATE PLANE COORDINATE: N 209850.622 E 480429.320
 23. STATE PLANE COORDINATE: N 209850.622 E 480429.320
 24. STATE PLANE COORDINATE: N 209850.622 E 480429.320
 25. STATE PLANE COORDINATE: N 209850.622 E 480429.320
 26. STATE PLANE COORDINATE: N 209850.622 E 480429.320
 27. STATE PLANE COORDINATE: N 209850.622 E 480429.320
 28. STATE PLANE COORDINATE: N 209850.622 E 480429.320
 29. STATE PLANE COORDINATE: N 209850.622 E 480429.320
 30. STATE PLANE COORDINATE: N 209850.622 E 480429.320
 31. STATE PLANE COORDINATE: N 209850.622 E 480429.320
 32. STATE PLANE COORDINATE: N 209850.622 E 480429.320
 33. STATE PLANE COORDINATE: N 209850.622 E 480429.320
 34. STATE PLANE COORDINATE: N 209850.622 E 480429.320
 35. STATE PLANE COORDINATE: N 209850.622 E 480429.320
 36. STATE PLANE COORDINATE: N 209850.622 E 480429.320
 37. STATE PLANE COORDINATE: N 209850.622 E 480429.320
 38. STATE PLANE COORDINATE: N 209850.622 E 480429.320
 39. STATE PLANE COORDINATE: N 209850.622 E 480429.320
 40. STATE PLANE COORDINATE: N 209850.622 E 480429.320
 41. STATE PLANE COORDINATE: N 209850.622 E 480429.320
 42. STATE PLANE COORDINATE: N 209850.622 E 480429.320
 43. STATE PLANE COORDINATE: N 209850.622 E 480429.320
 44. STATE PLANE COORDINATE: N 209850.622 E 480429.320
 45. STATE PLANE COORDINATE: N 209850.622 E 480429.320
 46. STATE PLANE COORDINATE: N 209850.622 E 480429.320
 47. STATE PLANE COORDINATE: N 209850.622 E 480429.320
 48. STATE PLANE COORDINATE: N 209850.622 E 480429.320
 49. STATE PLANE COORDINATE: N 209850.622 E 480429.320
 50. STATE PLANE COORDINATE: N 209850.622 E 480429.320
 51. STATE PLANE COORDINATE: N 209850.622 E 480429.320
 52. STATE PLANE COORDINATE: N 209850.622 E 480429.320
 53. STATE PLANE COORDINATE: N 209850.622 E 480429.320
 54. STATE PLANE COORDINATE: N 209850.622 E 480429.320
 55. STATE PLANE COORDINATE: N 209850.622 E 480429.320
 56. STATE PLANE COORDINATE: N 209850.622 E 480429.320
 57. STATE PLANE COORDINATE: N 209850.622 E 480429.320
 58. STATE PLANE COORDINATE: N 209850.622 E 480429.320
 59. STATE PLANE COORDINATE: N 209850.622 E 480429.320
 60. STATE PLANE COORDINATE: N 209850.622 E 480429.320
 61. STATE PLANE COORDINATE: N 209850.622 E 480429.320
 62. STATE PLANE COORDINATE: N 209850.622 E 480429.320
 63. STATE PLANE COORDINATE: N 209850.622 E 480429.320
 64. STATE PLANE COORDINATE: N 209850.622 E 480429.320
 65. STATE PLANE COORDINATE: N 209850.622 E 480429.320
 66. STATE PLANE COORDINATE: N 209850.622 E 480429.320
 67. STATE PLANE COORDINATE: N 209850.622 E 480429.320
 68. STATE PLANE COORDINATE: N 209850.622 E 480429.320
 69. STATE PLANE COORDINATE: N 209850.622 E 480429.320
 70. STATE PLANE COORDINATE: N 209850.622 E 480429.320
 71. STATE PLANE COORDINATE: N 209850.622 E 480429.320
 72. STATE PLANE COORDINATE: N 209850.622 E 480429.320
 73. STATE PLANE COORDINATE: N 209850.622 E 480429.320
 74. STATE PLANE COORDINATE: N 209850.622 E 480429.320
 75. STATE PLANE COORDINATE: N 209850.622 E 480429.320
 76. STATE PLANE COORDINATE: N 209850.622 E 480429.320
 77. STATE PLANE COORDINATE: N 209850.622 E 480429.320
 78. STATE PLANE COORDINATE: N 209850.622 E 480429.320
 79. STATE PLANE COORDINATE: N 209850.622 E 480429.320
 80. STATE PLANE COORDINATE: N 209850.622 E 480429.320
 81. STATE PLANE COORDINATE: N 209850.622 E 480429.320
 82. STATE PLANE COORDINATE: N 209850.622 E 480429.320
 83. STATE PLANE COORDINATE: N 209850.622 E 480429.320
 84. STATE PLANE COORDINATE: N 209850.622 E 480429.320
 85. STATE PLANE COORDINATE: N 209850.622 E 480429.320
 86. STATE PLANE COORDINATE: N 209850.622 E 480429.320
 87. STATE PLANE COORDINATE: N 209850.622 E 480429.320
 88. STATE PLANE COORDINATE: N 209850.622 E 480429.320
 89. STATE PLANE COORDINATE: N 209850.622 E 480429.320
 90. STATE PLANE COORDINATE: N 209850.622 E 480429.320
 91. STATE PLANE COORDINATE: N 209850.622 E 480429.320
 92. STATE PLANE COORDINATE: N 209850.622 E 480429.320
 93. STATE PLANE COORDINATE: N 209850.622 E 480429.320
 94. STATE PLANE COORDINATE: N 209850.622 E 480429.320
 95. STATE PLANE COORDINATE: N 209850.622 E 480429.320
 96. STATE PLANE COORDINATE: N 209850.622 E 480429.320
 97. STATE PLANE COORDINATE: N 209850.622 E 480429.320
 98. STATE PLANE COORDINATE: N 209850.622 E 480429.320
 99. STATE PLANE COORDINATE: N 209850.622 E 480429.320
 100. STATE PLANE COORDINATE: N 209850.622 E 480429.320



LINE TABLE

LINE	BEARING	LENGTH
L1	S33°26'14"W	128.48'
L2	S03°26'14"W	16.60'
L3	S33°26'14"W	35.72'
L4	S43°36'51"W	80.00'



CERTIFICATE OF SURVEYOR

I, ROBERT M. ANGAS, SURVEYOR, DO HEREBY CERTIFY THAT THE ABOVE PLAN WAS PREPARED UNDER MY PERSONAL SUPERVISION AND THAT THE PLAT CONTAINS WITH ALL OF THE NECESSARY RECORDS OF THE SURVEY AS REQUIRED BY THE FLORIDA STATUTES.

ROBERT M. ANGAS, SURVEYOR
14775 ST. AUGUSTINE ROAD
JACKSONVILLE, FL 32258 (904) 642-8550

ROBERT M. ANGAS ASSOCIATES, INC.
14775 ST. AUGUSTINE ROAD
JACKSONVILLE, FL 32258 (904) 642-8550