

RESOLUTION NO. 2006- 416
RESOLUTION OF THE BOARD OF COUNTY
COMMISSIONERS OF ST. JOHNS COUNTY, FLORIDA
APPROVING A SUBDIVISION PLAT FOR COASTAL OAKS AT NOCATEE ~PHASE ONE

WHEREAS, TOLL JACKSONVILLE LIMITED PARTNERSHIP AS OWNER, has applied to the Board of County Commissioners of St. Johns County, Florida for approval to record a subdivision plat known as COASTAL OAKS AT NOCATEE ~PHASE ONE.

NOW, THEREFORE BE IT RESOLVED BY THE BOARD OF COUNTY COMMISSIONERS OF ST. JOHNS COUNTY, FLORIDA, as follows:

Section 1. The above-described subdivision plat and its dedicated areas depicted thereon are conditionally approved and accepted by the Board of County Commissioners of St. Johns County, Florida subject to Sections 2, 3, 4, and 5.

Section 2. A Construction Bond In the amount of \$7,800,086.72 has been filed with the Clerk's Office.

Section 3. A Maintenance Bond will not be required.

Section 4. The approval and acceptance described in Section 1 shall not take effect until the Clerk has received a title opinion, certificate, or policy pertaining to the real property that is the subject of the a forenamed subdivision plat which opinion, certificate or policy is in a form acceptable to the County Attorney or Assistant County Attorney.

Section 5. The approval and acceptance described in Section 1 shall not take effect until the plat has been signed by each of the following departments, person or offices:

- a) Chairman or Vice-Chairman of the Board of County Commissioners of St. Johns County, Florida;
- b) Office of the County Attorney;
- c) County Planning and Zoning Department;
- d) Office of the County Surveyor; and
- e) Clerk of Courts.

The Clerk shall not sign or accept the Plat for recording until it has been signed by each of the above persons or entities described in a) through d) above. If the plat is not signed and accepted by the Clerk for recording within 14 days from the date hereof, then the above-described conditional approval shall automatically terminate. If the plat is signed by the Clerk on or before such time, the conditions described herein shall be deemed to have been met.

ADOPTED by the Board of County Commissioners of St. Johns County, Florida, this 31 day of October, 2006.

BOARD OF COUNTY COMMISSIONERS
OF ST. JOHNS COUNTY, FLORIDA

BY: James E. Bryant
James E. Bryant, Chairman

ATTEST: Cheryl Strickland

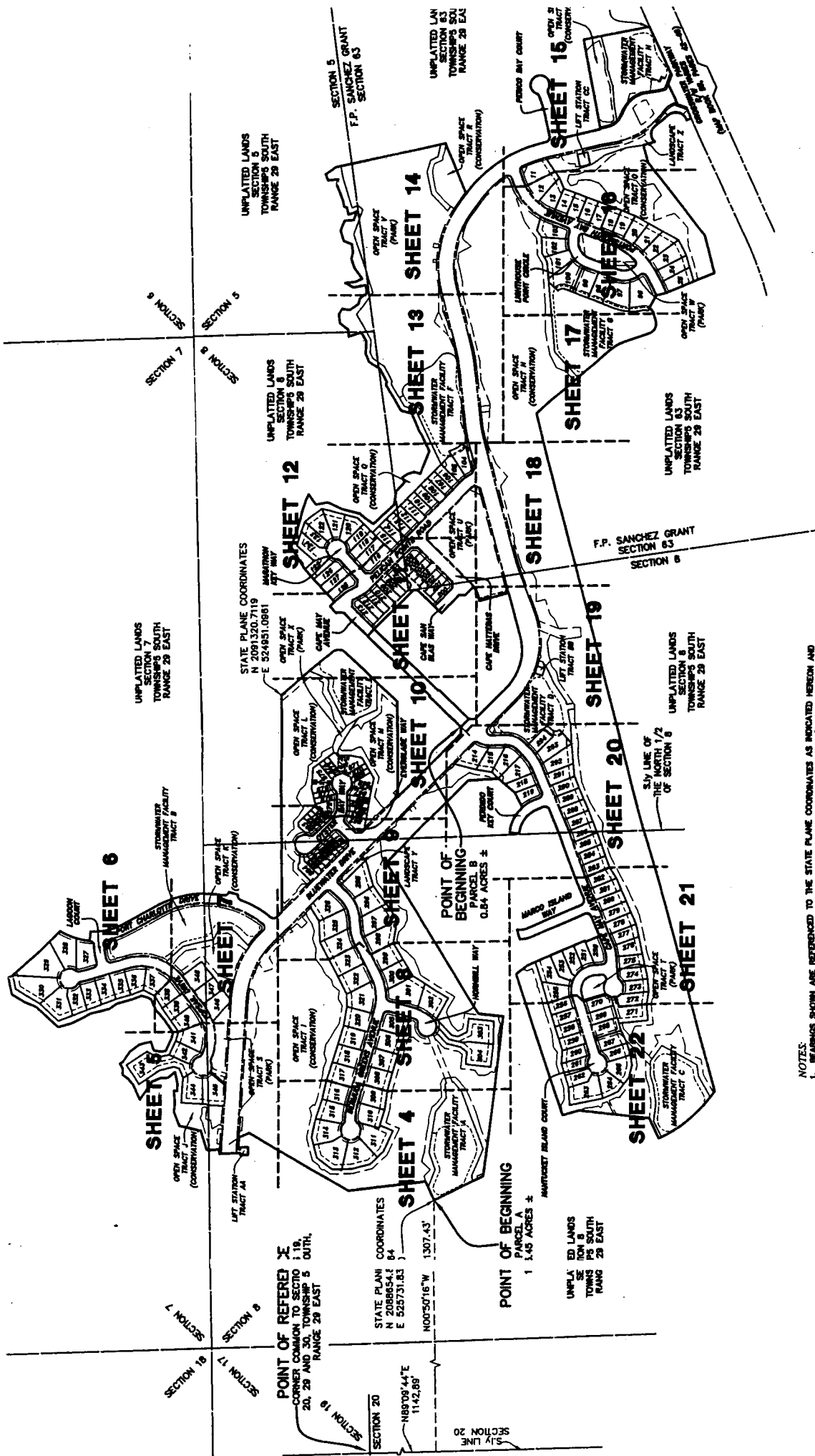
Patricia DeGrande
Deputy Clerk

RENDITION DATE 11-6-06



COASTAL OAKS AT NOCATEE ~ PHASE 1

A PORTION OF SECTIONS 5, 7 AND 8, TOGETHER WITH A PORTION OF SECTION 63 OF THE F. P. SANCHEZ GRANT, ALL LYING IN TOWNSHIP 5 SOUTH, RANGE 29 EAST, ST. JOHNS COUNTY, FLORIDA.



NOTES:

- BEARINGS SHOWN ARE REFERENCED TO THE STATE PLANE COORDINATES AS INDICATED HEREON AND ARE BASED ON THE SOUTHERLY LINE OF SECTION 20 AS BEING NORTH 86° 06' 44" EAST.
- NOTES: THIS PLAN, AS RECORDED IN ITS GRAPHIC FORM, IS THE OFFICIAL DEPICTION OF THE UNPLANNED LANDS DESCRIBED HEREON AND WILL IN NO CIRCUMSTANCES BE SUPPLANTED IN AUTHORITY BY ANY OTHER GRAPHIC OR DIGITAL FORM OF THE PLAN. THERE MAY BE ADDITIONAL RESTRICTIONS THAT ARE NOT DEPICTED ON THIS PLAN THAT MAY BE FOUND IN THE PUBLIC RECORDS OF THIS COUNTY.
- COORDINATES BASED ON GPS OBSERVATION OF STATION "TURNIN 2" AND STATION "TOLLEY", NATIONAL GEODETIC SURVEY, 1981 ADJUSTMENT. N 209233.832 E 509877.0129
STATION "TOLLEY" COORDINATES: N 2030467.866 E 524664.1804
DATUM: STATE PLANE IN U.S. SURVEY FEET (FLORIDA EAST ZONE 901, N.A.D. 1983/1984.)

LEGEND

- DENOTES SET P.M. 4"x4" ON STAMPED LB 3824 (UNLESS OTHERWISE NOTED)
- DENOTES SET 88 W/ P.M. CAP, STAMPED LB 3824
- DENOTES SET P.C. STAMPED LB 3824
- PERMANENT REFERENCE MONUMENT
- CONCRETE MONUMENT
- REBAR

