

RESOLUTION NO. 2007- 292
RESOLUTION OF THE BOARD OF COUNTY
COMMISSIONERS OF ST. JOHNS COUNTY, FLORIDA
APPROVING A SUBDIVISION PLAT FOR COUNTRYWALK

WHEREAS, COUNTRYWALK LLC, A FLORIDA LIMITED LIABILITY COMPANY AND WATSON CUSTOM HOME BUILDERS, INC., A FLORIDA CORPORATION, AS OWNERS, have applied to the Board of County Commissioners of St. Johns County, Florida for approval to record a subdivision plat known as COUNTRYWALK.

NOW, THEREFORE BE IT RESOLVED BY THE BOARD OF COUNTY COMMISSIONERS OF ST. JOHNS COUNTY, FLORIDA, as follows:

Section 1. The above-described subdivision plat and its dedicated areas depicted thereon are conditionally approved and accepted by the Board of County Commissioners of St. Johns County, Florida subject to Sections 2, 3, 4, 5 and 6.

Section 2. A Construction Bond in the amount of \$597,149.00 has been submitted to the Clerk of Courts office.

Section 3. A Maintenance Bond, in the amount of \$597,149.00, will be required.

Section 4. The approval and acceptance described in Section 1 shall not take effect until the Clerk has received a title opinion, certificate, or policy pertaining to the real property that is the subject of the a forenamed subdivision plat which opinion, certificate or policy is in a form acceptable to the County Attorney or Assistant County Attorney.

Section 5. The Clerk is instructed to file and record the consent and joinder (s) to the plat executed by all mortgages identified in the title opinion or certificate of the title in Section 4.

Section 6. The approval and acceptance described in Section 1 shall not take effect until the plat has been signed by each of the following departments, person or offices:


- a) Chairman or Vice-Chairman of the Board of County Commissioners of St. Johns County, Florida;
- b) Office of the County Attorney;
- c) County Planning and Zoning Department;
- d) Office of the County Surveyor; and
- e) Clerk of Courts.

The Clerk shall not sign or accept the Plat for recording until it has been signed by each of the above persons or entities described in a) through d) above. If the plat is not signed and accepted by the Clerk for recording within 14 days from the date hereof, then the above-described conditional approval shall automatically terminate. If the plat is signed by the Clerk on or before such time, the conditions described herein shall be deemed to have been met.

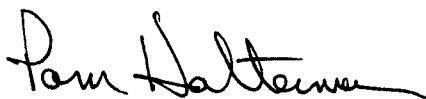
ADOPTED by the Board of County Commissioners of St. Johns County, Florida, this 16th day of October, 2007.



BOARD OF COUNTY COMMISSIONERS
OF ST. JOHNS COUNTY, FLORIDA

BY: 
Ben Rich, Chairman

ATTEST: Cheryl Strickland



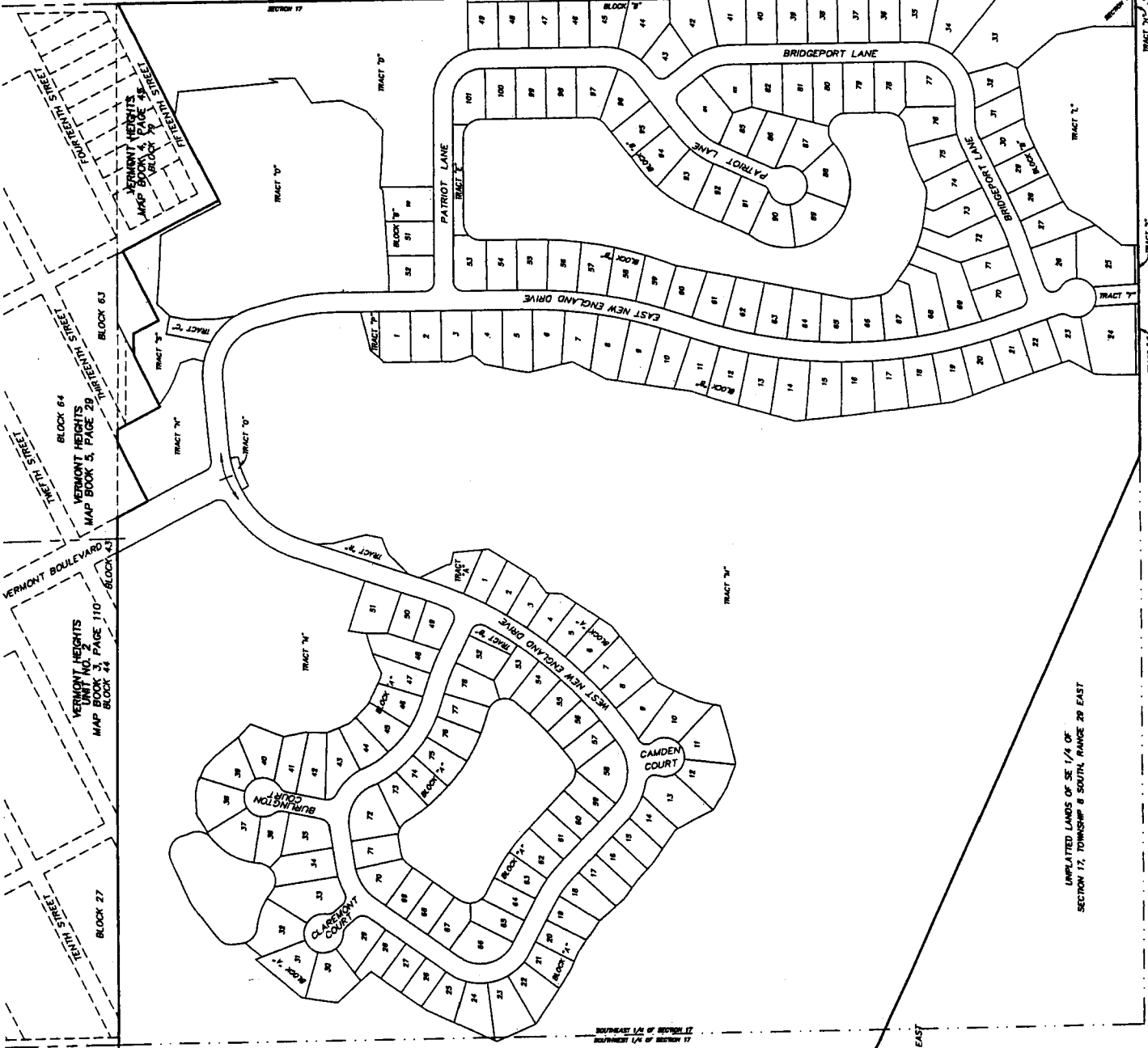
Deputy Clerk

RENDITION DATE 10/18/07

COUNTRY WALK

Being a portion of the Southeast 1/4, and the Southwest 1/4 of Section 17,
Township 8 South, Range 29 East, St. Johns County, Florida.

UNIT NO. 1
MAP BOOK 3, PAGE 77



ORCEL 104
PART 'C'

2017.6.3
21.188

TRACT 'W'

SOUTHWEST 1/4 OF SECTION 17
SOUTHWEST 1/4 OF SECTION 17

DS OF SW 1/4 OF
SECTION 8 SOUTH, RANGE 29 EAST

UNPLATTED LANDS OF SE 1/4 OF
SECTION 17, TOWNSHIP 8 SOUTH, RANGE 29 EAST

UNPLATTED LANDS OF
SECTION 20, TOWNSHIP 8 SOUTH, RANGE 29 EAST

TRACT 'Y'

TRACT 'Z'

TRACT 'A'

TRACT 'B'

TRACT 'C'

TRACT 'D'

TRACT 'E'

UNPLATTED LANDS OF
SECTION 16, TOWNSHIP 8 SOUTH, RANGE 29 EAST

TRACT 'F'

TRACT 'G'

TRACT 'H'

Point	Northing	Easting	Description
1	1907248.3397	531504.7972	PRM - SE Corner Section 17
2	1909057.5397	528376.2166	PRM - NLY Corner Section 17

FILE POINT #1
N. 835543378

UNPLATTED LANDS OF
SECTION 21, TOWNSHIP 8 SOUTH, RANGE 29 EAST

TRACT 'I'

TRACT 'J'

TRACT 'K'

TRACT 'L'

TRACT 'M'

TRACT 'N'

TRACT 'O'

PREPARED BY:
RICHARD A. MILLER & ASSOCIATES, INC.
REGISTERED PROFESSIONAL SURVEYOR
PROFESSIONAL LICENSE NO. 12000
14750 WINDHURST BLVD., SUITE 200
MARIETTA, FLORIDA 32156