

RESOLUTION NO. 2007- 311  
RESOLUTION OF THE BOARD OF COUNTY  
COMMISSIONERS OF ST. JOHNS COUNTY, FLORIDA  
APPROVING A SUBDIVISION PLAT FOR ASHLEY OAKS

WHEREAS, OXFORD PARTNERS, LLC, A LIMITED LIABILITY COMPANY, has applied to the Board of County Commissioners of St. Johns County, Florida for approval to record a subdivision plat known as ASHELY OAKS.

NOW, THEREFORE BE IT RESOLVED BY THE BOARD OF COUNTY COMMISSIONERS OF ST. JOHNS COUNTY, FLORIDA, as follows:

Section 1. The above-described subdivision plat and its dedicated areas depicted thereon are conditionally approved and accepted by the Board of County Commissioners of St. Johns County, Florida subject to Sections 2, 3, 4, 5 and 6.

Section 2. A Construction Bond, in the amount of \$701,328.79, has been filed with the Clerks' office.

Section 3. A Maintenance Bond, in the amount of \$342,823.71 will be required.

Section 4. The approval and acceptance described in Section 1 shall not take effect until the Clerk has received a title opinion, certificate, or policy pertaining to the real property that is the subject of the a forenamed subdivision plat which opinion, certificate or policy is in a form acceptable to the County Attorney or Assistant County Attorney.

Section 5. The Clerk is instructed to file and record the consent and joinder (s) to the plat executed by all mortgages identified in the title opinion or certificate of the title in Section 4.

Section 6. The approval and acceptance described in Section 1 shall not take effect until the plat has been signed by each of the following departments, person or offices:

- a) Chairman or Vice-Chairman of the Board of County Commissioners of St. Johns County, Florida;
- b) Office of the County Attorney;
- c) County Planning and Zoning Department;
- d) Office of the County Surveyor; and
- e) Clerk of Courts.


The Clerk shall not sign or accept the Plat for recording until it has been signed by each of the above persons or entities described in a) through d) above. If the plat is not signed and accepted by the Clerk for recording within 14 days from the date hereof, then the above-described conditional approval shall automatically terminate. If the plat is signed by the Clerk on or before such time, the conditions described herein shall be deemed to have been met.

ADOPTED by the Board of County Commissioners of St. Johns County, Florida, this 30th day of October, 2007.

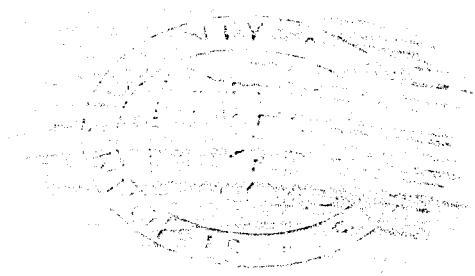
**BOARD OF COUNTY COMMISSIONERS  
OF ST. JOHNS COUNTY, FLORIDA**

BY:   
Ben Rich, Chairman

ATTEST: Cheryl Strickland

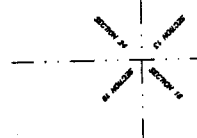
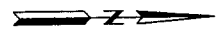
  
Deputy Clerk

RENDITION DATE 11/2/07

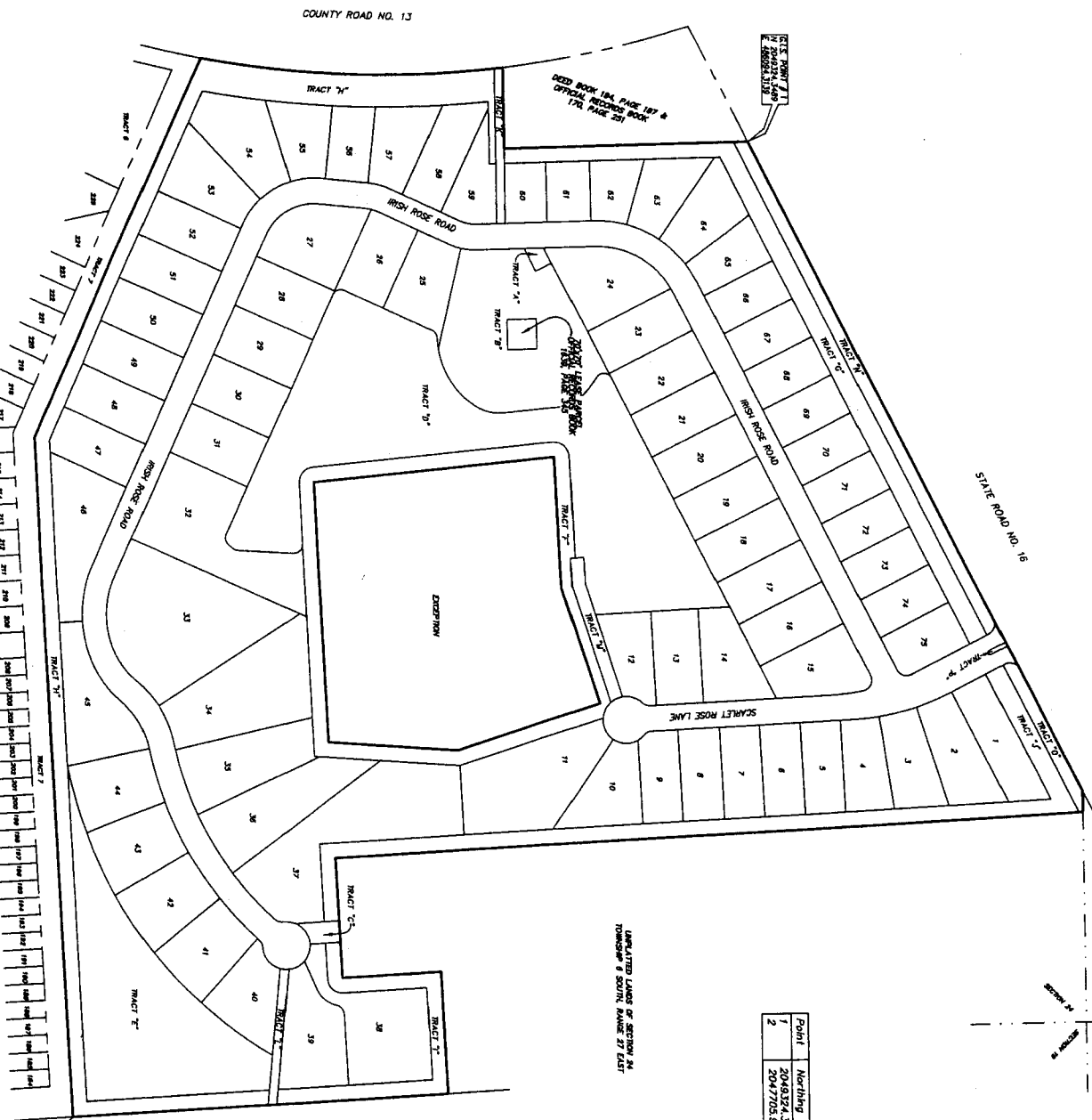


Being a portion of Section 24, Township 6 South, Range 27 East, Together with a part of Section 19, Township 6 South, Range 28 East, St. Johns County, Florida.

# ASHLEY OAKS



Point	Northing	Easting	Description
1	2048324.3489	486094.3139	PM - NW Corner Tract "A"
2	2047705.9861	488142.8306	PM - SE Corner of Tract "A"



SCALE: 1" = 200'

PREPARED BY:  
**RICHARD A. MILLER & ASSOCIATES**  
 PROFESSIONAL LAND SURVEYORS  
 6701 BEACH BLVD., SUITE #200  
 JACKSONVILLE, FLORIDA 32216  
 FAX (904) 721-5758