

RESOLUTION NO. 2009- 223
RESOLUTION OF THE BOARD OF COUNTY
COMMISSIONERS OF ST. JOHNS COUNTY, FLORIDA
APPROVING A PLAT FOR CROSS TOWN DRIVE

WHEREAS, TOLOMATO COMMUNITY DEVELOPMENT DISTRICT, AS OWNER, has applied to the Board of County Commissioners of St. Johns County, Florida for approval to record a plat known as CROSS TOWN DRIVE.

NOW, THEREFORE BE IT RESOLVED BY THE BOARD OF COUNTY COMMISSIONERS OF ST. JOHNS COUNTY, FLORIDA, as follows:

Section 1. The above-described subdivision plat and its dedicated areas depicted thereon are conditionally approved and accepted by the Board of County Commissioners of St. Johns County, Florida subject to Sections 2, 3, 4, 5 and 6.

Section 2. No Construction Bond will be required.

Section 3. A Maintenance Bond in the amount of \$316,273.50 has been filed with the Clerk's office.

Section 4. The approval and acceptance described in Section 1 shall not take effect until the Clerk has received a title opinion, certificate, or policy pertaining to the real property that is the subject of the a forenamed subdivision plat which opinion, certificate or policy is in a form acceptable to the County Attorney or Assistant County Attorney.

Section 5. The Clerk is instructed to file and record the consent and joinder (s) to the plat executed by all mortgages identified in the title opinion or certificate of the title in Section 4.

Section 6. The approval and acceptance described in Section 1 shall not take effect until the plat has been signed by each of the following departments, person or offices:

- a) Chairman or Vice-Chairman of the Board of County Commissioners of St. Johns County, Florida;
- b) Office of the County Attorney;
- c) County Growth Management Department;
- d) Office of the County Surveyor; and
- e) Clerk of Courts.

The Clerk shall not sign or accept the Plat for recording until it has been signed by each of the above persons or entities described in a) through d) above. If the plat is not signed and accepted by the Clerk for recording within 14 days from the date hereof, then the above-described conditional approval shall automatically terminate. If the plat is signed by the Clerk on or before such time, the conditions described herein shall be deemed to have been met.

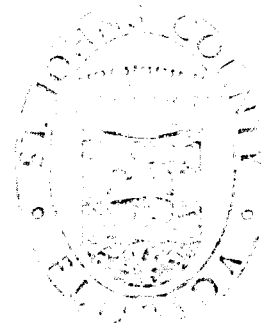
ADOPTED by the Board of County Commissioners of St. Johns County, Florida, this 18th day of August, 2009.

BOARD OF COUNTY COMMISSIONERS
OF ST. JOHNS COUNTY, FLORIDA

BY: Ron Sanchez
Ron Sanchez, Vice Chair

ATTEST: Cheryl Strickland

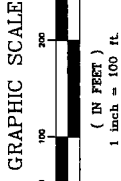
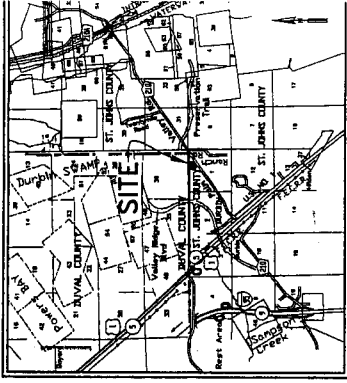
Pam Halterman
Deputy Clerk



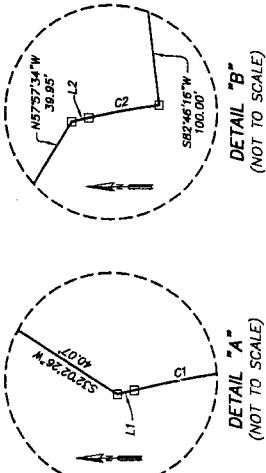
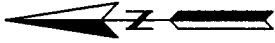
RENDITION DATE 8/20/09

Attachment 2
PLAT MAP

A PORTION OF SECTION 1, TOWNSHIP 5 SOUTH, RANGE 28 EAST, ST. JOHNS COUNTY, FLORIDA.

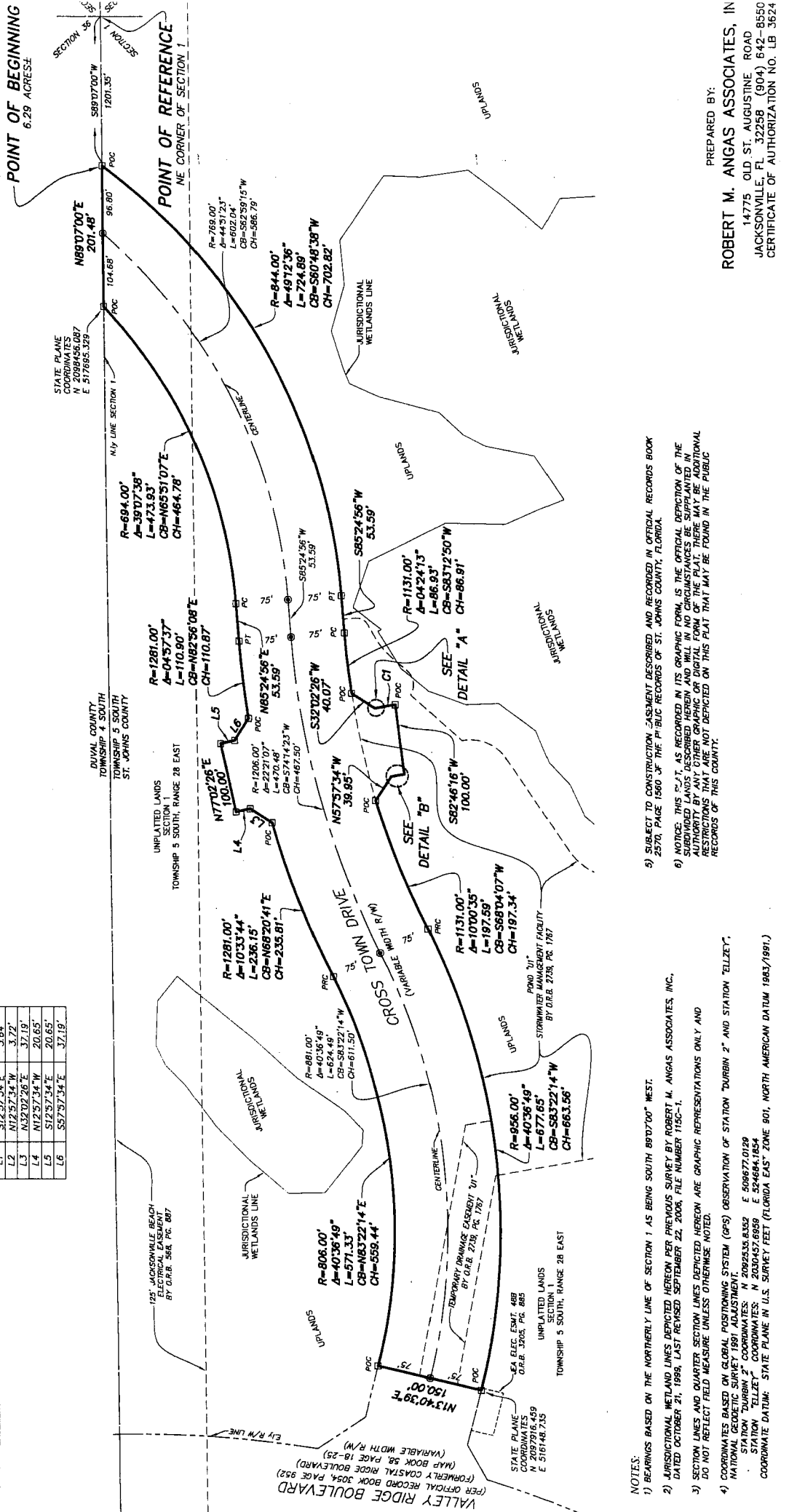


CURVE	CENTRAL ANGLE	RADIUS	LENGTH	BEARING	CHORD
C1	05°43'49"	250.00'	25.00'	S10°05'39"W	24.99'
C2	05°43'49"	150.00'	15.00'	N10°09'39"W	15.00'



LINE	BEARING	DISTANCE
L1	S12°57'34"E	3.64'
L2	N12°57'34"W	3.72'
L3	N32°02'26"E	37.19'
L4	N12°57'34"W	20.65'
L5	S12°57'34"E	20.65'
L6	S57°37'34"E	37.19'

- LEGEND:**
- R/W RIGHT OF WAY
 - O.R.B. OFFICIAL RECORD BOOK
 - P.C. POINT OF CURVE
 - P.T. POINT OF TANGENCY
 - L ARC LENGTH
 - CB CHORD BEARING
 - CH CHORD DISTANCE
 - PC PERMANENT CONTROL POINT
 - PRM PERMANENT REFERENCE MONUMENT
 - PC POINT OF CURVE
 - PT POINT OF TANGENCY
 - PC PERMANENT CONTROL POINT
 - PC PERMANENT CONTROL POINT
 - PC PERMANENT CONTROL POINT
 - ELEC. ELECTRIC
 - ESMT. EASEMENT



- NOTES:**
- 1) BEARINGS BASED ON THE NORTHERLY LINE OF SECTION 1 AS BEING SOUTH 89°07'00" WEST.
 - 2) JURISDICTIONAL WETLAND LINES DEPICTED HEREON PER PREVIOUS SURVEY BY ROBERT M. ANGAS ASSOCIATES, INC., DATED OCTOBER 21, 1989, LAST REVISED SEPTEMBER 22, 2006, FILE NUMBER 115C-1.
 - 3) SECTION LINES AND QUARTER SECTION LINES DEPICTED HEREON ARE GRAPHIC REPRESENTATIONS ONLY AND DO NOT REFLECT FIELD MEASURE UNLESS OTHERWISE NOTED.
 - 4) COORDINATES BASED ON GLOBAL POSITIONING SYSTEM (GPS) OBSERVATION OF STATION "DURBIN 2" AND STATION "ELTZER". STATION "DURBIN 2" COORDINATES: N 200235.6352 E 506677.0129. STATION "ELTZER" COORDINATES: N 200457.6959 E 524664.1654. COORDINATE DATUM: STATE PLANE IN U.S. SURVEY FEET (FLORIDA EAST ZONE 901, NORTH AMERICAN DATUM 1983/1991).
 - 5) SUBJECT TO CONSTRUCTION, EASEMENT RECORDED AND RECORDED IN OFFICIAL RECORDS BOOK 2570, PAGE 1566 OF THE PUBLIC RECORDS OF ST. JOHNS COUNTY, FLORIDA.
 - 6) NOTICE: THIS "P.L.T." AS RECORDED IN ITS GRAPHIC FORM, IS THE OFFICIAL DEPICTION OF THE SUBDIVIDED LANDS DESCRIBED HEREIN AND WILL IN NO CIRCUMSTANCES BE SUPPLIED IN ANY OTHER GRAPHIC OR DIGITAL FORM. THERE MAY BE ADDITIONAL RESTRICTIONS THAT ARE NOT DEPICTED ON THIS PLAT THAT MAY BE FOUND IN THE PUBLIC RECORDS OF THIS COUNTY.

PREPARED BY:
ROBERT M. ANGAS ASSOCIATES, IN
 14775 OLD ST. AUGUSTINE ROAD
 JACKSONVILLE, FL 32258 (904) 642-8550
 CERTIFICATE OF AUTHORIZATION NO. LB 3624