

RESOLUTION NO. 2009-32
RESOLUTION OF THE BOARD OF COUNTY
COMMISSIONERS OF ST. JOHNS COUNTY, FLORIDA
APPROVING A SUBDIVISION PLAT FOR CHARLES ESTATES

WHEREAS, READ VENTURES, INC., AS OWNER, has applied to the Board of County Commissioners of St. Johns County, Florida for approval to record a subdivision plat known as CHARLES ESTATE.

NOW, THEREFORE BE IT RESOLVED BY THE BOARD OF COUNTY COMMISSIONERS OF ST. JOHNS COUNTY, FLORIDA, as follows:

Section 1. The above-described subdivision plat and its dedicated areas depicted thereon are conditionally approved and accepted by the Board of County Commissioners of St. Johns County, Florida subject to Sections 2, 3, 4, 5 and 6.

Section 2. No Construction Bond will be required.

Section 3. No Maintenance Bond will be required.

Section 4. The approval and acceptance described in Section 1 shall not take effect until the Clerk has received a title opinion, certificate, or policy pertaining to the real property that is the subject of the a forenamed subdivision plat which opinion, certificate or policy is in a form acceptable to the County Attorney or Assistant County Attorney.

Section 5. The Clerk is instructed to file and record the consent and joinder (s) to the plat executed by all mortgages identified in the title opinion or certificate of the title in Section 4.

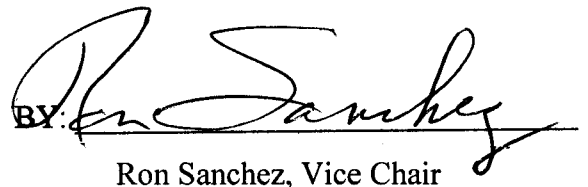
Section 6. The approval and acceptance described in Section 1 shall not take effect until the plat has been signed by each of the following departments, person or offices:

- a) Chairman or Vice-Chairman of the Board of County Commissioners of St. Johns County, Florida;
- b) Office of the County Attorney;
- c) County Planning and Zoning Department;
- d) Office of the County Surveyor; and
- e) Clerk of Courts.

The Clerk shall not sign or accept the Plat for recording until it has been signed by each of the above persons or entities described in a) through d) above. If the plat is not signed and accepted by the Clerk for recording within 14 days from the date hereof, then the above-described conditional approval shall automatically terminate. If the plat is signed by the Clerk on or before such time, the conditions described herein shall be deemed to have been met.

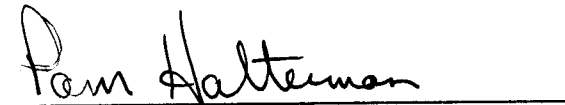
ADOPTED by the Board of County Commissioners of St. Johns County, Florida, this 17th day of February, 2009.

BOARD OF COUNTY COMMISSIONERS
OF ST. JOHNS COUNTY, FLORIDA

BY: 
Ron Sanchez, Vice Chair

RENDITION DATE 2/18/09

ATTEST: Cheryl Strickland


Deputy Clerk



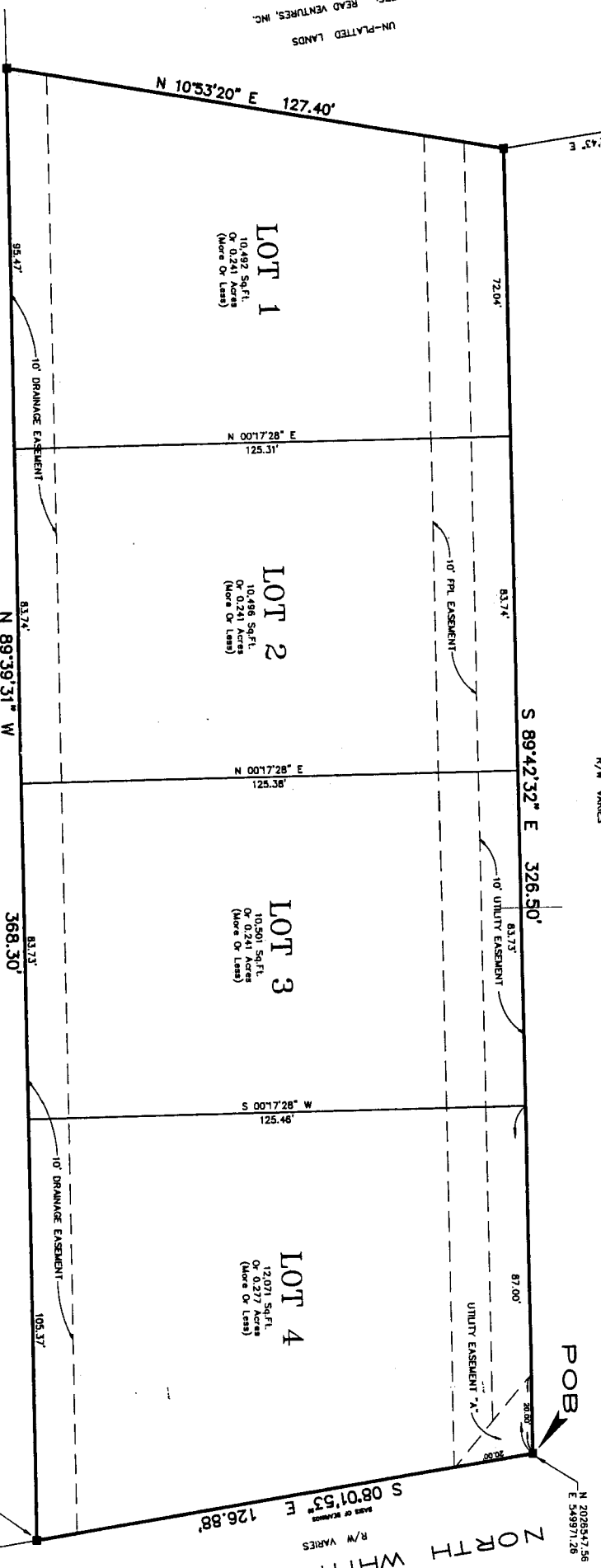
CHARLES ESTATES
 A PARCEL OF LAND SITUATED IN SECTION 12,
 TOWNSHIP 7 SOUTH, RANGE 29 EAST, ST. JOHNS COUNTY, FLORIDA.

OFFICIAL RECORDS BOOK 2214, PAGE 1289

DOETTLER AVENUE

PALM PARK SUBDIVISION
 MAP BOOK 1, PAGE 117

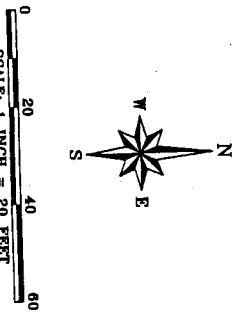
CHARLES STREET
 R/W VARIES



NOTE
 THE BASIS OF BEARING AS SHOWN HEREON IS THE WEST RIGHT-OF-WAY LINE
 OF NORTH WHITNEY STREET WHOSE ASSUMED BEARING BEARS S 08°01'33" E.

COORDINATES SHOWN HEREON ARE REFERENCED TO THE NORTH AMERICAN
 DATUM OF 1983, UNITED STATES FEET - FLORIDA ZONE EAST.

LEGEND
 C1 CURVE TABLE IDENTIFICATION NUMBER
 R/W RIGHT OF WAY
 (NR) NON-RADIAL
 BR/L BUILDING RESTRICTION LINE
 PC POINT OF BEGINNING
 PL POINT OF TANGENCY
 PLS LICENSED BUSINESS
 SF/L SQUARE FEET
 FLORIDA POWER AND LIGHT COMPANY
 PERMANENT CONTROL POINT # 7111
 SET NAIL REFERENCE MONUMENT
 SET "X" X" CONCRETE MONUMENT - LB # 7111



OFFICIAL RECORDS BOOK 524, PAGE 148
 UN-PLATTED LANDS

PLAT PREPARED BY:
ANCIENT CITY SURVEYING
ACCS
 SURVEYORS - ENGINEERS
 4428 U.S. HIGHWAY No. 1 SOUTH - SU1
 ST. AUGUSTINE, FLORIDA 32086
 PHONE: 904-787-9887 FAX: 904-787-7877