

RESOLUTION NO. 2010- 292  
RESOLUTION OF THE BOARD OF COUNTY  
COMMISSIONERS OF ST. JOHNS COUNTY, FLORIDA  
APPROVING A PLAT FOR CROSSINGS AT CYPRESS TRACE

WHEREAS, POZ CAPITAL INVESTMENTS, INC., A FLORIDA CORPORATION, AND THE CROSSINGS AT CYPRESS TRACE CONDOMINIUM ASSOCIATION, INC., A FLORIDA NOT FOR PROFIT CORPORATION, AS OWNERS, have applied to the Board of County Commissioners of St. Johns County, Florida for approval to record a plat known as CROSSINGS AT CYPRESS TRACE.

NOW, THEREFORE BE IT RESOLVED BY THE BOARD OF COUNTY COMMISSIONERS OF ST. JOHNS COUNTY, FLORIDA, as follows:

Section 1. The above-described subdivision plat and its dedicated areas depicted thereon are conditionally approved and accepted by the Board of County Commissioners of St. Johns County, Florida subject to Sections 2, 3, 4, 5 and 6.

Section 2. No Required Improvements Bond, (for construction), will be required.

Section 3. No Required Improvements Bond, (for maintenance), will be required.

Section 4. The approval and acceptance described in Section 1 shall not take effect until the Clerk has received a title opinion, certificate, or policy pertaining to the real property that is the subject of the a forenamed subdivision plat which opinion, certificate or policy is in a form acceptable to the County Attorney or Assistant County Attorney.

Section 5. The Clerk is instructed to file and record the consent and joinder (s) to the plat executed by all mortgages identified in the title opinion or certificate of the title in Section 4.

Section 6. The approval and acceptance described in Section 1 shall not take effect until the plat has been signed by each of the following departments, person or offices:

- a) Chairman or Vice-Chairman of the Board of County Commissioners of St. Johns County, Florida;
- b) Office of the County Attorney;
- c) County Growth Management Department;
- d) Office of the County Surveyor; and
- e) Clerk of Courts.

The Clerk shall not sign or accept the Plat for recording until it has been signed by each of the above persons or entities described in a) through d) above. If the plat is not signed and accepted by the Clerk for recording within 14 days from the date hereof, then the above-described conditional approval shall automatically terminate. If the plat is signed by the Clerk on or before such time, the conditions described herein shall be deemed to have been met.

ADOPTED by the Board of County Commissioners of St. Johns County, Florida, this 21 day of December, 2010.

BOARD OF COUNTY COMMISSIONERS  
OF ST. JOHNS COUNTY, FLORIDA

BY: \_\_\_\_\_

Chair

ATTEST: Cheryl Strickland

Pam Halterman

Deputy Clerk

RENDITION DATE 12/28/10

# Attachment 2

## Plat Map

# CROSSINGS AT CYPRESS TRACE

PART OF SECTIONS 3 AND 4, TOWNSHIP 6 SOUTH, RANGE 28 EAST, ST. JOHNS COUNTY, FLORIDA

MAP BOOK \_\_\_\_\_ PAGE \_\_\_\_\_  
SHEET 1 OF 8 SHEETS

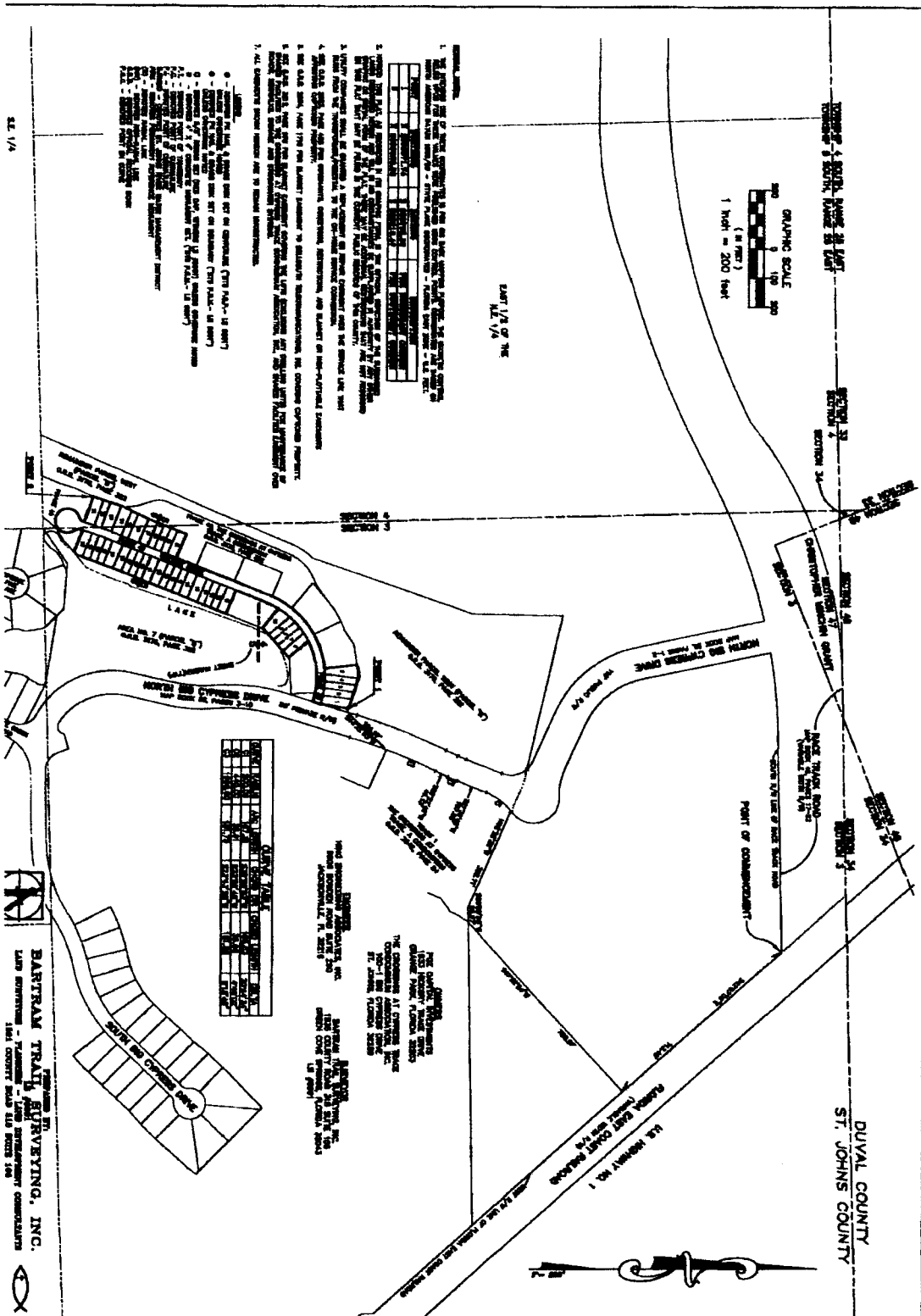
DIVAL COUNTY  
ST. JOHNS COUNTY



DATE 1/24 OF THE  
18/1/18

1. THE SURVEY OF THIS PROPERTY WAS MADE BY THE SURVEYOR, JOHN W. BARTHAM, JR., IN 1918, AND WAS RECORDED IN THE PUBLIC RECORDS OF ST. JOHNS COUNTY, FLORIDA, IN 1919.
2. THIS SURVEY WAS MADE IN ACCORDANCE WITH THE ACTS OF THE LEGISLATURE OF THE STATE OF FLORIDA, AND THE RULES AND REGULATIONS OF THE SURVEYOR GENERAL OF THE STATE OF FLORIDA.
3. THE SURVEY WAS MADE BY THE SURVEYOR, JOHN W. BARTHAM, JR., IN 1918, AND WAS RECORDED IN THE PUBLIC RECORDS OF ST. JOHNS COUNTY, FLORIDA, IN 1919.
4. THE SURVEY WAS MADE IN ACCORDANCE WITH THE ACTS OF THE LEGISLATURE OF THE STATE OF FLORIDA, AND THE RULES AND REGULATIONS OF THE SURVEYOR GENERAL OF THE STATE OF FLORIDA.
5. THE SURVEY WAS MADE BY THE SURVEYOR, JOHN W. BARTHAM, JR., IN 1918, AND WAS RECORDED IN THE PUBLIC RECORDS OF ST. JOHNS COUNTY, FLORIDA, IN 1919.
6. THIS SURVEY WAS MADE IN ACCORDANCE WITH THE ACTS OF THE LEGISLATURE OF THE STATE OF FLORIDA, AND THE RULES AND REGULATIONS OF THE SURVEYOR GENERAL OF THE STATE OF FLORIDA.
7. ALL CORNERS AND POINTS SHOWN ON THIS SURVEY ARE TO BE CONSIDERED AS CORNERS AND POINTS OF THE ORIGINAL SURVEY.

1. THE SURVEY OF THIS PROPERTY WAS MADE BY THE SURVEYOR, JOHN W. BARTHAM, JR., IN 1918, AND WAS RECORDED IN THE PUBLIC RECORDS OF ST. JOHNS COUNTY, FLORIDA, IN 1919.
2. THIS SURVEY WAS MADE IN ACCORDANCE WITH THE ACTS OF THE LEGISLATURE OF THE STATE OF FLORIDA, AND THE RULES AND REGULATIONS OF THE SURVEYOR GENERAL OF THE STATE OF FLORIDA.
3. THE SURVEY WAS MADE BY THE SURVEYOR, JOHN W. BARTHAM, JR., IN 1918, AND WAS RECORDED IN THE PUBLIC RECORDS OF ST. JOHNS COUNTY, FLORIDA, IN 1919.
4. THE SURVEY WAS MADE IN ACCORDANCE WITH THE ACTS OF THE LEGISLATURE OF THE STATE OF FLORIDA, AND THE RULES AND REGULATIONS OF THE SURVEYOR GENERAL OF THE STATE OF FLORIDA.
5. THE SURVEY WAS MADE BY THE SURVEYOR, JOHN W. BARTHAM, JR., IN 1918, AND WAS RECORDED IN THE PUBLIC RECORDS OF ST. JOHNS COUNTY, FLORIDA, IN 1919.
6. THIS SURVEY WAS MADE IN ACCORDANCE WITH THE ACTS OF THE LEGISLATURE OF THE STATE OF FLORIDA, AND THE RULES AND REGULATIONS OF THE SURVEYOR GENERAL OF THE STATE OF FLORIDA.
7. ALL CORNERS AND POINTS SHOWN ON THIS SURVEY ARE TO BE CONSIDERED AS CORNERS AND POINTS OF THE ORIGINAL SURVEY.



SECTION	TOWNSHIP	RANGE	COUNTY	STATE
3	6	28	ST. JOHNS	FLORIDA
4	6	28	ST. JOHNS	FLORIDA

THE SURVEY OF THIS PROPERTY WAS MADE BY THE SURVEYOR, JOHN W. BARTHAM, JR., IN 1918, AND WAS RECORDED IN THE PUBLIC RECORDS OF ST. JOHNS COUNTY, FLORIDA, IN 1919.

**BARTHAM TRAIL SURVEYING, INC.**  
1840 COUNTY ROAD 118, SUITE 200  
ST. JOHNS COUNTY, FLORIDA 32058

