

RESOLUTION NO. 2010- 77

A RESOLUTION OF THE BOARD OF COUNTY COMMISSIONERS OF ST. JOHNS COUNTY, FLORIDA, AUTHORIZING A PARTIAL RELEASE OF A UTILITY EASEMENT FOR AN AREA DESIGNATED AS CONSERVATION WITHIN THE COMMON AREAS OF GRAND RAVINE CONDOMINIUM AND AUTHORIZING THE COUNTY ADMINISTRATOR, OR DESIGNEE, TO EXECUTE THE PARTIAL RELEASE OF EASEMENT.

WHEREAS, St. Johns River Water Management District (“SJRWMD”) has requested a Partial Release of Easement, attached hereto as Exhibit “A” incorporated by reference and made a part hereof, for a County Utility Easement area; and

WHEREAS, the developer of Grand Ravine condominium granted a utility easement to St. Johns County that covers the entire condominium property. SJRWMD requires that certain areas within the common areas of the condominium property be released from the utility easement because these certain areas will be designated conservation and a conservation easement will be granted to SJRWMD; and

WHEREAS, the Utility Division has agreed to release their interest as shown on the memo attached hereto as Exhibit “B” incorporated by reference and made a part hereof; and

WHEREAS, to the extent that there are typographical, scriveners or administrative errors that do not change the tone, tenor, or concept of this Resolution, then this Resolution may be revised without subsequent approval by the Board of County Commissioners.

NOW, THEREFORE BE IT RESOLVED BY THE BOARD OF COUNTY COMMISSIONERS OF ST. JOHNS COUNTY, FLORIDA, as follows:

Section 1. The above recitals are incorporated by reference into the body of this Resolution and such recitals are adopted as findings of fact.

Section 2. The Partial Release of Easement is hereby accepted by the Board of County Commissioners and the County Administrator, or designee, is hereby authorized to execute said deed.

Section 3. The Clerk of Circuit Court is instructed to record the Partial Release of Easement in the Official Records of St. Johns County, Florida.

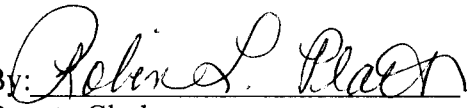
PASSED AND ADOPTED, this 6th day of April, 2010.

**BOARD OF COUNTY COMMISSIONERS
ST. JOHNS COUNTY, FLORIDA.**

BY: 
Ron Sanchez, Chair

ATTEST: Cheryl Strickland, Clerk

RENDITION DATE 4/7/2010

By: 
Deputy Clerk

PREPARED BY AND RETURN TO:

Nanette Bradbury
St. Johns County Land Management Systems Department
Real Estate Division
500 San Sebastian View
St. Augustine FL 32084

For Recording Purposes Only

PARTIAL RELEASE OF EASEMENT
(St Johns County, Florida)

KNOW ALL MEN BY THESE PRESENTS, that as of this ____ day of _____, 2010:

WHEREAS, DSM, LLC, A FLORIDA LIMITED LIABILITY COMPANY, (hereafter "**DSM**"), was the Grantor of that certain Easement granted to **ST JOHNS COUNTY, FLORIDA, a political subdivision of the State of Florida, whose address is 500 San Sebastian View, St. Augustine FL 32084** (hereafter "**St Johns County**"), recorded in Official Records Book 3144, Page 1019, of the Public Records of St. Johns County, Florida, which Easement is over the entire parcel owned by **DSM**, and is more particularly described in the Easement (hereafter the "**PROPERTY**").

WHEREAS, ST JOHNS COUNTY has been requested by **DSM** to release a portion of its Easement over the Property that lies within the lands proposed for Conservation Easement in favor of **ST. JOHNS RIVER WATER MANAGEMENT DISTRICT** (hereafter "**CONSERVATION EASEMENT**"), and **ST JOHNS COUNTY** is willing to release those lands from its Easement;

NOW, THEREFORE, WITNESSETH, That **ST JOHNS COUNTY**, for and in consideration of the sum of One Dollar and of other good and valuable considerations, receipt of which is hereby acknowledged, has released and discharged and by these presents does release and discharge all of the right, title, interest, claim and demand which **ST JOHNS COUNTY** has under and by virtue of its above-described Easement, as to those lands more particularly described in the attached Exhibit A; provided however, that portion of the Easement not lying within the lands described in the attached Exhibit A which are not released herein shall remain in full force and effect.

[Signatures to Follow]

IN WITNESS WHEREOF, this Partial Release was executed this first day as written above.

Signed, sealed and delivered
in the presence of:

**ST JOHNS COUNTY, a political
subdivision of the State of Florida**

By: _____
Michael D. Wanchick
County Administrator

Print Name: _____

Print Name: _____

STATE OF FLORIDA
COUNTY OF ST. JOHNS

The foregoing instrument was acknowledged before me this ____ day of _____, 2010, by Michael D. Wanchick, as County Administrator of St. Johns County, on behalf of the County. He/She did not take an oath and: *(notary must check applicable box)*

- is personally known to me.
- produced a current _____ driver's license as identification.
- produced _____ as identification.

{Notary Seal must be affixed}

Signature of Notary

Name of Notary (Typed, Printed or Stamped)

Commission Number (if not legible on seal): _____

My Commission Expires (if not legible on seal): _____



CLARSON & ASSOCIATES, INC.
PROFESSIONAL SURVEYORS AND MAPPERS
1643 NALDO AVENUE
JACKSONVILLE, FLORIDA 32207

PHONE: 396-2623
FAX: 396-2633

AUGUST 20, 2007

GRAND RAVINE, ST. JOHNS COUNTY, FLORIDA

CONSERVATION EASEMENT 1

A PART OF GOVERNMENT LOT 12, SECTION 19, TOWNSHIP 8 SOUTH, RANGE 30 EAST, ST. JOHNS COUNTY, FLORIDA, BEING MORE PARTICULARLY DESCRIBED AS FOLLOWS:

FOR A POINT OF REFERENCE COMMENCE AT THE INTERSECTION OF THE NORTHERLY RIGHT OF WAY LINE OF ROEHRS ROAD (A 60 FOOT RIGHT OF WAY) WITH THE EASTERLY RIGHT OF WAY LINE OF U.S. HIGHWAY NO. 1 (A 200 FOOT RIGHT OF WAY) AND RUN NORTH 08° 33' 14" WEST, ALONG SAID EASTERLY RIGHT OF WAY LINE OF U.S. HIGHWAY NO. 1, A DISTANCE OF 661.94 FEET; THENCE NORTH 75° 33' 25" EAST, A DISTANCE OF 20.11 FEET TO THE POINT OF BEGINNING.

FROM THE POINT OF BEGINNING THUS DESCRIBED CONTINUE NORTH 75° 33' 25" EAST, A DISTANCE OF 59.13 FEET; THENCE SOUTH 38° 55' 25" EAST, A DISTANCE OF 45.32 FEET; THENCE SOUTH 32° 43' 09" EAST, A DISTANCE OF 113.06 FEET; THENCE SOUTH 34° 29' 16" EAST, A DISTANCE OF 141.88 FEET; THENCE SOUTH 17° 57' 23" EAST, A DISTANCE OF 47.66 FEET; THENCE SOUTH 41° 18' 00" EAST, A DISTANCE OF 53.22 FEET; THENCE SOUTH 31° 36' 00" EAST, A DISTANCE OF 99.01 FEET; THENCE SOUTH 24° 53' 31" EAST, A DISTANCE OF 87.50 FEET; THENCE SOUTH 31° 53' 42" EAST, A DISTANCE OF 38.56 FEET; THENCE SOUTH 41° 35' 43" EAST, A DISTANCE OF 52.16 FEET; THENCE SOUTH 54° 18' 55" EAST, A DISTANCE OF 59.52 FEET; THENCE SOUTH 40° 41' 46" EAST, A DISTANCE OF 54.93 FEET; THENCE SOUTH 88° 40' 10" WEST, ALONG A LINE PARALLEL TO AND 20 FEET NORTHERLY OF SAID NORTHERLY RIGHT OF WAY LINE OF ROEHRS ROAD, AS MEASURED AT RIGHT ANGLES THERETO, A DISTANCE OF 408.83 FEET; THENCE NORTH 08° 33' 14" WEST, ALONG A LINE PARALLEL TO AND 20 FEET EASTERLY OF SAID EASTERLY RIGHT OF WAY LINE OF U.S. HIGHWAY NO. 1, A DISTANCE OF 646.38 FEET TO THE POINT OF BEGINNING.

CONTAINING 3.33 ACRES, MORE OR LESS.



CLARSON & ASSOCIATES, INC.
PROFESSIONAL SURVEYORS AND MAPPERS
1643 NALDO AVENUE
JACKSONVILLE, FLORIDA 32207

PHONE: 396-2623
FAX: 396-2633

AUGUST 20, 2007

GRAND RAVINE, ST. JOHNS COUNTY, FLORIDA

CONSERVATION EASEMENT 2

A PART OF GOVERNMENT LOT 12, SECTION 19, TOWNSHIP 8 SOUTH, RANGE 30 EAST, ST. JOHNS COUNTY, FLORIDA, BEING MORE PARTICULARLY DESCRIBED AS FOLLOWS:

FOR A POINT OF REFERENCE COMMENCE AT THE INTERSECTION OF THE NORTHERLY RIGHT OF WAY LINE OF ROEHRS ROAD (A 60 FOOT RIGHT OF WAY) WITH THE EASTERLY RIGHT OF WAY LINE OF U.S. HIGHWAY NO. 1 (A 200 FOOT RIGHT OF WAY) AND RUN NORTH 08° 33' 14" WEST, ALONG SAID EASTERLY RIGHT OF WAY LINE OF U.S. HIGHWAY NO. 1, A DISTANCE OF 699.54 FEET TO THE POINT OF BEGINNING.

FROM THE POINT OF BEGINNING THUS DESCRIBED CONTINUE NORTH 08° 33' 14" WEST, ALONG LAST SAID EASTERLY RIGHT OF WAY LINE, A DISTANCE OF 24.79 FEET; THENCE NORTH 81° 29' 58" EAST, A DISTANCE OF 29.48 FEET; THENCE SOUTH 08° 30' 02" EAST, A DISTANCE OF 26.50 FEET; THENCE SOUTH 84° 49' 17" WEST, A DISTANCE OF 29.51 FEET TO THE POINT OF BEGINNING.

CONTAINING 0.02 ACRES, MORE OR LESS.



CLARSON & ASSOCIATES, INC.
PROFESSIONAL SURVEYORS AND MAPPERS
1643 NALDO AVENUE
JACKSONVILLE, FLORIDA 32207

PHONE: 396-2623
FAX: 396-2633

AUGUST 20, 2007

GRAND RAVINE, ST. JOHNS COUNTY, FLORIDA

CONSERVATION EASEMENT 3

A PART OF GOVERNMENT LOT 12, SECTION 19, TOWNSHIP 8 SOUTH, RANGE 30 EAST, ST. JOHNS COUNTY, FLORIDA, BEING MORE PARTICULARLY DESCRIBED AS FOLLOWS:

FOR A POINT OF REFERENCE COMMENCE AT THE INTERSECTION OF THE NORTHERLY RIGHT OF WAY LINE OF ROEHRS ROAD (A 60 FOOT RIGHT OF WAY) WITH THE EASTERLY RIGHT OF WAY LINE OF U.S. HIGHWAY NO. 1 (A 200 FOOT RIGHT OF WAY) AND RUN NORTH 08° 33' 14" WEST, ALONG SAID EASTERLY RIGHT OF WAY LINE OF U.S. HIGHWAY NO. 1, A DISTANCE OF 724.33 FEET; THENCE NORTH 81° 29' 58" EAST, A DISTANCE OF 39.48 FEET TO THE POINT OF BEGINNING.

FROM THE POINT OF BEGINNING THUS DESCRIBED CONTINUE NORTH 81° 29' 58" EAST, A DISTANCE OF 16.76 FEET; THENCE NORTH 00° 22' 18" WEST, A DISTANCE OF 16.26 FEET; THENCE NORTH 89° 37' 42" EAST, A DISTANCE OF 48.10 FEET; THENCE SOUTH 00° 15' 30" WEST, A DISTANCE OF 20.20 FEET; THENCE SOUTH 31° 26' 24" WEST, A DISTANCE OF 25.28 FEET; THENCE SOUTH 85° 10' 25" WEST, A DISTANCE OF 47.47 FEET; THENCE NORTH 08° 30' 02" WEST, A DISTANCE OF 27.01 FEET TO THE POINT OF BEGINNING.

CONTAINING 0.05 ACRES, MORE OR LESS.



CLARSON & ASSOCIATES, INC.
PROFESSIONAL SURVEYORS AND MAPPERS
1643 NALDO AVENUE
JACKSONVILLE, FLORIDA 32207

PHONE: 396-2623
FAX: 396-2633

AUGUST 20, 2007

GRAND RAVINE, ST. JOHNS COUNTY, FLORIDA

CONSERVATION EASEMENT 4

A PART OF GOVERNMENT LOT 12, SECTION 19, TOWNSHIP 8 SOUTH, RANGE 30 EAST, ST. JOHNS COUNTY, FLORIDA, BEING MORE PARTICULARLY DESCRIBED AS FOLLOWS:

FOR A POINT OF REFERENCE COMMENCE AT THE INTERSECTION OF THE NORTHERLY RIGHT OF WAY LINE OF ROEHRS ROAD (A 60 FOOT RIGHT OF WAY) WITH THE EASTERLY RIGHT OF WAY LINE OF U.S. HIGHWAY NO. 1 (A 200 FOOT RIGHT OF WAY) AND RUN NORTH 08° 33' 14" WEST, ALONG SAID EASTERLY RIGHT OF WAY LINE OF U.S. HIGHWAY NO. 1, A DISTANCE OF 1,297.24 FEET TO A POINT ON THE NORTHERLY LINE OF SAID GOVERNMENT LOT 12, SECTION 19, TOWNSHIP 8 SOUTH, RANGE 30 EAST (ALSO BEING THE SOUTHERLY LINE OF GOVERNMENT LOT 7, SAID SECTION 19 AS SHOWN ON THE PLAT OF REPLAT OF ST. AUGUSTINE SHORES UNIT TWO, ACCORDING TO MAP BOOK 13, PAGES 114 THROUGH 124 OF THE PUBLIC RECORDS OF SAID COUNTY); THENCE NORTH 89° 22' 40" EAST, ALONG SAID NORTHERLY LINE OF GOVERNMENT LOT 12, SECTION 19, A DISTANCE OF 325.26 FEET TO THE POINT OF BEGINNING.

FROM THE POINT OF BEGINNING THUS DESCRIBED CONTINUE NORTH 89° 22' 40" EAST, ALONG SAID NORTHERLY LINE, A DISTANCE OF 21.21 FEET; THENCE SOUTH 00° 00' 10" WEST, A DISTANCE OF 39.41 FEET; THENCE SOUTH 02° 28' 02" WEST, A DISTANCE OF 91.45 FEET; THENCE SOUTH 02° 49' 47" WEST, A DISTANCE OF 71.69 FEET; THENCE SOUTH 07° 29' 37" WEST, A DISTANCE OF 40.06 FEET; THENCE SOUTH 15° 47' 33" EAST, A DISTANCE OF 71.83 FEET; THENCE SOUTH 44° 55' 28" EAST, A DISTANCE OF 54.52 FEET; THENCE SOUTH 20° 00' 10" WEST, A DISTANCE OF 58.17 FEET; THENCE SOUTH 50° 20' 43" WEST, A DISTANCE OF 56.91 FEET; THENCE NORTH 00° 41' 39" WEST, A DISTANCE OF 170.94 FEET; THENCE NORTH 15° 47' 33" WEST, A DISTANCE OF 17.30 FEET; THENCE NORTH 00° 41' 39" WEST, A DISTANCE OF 28.88 FEET; THENCE NORTH 07° 29' 37" EAST, A DISTANCE OF 23.52 FEET; THENCE NORTH 02° 49' 47" EAST, A DISTANCE OF 59.39 FEET; THENCE NORTH 00° 41' 39" WEST, A DISTANCE OF 141.49 FEET TO THE POINT OF BEGINNING.

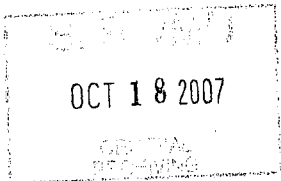
CONTAINING 0.25 ACRES, MORE OR LESS.



CLARSON & ASSOCIATES, INC.
PROFESSIONAL SURVEYORS AND MAPPERS
1643 NALDO AVENUE
JACKSONVILLE, FLORIDA 32207

PHONE: 396-2623
FAX: 396-2633

AUGUST 20, 2007
REVISED OCTOBER 5, 2007



GRAND RAVINE, ST. JOHNS COUNTY, FLORIDA

CONSERVATION EASEMENT 5

A PART OF GOVERNMENT LOT 12, SECTION 19, TOWNSHIP 8 SOUTH, RANGE 30 EAST, ST. JOHNS COUNTY, FLORIDA, BEING MORE PARTICULARLY DESCRIBED AS FOLLOWS:

FOR A POINT OF REFERENCE COMMENCE AT THE INTERSECTION OF THE NORTHERLY RIGHT OF WAY LINE OF ROEHRS ROAD (A 60 FOOT RIGHT OF WAY) WITH THE EASTERLY RIGHT OF WAY LINE OF U.S. HIGHWAY NO. 1 (A 200 FOOT RIGHT OF WAY) AND RUN NORTH 88°40'10" EAST, ALONG SAID NORTHERLY RIGHT OF WAY LINE OF ROEHRS ROAD, A DISTANCE OF 1,069.30 FEET TO A POINT ON THE EASTERLY LINE OF SAID GOVERNMENT LOT 12, SECTION 19 (ALSO BEING THE WESTERLY LINE OF GOVERNMENT LOT 13, SAID SECTION 19 AS SHOWN ON THE PLAT OF ST. AUGUSTINE SHORES UNIT EIGHT, ACCORDING TO MAP BOOK 21, PAGE 58 THROUGH 63 OF THE PUBLIC RECORDS OF SAID COUNTY); THENCE NORTH 00° 22' 32" WEST, ALONG SAID EASTERLY LINE OF GOVERNMENT LOT 12, SECTION 19, A DISTANCE OF 1,271.62 FEET TO THE NORTHEASTERLY CORNER OF SAID GOVERNMENT LOT 12; THENCE SOUTH 89° 22' 40" WEST, ALONG THE NORTHERLY LINE OF SAID GOVERNMENT LOT 12 (ALSO BEING THE SOUTHERLY LINE OF GOVERNMENT LOT 7, SAID SECTION 19, AS SHOWN ON THE PLAT OF REPLAT OF ST. AUGUSTINE SHORES UNIT TWO, ACCORDING TO MAP BOOK 13, PAGES 114 THROUGH 124, OF THE PUBLIC RECORDS OF SAID COUNTY), A DISTANCE OF 329.56 FEET TO THE POINT OF BEGINNING.

FROM THE POINT OF BEGINNING THUS DESCRIBED RUN SOUTH 20° 48' 42" WEST, A DISTANCE OF 122.05 FEET; THENCE SOUTH 30° 31' 04" WEST, A DISTANCE OF 37.49 FEET; THENCE SOUTH 23° 05' 17" WEST, A DISTANCE OF 43.75 FEET; THENCE SOUTH 48° 04' 11" WEST, A DISTANCE OF 34.44 FEET; THENCE SOUTH 58° 12' 58" WEST, A DISTANCE OF 47.55 FEET; THENCE SOUTH 47° 00' 17" WEST, A DISTANCE OF 127.80 FEET; THENCE SOUTH 02° 14' 05" EAST, A DISTANCE OF 183.93 FEET; THENCE SOUTH 86° 06' 56" EAST, A DISTANCE OF 49.52 FEET; THENCE SOUTH 20° 12' 31" EAST, A DISTANCE OF 63.83 FEET; THENCE SOUTH 00° 44' 33" EAST, A DISTANCE OF 24.68 FEET; THENCE SOUTH 04° 42' 25" EAST, A DISTANCE OF 51.59 FEET; THENCE SOUTH 33° 37' 19" EAST, A DISTANCE OF 44.18 FEET; THENCE SOUTH 00° 44' 33" EAST, A DISTANCE

PAGE 1 OF 2

GRAND RAVINE CONSERVATION EASEMENT 5

AUGUST 20, 2007

PAGE 2 OF 2

OF 11.27 FEET; THENCE SOUTH 27° 08' 23" WEST, A DISTANCE OF 97.48 FEET; THENCE SOUTH 89° 39' 26" WEST, A DISTANCE OF 213.20 FEET; THENCE NORTH 18° 16' 14" WEST, A DISTANCE OF 144.92 FEET; THENCE NORTH 28° 08' 33" EAST, A DISTANCE OF 24.41 FEET; THENCE NORTH 32° 31' 14" WEST, A DISTANCE OF 90.83 FEET; THENCE NORTH 48° 39' 34" WEST, A DISTANCE OF 131.59 FEET; THENCE NORTH 50° 20' 43" EAST, A DISTANCE OF 41.95 FEET; THENCE SOUTH 50° 58' 33" EAST, A DISTANCE OF 54.31 FEET; THENCE SOUTH 73° 33' 40" EAST, A DISTANCE OF 51.87 FEET; THENCE SOUTH 81° 05' 22" EAST, A DISTANCE OF 76.85 FEET; THENCE SOUTH 07° 06' 13" EAST, A DISTANCE OF 38.08 FEET; THENCE SOUTH 04° 02' 08" WEST, A DISTANCE OF 14.44 FEET; THENCE SOUTH 26° 03' 18" WEST, A DISTANCE OF 51.63 FEET; THENCE SOUTH 28° 08' 33" WEST, A DISTANCE OF 61.48 FEET; THENCE SOUTH 29° 04' 44" EAST, A DISTANCE OF 67.67 FEET; THENCE SOUTH 00° 21' 12" EAST, A DISTANCE OF 44.00 FEET; THENCE NORTH 78° 27' 41" EAST, A DISTANCE OF 57.83 FEET; THENCE SOUTH 88° 18' 52" EAST, A DISTANCE OF 68.67 FEET; THENCE SOUTH 85° 26' 36" EAST, A DISTANCE OF 59.59 FEET; THENCE NORTH 44° 49' 36" EAST, A DISTANCE OF 80.13 FEET; THENCE NORTH 36° 10' 44" WEST, A DISTANCE OF 45.49 FEET; THENCE NORTH 00° 50' 12" WEST, A DISTANCE OF 68.58 FEET; THENCE NORTH 20° 12' 31" WEST, A DISTANCE OF 61.92 FEET; THENCE NORTH 86° 06' 56" WEST, A DISTANCE OF 116.05 FEET; THENCE NORTH 29° 25' 06" WEST, A DISTANCE OF 12.86 FEET; THENCE NORTH 84° 46' 17" WEST, A DISTANCE OF 6.20 FEET; THENCE NORTH 07° 47' 25" WEST, A DISTANCE OF 34.39 FEET; THENCE NORTH 36° 26' 20" EAST, A DISTANCE OF 34.77 FEET; THENCE NORTH 19° 24' 09" EAST, A DISTANCE OF 64.64 FEET; THENCE NORTH 26° 50' 23" EAST, A DISTANCE OF 44.68 FEET; THENCE NORTH 11° 46' 03" WEST, A DISTANCE OF 33.51 FEET; THENCE NORTH 18° 45' 59" WEST, A DISTANCE OF 28.63 FEET; THENCE NORTH 00° 18' 05" WEST, A DISTANCE OF 36.82 FEET; THENCE NORTH 35° 29' 14" EAST, A DISTANCE OF 30.50 FEET; THENCE NORTH 62° 24' 40" EAST, A DISTANCE OF 68.46 FEET; THENCE SOUTH 56° 31' 04" EAST, A DISTANCE OF 60.18 FEET; THENCE NORTH 58° 12' 58" EAST, A DISTANCE OF 51.69 FEET; THENCE NORTH 30° 06' 14" EAST, A DISTANCE OF 51.48 FEET; THENCE NORTH 30° 56' 54" EAST, A DISTANCE OF 49.53 FEET; THENCE NORTH 06° 00' 40" WEST, A DISTANCE OF 38.39 FEET; THENCE NORTH 51° 18' 41" EAST, A DISTANCE OF 39.48 FEET; THENCE NORTH 00° 37' 20" WEST, A DISTANCE OF 43.28 FEET TO A POINT ON THE PREVIOUSLY MENTIONED NORTHERLY LINE OF GOVERNMENT LOT 12, SECTION 19; THENCE NORTH 89° 22' 40" EAST, ALONG SAID NORTHERLY LINE OF GOVERNMENT LOT 12, A DISTANCE OF 29.96 FEET TO THE POINT OF BEGINNING.

CONTAINING 1.38 ACRES, MORE OR LESS.



CLARSON & ASSOCIATES, INC.
 PROFESSIONAL SURVEYORS AND MAPPERS
 1643 NALDO AVENUE
 JACKSONVILLE, FLORIDA 32207

PHONE: 396-2623
 FAX: 396-2633

AUGUST 20, 2007

GRAND RAVINE, ST. JOHNS COUNTY, FLORIDA

CONSERVATION EASEMENT 6

A PART OF GOVERNMENT LOT 12, SECTION 19, TOWNSHIP 8 SOUTH, RANGE 30 EAST, ST. JOHNS COUNTY, FLORIDA, BEING MORE PARTICULARLY DESCRIBED AS FOLLOWS:

FOR A POINT OF REFERENCE COMMENCE AT THE INTERSECTION OF THE NORTHERLY RIGHT OF WAY LINE OF ROEHRS ROAD (A 60 FOOT RIGHT OF WAY) WITH THE EASTERLY RIGHT OF WAY LINE OF U.S. HIGHWAY NO. 1 (A 200 FOOT RIGHT OF WAY) AND RUN NORTH 88°40'10" EAST, ALONG SAID NORTHERLY RIGHT OF WAY LINE OF ROEHRS ROAD, A DISTANCE OF 1,069.30 FEET TO A POINT ON THE EASTERLY LINE OF SAID GOVERNMENT LOT 12, SECTION 19 (ALSO BEING THE WESTERLY LINE OF GOVERNMENT LOT 13, SAID SECTION 19 AS SHOWN ON THE PLAT OF ST. AUGUSTINE SHORES UNIT EIGHT, ACCORDING TO MAP BOOK 21, PAGE 58 THROUGH 63 OF THE PUBLIC RECORDS OF SAID COUNTY); THENCE NORTH 00° 22' 32" WEST, ALONG SAID EASTERLY LINE OF GOVERNMENT LOT 12, SECTION 19, A DISTANCE OF 985.68 FEET TO THE POINT OF BEGINNING.

FROM THE POINT OF BEGINNING THUS DESCRIBED RUN NORTH 72° 02' 57" WEST, A DISTANCE OF 59.61 FEET; THENCE NORTH 03° 28' 07" WEST, A DISTANCE OF 35.93 FEET; THENCE NORTH 44° 30' 53" WEST, A DISTANCE OF 53.91 FEET; THENCE NORTH 87° 33' 38" WEST, A DISTANCE OF 46.60 FEET; THENCE SOUTH 71° 09' 44" WEST, A DISTANCE OF 26.99 FEET; THENCE SOUTH 21° 50' 01" EAST, A DISTANCE OF 50.71 FEET; THENCE SOUTH 06° 23' 18" WEST, A DISTANCE OF 42.60 FEET; THENCE SOUTH 29° 56' 13" WEST, A DISTANCE OF 15.38 FEET; THENCE NORTH 86° 57' 14" WEST, A DISTANCE OF 61.24 FEET; THENCE SOUTH 70° 31' 57" WEST, A DISTANCE OF 61.82 FEET; THENCE SOUTH 48° 04' 11" WEST, A DISTANCE OF 47.19 FEET; THENCE SOUTH 32° 50' 18" EAST, A DISTANCE OF 16.85 FEET; THENCE SOUTH 17° 45' 40" EAST, A DISTANCE OF 70.59 FEET; THENCE SOUTH 09° 05' 44" WEST, A DISTANCE OF 38.31 FEET; THENCE SOUTH 23° 21' 04" WEST, A DISTANCE OF 68.58 FEET; THENCE SOUTH 43° 14' 02" WEST, A DISTANCE OF 45.85 FEET; THENCE SOUTH 08° 17' 07" EAST, A DISTANCE OF 21.13 FEET; THENCE SOUTH 29° 46' 37" WEST, A DISTANCE OF 41.97 FEET; THENCE SOUTH 88° 58' 47" WEST, A DISTANCE OF 35.80 FEET; THENCE SOUTH 03° 02' 20" EAST, A DISTANCE OF 33.97 FEET; THENCE SOUTH 03° 15' 11" WEST, A DISTANCE OF 54.27 FEET; THENCE

CONSERVATION EASEMENT 6
AUGUST 20, 2007
PAGE 2 OF 2

SOUTH 18° 24' 29" EAST, A DISTANCE OF 40.33 FEET; THENCE SOUTH 44° 59' 43" EAST, A DISTANCE OF 67.36 FEET; THENCE SOUTH 73° 44' 45" EAST, A DISTANCE OF 38.96 FEET; THENCE NORTH 40° 53' 04" EAST, A DISTANCE OF 55.09 FEET; THENCE NORTH 77° 07' 46" EAST, A DISTANCE OF 24.00 FEET; THENCE SOUTH 47° 52' 01" EAST, A DISTANCE OF 68.44 FEET; THENCE SOUTH 03° 59' 28" EAST, A DISTANCE OF 40.50 FEET; THENCE NORTH 70° 26' 52" WEST, A DISTANCE OF 16.36 FEET; THENCE NORTH 03° 59' 28" WEST, A DISTANCE OF 27.92 FEET; THENCE NORTH 47° 52' 01" WEST, A DISTANCE OF 54.59 FEET; THENCE SOUTH 77° 07' 46" WEST, A DISTANCE OF 11.28 FEET; THENCE SOUTH 40° 53' 04" WEST, A DISTANCE OF 59.81 FEET; THENCE NORTH 73° 44' 45" WEST, A DISTANCE OF 52.43 FEET; THENCE NORTH 44° 59' 43" WEST, A DISTANCE OF 74.75 FEET; THENCE NORTH 18° 24' 29" WEST, A DISTANCE OF 39.30 FEET; THENCE NORTH 00° 45' 49" EAST, A DISTANCE OF 63.30 FEET; THENCE NORTH 03° 02' 20" WEST, A DISTANCE OF 58.09 FEET; THENCE NORTH 87° 45' 55" EAST, A DISTANCE OF 47.13 FEET; THENCE NORTH 02° 14' 05" WEST, A DISTANCE OF 197.01 FEET; THENCE NORTH 48° 04' 11" EAST, A DISTANCE OF 67.51 FEET; THENCE NORTH 32° 50' 18" WEST, A DISTANCE OF 9.80 FEET; THENCE NORTH 48° 04' 11" EAST, A DISTANCE OF 62.96 FEET; THENCE NORTH 70° 31' 57" EAST, A DISTANCE OF 23.57 FEET; THENCE NORTH 41° 51' 11" EAST, A DISTANCE OF 191.52 FEET; THENCE SOUTH 89° 59' 50" EAST, A DISTANCE OF 52.15 FEET; THENCE NORTH 00° 00' 10" EAST, A DISTANCE OF 135.00 FEET; THENCE SOUTH 89° 59' 50" EAST, A DISTANCE OF 85.68 FEET TO A POINT ON THE PREVIOUSLY MENTIONED EASTERLY LINE OF GOVERNMENT LOT 12, SECTION 19; THENCE SOUTH 00° 22' 32" EAST, ALONG SAID EASTERLY LINE OF GOVERNMENT LOT 12, A DISTANCE OF 264.52 FEET TO THE POINT OF BEGINNING.

CONTAINING 1.24 ACRES, MORE OR LESS.



CLARSON & ASSOCIATES, INC.
PROFESSIONAL SURVEYORS AND MAPPERS
1643 NALDO AVENUE
JACKSONVILLE, FLORIDA 32207

PHONE: 396-2623
FAX: 396-2633

AUGUST 20, 2007

GRAND RAVINE, ST. JOHNS COUNTY, FLORIDA

CONSERVATION EASEMENT 7

A PART OF GOVERNMENT LOT 12, SECTION 19, TOWNSHIP 8 SOUTH, RANGE 30 EAST, ST. JOHNS COUNTY, FLORIDA, BEING MORE PARTICULARLY DESCRIBED AS FOLLOWS:

FOR A POINT OF REFERENCE COMMENCE AT THE INTERSECTION OF THE NORTHERLY RIGHT OF WAY LINE OF ROEHR'S ROAD (A 60 FOOT RIGHT OF WAY) WITH THE EASTERLY RIGHT OF WAY LINE OF U.S. HIGHWAY NO. 1 (A 200 FOOT RIGHT OF WAY) AND RUN NORTH 88°40'10" EAST, ALONG SAID NORTHERLY RIGHT OF WAY LINE OF ROEHR'S ROAD, A DISTANCE OF 1,069.30 FEET TO A POINT ON THE EASTERLY LINE OF SAID GOVERNMENT LOT 12, SECTION 19 (ALSO BEING THE WESTERLY LINE OF GOVERNMENT LOT 13, SAID SECTION 19 AS SHOWN ON THE PLAT OF ST. AUGUSTINE SHORES UNIT EIGHT, ACCORDING TO MAP BOOK 21, PAGE 58 THROUGH 63 OF THE PUBLIC RECORDS OF SAID COUNTY); THENCE NORTH 00° 22' 32" WEST, ALONG SAID EASTERLY LINE OF GOVERNMENT LOT 12, SECTION 19, A DISTANCE OF 492.91 FEET TO THE POINT OF BEGINNING.

FROM THE POINT OF BEGINNING THUS DESCRIBED RUN SOUTH 89° 37' 38" WEST, A DISTANCE OF 35.03 FEET; THENCE NORTH 76° 48' 36" WEST, A DISTANCE OF 44.19 FEET; THENCE NORTH 50° 26' 09" WEST, A DISTANCE OF 59.93 FEET; THENCE NORTH 16° 27' 37" WEST, A DISTANCE OF 55.40 FEET; THENCE NORTH 62° 41' 19" WEST, A DISTANCE OF 27.50 FEET; THENCE SOUTH 71° 16' 30" WEST, A DISTANCE OF 36.55 FEET; THENCE SOUTH 29° 06' 47" EAST, A DISTANCE OF 68.30 FEET; THENCE SOUTH 10° 51' 01" WEST, A DISTANCE OF 35.62 FEET; THENCE SOUTH 55° 06' 27" EAST, A DISTANCE OF 34.54 FEET; THENCE SOUTH 63° 42' 51" EAST, A DISTANCE OF 36.10 FEET; THENCE SOUTH 85° 33' 43" EAST, A DISTANCE OF 44.39 FEET; THENCE SOUTH 06° 35' 42" EAST, A DISTANCE OF 61.62 FEET; THENCE NORTH 79° 12' 50" WEST, A DISTANCE OF 46.68 FEET; THENCE SOUTH 83° 37' 18" WEST, A DISTANCE OF 49.15 FEET; THENCE SOUTH 40° 33' 29" WEST, A DISTANCE OF 5.50 FEET; THENCE NORTH 59° 23' 02" WEST, A DISTANCE OF 10.19 FEET; THENCE NORTH 40° 33' 29" EAST, A DISTANCE OF 11.25 FEET; THENCE NORTH 83° 37' 18" EAST, A DISTANCE OF 54.60 FEET; THENCE SOUTH 79° 12' 50" EAST, A DISTANCE OF 34.58 FEET; THENCE NORTH 06° 35' 42" WEST, A DISTANCE OF 39.77 FEET; THENCE NORTH 85° 33' 43" WEST, A DISTANCE OF 38.08

GRAND RAVINE
CONSERVATION EASEMENT 7
AUGUST 20, 2007
PAGE 2 OF 2

FEET; THENCE NORTH 63° 42' 51" WEST, A DISTANCE OF 38.78 FEET; THENCE NORTH 55° 06' 27" WEST, A DISTANCE OF 41.78 FEET; THENCE NORTH 10° 51' 01" EAST, A DISTANCE OF 38.48 FEET; THENCE NORTH 29° 06' 47" WEST, A DISTANCE OF 51.21 FEET; THENCE NORTH 33° 24' 58" WEST, A DISTANCE OF 25.88 FEET; THENCE NORTH 71° 16' 30" EAST, A DISTANCE OF 54.78 FEET; THENCE SOUTH 62° 41' 19" EAST, A DISTANCE OF 36.01 FEET; THENCE SOUTH 16° 27' 37" EAST, A DISTANCE OF 56.62 FEET; THENCE SOUTH 50° 26' 09" EAST, A DISTANCE OF 54.54 FEET; THENCE SOUTH 76° 48' 36" EAST, A DISTANCE OF 43.91 FEET; THENCE NORTH 02° 35' 17" WEST, A DISTANCE OF 55.23 FEET; THENCE NORTH 39° 10' 52" WEST, A DISTANCE OF 46.81 FEET; THENCE NORTH 21° 00' 40" WEST, A DISTANCE OF 31.47 FEET; THENCE NORTH 35° 56' 06" WEST, A DISTANCE OF 49.73 FEET; THENCE NORTH 19° 49' 14" WEST, A DISTANCE OF 67.47 FEET; THENCE NORTH 49° 12' 21" WEST, A DISTANCE OF 41.81 FEET; THENCE NORTH 16° 50' 37" EAST, A DISTANCE OF 65.18 FEET; THENCE NORTH 29° 58' 05" EAST, A DISTANCE OF 34.63 FEET; THENCE NORTH 56° 28' 57" EAST, A DISTANCE OF 53.74 FEET; THENCE NORTH 52° 39' 28" EAST, A DISTANCE OF 93.01 FEET TO A POINT ON THE PREVIOUSLY MENTIONED EASTERLY LINE OF GOVERNMENT LOT 12, SECTION 19; THENCE SOUTH 00° 22' 32" EAST, ALONG SAID EASTERLY LINE OF GOVERNMENT LOT 12, A DISTANCE OF 439.48 FEET TO THE POINT OF BEGINNING.

CONTAINING 1.02 ACRES, MORE OR LESS.



CLARSON & ASSOCIATES, INC.
PROFESSIONAL SURVEYORS AND MAPPERS
1643 NALDO AVENUE
JACKSONVILLE, FLORIDA 32207

PHONE: 396-2623
FAX: 396-2633

AUGUST 20, 2007
REVISED OCTOBER 5, 2007

GRAND RAVINE, ST. JOHNS COUNTY, FLORIDA

CONSERVATION EASEMENT 8

A PART OF GOVERNMENT LOT 12, SECTION 19, TOWNSHIP 8 SOUTH, RANGE 30 EAST, ST. JOHNS COUNTY, FLORIDA, BEING MORE PARTICULARLY DESCRIBED AS FOLLOWS:

FOR A POINT OF REFERENCE COMMENCE AT THE INTERSECTION OF THE NORTHERLY RIGHT OF WAY LINE OF ROEHRS ROAD (A 60 FOOT RIGHT OF WAY) WITH THE EASTERLY RIGHT OF WAY LINE OF U.S. HIGHWAY NO. 1 (A 200 FOOT RIGHT OF WAY) AND RUN NORTH 88°40'10" EAST, ALONG SAID NORTHERLY RIGHT OF WAY LINE OF ROEHRS ROAD, A DISTANCE OF 1,069.30 FEET TO A POINT ON THE EASTERLY LINE OF SAID GOVERNMENT LOT 12, SECTION 19 (ALSO BEING THE WESTERLY LINE OF GOVERNMENT LOT 13, SAID SECTION 19 AS SHOWN ON THE PLAT OF ST. AUGUSTINE SHORES UNIT EIGHT, ACCORDING TO MAP BOOK 21, PAGE 58 THROUGH 63 OF THE PUBLIC RECORDS OF SAID COUNTY); THENCE NORTH 00° 22' 32" WEST, ALONG SAID EASTERLY LINE OF GOVERNMENT LOT 12, SECTION 19, A DISTANCE OF 100.99 FEET TO THE POINT OF BEGINNING.

FROM THE POINT OF BEGINNING THUS DESCRIBED RUN SOUTH 89° 37' 28" WEST, A DISTANCE OF 11.63 FEET; THENCE NORTH 24° 36' 47" WEST, A DISTANCE OF 54.94 FEET; THENCE NORTH 33° 05' 47" WEST, A DISTANCE OF 50.48 FEET; THENCE NORTH 53° 55' 18" WEST, A DISTANCE OF 68.03 FEET; THENCE NORTH 50° 19' 27" WEST, A DISTANCE OF 57.60 FEET; THENCE NORTH 32° 24' 51" WEST, A DISTANCE OF 37.85 FEET; THENCE NORTH 30° 08' 31" WEST, A DISTANCE OF 46.84 FEET; THENCE NORTH 23° 53' 45" EAST, A DISTANCE OF 47.00 FEET; THENCE NORTH 40° 33' 29" EAST, A DISTANCE OF 14.55 FEET; THENCE SOUTH 59° 23' 02" EAST, A DISTANCE OF 10.19 FEET; THENCE SOUTH 40° 33' 29" WEST, A DISTANCE OF 14.89 FEET; THENCE SOUTH 23° 53' 45" WEST, A DISTANCE OF 40.44 FEET; THENCE SOUTH 31° 11' 53" EAST, A DISTANCE OF 77.60 FEET; THENCE SOUTH 50° 19' 27" EAST, A DISTANCE OF 55.71 FEET; THENCE SOUTH 53° 55' 18" EAST, A DISTANCE OF 69.55 FEET; THENCE SOUTH 33° 05' 47" EAST, A DISTANCE OF 35.15 FEET; THENCE NORTH 89° 37' 38" EAST, A DISTANCE OF 35.05 FEET TO A POINT ON THE PREVIOUSLY MENTIONED EASTERLY LINE OF GOVERNMENT LOT 12; THENCE SOUTH 00° 22' 32" EAST, A DISTANCE OF 69.89 FEET TO THE POINT OF BEGINNING.

CONTAINING 0.11 ACRES, MORE OR LESS.



CLARSON & ASSOCIATES, INC.
 PROFESSIONAL SURVEYORS AND MAPPERS
 1643 NALDO AVENUE
 JACKSONVILLE, FLORIDA 32207

PHONE: 396-2623
 FAX: 396-2633

AUGUST 20, 2007

GRAND RAVINE, ST. JOHNS COUNTY, FLORIDA

CONSERVATION EASEMENT 9

A PART OF GOVERNMENT LOT 12, SECTION 19, TOWNSHIP 8 SOUTH, RANGE 30 EAST, ST. JOHNS COUNTY, FLORIDA, BEING MORE PARTICULARLY DESCRIBED AS FOLLOWS:

FOR A POINT OF REFERENCE COMMENCE AT THE INTERSECTION OF THE NORTHERLY RIGHT OF WAY LINE OF ROEHR'S ROAD (A 60 FOOT RIGHT OF WAY) WITH THE EASTERLY RIGHT OF WAY LINE OF U.S. HIGHWAY NO. 1 (A 200 FOOT RIGHT OF WAY) AND RUN NORTH 88°40'10" EAST, ALONG SAID NORTHERLY RIGHT OF WAY LINE OF ROEHR'S ROAD, A DISTANCE OF 846.26 FEET TO A POINT; THENCE NORTH 03° 45' 00" WEST, A DISTANCE OF 44.21 FEET TO THE POINT OF BEGINNING.

FROM THE POINT OF BEGINNING THUS DESCRIBED CONTINUE NORTH 03° 45' 00" WEST, A DISTANCE OF 8.45 FEET; THENCE NORTH 16° 44' 09" WEST, A DISTANCE OF 75.74 FEET; THENCE NORTH 26° 41' 01" WEST, A DISTANCE OF 28.93 FEET; THENCE NORTH 16° 44' 28" WEST, A DISTANCE OF 79.50 FEET; THENCE NORTH 62° 47' 55" EAST, A DISTANCE OF 38.62 FEET; THENCE NORTH 13° 10' 13" WEST, A DISTANCE OF 47.87 FEET; THENCE NORTH 04° 21' 15" WEST, A DISTANCE OF 65.23 FEET; THENCE NORTH 03° 25' 35" EAST, A DISTANCE OF 39.15 FEET; THENCE NORTH 52° 42' 24" EAST, A DISTANCE OF 48.75 FEET; THENCE SOUTH 70° 26' 52" EAST, A DISTANCE OF 17.92 FEET; THENCE SOUTH 52° 42' 24" WEST, A DISTANCE OF 51.67 FEET; THENCE SOUTH 03° 25' 35" WEST, A DISTANCE OF 31.53 FEET; THENCE SOUTH 04° 23' 16" EAST, A DISTANCE OF 63.47 FEET; THENCE SOUTH 13° 18' 10" EAST, A DISTANCE OF 57.74 FEET; THENCE SOUTH 62° 47' 55" WEST, A DISTANCE OF 37.87 FEET; THENCE SOUTH 16° 44' 28" EAST, A DISTANCE OF 58.65 FEET; THENCE SOUTH 75° 02' 45" EAST, A DISTANCE OF 44.80 FEET; THENCE SOUTH 03° 43' 04" WEST, A DISTANCE OF 40.68 FEET; THENCE SOUTH 15° 16' 21" EAST, A DISTANCE OF 63.13 FEET; THENCE SOUTH 79° 48' 16" WEST, A DISTANCE OF 34.41 FEET TO THE POINT OF BEGINNING.

CONTAINING 0.21 ACRES, MORE OR LESS.



CLARSON & ASSOCIATES, INC.
PROFESSIONAL SURVEYORS AND MAPPERS
1643 NALDO AVENUE
JACKSONVILLE, FLORIDA 32207

PHONE: 396-2623
FAX: 396-2633

AUGUST 20, 2007

GRAND RAVINE, ST. JOHNS COUNTY, FLORIDA

CONSERVATION EASEMENT 10

A PART OF GOVERNMENT LOT 12, SECTION 19, TOWNSHIP 8 SOUTH, RANGE 30 EAST, ST. JOHNS COUNTY, FLORIDA, BEING MORE PARTICULARLY DESCRIBED AS FOLLOWS:

FOR A POINT OF REFERENCE COMMENCE AT THE INTERSECTION OF THE NORTHERLY RIGHT OF WAY LINE OF ROEHRS ROAD (A 60 FOOT RIGHT OF WAY) WITH THE EASTERLY RIGHT OF WAY LINE OF U.S. HIGHWAY NO. 1 (A 200 FOOT RIGHT OF WAY) AND RUN NORTH 88°40'10" EAST, ALONG SAID NORTHERLY RIGHT OF WAY LINE OF ROEHRS ROAD, A DISTANCE OF 504.71 FEET TO A POINT; THENCE NORTH 12° 40' 15" WEST, A DISTANCE OF 20.40 FEET TO THE POINT OF BEGINNING.

FROM THE POINT OF BEGINNING THUS DESCRIBED RUN SOUTH 88° 40' 10" WEST, A DISTANCE OF 15.30 FEET; THENCE NORTH 12° 40' 15" WEST, A DISTANCE OF 26.03 FEET; THENCE SOUTH 73° 19' 46" WEST, A DISTANCE OF 24.50 FEET; THENCE NORTH 17° 38' 15" EAST, A DISTANCE OF 78.29 FEET; THENCE NORTH 51° 12' 49" WEST, A DISTANCE OF 27.14 FEET; THENCE NORTH 84° 15' 51" WEST, A DISTANCE OF 43.27 FEET; THENCE NORTH 30° 46' 32" WEST, A DISTANCE OF 60.07 FEET; THENCE SOUTH 89° 40' 12" WEST, A DISTANCE OF 67.81 FEET; THENCE NORTH 18° 48' 53" WEST, A DISTANCE OF 46.02 FEET; THENCE NORTH 81° 40' 49" EAST, A DISTANCE OF 15.26 FEET; THENCE SOUTH 18° 48' 52" EAST, A DISTANCE OF 32.44 FEET; THENCE NORTH 89° 40' 12" EAST, A DISTANCE OF 65.59 FEET; THENCE SOUTH 30° 46' 32" EAST, A DISTANCE OF 61.10 FEET; THENCE SOUTH 84° 15' 51" EAST, A DISTANCE OF 40.16 FEET; THENCE SOUTH 51° 12' 49" EAST, A DISTANCE OF 38.81 FEET; THENCE SOUTH 00° 12' 40" WEST, A DISTANCE OF 9.52 FEET; THENCE SOUTH 17° 38' 15" WEST, A DISTANCE OF 28.09 FEET; THENCE SOUTH 12° 40' 15" EAST, A DISTANCE OF 65.08 FEET TO THE POINT OF BEGINNING.

CONTAINING 0.13 ACRES, MORE OR LESS.



T 20, 2007

CLARSON & ASSOCIATES, INC.

PROFESSIONAL SURVEYORS AND MAPPERS

1643 NALDO AVENUE

JACKSONVILLE, FLORIDA 32207

PHONE: 396-2623
FAX: 396-2633

GRAND RAVINE, ST. JOHNS COUNTY, FLORIDA

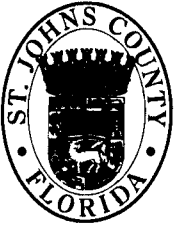
CONSERVATION EASEMENT 11

A PART OF GOVERNMENT LOT 12, SECTION 19, TOWNSHIP 8 SOUTH, RANGE 30 EAST, ST. JOHNS COUNTY, FLORIDA, BEING MORE PARTICULARLY DESCRIBED AS FOLLOWS:

FOR A POINT OF REFERENCE COMMENCE AT THE INTERSECTION OF THE NORTHERLY RIGHT OF WAY LINE OF ROEHRS ROAD (A 60 FOOT RIGHT OF WAY) WITH THE EASTERLY RIGHT OF WAY LINE OF U.S. HIGHWAY NO. 1 (A 200 FOOT RIGHT OF WAY) AND RUN NORTH 08° 33' 14" WEST, ALONG SAID EASTERLY RIGHT OF WAY LINE OF U.S. HIGHWAY NO. 1, A DISTANCE OF 724.33 FEET; THENCE NORTH 81° 29' 58" EAST, A DISTANCE OF 56.24 FEET; THENCE NORTH 00° 22' 18" WEST, A DISTANCE OF 16.26 FEET; THENCE NORTH 89° 37' 42" EAST, A DISTANCE OF 48.10 FEET; THENCE SOUTH 00° 15' 30" WEST, A DISTANCE OF 29.86 FEET; THENCE SOUTH 54° 11' 03" EAST, A DISTANCE OF 5.01 FEET TO THE POINT OF BEGINNING.

FROM THE POINT OF BEGINNING THUS DESCRIBED CONTINUE SOUTH 54° 11' 03" EAST, A DISTANCE OF 19.65 FEET; THENCE SOUTH 33° 43' 28" EAST, A DISTANCE OF 24.47 FEET; THENCE SOUTH 63° 33' 18" EAST, A DISTANCE OF 65.33 FEET; THENCE SOUTH 18° 37' 42" EAST, A DISTANCE OF 124.78 FEET; THENCE SOUTH 33° 43' 28" EAST, A DISTANCE OF 27.64 FEET; THENCE NORTH 71° 23' 07" EAST, A DISTANCE OF 49.32 FEET; THENCE SOUTH 18° 18' 50" EAST, A DISTANCE OF 52.46 FEET; THENCE SOUTH 29° 21' 17" EAST, A DISTANCE OF 48.40 FEET; THENCE SOUTH 48° 03' 01" EAST, A DISTANCE OF 48.40 FEET; THENCE SOUTH 64° 04' 04" EAST, A DISTANCE OF 49.36 FEET; THENCE SOUTH 00° 03' 59" EAST, A DISTANCE OF 43.92 FEET; THENCE SOUTH 49° 45' 38" EAST, A DISTANCE OF 10.12 FEET; THENCE SOUTH 02° 10' 31" WEST, A DISTANCE OF 73.13 FEET; THENCE SOUTH 81° 40' 49" WEST, A DISTANCE OF 15.26 FEET; THENCE NORTH 02° 10' 31" EAST, A DISTANCE OF 68.60 FEET; THENCE NORTH 49° 45' 38" WEST, A DISTANCE OF 89.95 FEET; THENCE NORTH 26° 05' 59" WEST, A DISTANCE OF 43.10 FEET; THENCE NORTH 50° 46' 04" WEST, A DISTANCE OF 84.13 FEET; THENCE NORTH 33° 43' 47" WEST, A DISTANCE OF 262.06 FEET; THENCE NORTH 49° 03' 09" WEST, A DISTANCE OF 15.55 FEET; THENCE NORTH 31° 26' 24" EAST, A DISTANCE OF 13.36 FEET TO THE POINT OF BEGINNING.

CONTAINING 0.39 ACRES, MORE OR LESS.



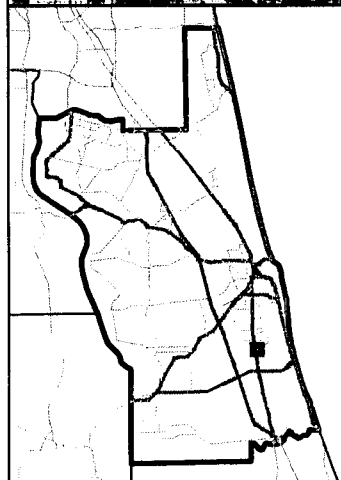
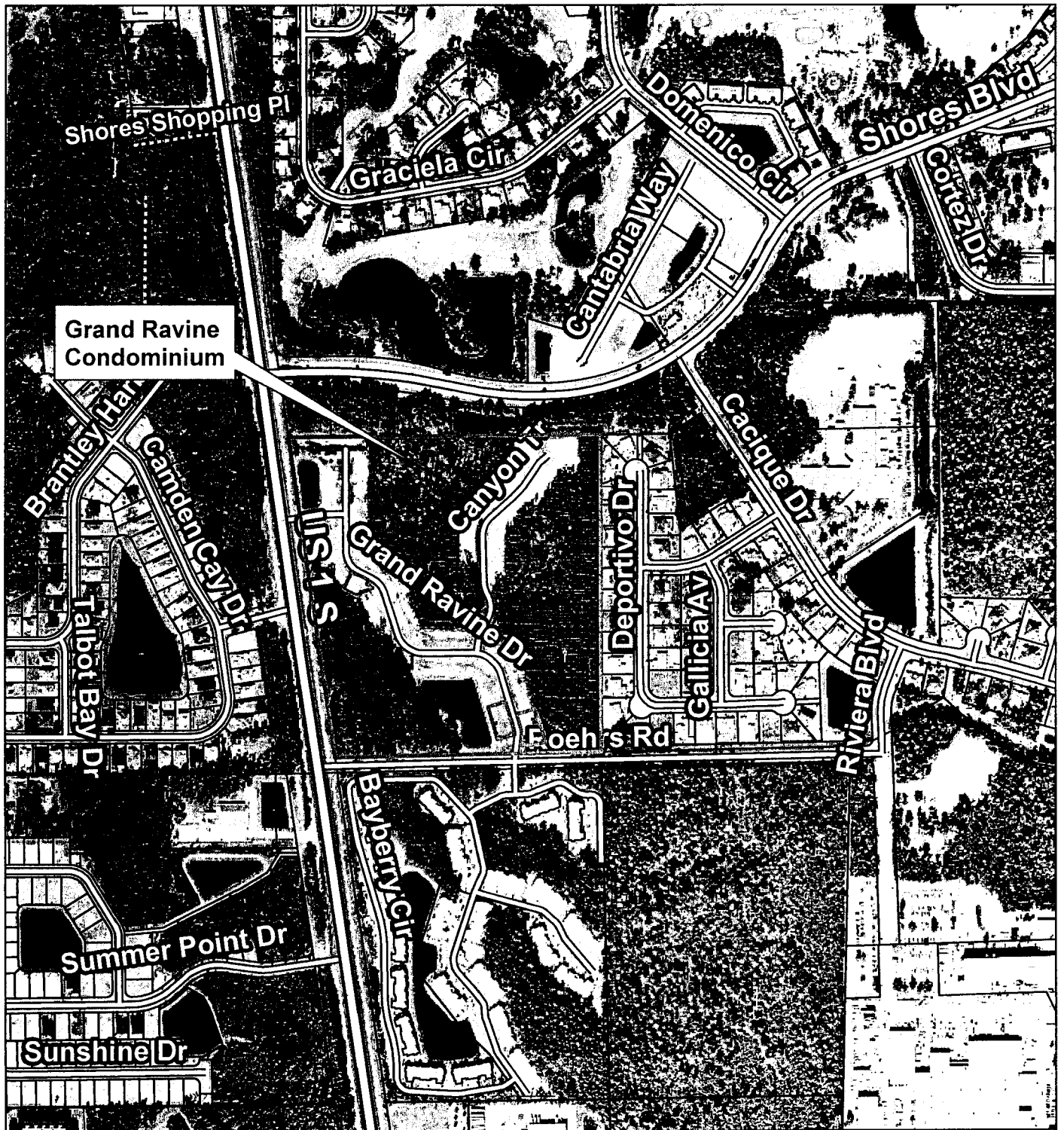
St. Johns County Board of County Commissioners

Utility Department

INTEROFFICE MEMORANDUM

TO: Nanette Bradbury
FROM: Robert Zammataro
SUBJECT: Grand Ravines
DATE: 2/26/10

St. Johns County Utility Department has no objections to releasing the conservation easements located within the subject project to the St. Johns Water Management District. It is the Utility's understanding, that releasing the conservation easement has no impact on the utilities which have been installed onsite. Nor will the release of these easements affect the operation and maintenance of the onsite utilities. If you need any further clarification please do not hesitate in calling.



Grand Ravine Release of Easement

0 185 370 740 1,110 1,480
Feet

St. Johns County
Land Mgmt Systems
Real Estate Division



Map Prepared
February 26, 2010
(904) 209-0788



DISCLAIMER.
This map is for reference use
only. Data provided are derived
from multiple sources with
varying levels of accuracy.