

RESOLUTION NO. 2012-122
RESOLUTION OF THE BOARD OF COUNTY
COMMISSIONERS OF ST. JOHNS COUNTY, FLORIDA
APPROVING A PLAT FOR DAVIS PARK ROAD

WHEREAS, SONOC COMPANY, A FLORIDA LIMITED LIABILITY CORPORATION, AS OWNER, has applied to the Board of County Commissioners of St. Johns County, Florida for approval to record a plat known as DAVIS PARK ROAD.

NOW, THEREFORE BE IT RESOLVED BY THE BOARD OF COUNTY COMMISSIONERS OF ST. JOHNS COUNTY, FLORIDA, as follows:

Section 1. The above-described subdivision plat and its dedicated areas depicted thereon are conditionally approved and accepted by the Board of County Commissioners of St. Johns County, Florida subject to Sections 2, 3, 4, 5 and 6.

Section 2. No Required Improvements Bond for construction will be required.

Section 3. No Required Improvements Bond for maintenance will be required.

Section 4. The approval and acceptance described in Section 1 shall not take effect until the Clerk has received a title opinion, certificate, or policy pertaining to the real property that is the subject of the a forenamed subdivision plat which opinion, certificate or policy is in a form acceptable to the County Attorney or Assistant County Attorney.

Section 5. The Clerk is instructed to file and record the consent and joinder (s) to the plat executed by all mortgages identified in the title opinion or certificate of the title in Section 4.

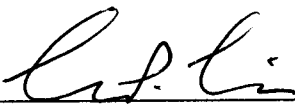
Section 6. The approval and acceptance described in Section 1 shall not take effect until the plat has been signed by each of the following departments, person or offices:

- a) Chairman or Vice-Chairman of the Board of County Commissioners of St. Johns County, Florida;
- b) Office of the County Attorney;
- c) County Growth Management Department;
- d) Office of the County Surveyor; and
- e) Clerk of Courts.


The Clerk shall not sign or accept the Plat for recording until it has been signed by each of the above persons or entities described in a) through d) above. If the plat is not signed and accepted by the Clerk for recording within 14 days from the date hereof, then the above-described conditional approval shall automatically terminate. If the plat is signed by the Clerk on or before such time, the conditions described herein shall be deemed to have been met.

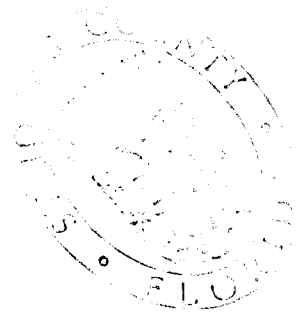
ADOPTED by the Board of County Commissioners of St. Johns County, Florida, this 17th day of April, 2012.

BOARD OF COUNTY COMMISSIONERS
OF ST. JOHNS COUNTY, FLORIDA

BY: 
Mark P. Miner, Chair

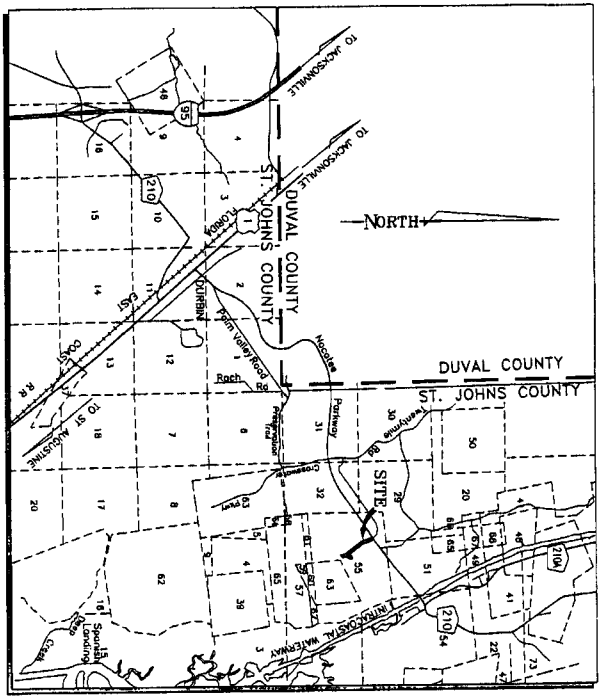
ATTEST: Cheryl Strickland


Deputy Clerk

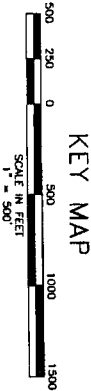
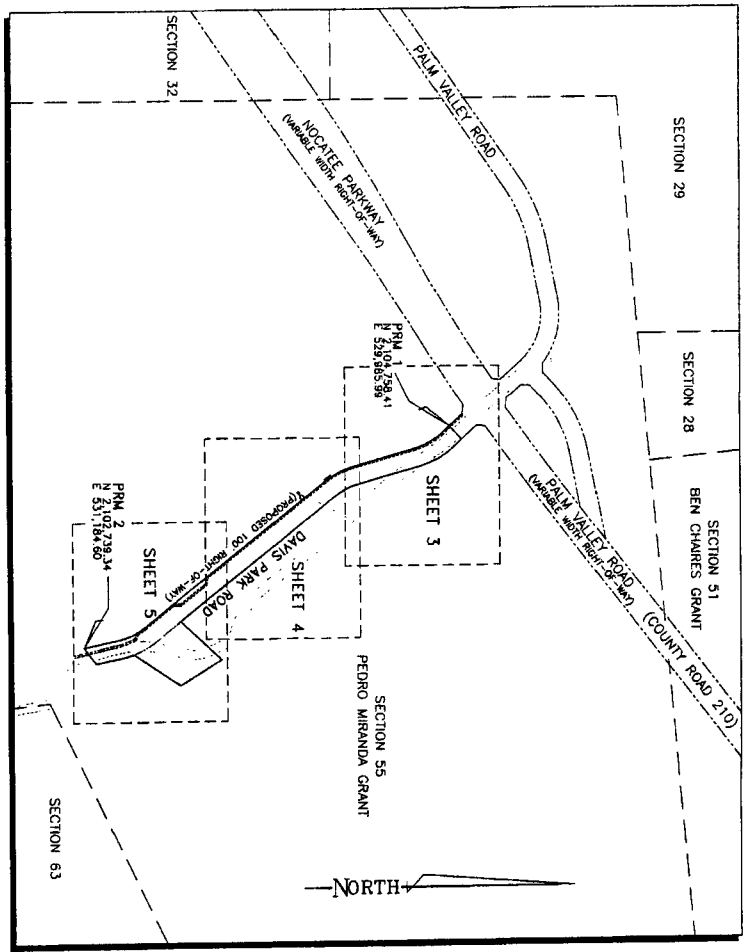


RENDITION DATE 4/19/12

Attachment 2
Plat Map



VICINITY MAP
 -NOT TO SCALE-



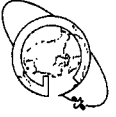
KEY MAP

- NOTES:
- 1) BEARINGS SHOWN HEREON REFER TO THE FLORIDA STATE PLANE COORDINATE SYSTEM, FLORIDA EAST ZONE (801) NORTH AMERICAN DATUM OF 1983/1991 AND ARE BASED ON A PORTION OF PARKWAY BEING RECORDED IN MAP PARKWAY (IN 47-43-47-M) AS SHOWN ON SHEET 10 OF THE PUBLIC RECORDS OF ST. JOHNS COUNTY, FLORIDA BOOK 58; PAGES 28 THROUGH 36 OF THE PUBLIC RECORDS OF ST. JOHNS COUNTY, FLORIDA.
 - 2) COORDINATES AND DISTANCES SHOWN HEREON ARE IN U.S. SURVEY FEET AND REFER TO FLORIDA STATE PLANE COORDINATES AS INDICATED IN NOTE 1 AND ARE BASED ON NATIONAL GEODETIC SURVEY MARKERS DURBIN 2 AND ELZETZ. SURVEY MARKER DURBIN 2 COORDINATES: N 2,092,535.84 E 509,677.01 SURVEY MARKER ELZETZ COORDINATES: N 2,030,457.70 E 524,684.19
 - 3) SECTION LINES SHOWN HEREON ARE FOR REFERENCE ONLY AND WERE NOT FIELD VERIFIED BY THIS SURVEYOR.
 - 4) THIS PLAN AS RECORDED IN ITS GRAPHIC FORM, IS THE OFFICIAL DEPICTION OF THE SUBDIVIDED LANDS DESCRIBED HEREIN AND WILL IN NO CIRCUMSTANCES BE SUPPLANTED IN AUTHORITY BY ANY OTHER GRAPHIC OR DIGITAL FORM OF THE PLAN THERE MAY BE ADDITIONAL RESTRICTIONS THAT ARE NOT RECORDED ON THIS PLAN THAT MAY BE FOUND IN THE PUBLIC RECORDS OF ST. JOHNS COUNTY, FLORIDA.

PRELIMINARY
 Date: 12/5/2011

PREPARED BY
GEOMATICS CORP.

SURVEYING-MAPPING-GPS
 2804 N. PETER STREET, UNIT 101
 ST. AUGUSTINE, FL 32084
 Phone (904) 824-3000 Fax (904) 824-3033
 4808-A ROSSFIELD STREET
 JACKSONVILLE, FL 32218
 LICENSED BUSINESS
 FLORIDA #979 GEORGINA #939
 SOUTH CAROLINA #297 ALABAMA #74



POINT	NORTHING	EASTING	DESCRIPTION	SHEET NO.
PRM 1	2,104,758.41	529,985.99	4"x4" CONCRETE MONUMENT, PRM 186979 NORTHWESTERLY CORNER OF BOUNDARY.	3
PRM 2	2,102,739.34	531,184.60	4"x4" CONCRETE MONUMENT, PRM 186979 SOUTHWESTERLY CORNER OF BOUNDARY.	5

NOTE: The intended use of these coordinates is for GIS base mapping purposes. See note 2 for Geodetic Control used