

**RESOLUTION NO. 2012 - 187**

**A RESOLUTION OF THE BOARD OF COUNTY COMMISSIONERS OF ST. JOHNS COUNTY, FLORIDA APPROVING AND ADOPTING THE ST. JOHNS COUNTY COMPREHENSIVE EMERGENCY MANAGEMENT PLAN**

**WHEREAS**, as provided by Section 252.38 Fla. Stat., each Florida county must develop a Comprehensive Emergency Management Plan (CEMP) that is coordinated and consistent with the State Comprehensive Emergency Management Plan, unless otherwise exempted; and

**WHEREAS**, in accordance with Rule 27P-6, F.A.C., such Plan must be renewed each four year period, and the St. Johns County Plan is due for renewal; and

**WHEREAS**, the Plan must be adopted by resolution of the governing body of the jurisdiction before it becomes the Comprehensive Emergency Management Plan for such local government; and

**WHEREAS**, the new St. Johns County CEMP has been approved by the state Division of Emergency Management and the County has been notified of such approval by the Division of Emergency Management, Bureau of Preparedness via correspondence dated June 27, 2012; and

**WHEREAS**, to maintain compliance with the Division of Emergency Management, the County must notify the Division that the County has adopted the new County Plan;

**NOW THEREFORE, BE IT RESOLVED** by the Board of County Commissioners of St. Johns County that:

The new County Comprehensive Emergency Management Plan attached and incorporated herein as Exhibit A is hereby approved and adopted effective immediately.

The St. Johns County Director of Emergency Management is hereby directed to timely notify the state Division of Emergency Management of the date of the County's approval and adoption of the new County Comprehensive Emergency Management Plan.

**PASSED AND ADOPTED** by the Board of County Commissioners of St. Johns County, State of Florida, this 17<sup>th</sup> day of July, 2012.

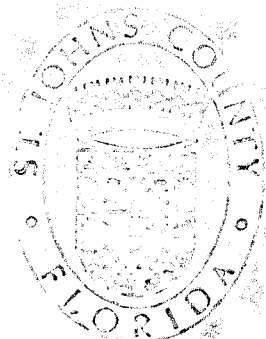
BOARD OF COUNTY COMMISSIONERS  
OF ST. JOHNS COUNTY, FLORIDA

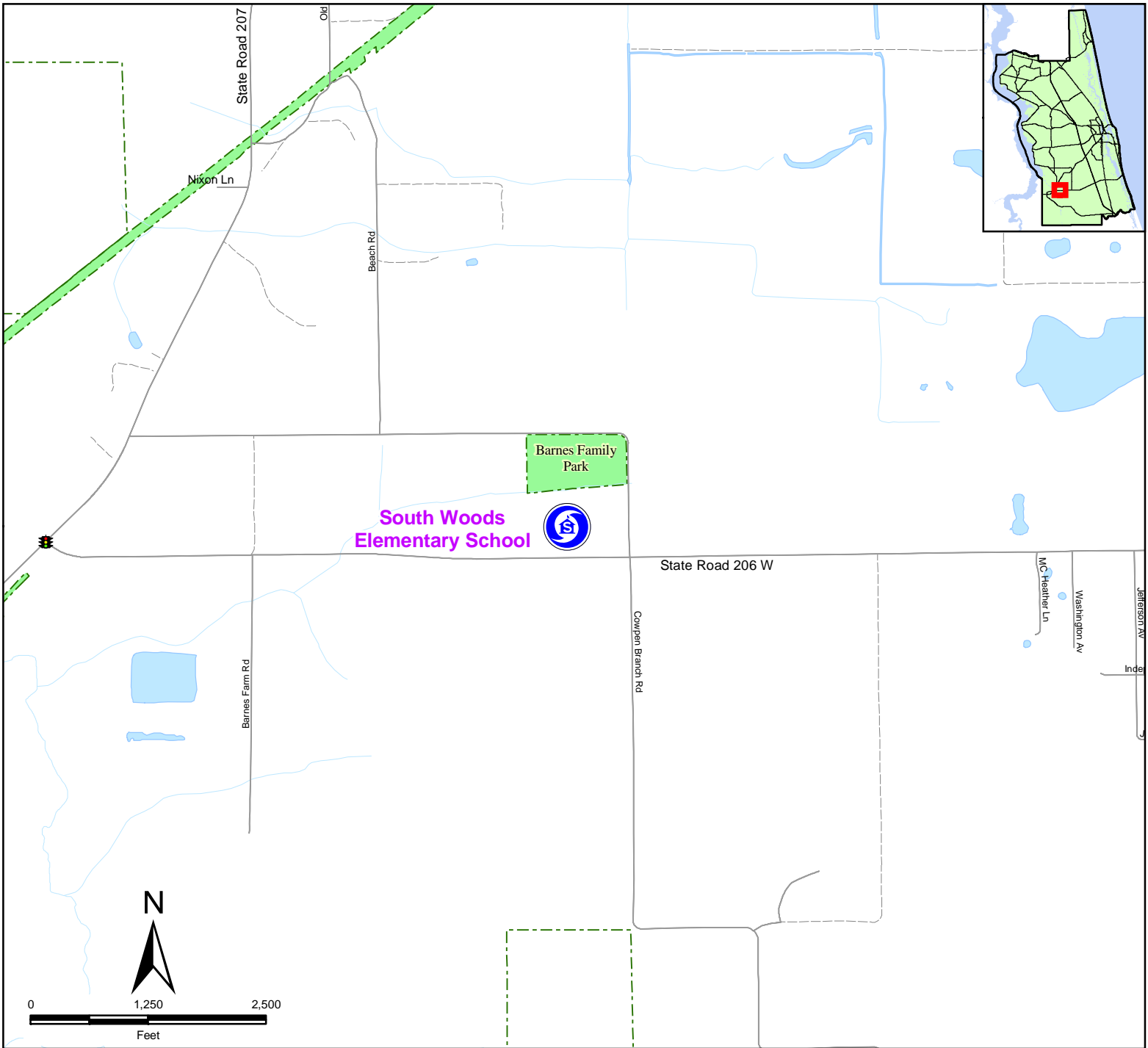
By: *Mark P. Miner*  
Mark P. Miner, Chair

ATTEST: CHERYL STRICKLAND, CLERK

By: *Ram Halterman*

RENDITION DATE 7/19/12





**State Road 207 & State Road 206 W**

Starting at STATE ROAD 207 and STATE ROAD 206 W  
 Turn East on STATE ROAD 206 W (approx. 1 mile)  
 South Woods Elementary School is on the Left(North)

**Driving Directions**

**US 1 S & State Road 206 W**

Starting at US 1 S and STATE ROAD 206 W  
 Travel West on STATE ROAD 206 W (approx. 9.5 miles)  
 South Woods Elementary School is on the Right(North)

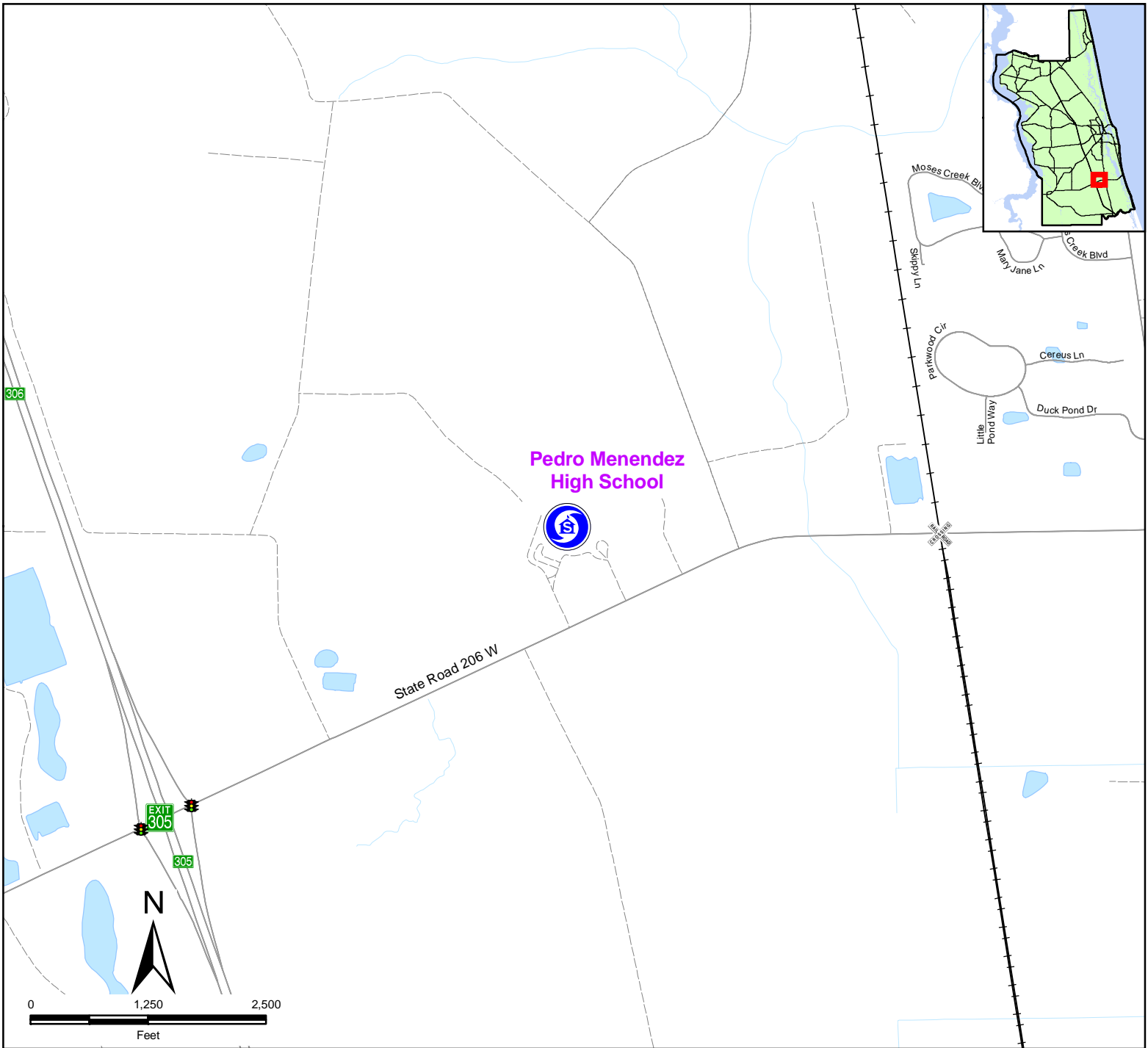


Map Prepared:6/3/2010

**SHELTER LOCATION**

South Woods Elementary School  
 Address: 4750 State Road 206 W  
 Latitude: 29°43'35.18"  
 Longitude: 81°27'50.24"  
 US National Grid: 17RMN5508188563





**I 95 & State Road 206 W (Exit 305)**

Starting at I 95 and STATE ROAD 206 W (Exit 305)  
 Travel East on STATE ROAD 206 W for 1.0 mile  
 Pedro Menendez High School is located on the Left(North)

**Driving Directions**

**US 1 S & State Road 206 W**

Starting at US 1 S and STATE ROAD 206 W  
 Travel West on STATE ROAD 206 W for 1.1 miles  
 Pedro Menendez High School is located on the Right(North)

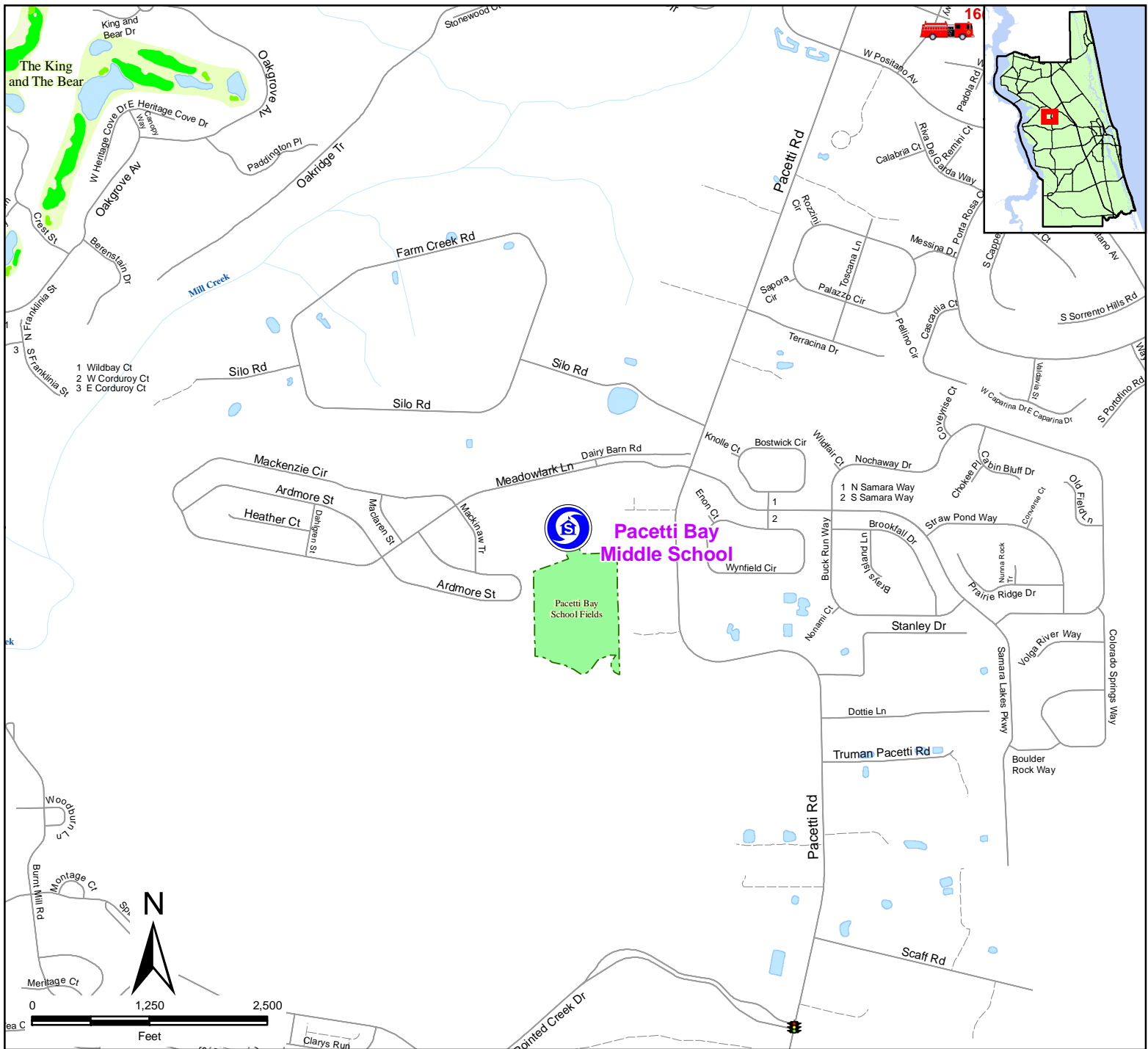


Map Prepared:6/3/2010

**SHELTER LOCATION**

Pedro Menendez High School  
 Address: 600 State Road 206 W  
 Latitude: 29°45'23.45"  
 Longitude: 81°19'58.39"  
 US National Grid: 17RMN6781591852





**I 95 & State Road 16 (Exit 318)**

Starting at I 95 and STATE ROAD 16 (Exist 318)  
 Travel West on STATE ROAD 16 (approx. 6 miles)  
 Turn Left(South) at PACETTI ROAD/COUNTY ROAD-13A (approx. 1.2 miles)  
 Turn Right(West) on MEADOWLARK LN  
 Travel West on MEADOWLARK LN (approx. 0.25 miles)  
 Pacetti Bay Middle School is on the Left(South)

**Driving Directions**

**US 1 N and International Golf Parkway**

Starting at US 1 N and INTERNATIONAL GOLF PKWY  
 Travel West on INTERNATIONAL GOLF PKWY (approx. 7 miles)  
 to the intersection of STATE ROAD 16 and PACETTI ROAD  
 Continue traveling West Southwest on PACETTI ROAD (approx. 1.2 miles)  
 Turn Right(West) on MEADOWLARK LN (approx. 0.25 miles)  
 Pacetti Bay Middle School is on Left(South)



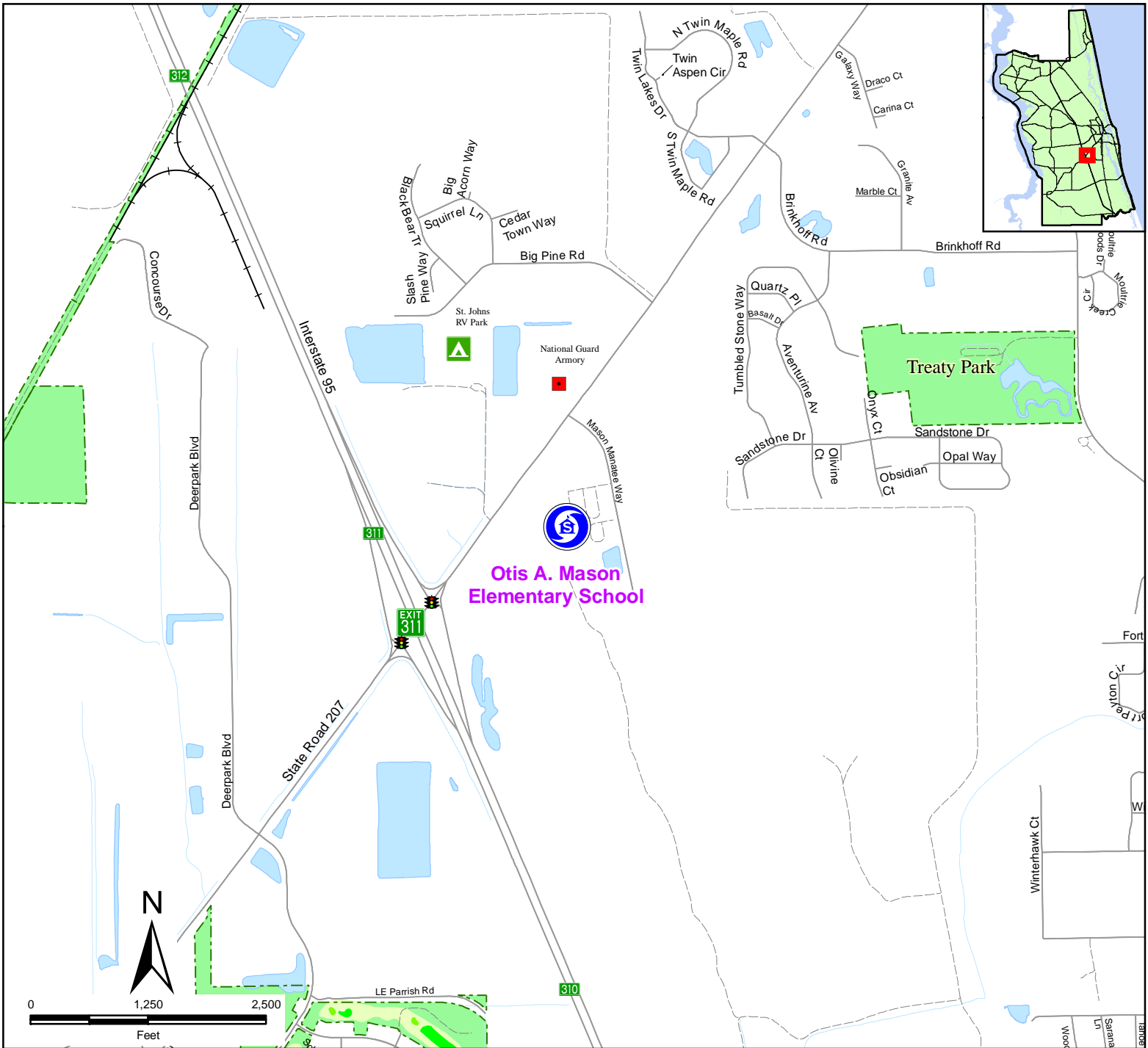
Map Prepared: 5/5/2010

**SHELTER LOCATION**

Pacetti Bay Middle School  
 Address: 245 Meadowlark Ln  
 Latitude: 29°56'42.48"  
 Longitude: 81°30'9.08"

US National Grid: 17RMP5150512813





**I 95 & State Road 207 (Exit 311)**

Starting at I 95 and STATE ROAD 207 (EXIT 311)  
 Travel North on STATE ROAD 207 for 0.5 miles  
 Turn Right(East) onto MASON MANATEE WAY  
 Travel East on MASON MANATEE WAY for 0.2 Miles  
 Otis A. Mason Elementary School is located on the Right(West)

**Driving Directions**

**US 1 S & State Road 312 W**

Starting at US 1 S and STATE ROAD 312 W  
 Travel West on STATE ROAD 312 for 1.0 miles  
 Turn Left(South) onto STATE ROAD 207  
 Travel South on STATE ROAD 207 for 3.3 miles  
 Turn Left(East) onto MASON MANATEE WAY  
 Travel East on MASON MANATEE WAY for 0.2 Miles  
 Otis A. Mason Elementary School is located on the Right(West)

**SHELTER LOCATION**

Otis A. Mason Elementary School

Address: 2300 State Road 207

Latitude: 29°49'42.00"

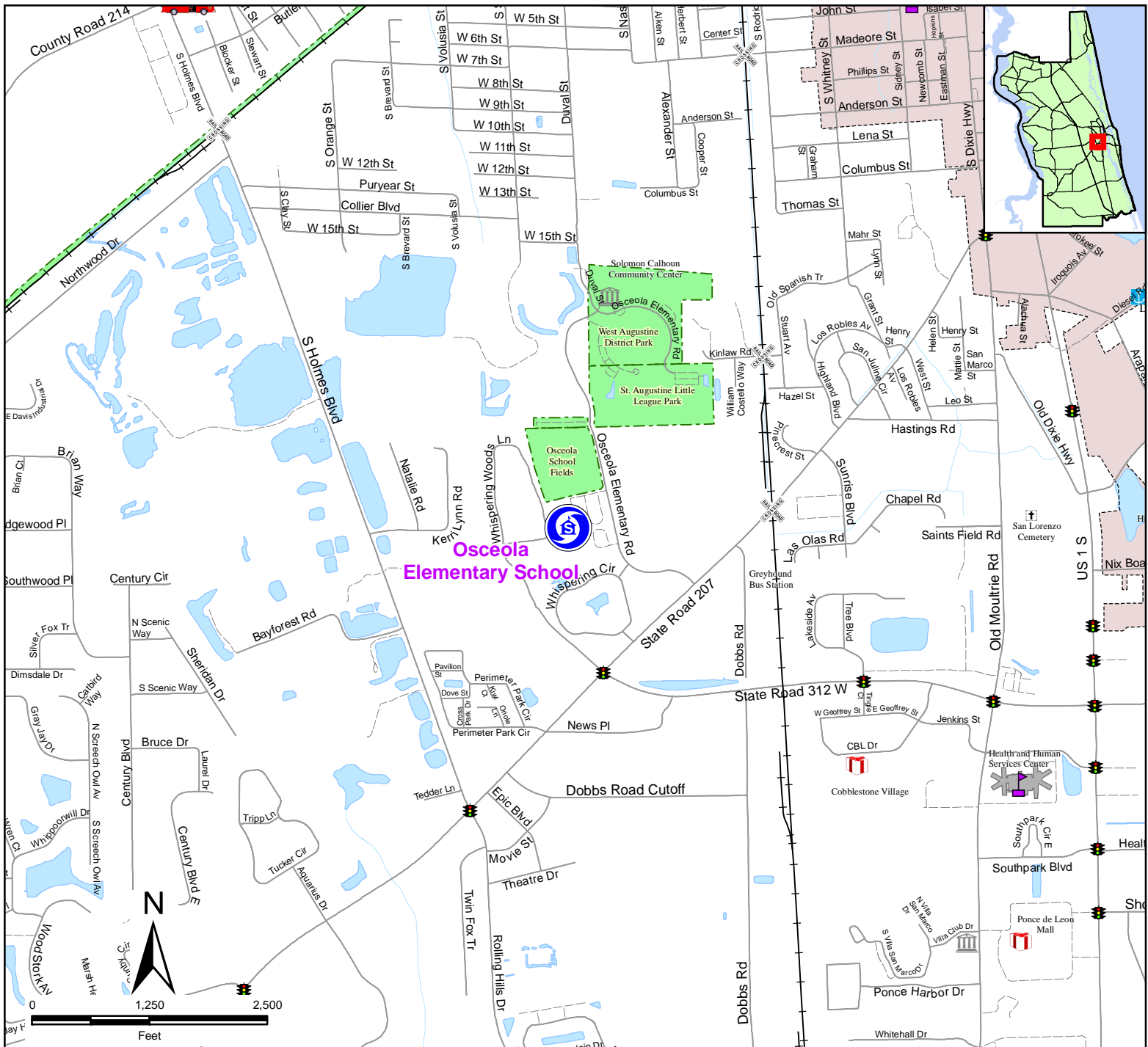
Longitude: 81°22'25.99"

US National Grid: 17RMN6387799822



Map Prepared: 5/5/2010





**I 95 & State Road 207 (Exit 311)**

Starting at I 95 and STATE ROAD 207 (EXIT 311)  
 Travel North on STATE ROAD 207 for 4.0 miles  
 Turn Left onto OSCEOLA ELEMENTARY RD  
 Travel North 0.3 miles on OSCEOLA ELEMENTARY RD  
 Osceola Elementary School is located on the Left (West)

**Driving Directions**

**US 1 S & State Road 312 W**

Starting at US 1 S and STATE ROAD 312 W  
 Travel West on STATE ROAD 312 for 1.0 miles  
 Turn Right (North) onto STATE ROAD 207  
 Travel North on STATE ROAD 207 for 0.3 miles  
 Turn Left onto OSCEOLA ELEMENTARY RD  
 Travel North 0.3 miles on OSCEOLA ELEMENTARY RD  
 Osceola Elementary School is located on the Left (West)



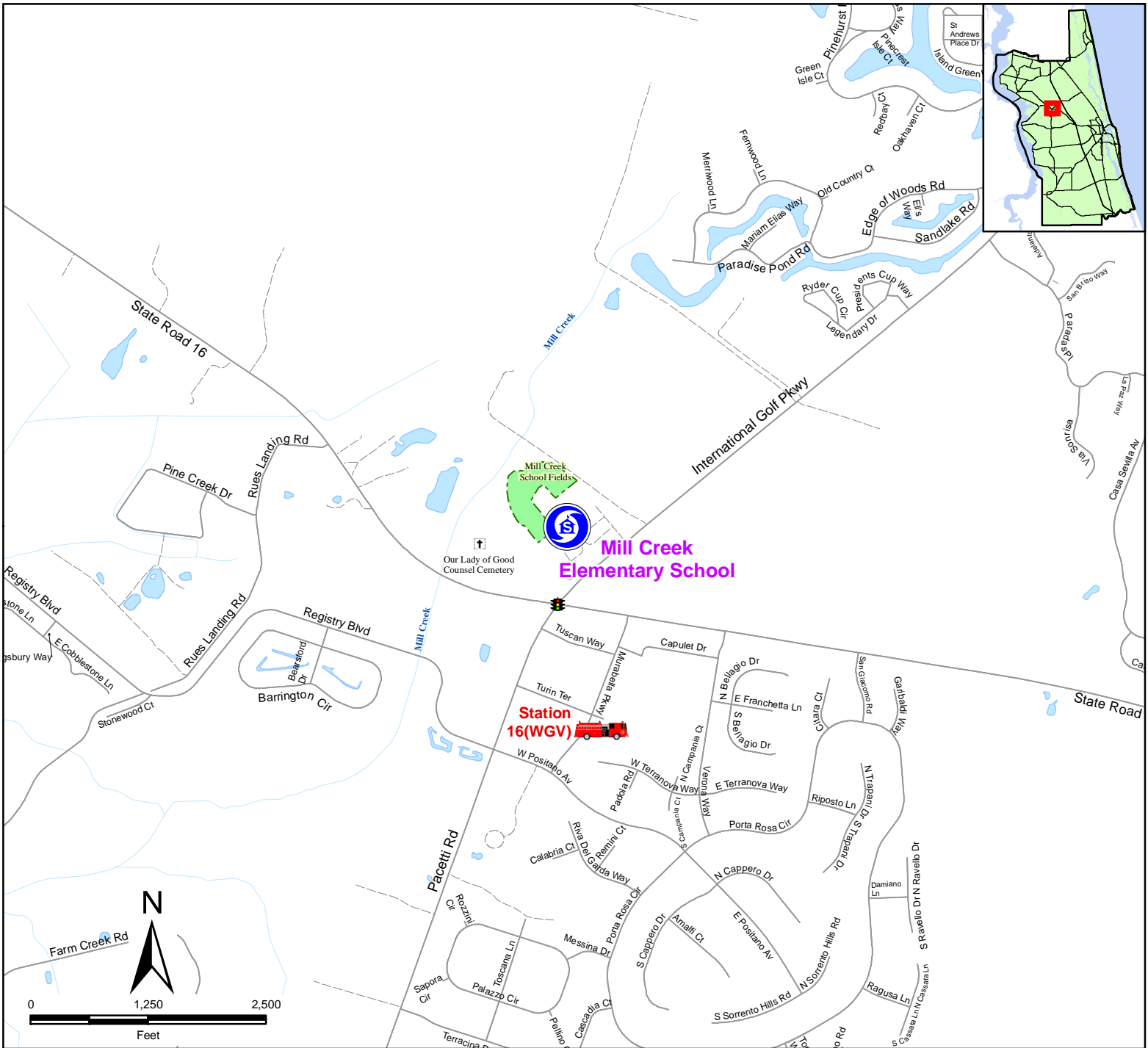
www.SJCFL.us

Map Prepared: 5/5/2010

**SHELTER LOCATION**

Osceola Elementary School  
 Address: 1605 Osceola Elementary Rd  
 Latitude: 29°52'18.96"  
 Longitude: 81°20'26.07"  
 US National Grid: 17RMP6710904643





**Shands Bridge & State Road 13 N**

Starting at SHANDS BRIDGE and STATE ROAD 13 N  
 Travel South on STATE ROAD 13 for 4.0 miles  
 Turn Left(East) onto STATE ROAD 16  
 Travel East on STATE ROAD 16 for 1.7 miles  
 At the intersection of STATE ROAD 16 and COUNTY ROAD 16A turn  
 Right(South) to stay on STATE ROAD 16  
 Continue on STATE ROAD 16 for 1.5 miles  
 Turn Left(East) onto INTERNATIONAL GOLF PKWY  
 Travel 0.2 miles on INTERNATIONAL GOLF PKWY  
 Mill Creek Elementary is located on the Left(North)

**Driving Directions**

**I 95 & International Golf Parkway (Exit 323)**

Starting at I 95 and INTERNATIONAL GOLF PKWY  
 Travel West on INTERNATIONAL GOLF PKWY for 2.2 miles  
 Mill Creek Elementary School is located on the Right(North)

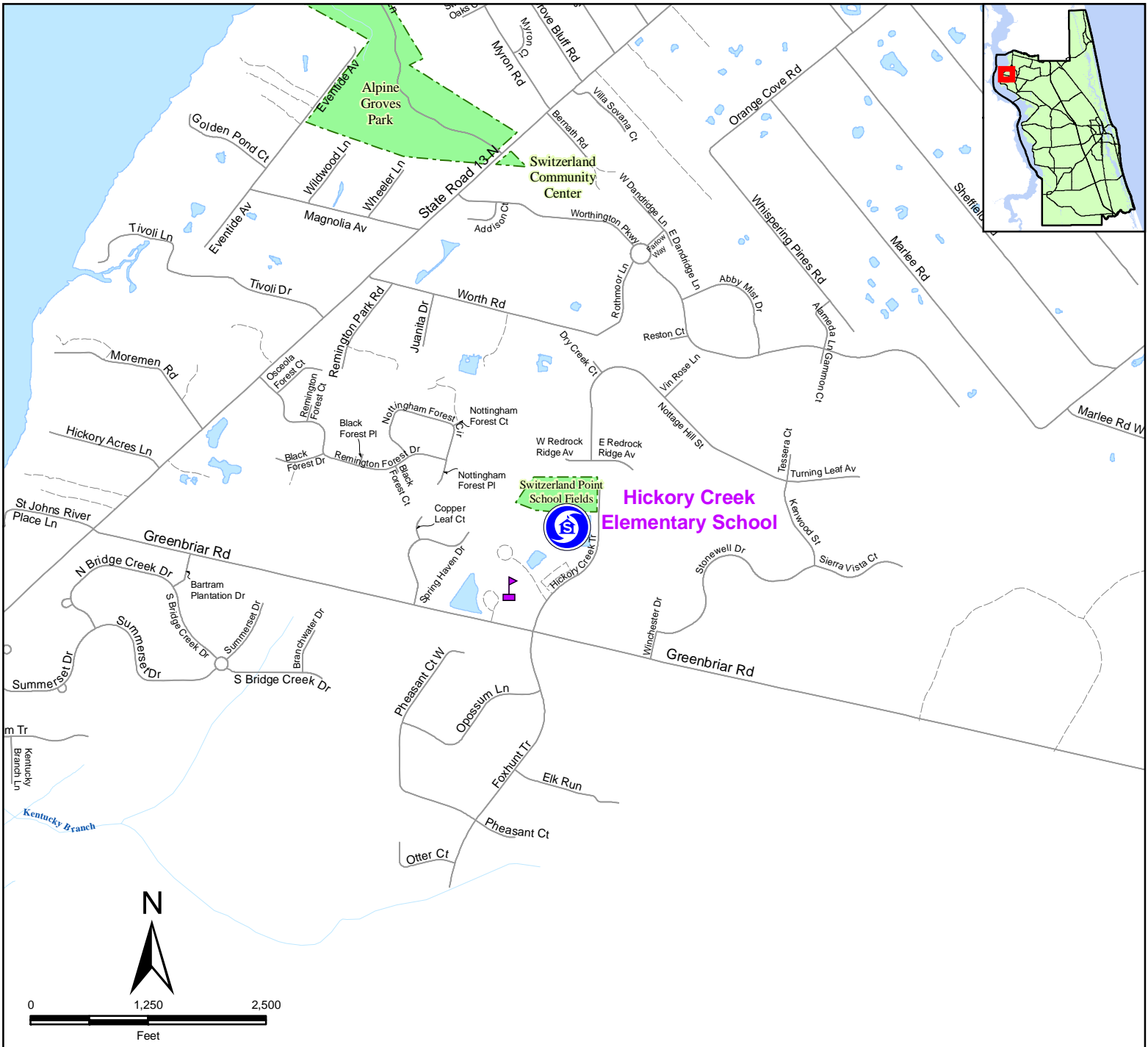


Map Prepared: 5/5/2010

**SHELTER LOCATION**

Mill Creek Elementary School  
 Address: 3750 International Golf Pkwy  
 Latitude: 29°57'56.40"  
 Longitude: 81°29'27.66"  
 US National Grid: 17RMP5262515082





**I 95 & County Road 210 W (Exit 329)**

Starting at I 95 and COUNTY ROAD 210 W (Exit 329)  
 Travel West on COUNTY ROAD 210 W (approx. 5 miles)  
 At the intersection of GREENBRIAR ROAD and COUNTY ROAD 210 W  
 continue West on GREENBRIAR ROAD for (approx. 4.4 miles)  
 Turn Right(North) on HICKORY CREEK TR  
 Travel North on HICKORY CREEK TR for 0.2 miles  
 Hickory Creek Elementary School is on Left(West)

**Driving Directions**

**State Road 13 N & Greenbriar Road**

Starting at STATE ROAD 13 N and GREENBRIAR RD  
 Travel East on GREENBRIAR RD (approx. 1 mile)  
 Turn Left(North) on HICKORY CREEK TR  
 Travel North on HICKORY CREEK TR for 0.2 miles  
 Hickory Creek Elementary School is on Left(West)



Map Prepared: 5/5/2010

**SHELTER LOCATION**

Hickory Creek Elementary School

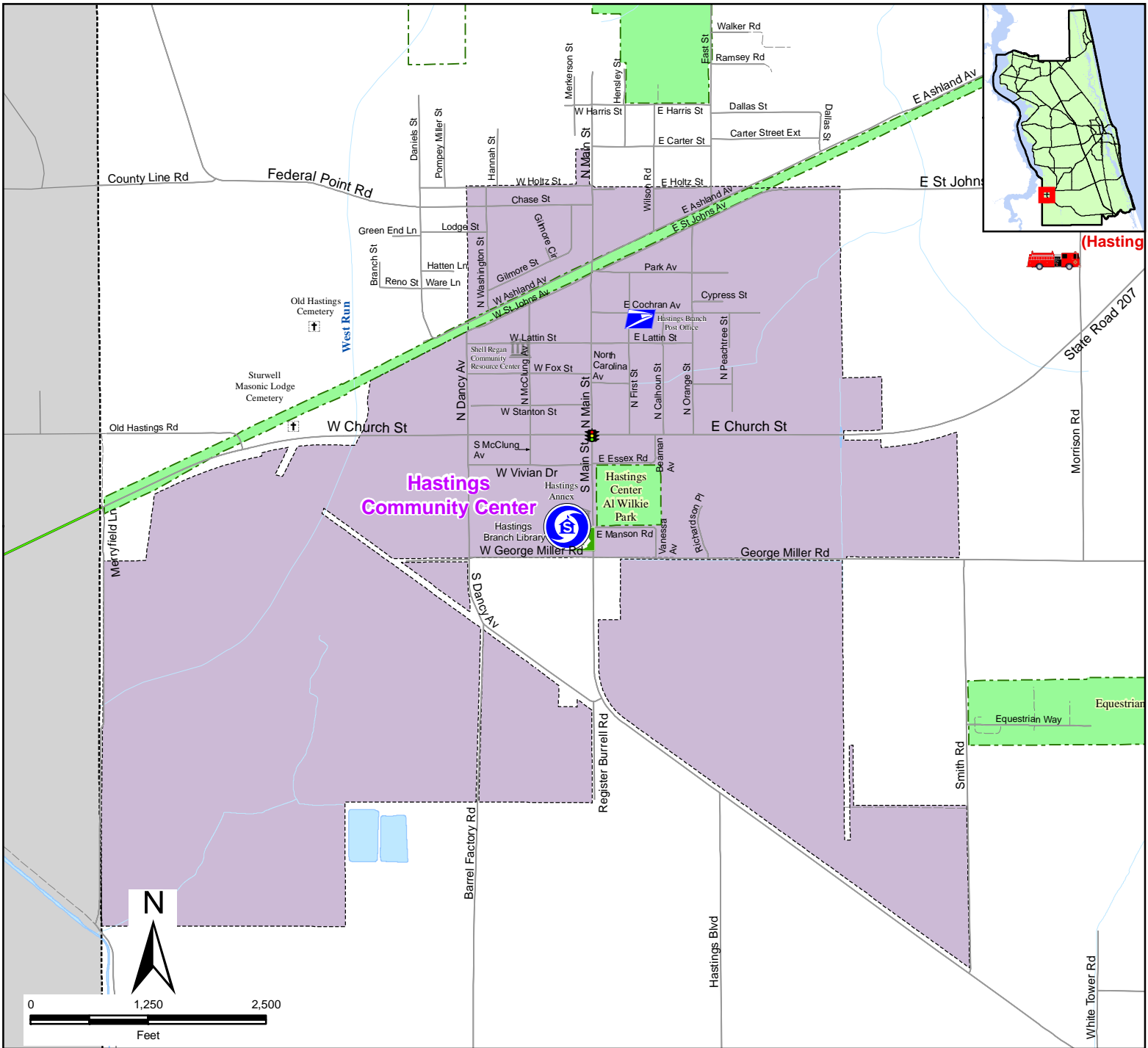
Address: 235 Hickory Creek Tr

Latitude: 30°04'01.66"

Longitude: 81°38'45.60"

US National Grid: 17RMP3778326131





**195 & State Road 207 (Exit 311)**

Starting at I 95 and STATE ROAD 207 (Exit 311)  
 Travel Southwest on STATE ROAD 207 for 11.2 miles  
 STATE ROAD 207 becomes E CHURCH ST  
 Continue on E CHURCH ST for another 0.5 miles  
 Turn Left(South) onto S MAIN ST  
 Travel South on MAIN ST for 0.2 miles  
 Hastings Community Center is located on the Right(West)

**Driving Directions**

**State Road 207 & County Road 13 S**

Starting at STATE ROAD 207 and COUNTY ROAD 13 S  
 Travel South on STATE ROAD 207 for 2.6 miles  
 STATE ROAD 207 becomes E CHURCH ST  
 Continue on E CHURCH ST for another 0.5 miles  
 Turn Left(South) onto S MAIN ST  
 Travel South on MAIN ST for 0.2 miles  
 Hastings Community Center is located on the Right(West)



Map Prepared:6/3/2010

**SHELTER LOCATION**

Hastings Community Center

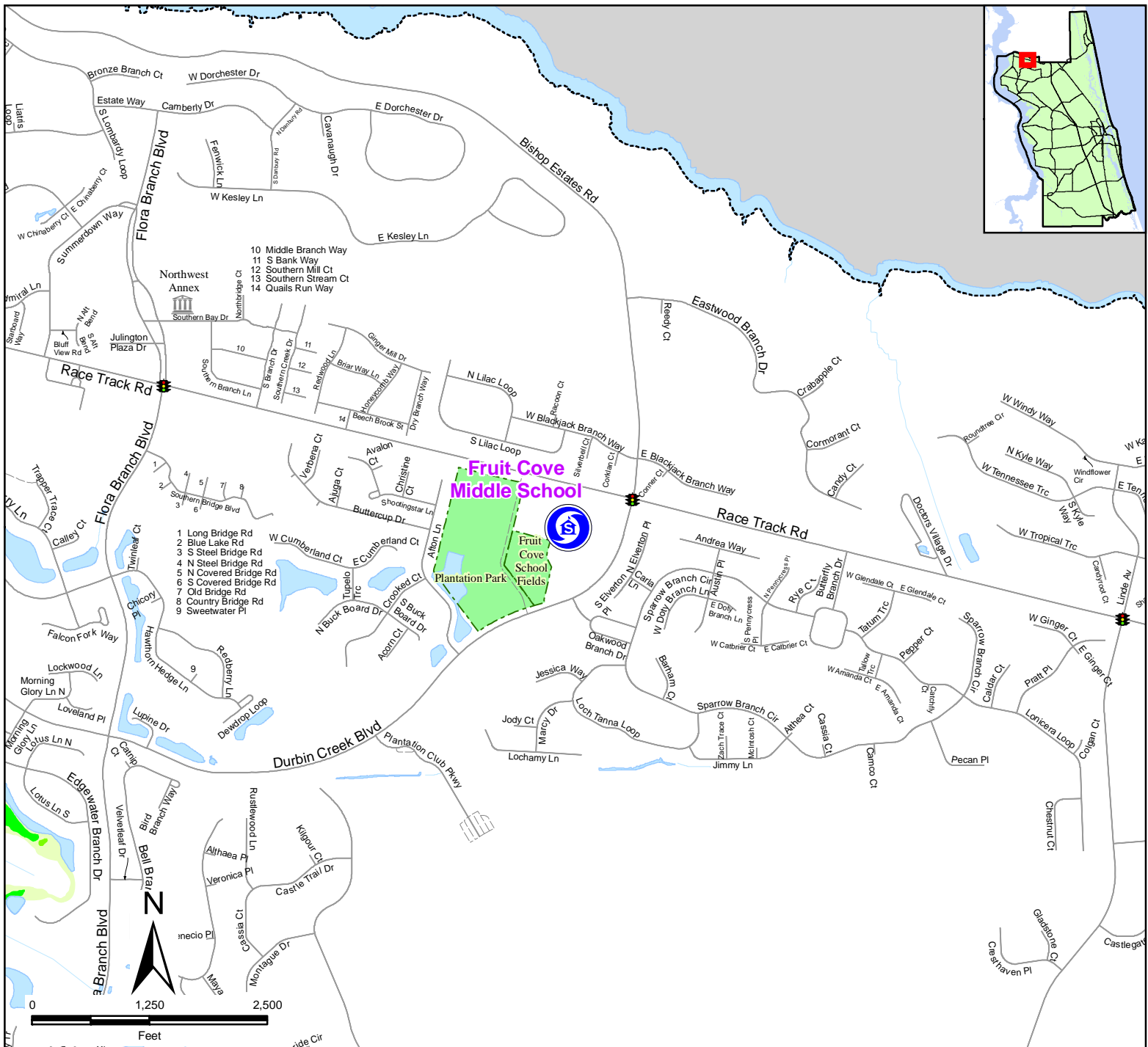
Address: 6195 S Main St

Latitude: 29°42'42.09"

Longitude: 81°30'31.72"

US National Grid: 17RMN5078486947





**State Road 13 N & Race Track Rd**

Starting at STATE ROAD 13 N and RACE TRACK RD  
 Travel East on RACE TRACK RD for 2.8 miles  
 Fruit Cove Middle School is located on the Right(South)

**Driving Directions**

**Race Track Rd & US 1 N**

Starting at RACE TRACK RD and US 1 N  
 Travel West on RACE TRACK RD 6.3 miles  
 Fruit Cove Middle School is located on the Left(South)



www.SJCFCL.us

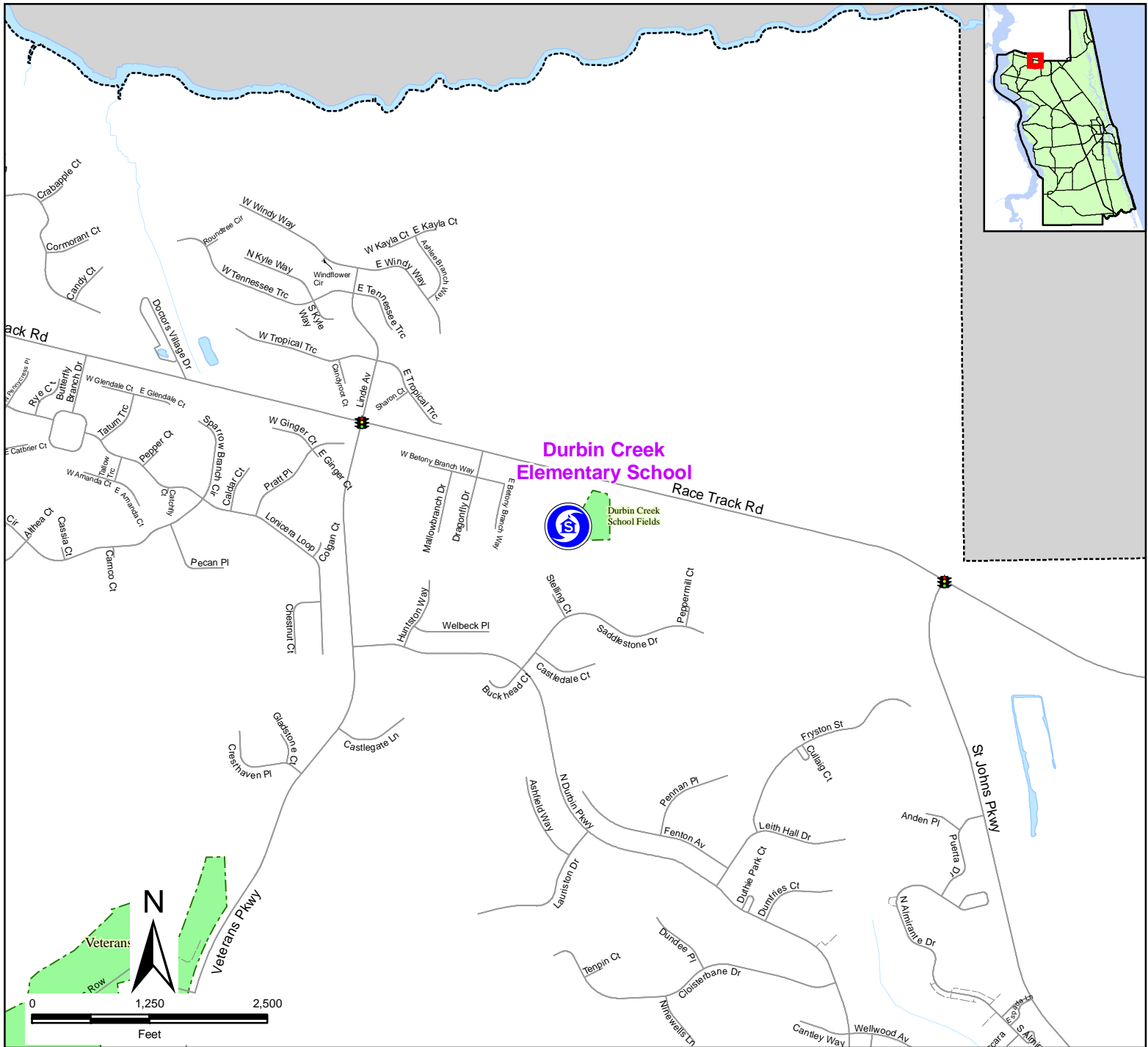
Map Prepared: 5/5/2010

**SHELTER LOCATION**

Fruit Cove Middle School  
 Address: 3180 Race Track Rd  
 Latitude: 30°06'38.02"  
 Longitude: 81°34'39.22"

US National Grid: 17RMP4435631177





**State Road 13 N & Race Track Rd**

Starting at STATE ROAD 13 N and RACE TRACK RD  
 Travel East on RACE TRACK RD for 4.5 miles  
 Durbin Creek Elementary School is located on the Right(South)

**Driving Directions**

**Race Track Rd & US 1 N**

Starting at RACE TRACK RD and US 1 N  
 Travel West on RACE TRACK RD 4.6 miles  
 Durbin Creek Elementary School is located on the Left(South)

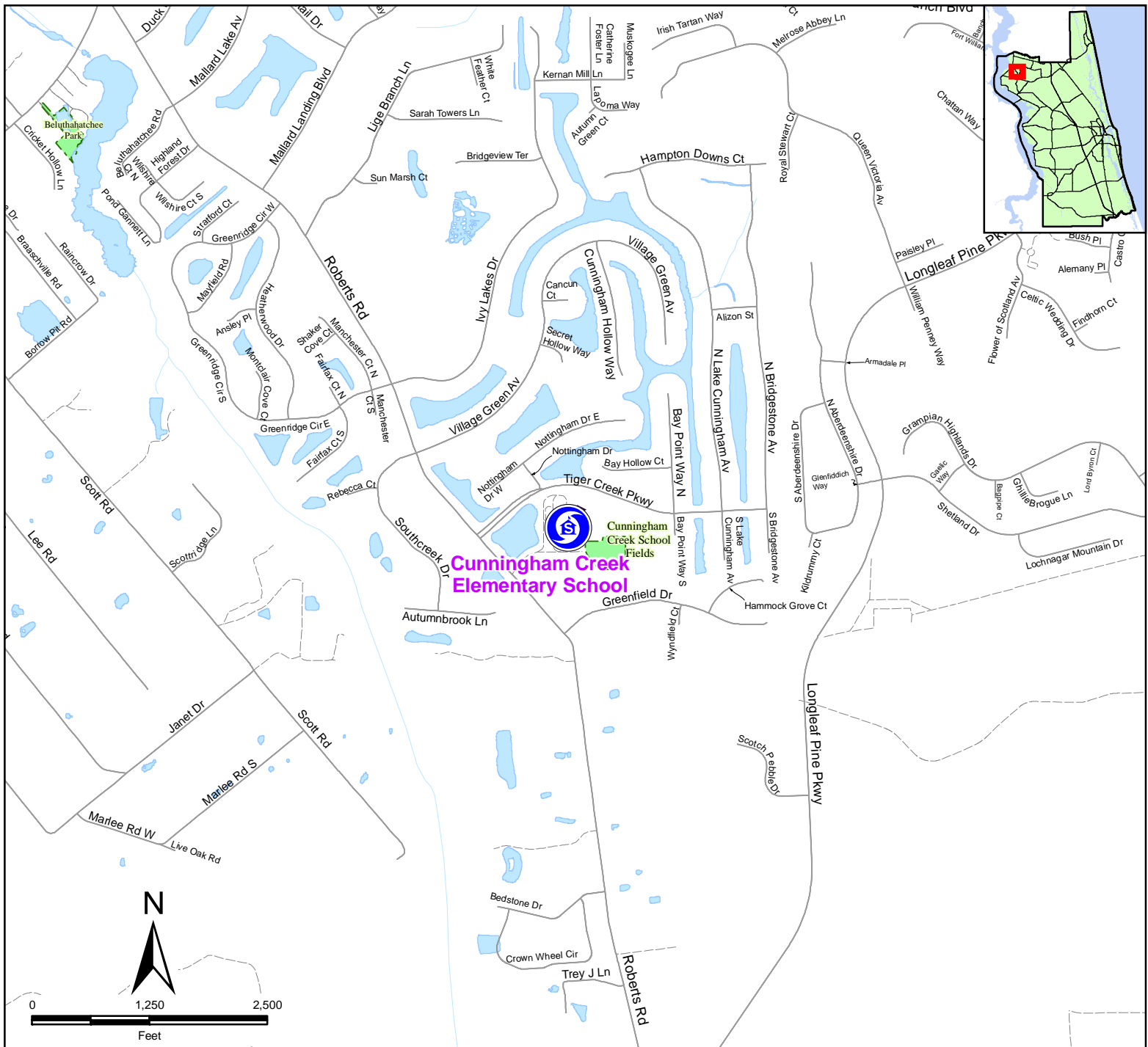


Map Prepared: 5/5/2010

**SHELTER LOCATION**

Durbin Creek Elementary School  
 Address: 4100 Race Track Rd  
 Latitude: 30°06'17.86"  
 Longitude: 81°33'06.93"  
 US National Grid: 17RMP4682330544





**State Road 13 N & Race Track Rd**

Starting at STATE ROAD 13 N and RACE TRACK RD  
 Travel South on STATE ROAD 13 for 2.0 miles  
 Turn Left(East) onto ROBERTS RD  
 Travel South on ROBERTS RD for 1.5 Miles  
 Cunningham Creek Elementary School is located on the Left(East)

**Driving Directions**

**I 95 & County Road 210 W (Exit 329)**

Starting at I 95 and COUNTY ROAD 210 W (EXIT 329)  
 Travel West on COUNTY ROAD 210 W for 5 miles  
 At the intersection of GREENBRIAR RD and COUNTY ROAD 210 W  
 continue West on GREENBRIAR RD for 2.2 miles  
 Turn Right(North) onto LONGLEAF PINE PKWY for 0.4 miles  
 Turn Left(West) on ROBERTS RD for 1.1 miles  
 Cunningham Creek Elementary is located on the Right(East)

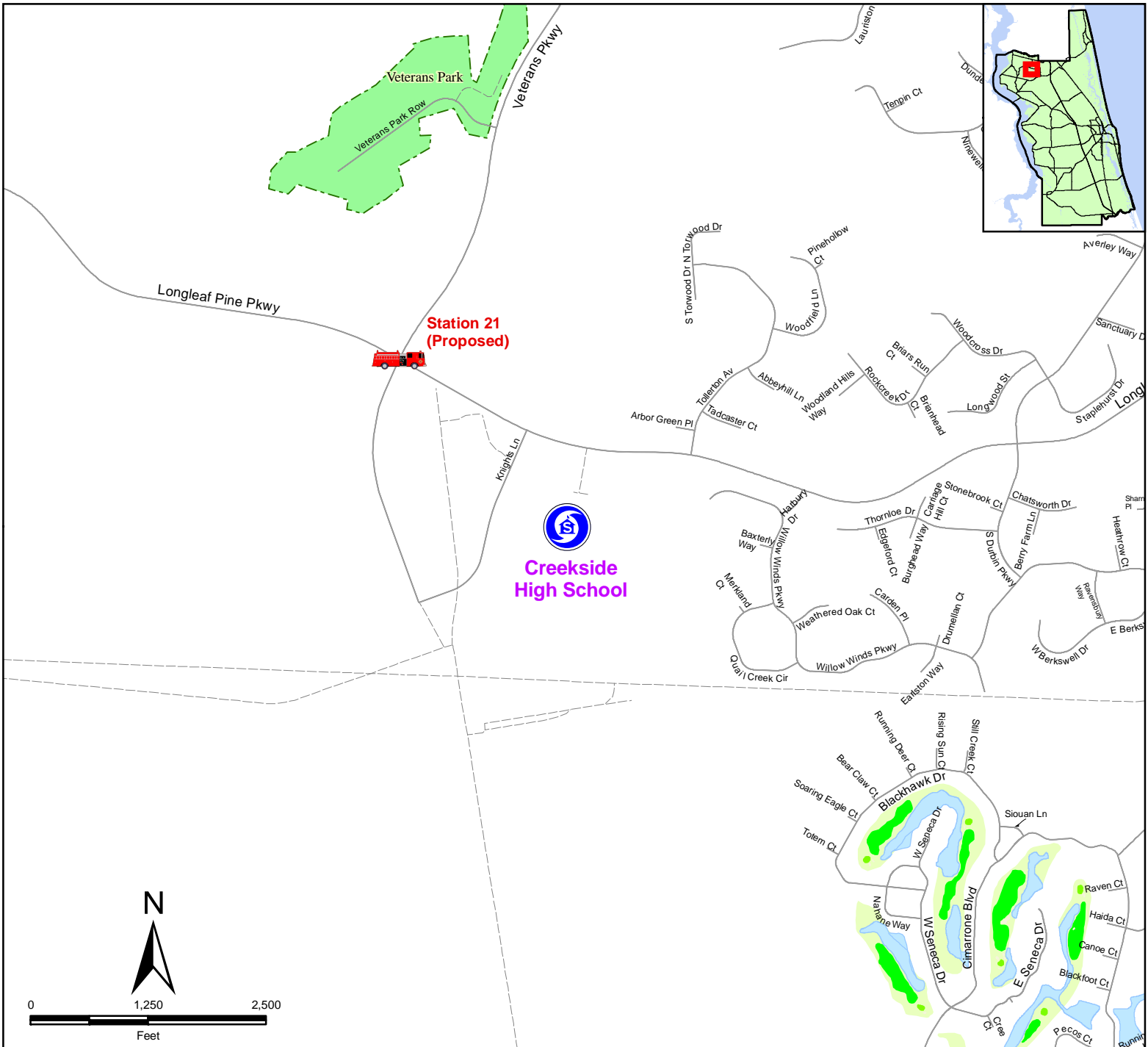


Map Prepared: 5/5/2010

**SHELTER LOCATION**

Cunningham Creek Elementary School  
 Address: 1205 Roberts Rd  
 Latitude: 30°04'36.06"  
 Longitude: 81°36'44.06"  
 US National Grid: 17RMP4099527440





**US 1 N & County Road 210 W**

Starting at US 1 N and COUNTY ROAD 210 W  
 Travel West on COUNTY ROAD 210 W (approx. 5 miles)  
 Turn Right(North) onto ST. JOHNS PARKWAY (approx. 3 miles)  
 Turn Left(West) onto LONGLEAF PINE PARKWAY (approx. 2 miles)  
 Turn Left (South) onto KNIGHTS LANE  
 Creekside High School will be on Left(East)

**Driving Directions**

**State Road 13 N & Race Track Rd**

Starting at State Road 13 N and RACE TRACK RD  
 Travel East on RACE TRACK RD (approx. 4 miles)  
 Turn Right(South) on VETERANS PARKWAY (approx. 1.8 miles)  
 Turn Left (East) onto LONGLEAF PINE PARKWAY (approx. 0.3 miles)  
 Turn RIGHT (South) onto KNIGHTS LANE  
 Creekside High School is on Left(East)



www.SJCFL.us

Map Prepared:5/25/2010

**SHELTER LOCATION**

Creekside High School  
 Address: 100 Knights Ln  
 Latitude: 30°04'46.65"  
 Longitude: 81°33'43.08"

US National Grid: 17RMP4584227741





**State Road 13 N & Race Track Rd**

**Driving Directions**

**I 95 & County Road 210 W(Exit 329)**

Starting at STATE ROAD 13 N and RACE TRACK RD  
 Travel South on STATE ROAD 13 N for 2.0 miles  
 Turn Left(East) onto ROBERTS RD  
 Travel South on ROBERTS RD for 2.6 Miles to LONGLEAF PINE PKWY  
 continue South on LONGLEAF PINE PKWY across GREENBRIAR RD  
 for an additional 0.9 miles  
 Bartram Trail High School is located on the Left(East)

Starting at I 95 and COUNTY ROAD 210 W (EXIT 329)  
 Travel West on COUNTY ROAD 210 W for 5.0 miles  
 At the intersection of GREENBRIAR RD and COUNTY ROAD 210 W  
 continue West on GREENBRIAR RD for 2.2 miles  
 Turn Left(South) onto LONGLEAF PINE PKWY  
 Travel South on LONGLEAF PINE PKWY for 0.6 miles  
 Bartram High School is located on the Left(East)

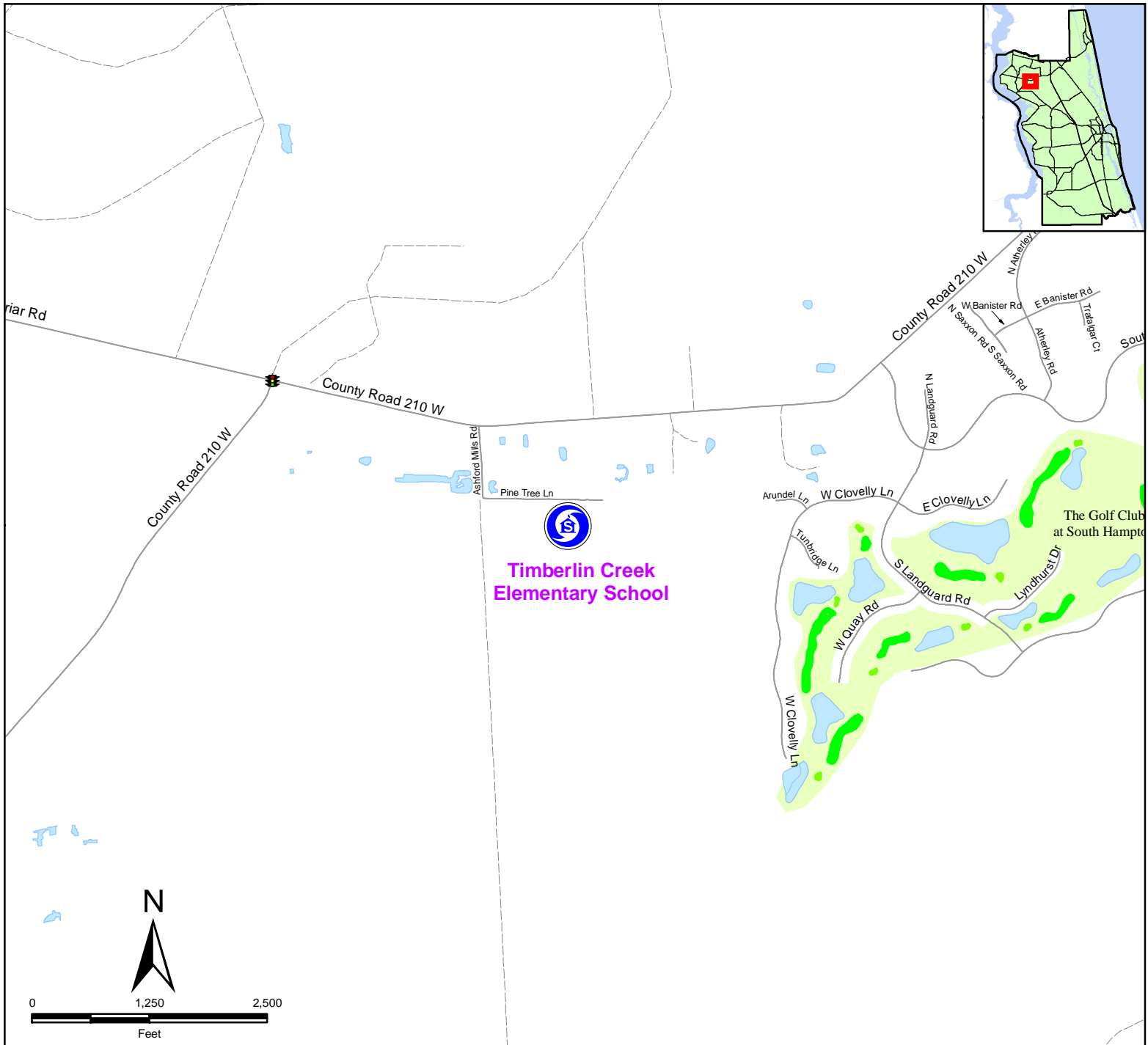


Map Prepared: 5/5/2010

**SHELTER LOCATION**

Bartram Trail High School  
 Address: 7399 Longleaf Pine Pkwy  
 Latitude: 30°02'43.15"  
 Longitude: 81°36'35.43"  
 US National Grid: 17RMP4120823964





**US 1 N & County Road 210 W**

Starting at US 1 N and COUNTY ROAD 210 W  
 Travel West on COUNTY ROAD 210 W (approx. 8 miles)  
 Turn Left(South) on ASHFORD MILLS ROAD (approx. 0.15 miles)  
 Turn Left(East) on PINE TREE LN (approx. 0.15 miles)  
 Timberlin Creek Elementary School will be on Right(South)

**Driving Directions**

**State Road 13 N & Greenbriar Road**

Starting at STATE ROAD 13 N and GREENBRIAR RD  
 Travel East on GREENBRIAR RD (approx. 5.3 miles)  
 At the intersection of GREENBRIAR RD and COUNTY ROAD 210 W  
 continue East on COUNTY ROAD 210 W (approx. 0.4 miles)  
 Turn Right(South) on ASHFORD MILLS RD (approx. 0.15 miles)  
 Turn Left(East) on PINE TREE LN (approx. 0.15 miles)  
 Timberlin Creek Elementary School is on Right(South)



Map Prepared: 5/5/2010

**SHELTER LOCATION**

Timberlin Creek Elementary School  
 Address: 555 Pine Tree Ln  
 Latitude: 30°02'36.67"  
 Longitude: 81°34'03.19"  
 US National Grid: 17RMP4548123766

