

RESOLUTION NO. 2013- 141
RESOLUTION OF THE BOARD OF COUNTY
COMMISSIONERS OF ST. JOHNS COUNTY, FLORIDA
APPROVING A PLAT FOR COASTAL OAKS PHASE 2I UNIT 1

WHEREAS, TOLL JACKSONVILLE LIMITED PARTNERSHIP, , AS OWNER, has applied to the Board of County Commissioners of St. Johns County, Florida for approval to record a plat known as **COASTAL OAKS PHASE 2I UNIT 1.**

NOW, THEREFORE BE IT RESOLVED BY THE BOARD OF COUNTY COMMISSIONERS OF ST. JOHNS COUNTY, FLORIDA, as follows:

Section 1. The above-described subdivision plat and its dedicated areas depicted thereon are conditionally approved and accepted by the Board of County Commissioners of St. Johns County, Florida subject to Sections 2, 3, 4, 5 and 6.

Section 2. A Required Improvement Bond in the amount of \$302,439.75 has been filed with the Clerk of Courts Office.

Section 3. A Required Improvement Bond for in the amount of \$30,807.02 will be required for the installation of the final wearing surface course, upon As-built approval.

Section 4. The approval and acceptance described in Section 1 shall not take effect until the Clerk has received a title opinion, certificate, or policy pertaining to the real property that is the subject of the forenamed subdivision plat which opinion, certificate or policy is in a form acceptable to the County Attorney or Assistant County Attorney.

Section 5. The Clerk is instructed to file and record the consent and joinder (s) to the plat executed by all mortgages identified in the title opinion or certificate of the title in Section 4.

Section 6. The approval and acceptance described in Section 1 shall not take effect until the plat has been signed by each of the following departments, person or offices:

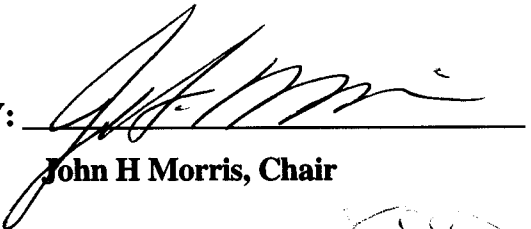
- a) Chairman or Vice-Chairman of the Board of County Commissioners of St. Johns County, Florida;
- b) Office of the County Attorney;

- c) County Growth Management Department;
- d) Office of the County Surveyor; and
- e) Clerk of Courts.

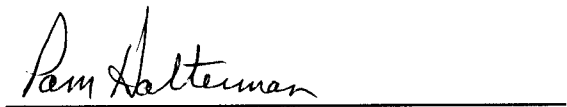
The Clerk shall not sign or accept the Plat for recording until it has been signed by each of the above persons or entities described in a) through d) above. If the plat is not signed and accepted by the Clerk for recording within 14 days from the date hereof, then the above-described conditional approval shall automatically terminate. If the plat is signed by the Clerk on or before such time, the conditions described herein shall be deemed to have been met.

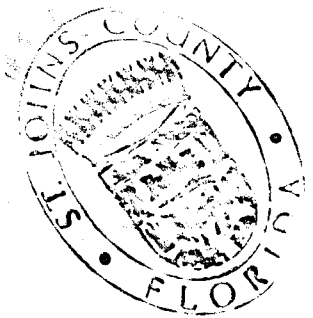
ADOPTED by the Board of County Commissioners of St. Johns County, Florida, this 16 day of July, 2013.

**BOARD OF COUNTY COMMISSIONERS
OF ST. JOHNS COUNTY, FLORIDA**

BY: 
John H Morris, Chair

ATTEST: Cheryl Strickland


Deputy Clerk



RENDITION DATE 7/18/13

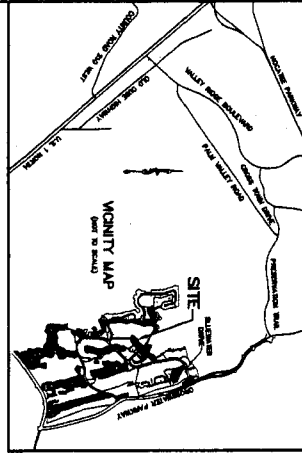
Attachment 2

Plat Map

COASTAL OAKS AT NOCATEE ~ PHASE 21-UNIT 1

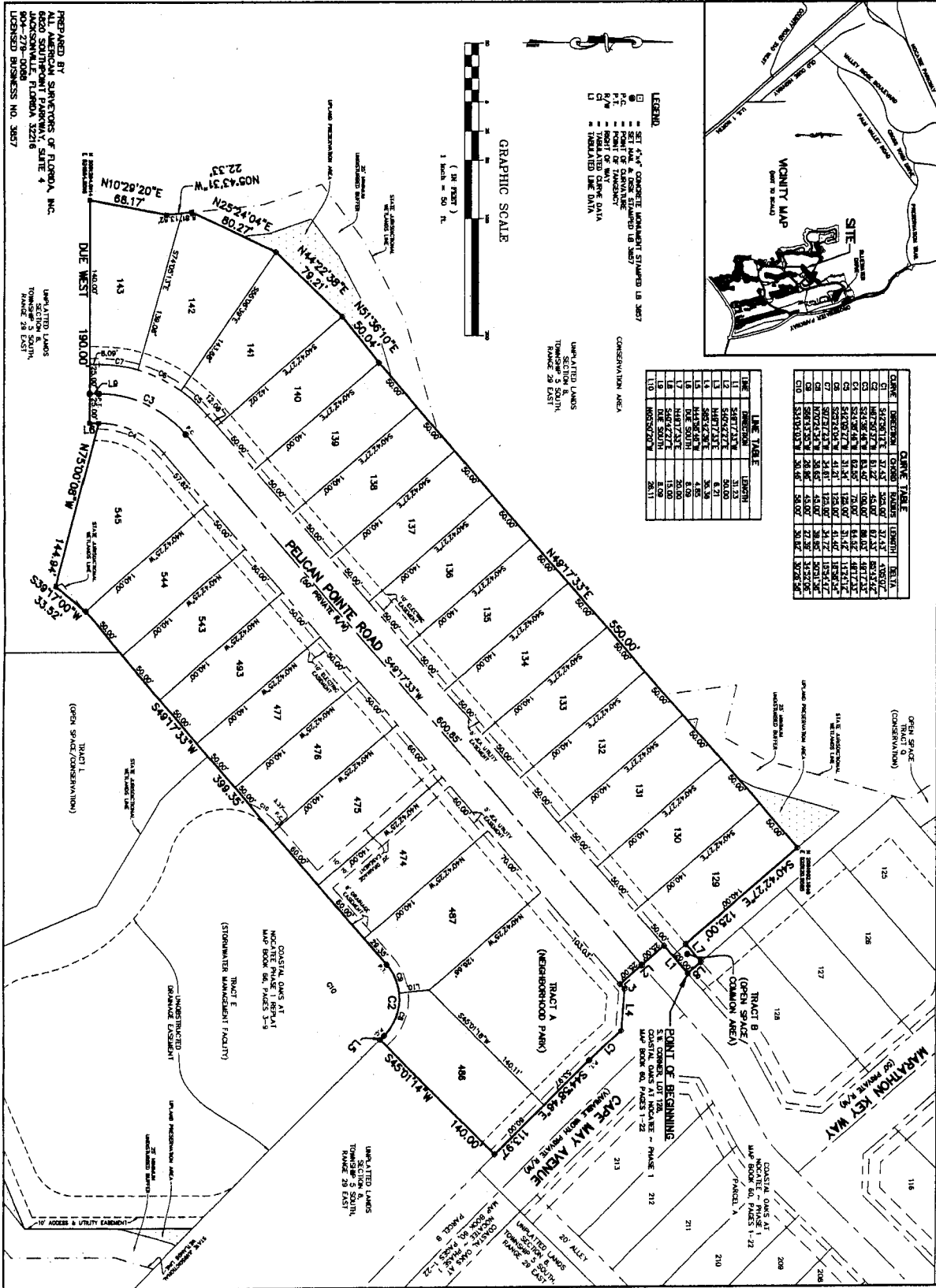
A PORTION OF SECTION 8, TOWNSHIP 5 SOUTH, RANGE 28 EAST, ST. JOHNS COUNTY, FLORIDA

MAP BOOK _____ PAGE _____
SHEET 2 OF 2 SHEETS



LINE	DIRECTION	LENGTH	BEARING	AREA
1	S42°02'12"E	37.47	S24°00'	37.47
2	S81°02'12"E	11.23	S45°00'	11.23
3	S81°02'12"E	6.21	S45°00'	6.21
4	S81°02'12"E	36.39	S45°00'	36.39
5	S42°02'12"E	11.23	S45°00'	11.23
6	S42°02'12"E	37.47	S24°00'	37.47
7	S42°02'12"E	37.47	S24°00'	37.47
8	S42°02'12"E	37.47	S24°00'	37.47
9	S42°02'12"E	37.47	S24°00'	37.47
10	S42°02'12"E	37.47	S24°00'	37.47
11	S42°02'12"E	37.47	S24°00'	37.47
12	S42°02'12"E	37.47	S24°00'	37.47
13	S42°02'12"E	37.47	S24°00'	37.47
14	S42°02'12"E	37.47	S24°00'	37.47
15	S42°02'12"E	37.47	S24°00'	37.47
16	S42°02'12"E	37.47	S24°00'	37.47
17	S42°02'12"E	37.47	S24°00'	37.47
18	S42°02'12"E	37.47	S24°00'	37.47
19	S42°02'12"E	37.47	S24°00'	37.47
20	S42°02'12"E	37.47	S24°00'	37.47
21	S42°02'12"E	37.47	S24°00'	37.47
22	S42°02'12"E	37.47	S24°00'	37.47
23	S42°02'12"E	37.47	S24°00'	37.47
24	S42°02'12"E	37.47	S24°00'	37.47
25	S42°02'12"E	37.47	S24°00'	37.47
26	S42°02'12"E	37.47	S24°00'	37.47
27	S42°02'12"E	37.47	S24°00'	37.47
28	S42°02'12"E	37.47	S24°00'	37.47
29	S42°02'12"E	37.47	S24°00'	37.47
30	S42°02'12"E	37.47	S24°00'	37.47
31	S42°02'12"E	37.47	S24°00'	37.47
32	S42°02'12"E	37.47	S24°00'	37.47
33	S42°02'12"E	37.47	S24°00'	37.47
34	S42°02'12"E	37.47	S24°00'	37.47
35	S42°02'12"E	37.47	S24°00'	37.47
36	S42°02'12"E	37.47	S24°00'	37.47
37	S42°02'12"E	37.47	S24°00'	37.47
38	S42°02'12"E	37.47	S24°00'	37.47
39	S42°02'12"E	37.47	S24°00'	37.47
40	S42°02'12"E	37.47	S24°00'	37.47
41	S42°02'12"E	37.47	S24°00'	37.47
42	S42°02'12"E	37.47	S24°00'	37.47
43	S42°02'12"E	37.47	S24°00'	37.47
44	S42°02'12"E	37.47	S24°00'	37.47
45	S42°02'12"E	37.47	S24°00'	37.47
46	S42°02'12"E	37.47	S24°00'	37.47
47	S42°02'12"E	37.47	S24°00'	37.47
48	S42°02'12"E	37.47	S24°00'	37.47
49	S42°02'12"E	37.47	S24°00'	37.47
50	S42°02'12"E	37.47	S24°00'	37.47
51	S42°02'12"E	37.47	S24°00'	37.47
52	S42°02'12"E	37.47	S24°00'	37.47
53	S42°02'12"E	37.47	S24°00'	37.47
54	S42°02'12"E	37.47	S24°00'	37.47
55	S42°02'12"E	37.47	S24°00'	37.47
56	S42°02'12"E	37.47	S24°00'	37.47
57	S42°02'12"E	37.47	S24°00'	37.47
58	S42°02'12"E	37.47	S24°00'	37.47
59	S42°02'12"E	37.47	S24°00'	37.47
60	S42°02'12"E	37.47	S24°00'	37.47
61	S42°02'12"E	37.47	S24°00'	37.47
62	S42°02'12"E	37.47	S24°00'	37.47
63	S42°02'12"E	37.47	S24°00'	37.47
64	S42°02'12"E	37.47	S24°00'	37.47
65	S42°02'12"E	37.47	S24°00'	37.47
66	S42°02'12"E	37.47	S24°00'	37.47
67	S42°02'12"E	37.47	S24°00'	37.47
68	S42°02'12"E	37.47	S24°00'	37.47
69	S42°02'12"E	37.47	S24°00'	37.47
70	S42°02'12"E	37.47	S24°00'	37.47
71	S42°02'12"E	37.47	S24°00'	37.47
72	S42°02'12"E	37.47	S24°00'	37.47
73	S42°02'12"E	37.47	S24°00'	37.47
74	S42°02'12"E	37.47	S24°00'	37.47
75	S42°02'12"E	37.47	S24°00'	37.47
76	S42°02'12"E	37.47	S24°00'	37.47
77	S42°02'12"E	37.47	S24°00'	37.47
78	S42°02'12"E	37.47	S24°00'	37.47
79	S42°02'12"E	37.47	S24°00'	37.47
80	S42°02'12"E	37.47	S24°00'	37.47
81	S42°02'12"E	37.47	S24°00'	37.47
82	S42°02'12"E	37.47	S24°00'	37.47
83	S42°02'12"E	37.47	S24°00'	37.47
84	S42°02'12"E	37.47	S24°00'	37.47
85	S42°02'12"E	37.47	S24°00'	37.47
86	S42°02'12"E	37.47	S24°00'	37.47
87	S42°02'12"E	37.47	S24°00'	37.47
88	S42°02'12"E	37.47	S24°00'	37.47
89	S42°02'12"E	37.47	S24°00'	37.47
90	S42°02'12"E	37.47	S24°00'	37.47
91	S42°02'12"E	37.47	S24°00'	37.47
92	S42°02'12"E	37.47	S24°00'	37.47
93	S42°02'12"E	37.47	S24°00'	37.47
94	S42°02'12"E	37.47	S24°00'	37.47
95	S42°02'12"E	37.47	S24°00'	37.47
96	S42°02'12"E	37.47	S24°00'	37.47
97	S42°02'12"E	37.47	S24°00'	37.47
98	S42°02'12"E	37.47	S24°00'	37.47
99	S42°02'12"E	37.47	S24°00'	37.47
100	S42°02'12"E	37.47	S24°00'	37.47

- LEGEND**
- SET 4" x 4" CONCRETE UMBILICATOR STAMPED 18 3007
 - SET MARK & AREA ESTIMATED 18 3007
 - POINT OF COMMENCEMENT
 - POINT OF BEGINNING
 - POINT OF END
 - POINT OF INTERSECTION
 - TYPICAL CURVE DATA
 - TYPICAL CURVE DATA
 - TYPICAL CURVE DATA



PREPARED BY
ALL AMERICAN SURVEYORS OF FLORIDA, INC.
1400 SOUTH FLORIDA AVENUE
TALLAHASSEE, FLORIDA 32310
904-278-0000
LICENSED BUSINESS NO. 3807