

RESOLUTION NO. 2013- 259
RESOLUTION OF THE BOARD OF COUNTY
COMMISSIONERS OF ST. JOHNS COUNTY, FLORIDA
APPROVING A PLAT FOR DEERFIELD PRESERVE UNIT ONE-A

WHEREAS, FU-MEI L SHIC, AN INDIVIDUAL, AND FIFTH THIRD BANK, AN OHIO BANKING CORPORATION as “OWNERS” have applied to the Board of County Commissioners of St. Johns County, Florida for approval to record a plat known as **DEERFIELD PRESERVE UNIT ONE-A.**

NOW, THEREFORE BE IT RESOLVED BY THE BOARD OF COUNTY COMMISSIONERS OF ST. JOHNS COUNTY, FLORIDA, as follows:

Section 1. The above-described subdivision plat and its dedicated areas depicted thereon are conditionally approved and accepted by the Board of County Commissioners of St. Johns County, Florida subject to Sections 2, 3, 4, 5 and 6.

Section 2. A Required Improvement Bond in the amount of \$400,200.00 has been filed with the Clerk of Courts Office.

Section 3. A Required Improvement Bond in the amount of \$52,200.00 will be required for the installation of the final wearing surface course, upon As-built approval.

Section 4. The approval and acceptance described in Section 1 shall not take effect until the Clerk has received a title opinion, certificate, or policy pertaining to the real property that is the subject of the forenamed subdivision plat which opinion, certificate or policy is in a form acceptable to the County Attorney or Assistant County Attorney.

Section 5. The Clerk is instructed to file and record the consent and joinder (s) to the plat executed by all mortgages identified in the title opinion or certificate of the title in Section 4.

Section 6. The approval and acceptance described in Section 1 shall not take effect until the plat has been signed by each of the following departments, person or offices:

- a) Chairman or Vice-Chairman of the Board of County Commissioners of St. Johns County, Florida;
- b) Office of the County Attorney;
- c) County Growth Management Department;
- d) Office of the County Surveyor; and
- e) Clerk of Courts.

The Clerk shall not sign or accept the Plat for recording until it has been signed by each of the above persons or entities described in a) through d) above. If the plat is not signed and accepted by the Clerk for recording within 14 days from the date hereof, then the above-described conditional approval shall automatically terminate. If the plat is signed by the Clerk on or before such time, the conditions described herein shall be deemed to have been met.

ADOPTED by the Board of County Commissioners of St. Johns County, Florida, this 3rd day of December, 2013.

**BOARD OF COUNTY COMMISSIONERS
OF ST. JOHNS COUNTY, FLORIDA**

BY: _____

John H Morris
John H Morris, Chair

ATTEST: Cheryl Strickland

Pam Helteman

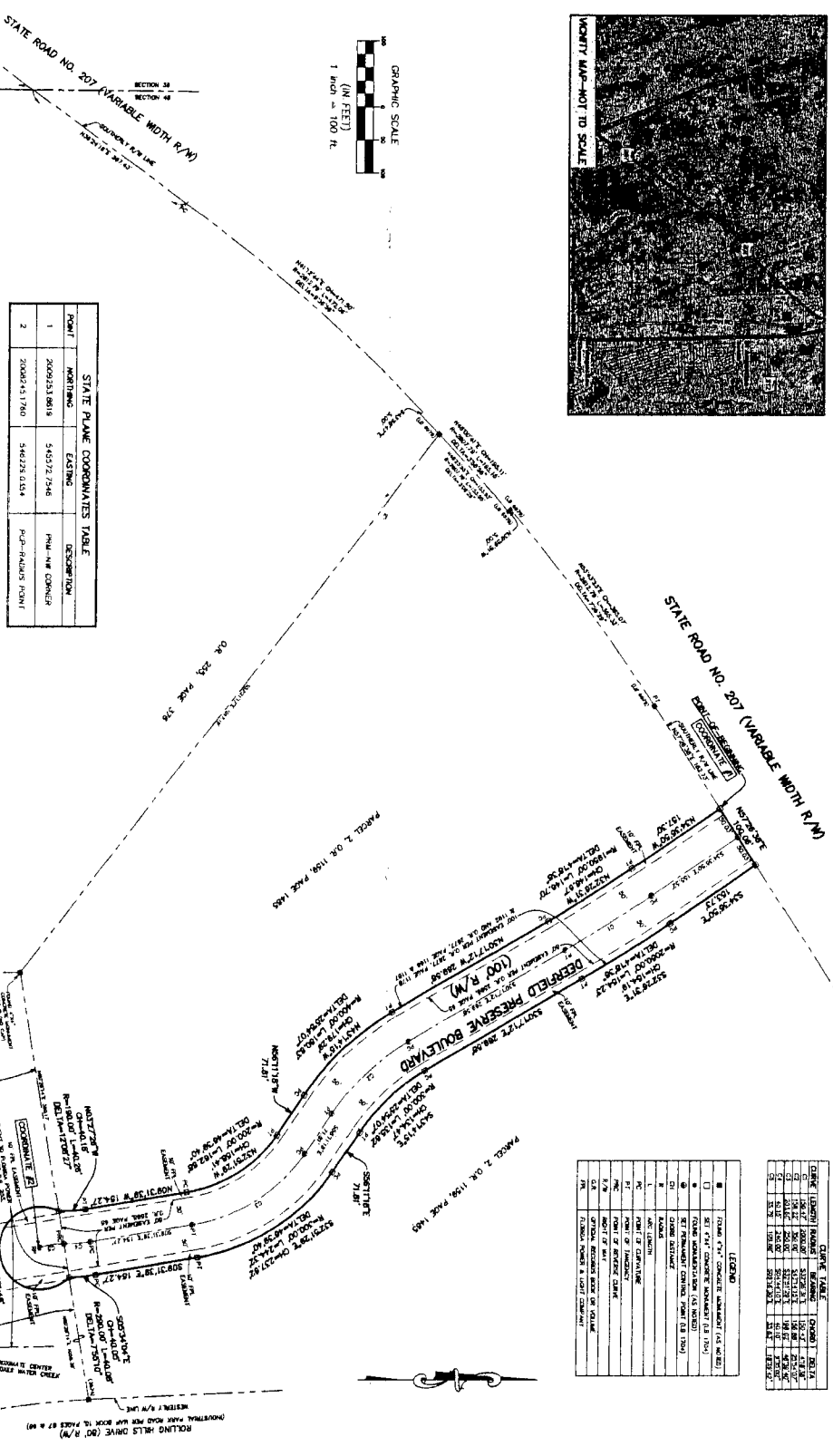
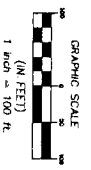
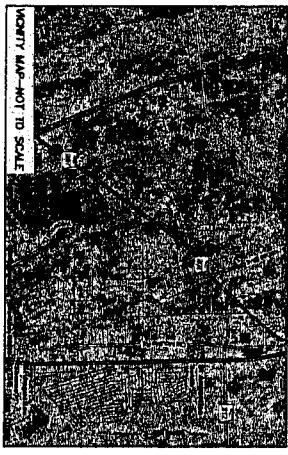
Deputy Clerk

RENDITION DATE 12/5/13



DEERFIELD PRESERVE UNIT ONE-A
 PART OF SECTION 48, TOWNSHIP 7 SOUTH, RANGE 29 EAST, ST. JOHNS COUNTY, FLORIDA

MAP BOOK PAGE
 SHEET 2 OF 2



STATE PLANE COORDINATES TABLE

POINT	NORTHING	EASTING	ELEVATION
1	209933.8818	545372.7548	PAV. AND CONCRETE
2	209925.1790	546228.6154	PAV. AND CONCRETE

NOTES:

1. BEARING REFERENCE BEARINGS AND COORDINATES SHOWN HEREON ARE FOR STATE OF FLORIDA, NORTH OF WAY MARKS.
2. NOTICE: THIS PLAN, AS RECORDED IN THE OFFICIAL RECORDS OF THE PUBLIC RECORDS OF THIS COUNTY, IS THE OFFICIAL DESCRIPTION OF THE SUBMITTED LANDS DESCRIBED HEREIN. THIS PLAN, AS RECORDED IN THE OFFICIAL RECORDS OF THE PUBLIC RECORDS OF THIS COUNTY, IS THE OFFICIAL DESCRIPTION OF THE SUBMITTED LANDS DESCRIBED HEREIN. THIS PLAN, AS RECORDED IN THE OFFICIAL RECORDS OF THE PUBLIC RECORDS OF THIS COUNTY, IS THE OFFICIAL DESCRIPTION OF THE SUBMITTED LANDS DESCRIBED HEREIN.

LEGEND

SYMBOL	DESCRIPTION
(1)	EXISTING ROADWAY
(2)	PROPOSED ROADWAY
(3)	EXISTING LOT
(4)	PROPOSED LOT
(5)	EXISTING CURB
(6)	PROPOSED CURB
(7)	EXISTING SIDEWALK
(8)	PROPOSED SIDEWALK
(9)	EXISTING UTILITY
(10)	PROPOSED UTILITY
(11)	EXISTING FENCE
(12)	PROPOSED FENCE
(13)	EXISTING WATER
(14)	PROPOSED WATER
(15)	EXISTING TREE
(16)	PROPOSED TREE

CARSON & ASSOCIATES, INC.
 PROFESSIONAL LAND SURVEYORS
 1000 W. UNIVERSITY BLVD., SUITE 100
 GAITHERSBURG, MD 20878
 PHONE: (301) 251-2522

Consent #14