

**RESOLUTION NO. 2015- 34**  
**RESOLUTION OF THE BOARD OF COUNTY COMMISSIONERS  
OF ST. JOHNS COUNTY, FLORIDA APPROVING A PLAT  
FOR THE PLANTATION AT PONTE VEDRA UNIT THIRTEEN.**

WHEREAS, ELACORA PLANTATION, LLC, A FLORIDA LIMITED LIABILITY COMPANY, AS OWNER has applied to the Board of County Commissioners of St. Johns County, Florida for approval to record a plat known as The Plantation at Ponte Vedra Unit Thirteen .

NOW, THEREFORE BE IT RESOLVED BY THE BOARD OF COUNTY COMMISSIONERS OF ST. JOHNS COUNTY, FLORIDA, as follows:

**Section 1.** The above-described subdivision plat and its dedicated areas depicted thereon are conditionally approved and accepted by the Board of County Commissioners of St. Johns County, Florida subject to Sections 2, 3, 4, 5 and 6.

**Section 2.** A Required Improvements Bond in the amount of \$506,282.90 has been filed with the Clerks office.

**Section 3.** A Required Improvements Bond in the amount of \$66,036.90 will be required for maintenance.

**Section 4.** The approval and acceptance described in Section 1 shall not take effect until the Clerk has received a title opinion, certificate, or policy pertaining to the real property that is the subject of the aforementioned subdivision plat which opinion, certificate or policy is in a form acceptable to the County Attorney or Assistant County Attorney.

**Section 5.** The Clerk is instructed to file and record the consent and joinder (s) to the plat executed by all mortgages identified in the title opinion or certificate of the title in Section 4.

**Section 6.** The approval and acceptance described in Section 1 shall not take effect until the plat has been signed by each of the following departments, person or offices:

- a) Chairman or Vice-Chairman of the Board of County Commissioners of St. Johns County, Florida;
- b) Office of the County Attorney;
- c) County Growth Management Department;

- d) Office of the County Surveyor; and
- e) Clerk of Courts.


The Clerk shall not sign or accept the Plat for recording until it has been signed by each of the above persons or entities described in a) through d) above. If the plat is not signed and accepted by the Clerk for recording within 14 days from the date hereof, then the above-described conditional approval shall automatically terminate. If the plat is signed by the Clerk on or before such time, the conditions described herein shall be deemed to have been met.

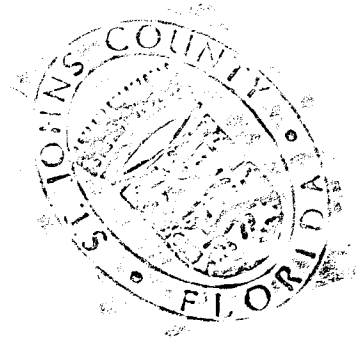
**ADOPTED** by the Board of County Commissioners of St. Johns County, Florida, this 17<sup>th</sup> day of February, 2015.

**BOARD OF COUNTY COMMISSIONERS  
OF ST. JOHNS COUNTY, FLORIDA**

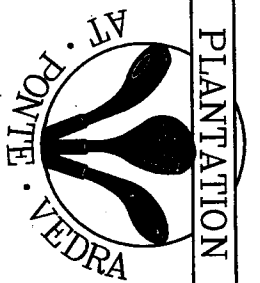
BY:   
Priscilla L. Bennett, Chair

**ATTEST:** Cheryl Strickland

  
Deputy Clerk



**RENDITION DATE** 2/19/15



**UNIT THIRTEEN**

A Portion of Sections 10 and 15, Township 4 South,  
Range 29 East, St. Johns County, Florida.

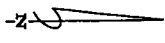
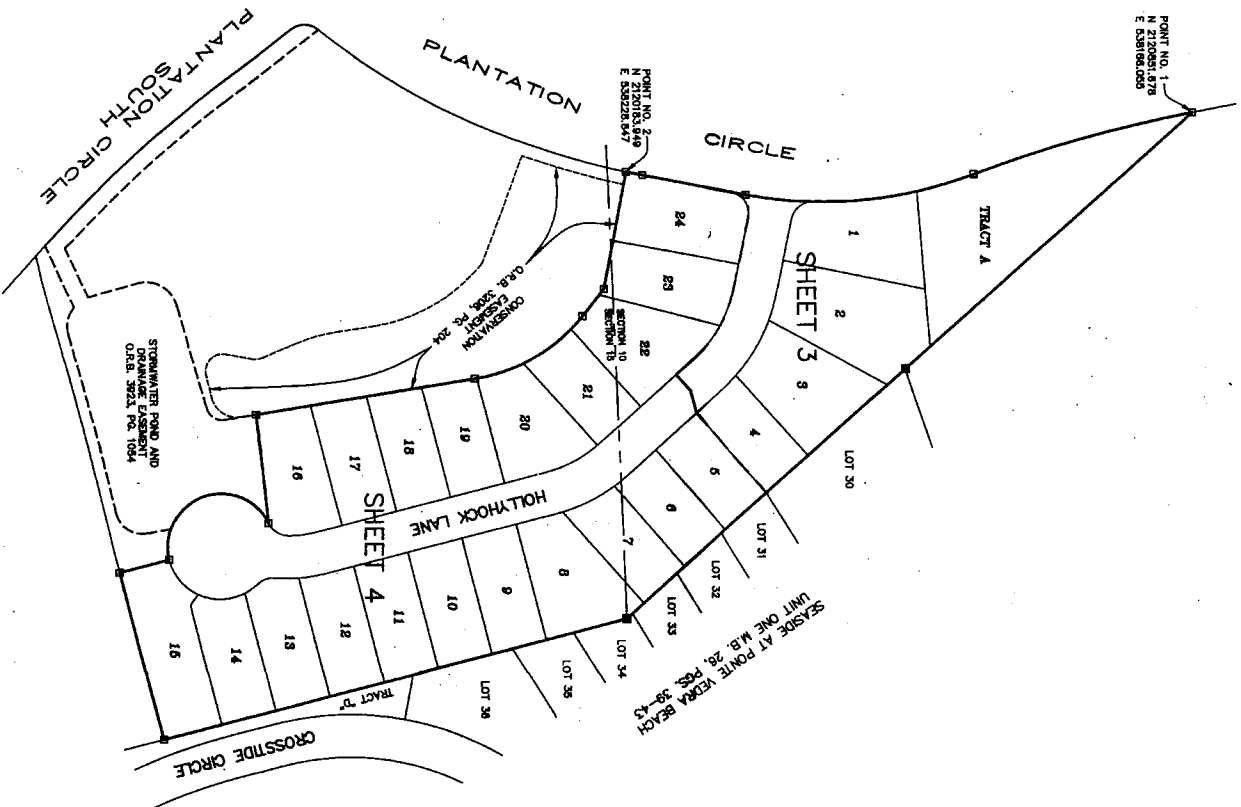
SHEET 2 OF 4 SHEETS  
24 LOTS AND 1 TRACT IN THIS UNIT



VICINITY MAP  
NOT TO SCALE

THE LANDS SHOWN HEREON ARE SUBJECT TO THE FOLLOWING:  
O.R.B. 3281, PG. 1531 EASEMENT

- Legend**
- R/W RIGHT-OF-WAY
  - PLG(S) PLANTING
  - ESL EASEMENT
  - CON CONVEYANCE
  - P.C. POINT OF COMMENCEMENT
  - P.R.C. POINT OF REVERSE CURVATURE
  - P.C.C. POINT OF COMPOUND CURVATURE
  - RADIUS
  - CH CHORD
  - TA TABLED CURVE DATA
  - FO FOUND
  - MON MONUMENT
  - UN UNRESTRICTED DRAINAGE EASEMENT
  - BE BEAKERS ENERGY SERVICES
  - RES RESERVATION TO ENERGY POINT
  - ST STAMPED P.C.2 LB 3729
  - PER PERMANENT REFERENCE MONUMENT
  - PER PERMANENT REFERENCE MONUMENT
  - W/1/2" L.P. NO IDENTIFICATION



POINT NO. 1  
N 2120891.878  
E 6381068.000

SECTION 10  
SECTION 15  
SECTION 16  
SECTION 17  
SECTION 18  
SECTION 19  
SECTION 20  
SECTION 21  
SECTION 22  
SECTION 23  
SECTION 24

STORMWATER POND AND  
DRAINAGE EASEMENT  
O.R.B. 3023, PG. 1054

**General Notes**

1. BEARINGS SHOWN HEREON ARE BASED ON THE EASTRELY R/W LINE OF PLANTATION CIRCLE AS SHOWN.
2. THE METHOD OF USE OF THESE COORDINATES IS FOR GAS BASE MAPPING PURPOSES. THE GEODETIC CONTROL NEARED UPON FOR THESE VALUES WAS PUBLISHED UNDER THE TITLE "NATIONAL PLANETARY DATUM" AND IS BASED ON THE NORTH AMERICAN DATUM 1983/1980 - STATE PLANE COORDINATES - FLORIDA EAST ZONE - (U.S. FEET).
3. NOTES: THE PLAT AS RECORDED IN ITS ORIGINAL FORM IS THE ORIGINAL DEPOSITION OF THE SUBDIVIDED LANDS DESCRIBED HEREON AND WILL IN NO CIRCUMSTANCES BE SUPERSEDED IN AUTHORITY BY ANY OTHER GRADING OR DIGITAL FORM OF THE PLAT. THESE LOTS MAY BE FOUND IN THE PUBLIC RECORDS OF THIS COUNTY (FLORIDA STATUTE 177.001).
4. BEARINGS AND DISTANCES SHOWN ON CURVES REFER TO CHORD BEARINGS AND DISTANCES.
5. THE TABLED CURVE TABLES SHOWN ON EACH SHEET IS APPLICABLE ONLY TO THE CURVES THAT APPEAR ON THAT SHEET.
6. ALL PLATTED UTILITY EASEMENTS SHALL ALSO BE EASEMENTS FOR THE CONSTRUCTION, INSTALLATION, MAINTENANCE, AND OPERATION OF CABLE TELEVISION SERVICES PROVIDED HOWEVER, NO SUCH CONSTRUCTION, INSTALLATION, MAINTENANCE, OR OPERATION SHALL INTERFERE WITH THE FACILITIES AND SERVICES OF AN ELECTRIC, TELEPHONE, GAS, OR OTHER PUBLIC UTILITY.
7. THESE EASEMENTS EXEMPTED AS BEST UTILITY EASEMENT ARE HEREBY IRREVOCABLY AND WITHOUT RESERVATION DELEGATED TO THE CITY OF JACKSONVILLE BEACH, D/B/A BEAKERS ENERGY SERVICES, ITS SUCCESSORS AND ASSIGNS, FOR ITS NON-EXCLUSIVE USE IN CONNECTION WITH ITS UNDERGROUND ELECTRIC SYSTEM.

POINT NUMBER	EASTING	NORTHING	CORNER
1	2120891.878	6381068.000	TRACT A AT POINT OF BEGINNING
2	2120103.948	6382264.877	TRACT A AT POINT OF BEGINNING

