

RESOLUTION NO. 2017 - 243

A RESOLUTION OF THE BOARD OF COUNTY COMMISSIONERS OF ST. JOHNS COUNTY, FLORIDA, AMENDING THE FISCAL YEAR 2017 COUNTY CULTURAL CENTER FUND BUDGET TO RECEIVE UNANTICIPATED REVENUE AND AUTHORIZE ITS EXPENDITURE BY THE ST. JOHNS COUNTY CULTURAL EVENTS DIVISION.

WHEREAS, St. Johns County has a Cultural Events Division which operates through a Special Revenue Fund budget funded primarily by the collection of fees; and

WHEREAS, the County has received a donation from the Friends of the Ponte Vedra Concert Hall for the purpose of constructing a deck attached to the Ponte Vedra Concert Hall building; and

WHEREAS, St. Johns County, Florida, when preparing its budget for Fiscal Year 2017, did not anticipate revenue from this donor; and

WHEREAS, the revenue of \$50,000 is intended to be used for expenses associated with improvements for Ponte Verdra Concert Hall.

NOW THEREFORE, BE IT RESOLVED by the Board of County Commissioners of St. Johns County, Florida, that:

1. The above recitals are hereby adopted as legislative findings of fact and incorporated herein.
2. The County Cultural Center Fund revenue and expenditure budgets shall be adjusted to account for unanticipated revenue from donations in the amount of \$50,000 for Fiscal Year 2017.
3. Such funds shall be appropriated to the Cultural Events Department for payment of expenses associated with Fiscal Year 2017 improvements.
4. To the extent that there are scriveners, typographical or administrative errors that do not change the tone, tenor, or concept of this Resolution, then this Resolution may be revised without subsequent approval by the Board of County Commissioners.

PASSED AND ADOPTED by the Board of County Commissioners of St. Johns County, State of Florida, this 18th day of July 2017.

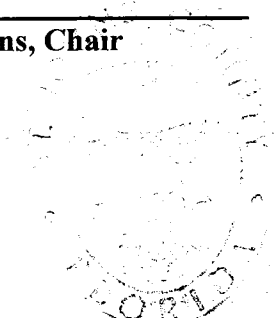
**BOARD OF COUNTY COMMISSIONERS
OF ST. JOHNS COUNTY, FLORIDA**

By: _____
James K. Johns, Chair

ATTEST
By: _____

Hunter S. Conrad
Hunter S. Conrad, Clerk

RENDITION DATE 7/20/17



THE FRIENDS OF
PONTE ★ VEDRA
CONCERT HALL

June 6, 2017

VIA E-MAIL: rmurphy@sjcfl.us

Mr. Ryan Murphy
St. Johns County Cultural Events Division

Re: Funding for the Construction of an Outdoor Deck on the Concert Hall

Dear Ryan:

The Friends of the Ponte Vedra Concert Hall, Inc. has committed **\$50,000.00** to fund the construction of an outdoor deck of approximately 690 square feet to be added to the existing concert hall facility. We believe that this project will enhance the utility and enjoyment of the concert hall by everyone who attends events there. This will be the fourth project funded by the Friends of the Concert Hall to improve and enhance the concert hall facility. Previous projects included a portable dance floor that could be used in connection with private rentals of the concert hall as well as county-sponsored events, a grand piano for the concert hall lounge area, and furnishings and décor for the concert hall “green room” and dressing rooms.

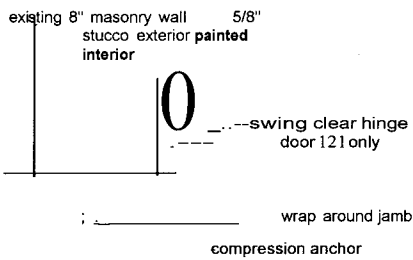
The Friends of the Concert Hall was formed over five years ago to improve the appearance, functioning and operation of the Ponte Vedra Concert Hall. We will continue to suggest and consider additional projects that will make the concert hall an even better venue for the performing arts, and appreciate the opportunity to partner with St. Johns County in that effort.

Very truly yours,

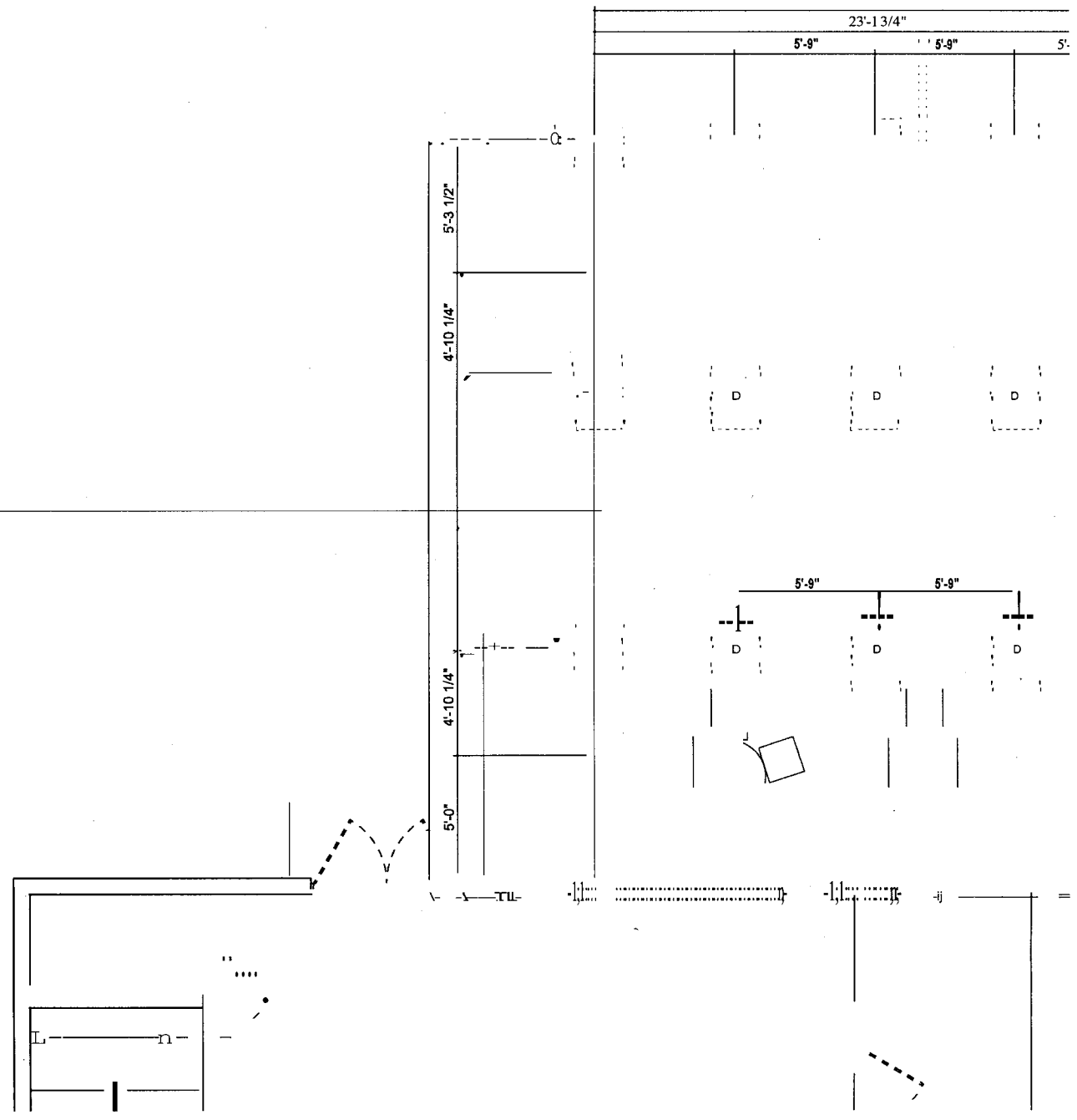
Steve Gard, President
Friends of the Ponte Vedra Concert Hall, Inc.

PV Concert Hall Deck

Description	Quantity	Unit	Unit Cost	Labor	Subtotal
Outdoor deck					
Permit Fees/Insurance	1	each	500	0	\$500.00
General Conditions	1	each	1000	0	\$1,000.00
Clearing and Grubbing	1	each	500	0	\$500.00
Demolition	1	each	2500	0	\$2,500.00
Insert new header opening	1	each	3500	0	\$3,500.00
new exterior door 6068	1	each	3500	1800	\$5,300.00
Concrete, 2500 psi for footings	4	cuyd	120	0	\$480.00
Concrete Pump truck	3.00	hours	175	0	\$525.00
p.t. 4x4 post @ 8'-0", 0.40 ACQ	20.00	each	9.56	0	\$191.20
Post footing (dig and pour)	24	each	0	100	\$2,400.00
p.t. 2x2 @42" spindles	284	each	2.5	0	\$710.00
p.t. 2x4 @ 12'-0", 0.20 ACQ	22	each	6.17	0	\$135.74
p.t. 2x6 deck boards @ 12', 0.20 ACQ	90	each	7.87	0	\$708.30
p.t. 2x12 @ 10'-0", 0.20 ACQ	76.00	each	21.27	0	\$1,616.52
p.t. 2x10 @ 14'-0", 0.20 ACQ	8.00	each	25.52	0	\$204.16
Simpson Connectors	1.00	each	1500	0	\$1,500.00
1/2" stainless steel thru bolt with nut and washer	46.00	each	0.5	0	\$23.00
Stainless Steel #8 x 2 1/2" deck screws	4.00	box	192	0	\$768.00
Deck Labor	987.00	sf		15	\$14,805.00
Contingency 10%	1.00	each			\$2,256.19
Overhead and profit 15%	1.00	each			\$5,943.47
Tax					\$2,733.99
Total					\$48,300.57



A JAMB DETAIL
 SCALE: 1 1/2" = 1'-0"



Cultural Events: Fifteen Year Pro Forma on Proposed PVCH Deck

	Year 1	Year 2	Year 3	Year 4	Year 5	Year 6	Year 7	Year 8	Year 9	Year 10	Year 11	Year 12	Year 13	Year 14	Year 15
Initial Sponsorship Revenue	\$ 50,000														
Food & Beverage Revenue	\$ 2,292	\$ 27,500	\$ 27,500	\$ 27,500	\$ 27,500	\$ 27,500	\$ 27,500	\$ 27,500	\$ 27,500	\$ 27,500	\$ 27,500	\$ 27,500	\$ 27,500	\$ 27,500	\$ 27,500
Total Revenue	\$ 52,292	\$ 27,500	\$ 27,500	\$ 27,500	\$ 27,500	\$ 27,500	\$ 27,500	\$ 27,500	\$ 27,500	\$ 27,500	\$ 27,500	\$ 27,500	\$ 27,500	\$ 27,500	\$ 27,500
Construction	\$ 48,301														
Annual Maintenance	\$ 1,017	\$ 1,017	\$ 1,017	\$ 1,017	\$ 1,017	\$ 1,017	\$ 1,017	\$ 1,017	\$ 1,017	\$ 1,017	\$ 1,017	\$ 1,017	\$ 1,017	\$ 1,017	\$ 1,017
Demolition															\$ 1,275
Total Expense	\$ 48,301	\$ 1,017	\$ 1,017	\$ 1,017	\$ 1,017	\$ 1,017	\$ 1,017	\$ 1,017	\$ 1,017	\$ 1,017	\$ 1,017	\$ 1,017	\$ 1,017	\$ 1,017	\$ 2,292
Annual Net Position	\$ 3,991	\$ 26,483	\$ 26,483	\$ 26,483	\$ 26,483	\$ 26,483	\$ 26,483	\$ 26,483	\$ 26,483	\$ 26,483	\$ 26,483	\$ 26,483	\$ 26,483	\$ 26,483	\$ 25,208
Cumulative Net Position	\$ 3,991	\$ 30,474	\$ 56,956	\$ 83,439	\$ 109,921	\$ 136,404	\$ 162,886	\$ 189,369	\$ 215,851	\$ 242,334	\$ 268,816	\$ 295,299	\$ 321,781	\$ 348,264	\$ 373,471