

**RESOLUTION NO. 2017- 47**  
**RESOLUTION OF THE BOARD OF COUNTY COMMISSIONERS**  
**OF ST. JOHNS COUNTY, FLORIDA APPROVING A PLAT FOR**  
**MILLER'S PLACE**

**WHEREAS, DON MARKRAM BRINDLEY, AS OWNER** has applied to the Board of County Commissioners of St. Johns County, Florida for approval to record a plat known as Miller's Place.

**NOW, THEREFORE BE IT RESOLVED BY THE BOARD OF COUNTY COMMISSIONERS OF ST. JOHNS COUNTY, FLORIDA,** as follows:

**Section 1.** The above-described subdivision plat and its dedicated areas depicted thereon are conditionally approved and accepted by the Board of County Commissioners of St. Johns County, Florida subject to Sections 2, 3, 4, 5 and 6.

**Section 2.** A Required Improvements Bond for construction is not required.

**Section 3.** A Required Improvements Bond for maintenance is not required.

**Section 4.** The approval and acceptance described in Section 1 shall not take effect until the Clerk has received a title opinion, certificate, or policy pertaining to the real property that is the subject of the aforementioned subdivision plat which opinion, certificate or policy is in a form acceptable to the County Attorney or Assistant County Attorney.

**Section 5.** The Clerk is instructed to file and record the consent and joinder (s) to the plat executed by all mortgages identified in the title opinion or certificate of the title in Section 4.

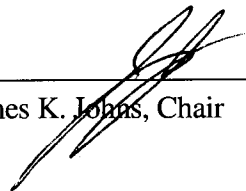
**Section 6.** The approval and acceptance described in Section 1 shall not take effect until the plat has been signed by each of the following departments, person or offices:

- a) Chairman or Vice-Chairman of the Board of County Commissioners of St. Johns County, Florida;
- b) Office of the County Attorney;
- c) County Growth Management Department;
- d) Office of the County Surveyor; and
- e) Clerk of Courts.

The Clerk shall not sign or accept the Plat for recording until it has been signed by each of the above persons or entities described in a) through d) above. If the plat is not signed and accepted by the Clerk for recording within 14 days from the date hereof, then the above-described conditional approval shall automatically terminate. If the plat is signed by the Clerk on or before such time, the conditions described herein shall be deemed to have been met.

ADOPTED by the Board of County Commissioners of St. Johns County, Florida, this 21<sup>st</sup> day of February, 2017.

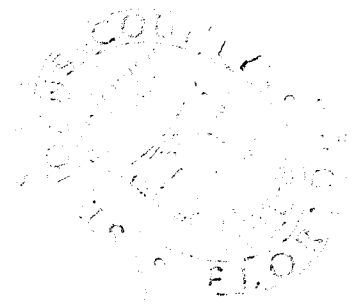
**BOARD OF COUNTY COMMISSIONERS  
OF ST. JOHNS COUNTY, FLORIDA**

BY:   
James K. Johns, Chair

ATTEST: Hunter S. Conrad, Clerk



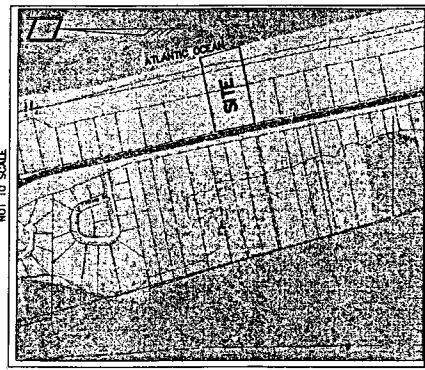
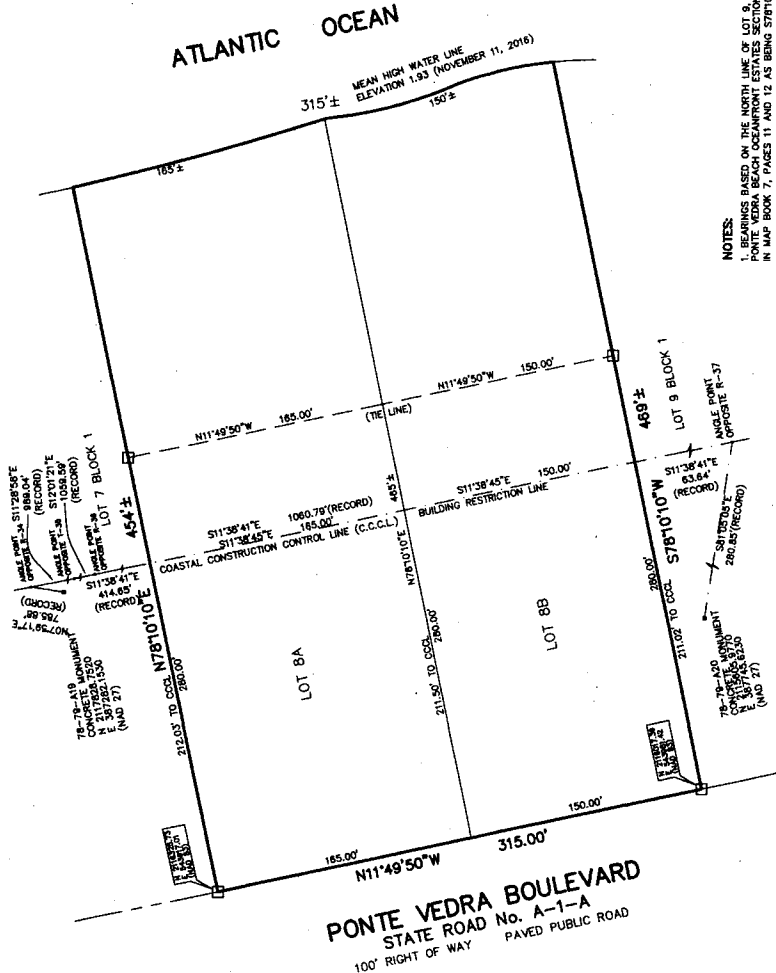
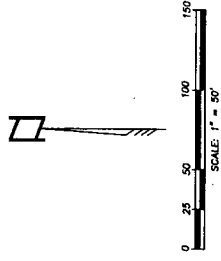
Deputy Clerk



RENDITION DATE 2/23/17

# MILLER'S PLACE

A PART OF GOVERNMENT LOTS 2 AND 3, SECTION 14,  
TOWNSHIP 4 SOUTH, RANGE 29 EAST, ST. JOHNS COUNTY, FLORIDA  
BEING A REPLAT OF ALL OF LOT 8, BLOCK 1, PONTE VEDRA BEACH OCEANFRONT  
ESTATES SECTION, AS RECORDED IN MAP BOOK 7, PAGES 11 AND 12,  
OF THE PUBLIC RECORDS OF ST. JOHNS COUNTY, FLORIDA.



- NOTES:**
1. BEARINGS BASED ON THE NORTH LINE OF LOT 9, BLOCK 1, PONTE VEDRA BEACH OCEANFRONT ESTATES SECTION, AS RECORDED IN MAP BOOK 7, PAGES 11 AND 12 AS BEING S79°10'10\"/>
  2. NOTICE: THIS PLAT, AS RECORDED IN ITS GRAPHIC FORM, IS THE ORIGINAL AS SHOWN ON THE SURVEY LOTS DESCRIBED HEREIN AND WILL IN NO CIRCUMSTANCES BE SUBJECT TO ANY REVISION OR OTHER GRAPHIC OR DIGITAL FORM OF THE PLAT. THERE MAY BE REVISIONS TO THE PLAT AS RECORDED ON THIS PLAT THAT MAY BE FOUND IN THE PUBLIC RECORDS OF THIS COUNTY.
  3. THE COORDINATES SHOWN HEREON ARE IN N.A.D. 1983 DATUM (NAD 83). THE COORDINATE VALUES SHOWN ON THIS PLAT AND TRIMBLE VRS SOFTWARE, THE COORDINATE VALUES SHOWN DO NOT CORRESPOND WITH THE BEARINGS SHOWN HEREON.
  4. THE LANDS DESCRIBED HEREON IN THE CAPTION CONTAIN 3.4 ± ACRES.
  5. THE CURRENT COASTAL CONSTRUCTION CONTROL LINE IS RECORDED IN COASTAL CONSTRUCTION BOOK 8B, ST. JOHNS COUNTY, RECORDED JANUARY 28, 1988.
  6. MEAN HIGH WATER LINE (MHW) DETERMINED USING EXTENDED DATUM FOR TIDE STATION 100072 (MILLER LANDING, MHW = 1.93 (NAVD 1988), TIDE RANGE = 4.91').

**LEGEND**

□ DENOTES PERMANENT REFERENCE MONUMENT, SET  
4' x 4' CONCRETE MONUMENT, STAMPED LB 3872

PREPARED BY:  
T. J. ROBERTS SURVEYORS, INC.  
1500 ROBERTS DRIVE  
PONTE VEDRA BEACH, FLORIDA  
(904) 241-8200