

RESOLUTION NO. 2018- 128
RESOLUTION OF THE BOARD OF COUNTY COMMISSIONERS
OF ST. JOHNS COUNTY, FLORIDA APPROVING A PLAT FOR
COASTAL VILLAGE.

WHEREAS, COASTAL VILLAGE SJC, LLC, A FLORIDA LIMITED LIABILITY COMPANY AS OWNER have applied to the Board of County Commissioners of St. Johns County, Florida for approval to record a plat known as Coastal Village.

NOW, THEREFORE BE IT RESOLVED BY THE BOARD OF COUNTY COMMISSIONERS OF ST. JOHNS COUNTY, FLORIDA, as follows:

Section 1. The above-described subdivision plat and its dedicated areas depicted thereon are conditionally approved and accepted by the Board of County Commissioners of St. Johns County, Florida subject to Sections 2, 3, 4, 5 and 6.

Section 2. A Required Improvements Bond for construction in the amount of \$77,760.00 has been filed with the Clerk's Office.

Section 3. A Required Improvements Bond in the amount of \$63,732.00 will be required for maintenance.

Section 4. The approval and acceptance described in Section 1 shall not take effect until the Clerk has received a title opinion, certificate, or policy pertaining to the real property that is the subject of the aforementioned subdivision plat which opinion, certificate or policy is in a form acceptable to the County Attorney or Assistant County Attorney.

Section 5. The Clerk is instructed to file and record the consent and joinder (s) to the plat executed by all mortgages identified in the title opinion or certificate of the title in Section 4.

Section 6. The approval and acceptance described in Section 1 shall not take effect until the plat has been signed by each of the following departments, person or offices:

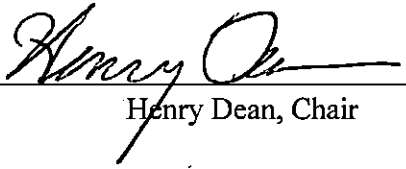
- a) Chairman or Vice-Chairman of the Board of County Commissioners of St. Johns County, Florida;
- b) Office of the County Attorney;
- c) County Growth Management Department;
- d) Office of the County Surveyor; and
- e) Clerk of Courts.

The Clerk shall not sign or accept the Plat for recording until it has been signed by each of the above persons or entities described in a) through d) above. If the plat is not signed and accepted by the Clerk for recording within 14 days from the date hereof, then the above-described conditional approval shall


automatically terminate. If the plat is signed by the Clerk on or before such time, the conditions described herein shall be deemed to have been met.

ADOPTED by the Board of County Commissioners of St. Johns County, Florida, this 15 day of May, 2018.

**BOARD OF COUNTY COMMISSIONERS
OF ST. JOHNS COUNTY, FLORIDA**

BY: 
Henry Dean, Chair

ATTEST: Hunter S. Conrad

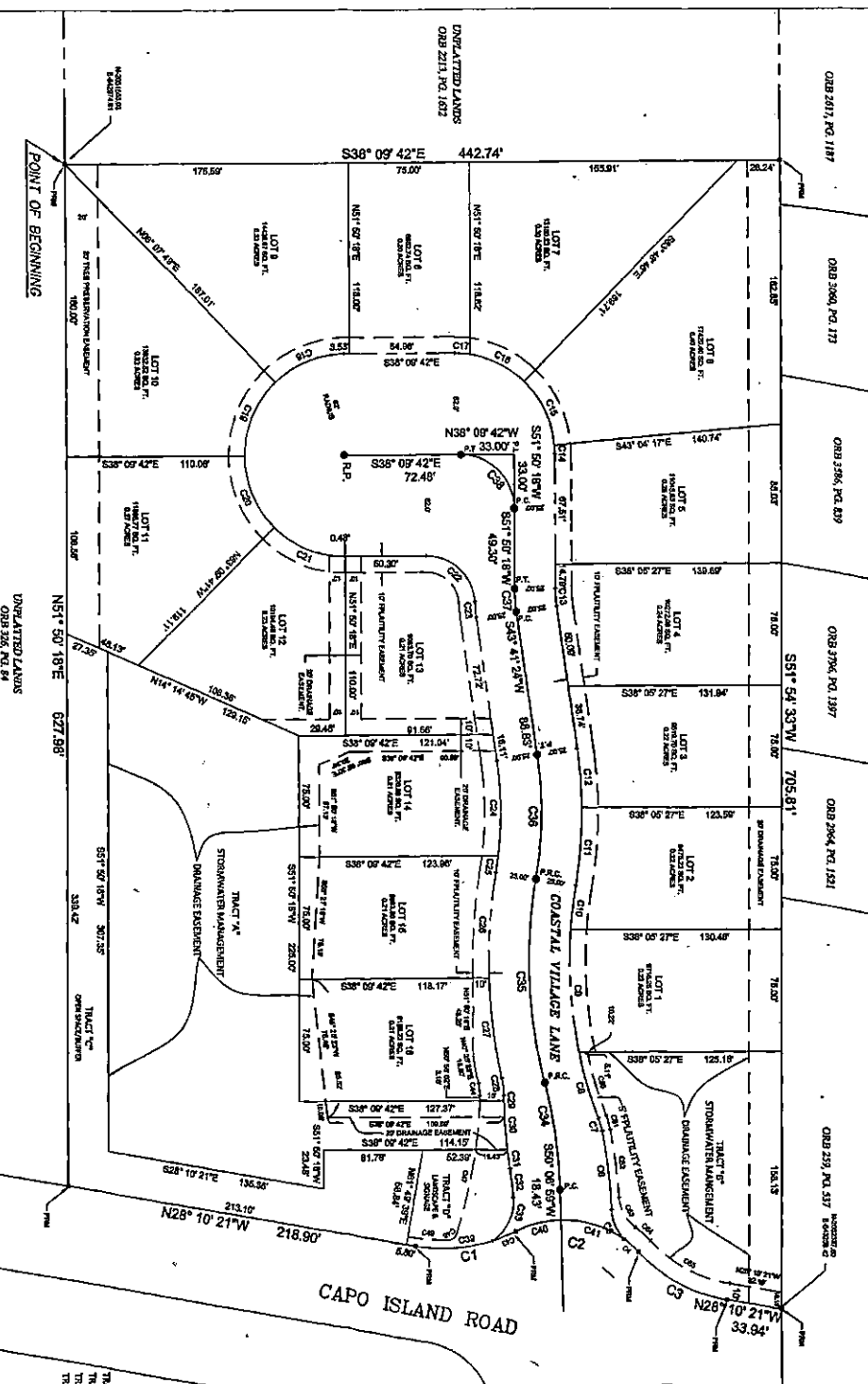

Deputy Clerk

RENDITION DATE 5/17/18



Coastal Village

A SUBDIVISION OF A PORTION OF SECTION 50, TOWNSHIP 6 SOUTH,
RANGE 29 EAST, ST. JOHNS COUNTY, FLORIDA.



CURVE TABLE				CURVE TABLE				CURVE TABLE				CURVE TABLE			
CURVE	LENGTH	RADIUS	DELTA BEARING	CURVE	LENGTH	RADIUS	DELTA BEARING	CURVE	LENGTH	RADIUS	DELTA BEARING	CURVE	LENGTH	RADIUS	DELTA BEARING
C1	63.5'	100.0'	36°24'00"	C9	44.0'	62.0'	40°42'00"	C17	10.0'	62.0'	51°18'00"	C25	3.5'	32.0'	9°24'00"
C2	63.5'	100.0'	36°24'00"	C10	31.0'	62.0'	39°30'00"	C18	11.0'	30.0'	18°18'00"	C26	1.4'	14.0'	5°12'00"
C3	63.5'	100.0'	36°24'00"	C11	10.0'	62.0'	51°18'00"	C19	47.30'	62.0'	43°42'00"	C27	1.4'	14.0'	5°12'00"
C4	12.2'	60.0'	10°48'00"	C12	62.0'	62.0'	0°00'00"	C20	48.0'	62.0'	48°00'00"	C28	1.4'	14.0'	5°12'00"
C5	21.0'	20.0'	38°48'00"	C13	62.0'	62.0'	0°00'00"	C21	48.0'	62.0'	48°00'00"	C29	1.4'	14.0'	5°12'00"
C6	48.0'	330.0'	8°24'00"	C14	48.0'	62.0'	48°00'00"	C22	48.0'	62.0'	48°00'00"	C30	1.4'	14.0'	5°12'00"
C7	8.0'	41.0'	8°24'00"	C15	48.0'	62.0'	48°00'00"	C23	48.0'	62.0'	48°00'00"	C31	1.4'	14.0'	5°12'00"
C8	42.0'	210.0'	15°48'00"	C16	48.0'	62.0'	48°00'00"	C24	48.0'	62.0'	48°00'00"	C32	1.4'	14.0'	5°12'00"
C9	76.0'	210.0'	15°48'00"	C17	10.0'	62.0'	51°18'00"	C25	3.5'	32.0'	9°24'00"	C33	1.4'	14.0'	5°12'00"
C10	31.0'	62.0'	39°30'00"	C18	11.0'	30.0'	18°18'00"	C26	1.4'	14.0'	5°12'00"	C34	1.4'	14.0'	5°12'00"
C11	10.0'	62.0'	51°18'00"	C19	47.30'	62.0'	43°42'00"	C27	1.4'	14.0'	5°12'00"	C35	1.4'	14.0'	5°12'00"
C12	62.0'	62.0'	0°00'00"	C20	48.0'	62.0'	48°00'00"	C28	1.4'	14.0'	5°12'00"				
C13	62.0'	62.0'	0°00'00"	C21	48.0'	62.0'	48°00'00"	C29	1.4'	14.0'	5°12'00"				
C14	48.0'	62.0'	48°00'00"	C22	48.0'	62.0'	48°00'00"	C30	1.4'	14.0'	5°12'00"				
C15	48.0'	62.0'	48°00'00"	C23	48.0'	62.0'	48°00'00"	C31	1.4'	14.0'	5°12'00"				
C16	48.0'	62.0'	48°00'00"	C24	48.0'	62.0'	48°00'00"	C32	1.4'	14.0'	5°12'00"				
C17	10.0'	62.0'	51°18'00"	C25	3.5'	32.0'	9°24'00"	C33	1.4'	14.0'	5°12'00"				
C18	11.0'	30.0'	18°18'00"	C26	1.4'	14.0'	5°12'00"	C34	1.4'	14.0'	5°12'00"				
C19	47.30'	62.0'	43°42'00"	C27	1.4'	14.0'	5°12'00"	C35	1.4'	14.0'	5°12'00"				
C20	48.0'	62.0'	48°00'00"												
C21	48.0'	62.0'	48°00'00"												
C22	48.0'	62.0'	48°00'00"												
C23	48.0'	62.0'	48°00'00"												
C24	48.0'	62.0'	48°00'00"												
C25	3.5'	32.0'	9°24'00"												
C26	1.4'	14.0'	5°12'00"												
C27	1.4'	14.0'	5°12'00"												
C28	1.4'	14.0'	5°12'00"												
C29	1.4'	14.0'	5°12'00"												
C30	1.4'	14.0'	5°12'00"												
C31	1.4'	14.0'	5°12'00"												
C32	1.4'	14.0'	5°12'00"												
C33	1.4'	14.0'	5°12'00"												
C34	1.4'	14.0'	5°12'00"												
C35	1.4'	14.0'	5°12'00"												

GRAPHIC SCALE
(IN FEET)
1 inch = 60 ft.

Cody's Professional Surveying & Mapping, Inc.
1001 W. 1st Street
P.O. Box 150
Maitland, Florida 32751

ISTORIA
MAP BOOK 55,
PAGES 33-38

