

RESOLUTION NO. 2018- 3
**RESOLUTION OF THE BOARD OF COUNTY COMMISSIONERS
OF ST. JOHNS COUNTY, FLORIDA APPROVING A PLAT FOR
PALMS AT OLD PONTE VEDRA ENTRY WAY.**

WHEREAS, DFH CORONA, LLC, A FLORIDA LIMITED LIABILITY COMPANY, AS OWNER has applied to the Board of County Commissioners of St. Johns County, Florida for approval to record a plat known as Palms at Old Ponte Vedra Entry Way.

NOW, THEREFORE BE IT RESOLVED BY THE BOARD OF COUNTY COMMISSIONERS OF ST. JOHNS COUNTY, FLORIDA, as follows:

Section 1. The above-described subdivision plat and its dedicated areas depicted thereon are conditionally approved and accepted by the Board of County Commissioners of St. Johns County, Florida subject to Sections 2, 3, 4, 5 and 6.

Section 2. A Required Improvements Bond in the amount of \$106,448.24 has been filed with the Clerk's office.

Section 3. A Required Improvements Bond in the amount of \$89,741.24 will be required for maintenance.

Section 4. The approval and acceptance described in Section 1 shall not take effect until the Clerk has received a title opinion, certificate, or policy pertaining to the real property that is the subject of the aforementioned subdivision plat which opinion, certificate or policy is in a form acceptable to the County Attorney or Assistant County Attorney.

Section 5. The Clerk is instructed to file and record the consent and joinder (s) to the plat executed by all mortgages identified in the title opinion or certificate of the title in Section 4.

Section 6. The approval and acceptance described in Section 1 shall not take effect until the plat has been signed by each of the following departments, person or offices:

- a) Chairman or Vice-Chairman of the Board of County Commissioners of St. Johns County, Florida;
- b) Office of the County Attorney;
- c) County Growth Management Department;
- d) Office of the County Surveyor; and
- e) Clerk of Courts.

The Clerk shall not sign or accept the Plat for recording until it has been signed by each of the above persons or entities described in a) through d) above. If the plat is not signed and accepted by the Clerk for recording within 14 days from the date hereof, then the above-described conditional approval shall

automatically terminate. If the plat is signed by the Clerk on or before such time, the conditions described herein shall be deemed to have been met.

ADOPTED by the Board of County Commissioners of St. Johns County, Florida, this 16th day of January, 2018.

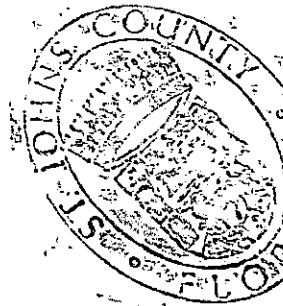
**BOARD OF COUNTY COMMISSIONERS
OF ST. JOHNS COUNTY, FLORIDA**

BY: *Henry O...*
Chair

ATTEST: Hunter S. Conrad

Pam Halterman
Deputy Clerk

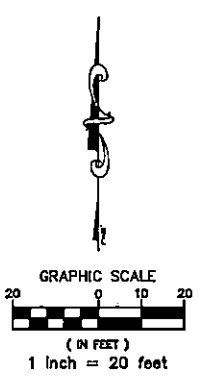
RENDITION DATE 1/18/18



PALMS AT OLD PONTE VEDRA ENTRY WAY

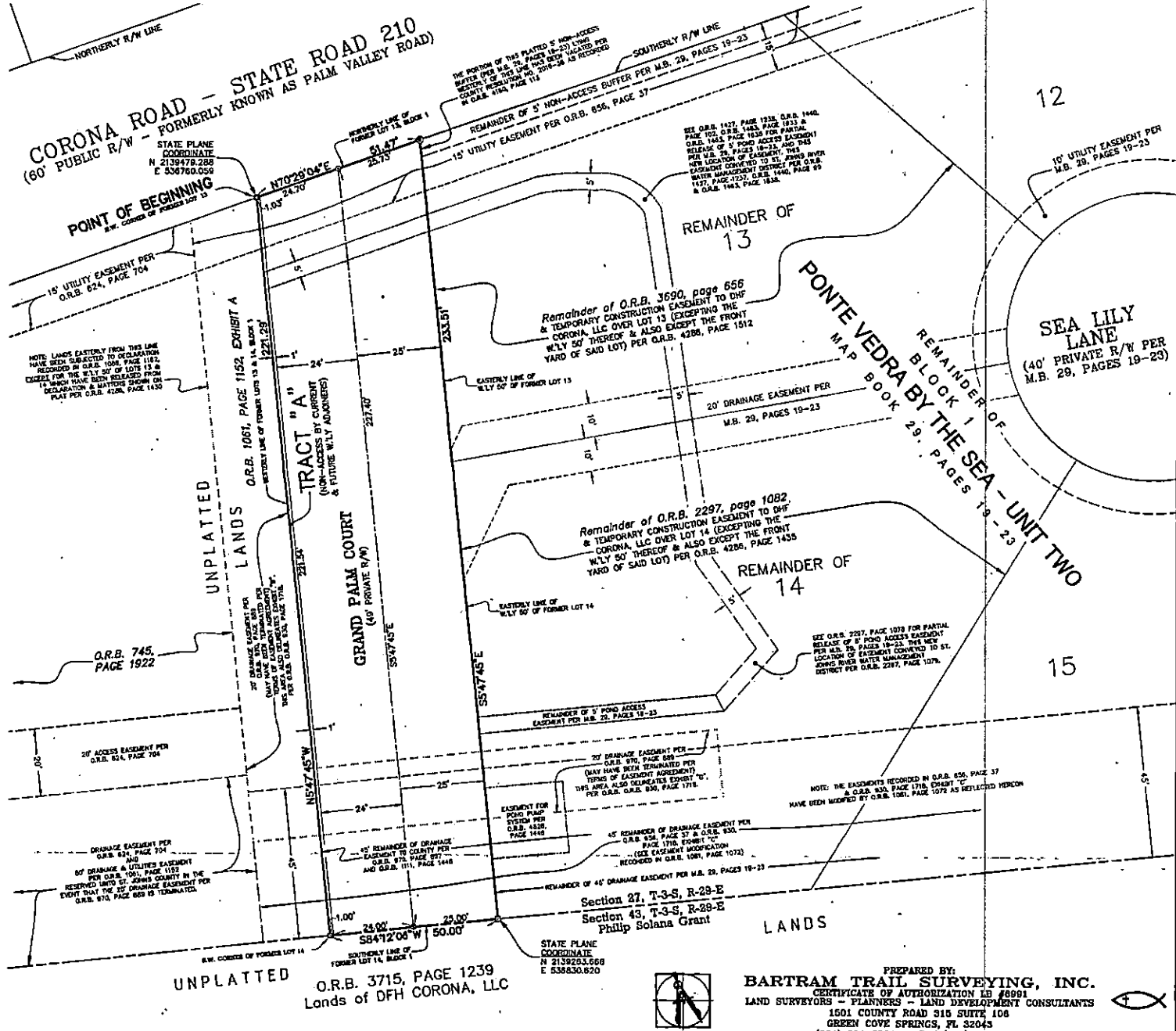
A Replat of the Westerly 50 feet of Lots 13 and 14, Block 1, PONTE VEDRA BY THE SEA - UNIT TWO, as recorded in Map Book 29, pages 19 through 23 of the Public Records of St. Johns County, Florida, situated in the Phillip Solana Grant, Section 43, Township 3 South, Range 29 East, of said County

MAP BOOK _____ PAGE _____
SHEET 2 OF 2 SHEETS



- LEGEND**
- ⊙ - DENOTES PK NAIL & BRASS DISK SET ("POP UP 8991")
 - ⊕ - DENOTES 4" x 4" CONCRETE MONUMENT FOUND. (NO I.D.)
 - ⊙ - DENOTES 4" x 4" CONCRETE MONUMENT SET. ("P.R.M. - LB 8991")
 - ⊙ - DENOTES 8/8" REDAR SET. ("P.R.M. - LB 8991")
 - M.B. - DENOTES MAP BOOK
 - C.M. - DENOTES CONCRETE MONUMENT
 - N.T.S. - DENOTES NOT TO SCALE
 - O.R.B. - DENOTES OFFICIAL RECORDS BOOK
 - P.C.P. - DENOTES PERMANENT CONTROL POINT
 - P.R.M. - DENOTES PERMANENT REFERENCE MONUMENT
 - R/W - DENOTES RIGHT OF WAY
 - T-3-S - DENOTES TOWNSHIP 3 SOUTH
 - R-29-E - DENOTES RANGE 29 EAST

- GENERAL NOTES:**
- The Intended use of State Plane Coordinates shown hereon is for GIS base mapping purposes only. Coordinates are based on NAD 83 - Florida East Zone - U.S. Feet.
 - Bearings shown are based on an assumed bearing of North 54°45' West for the Westerly line of Lots 13 & 14, Block 1, said PONTE VEDRA BY THE SEA - UNIT TWO.
 - Notice: This plat, as recorded in its graphic form, is the official depiction of the subdivided lands described herein and will in no circumstances be supplanted in authority by any other graphic or digital form of the plat. There may be additional restrictions that are not depicted on this plat that may be found in the Public Records of this county.



PREPARED BY:
BARTRAM TRAIL SURVEYING, INC.
CERTIFICATE OF AUTHORIZATION LB 8991
LAND SURVEYORS - PLANNERS - LAND DEVELOPMENT CONSULTANTS
1501 COUNTY ROAD 915 SUITE 105
GREEN COVE SPRINGS, FL 32043
(904) 284-2224 FAX (904) 284-2258