

RESOLUTION NO. 2019- 282
RESOLUTION OF THE BOARD OF COUNTY COMMISSIONERS
OF ST. JOHNS COUNTY, FLORIDA APPROVING A PLAT FOR
PEARL AT ST JOHNS

WHEREAS, TAKILA ANDERSON AND LISA LEWIS, AS OWNERS have applied to the Board of County Commissioners of St. Johns County, Florida for approval to record a plat known as Pearl at St Johns.

NOW, THEREFORE BE IT RESOLVED BY THE BOARD OF COUNTY COMMISSIONERS OF ST. JOHNS COUNTY, FLORIDA, as follows:

Section 1. The above-described subdivision plat and its dedicated areas depicted thereon are conditionally approved and accepted by the Board of County Commissioners of St. Johns County, Florida subject to Sections 2, 3, 4, 5 and 6.

Section 2. A Required Improvements Bond is not required.

Section 3. A Required Improvements Bond for maintenance is not required.

Section 4. The approval and acceptance described in Section 1 shall not take effect until the Clerk has received a title opinion, certificate, or policy pertaining to the real property that is the subject of the aforementioned subdivision plat which opinion, certificate or policy is in a form acceptable to the County Attorney or Assistant County Attorney.

Section 5. The Clerk is instructed to file and record the consent and joinder (s) to the plat executed by all mortgages identified in the title opinion or certificate of the title in Section 4.

Section 6. The approval and acceptance described in Section 1 shall not take effect until the plat has been signed by each of the following departments, person or offices:

- a) Chairman or Vice-Chairman of the Board of County Commissioners of St. Johns County, Florida;
- b) Office of the County Attorney;
- c) County Growth Management Department;
- d) Office of the County Surveyor; and
- e) Clerk of Courts.

The Clerk shall not sign or accept the Plat for recording until it has been signed by each of the above persons or entities described in a) through d) above. If the plat is not signed and accepted by the Clerk for recording within 14 days from the date hereof, then the above-described conditional approval shall automatically terminate. If the plat is signed by the Clerk on or before such time, the conditions described herein shall be deemed to have been met.

ADOPTED by the Board of County Commissioners of St. Johns County, Florida, this 12th day of September, 2019.

**BOARD OF COUNTY COMMISSIONERS
OF ST. JOHNS COUNTY, FLORIDA**

BY: Paul M. Waldron
Paul M. Waldron, Chair

ATTEST: Hunter S. Conrad, Clerk

Sam Halterman
Deputy Clerk

RENDITION DATE 9/17/19



PEARL AT ST. JOHNS

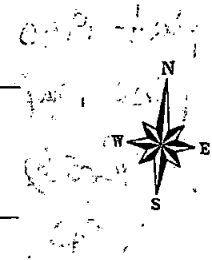
0 20 40 80
SCALE: 1 INCH = 20 FEET

A REPLAT OF LOT 6, BLOCK 67, DANCY TRACT, ACCORDING TO THE MAP OF NEW AUGUSTINE, DATED JUNE, 1918, ON FILE IN THE OFFICE OF THE CLERK OF THE CIRCUIT COURT OF ST. JOHNS COUNTY, FLORIDA, SECTION 41, TOWNSHIP 7 SOUTH, RANGE 29 EAST, ST. JOHNS COUNTY, FLORIDA.

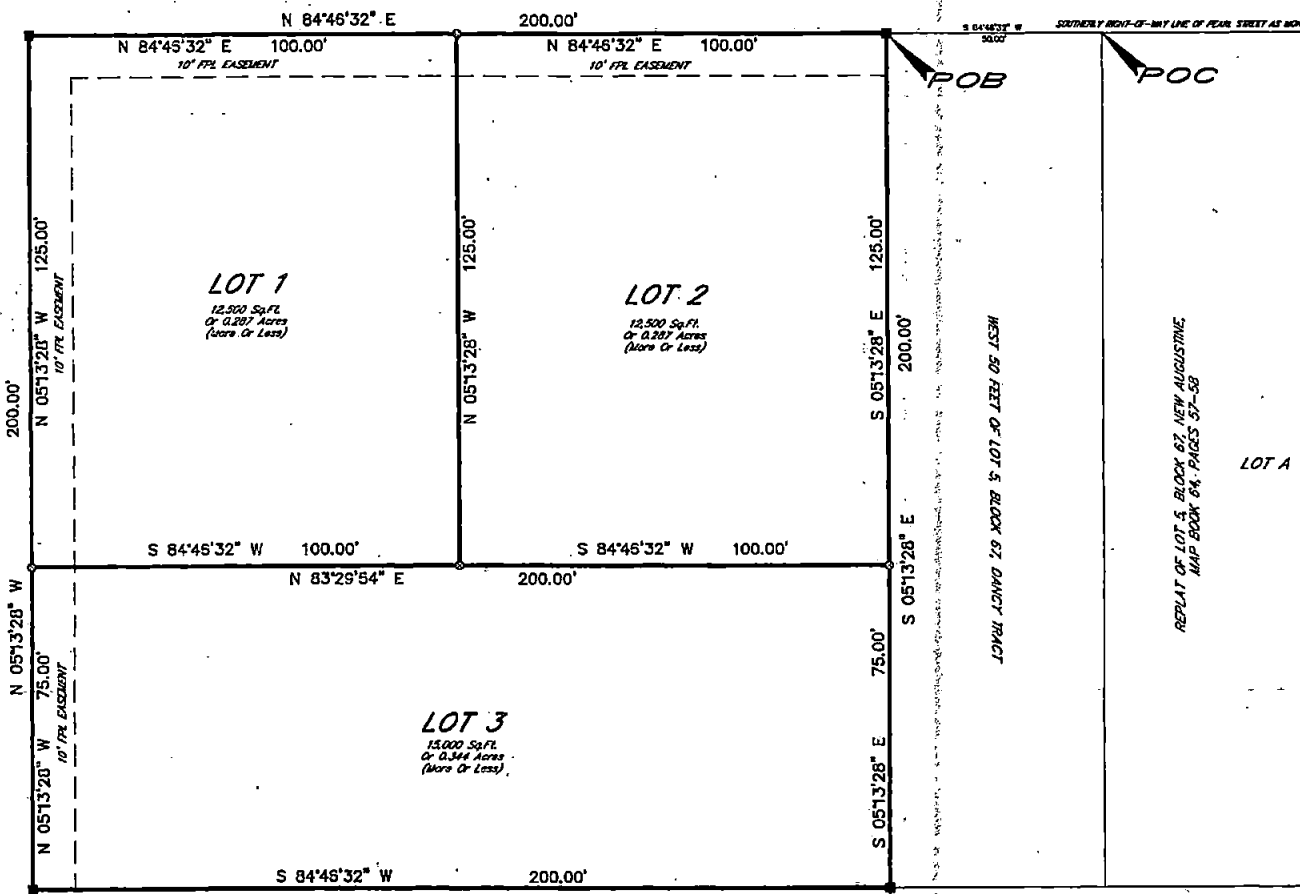
NORTHERLY RIGHT-OF-WAY LINE OF PEARL STREET AS MONUMENTED AND MAINTAINED

PEARL STREET
30' R/W - PAVED - PLATED AS ROAD

S 64°46'32" E 100.00' SOUTHERLY RIGHT-OF-WAY LINE OF PEARL STREET AS MONUMENTED AND MAINTAINED



NORTH ST. JOHNS STREET
30' R/W - PAVED - PLATED AS ROAD



- LEGEND**
- POC = POINT OF COMMENCEMENT
 - POB = POINT OF BEGINNING
 - R/W = RIGHT OF WAY
 - R/B = POINT OF BEGINNING
 - LB = LICENSED BUSINESS
 - ORB = OFFICIAL RECORDS BOOK
 - Sq. Ft. = SQUARE FEET
 - FPL = FLORIDA POWER AND LIGHT COMPANY
 - = PERMANENT REFERENCE MONUMENT
 - ⊙ = SET 4" X 4" CONCRETE MONUMENT - LB # 6177
 - ⊙ = SET 5/8" IRON ROD - LB # 6177

NOTES:
THE BASIS OF BEARINGS IS THE EAST RIGHT OF WAY LINE OF NORTH ST. JOHNS STREET HAVING AN ASSUMED BEARING OF N 05°13'28" W.

STATE PLANE COORDINATES AS SHOWN WERE OBTAINED USING ASHTECH PROMARK II RECEIVERS AND QINS SOLUTIONS SOFTWARE VERSION 3.00.8 AS REFERENCED FROM THE FLORIDA PERMANENT REFERENCE NETWORK, FLORIDA - ZONE EAST - U.S. FEET.

GRID N: 2021420.330
GRID E: 547517.693
LATITUDE: N 29°53'37.190"
LONGITUDE: W 81°20'34.357"
LOT 1

GRID N: 2021438.542
GRID E: 547716.862
LATITUDE: N 29°53'37.376"
LONGITUDE: W 81°20'32.094"
LOT 2

BLOCK 67, DANCY TRACT, ACCORDING TO THE MAP OF NEW AUGUSTINE, DATED JUNE, 1918

PLAT PREPARED BY:
ANCIENT CITY SURVEYORS, INC.

ACS
PROFESSIONAL LAND SURVEYORS

4425 U.S. HIGHWAY No. 1 SOUTH - SUITE 401
ST. AUGUSTINE, FLORIDA 32086
PHONE: 904-797-9967 FAX: 904-797-8027
E-MAIL: acs-surveys@comcast.net

LB# 6177