

RESOLUTION NO. 2020- 236
RESOLUTION OF THE BOARD OF COUNTY COMMISSIONERS
OF ST. JOHNS COUNTY, FLORIDA APPROVING A PLAT FOR
BORBELY AT THE BEACHES.

WHEREAS, BERNARD ROBERT BORBELY AND CAROL ANN BORBELY, AS OWNERS, have applied to the Board of County Commissioners of St. Johns County, Florida for approval to record a plat known as Borbely at the Beaches.

NOW, THEREFORE BE IT RESOLVED BY THE BOARD OF COUNTY COMMISSIONERS OF ST. JOHNS COUNTY, FLORIDA, as follows:

Section 1. The above-described subdivision plat and its dedicated areas depicted thereon are conditionally approved and accepted by the Board of County Commissioners of St. Johns County, Florida subject to Sections 2, 3, 4, 5 and 6.

Section 2. A Required Improvements Bond is not required.

Section 3. A Required Improvements Bond for maintenance is not required.

Section 4. The approval and acceptance described in Section 1 shall not take effect until the Clerk has received a title opinion, certificate, or policy pertaining to the real property that is the subject of the aforementioned subdivision plat which opinion, certificate or policy is in a form acceptable to the County Attorney or Assistant County Attorney.

Section 5. The Clerk is instructed to file and record the consent and joinder(s) to the plat executed by all mortgagees identified in the title opinion or certificate of the title in Section 4.

Section 6. The approval and acceptance described in Section 1 shall not take effect until the plat has been signed by each of the following departments, person or offices:

- a) Chairman or Vice-Chairman of the Board of County Commissioners of St. Johns County, Florida;
- b) Office of the County Attorney;
- c) County Growth Management Department;
- d) Office of the County Surveyor; and
- e) Clerk of Courts.

The Clerk shall not sign or accept the Plat for recording until it has been signed by each of the above persons or entities described in a) through d) above. If the plat is not signed and accepted by the Clerk for recording within 14 days from the date hereof, then the above-described conditional approval shall automatically terminate. If the plat is signed by the Clerk on or before such time, the conditions described herein shall be deemed to have been met.

ADOPTED by the Board of County Commissioners of St. Johns County, Florida, this 7th day of July, 2020.

**BOARD OF COUNTY COMMISSIONERS
OF ST. JOHNS COUNTY, FLORIDA**

BY: [Signature]
Jeb S. Smith, Chair

ATTEST: Brandon Patty, Clerk

[Signature: Pam Halterman]
Deputy Clerk

RENDITION DATE 7/9/20

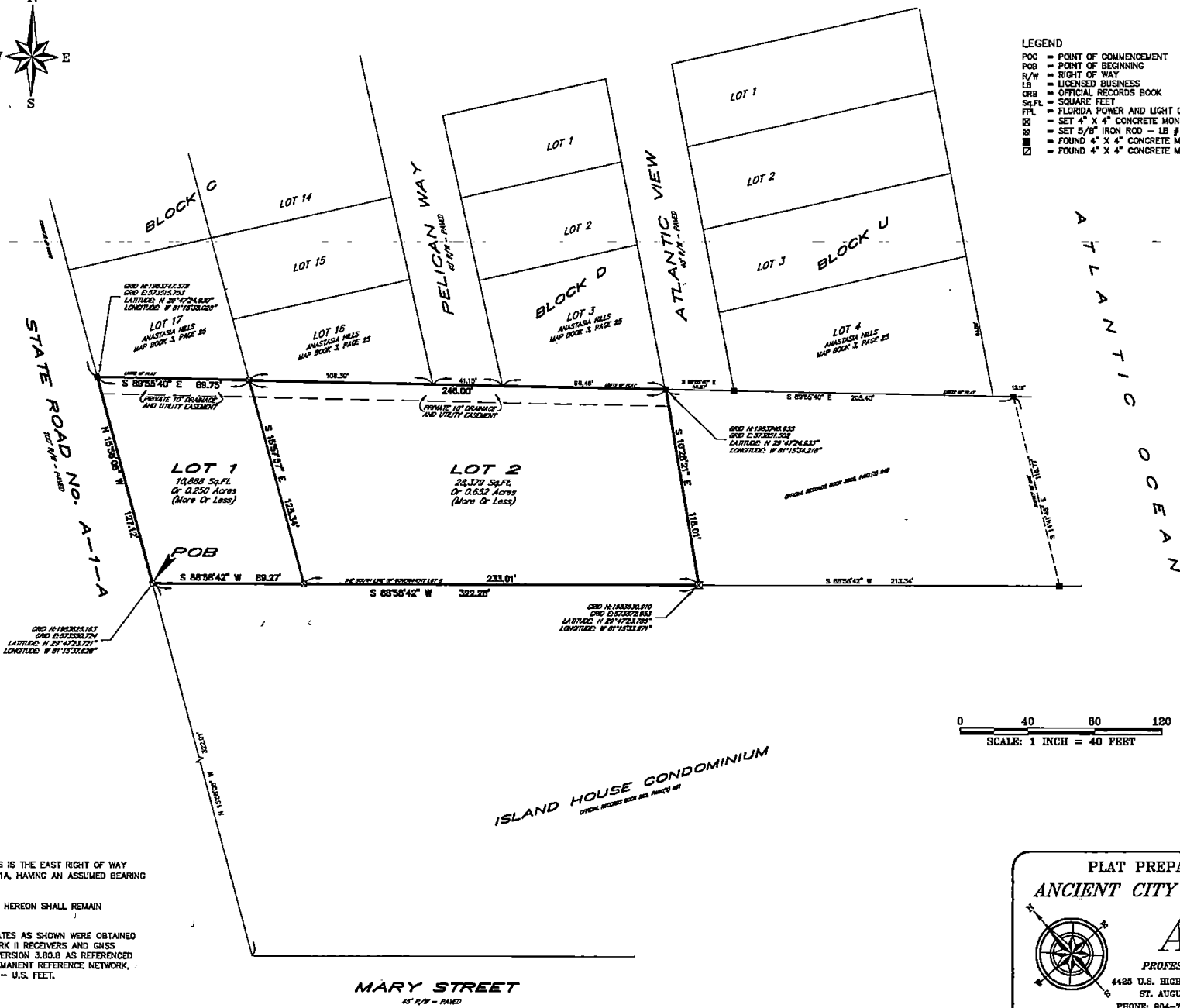


BORBELY AT THE BEACHES

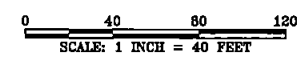
PART OF SECTIONS 22 AND 23 TOWNSHIP 8 SOUTH,
RANGE 30 EAST, ST. JOHNS COUNTY, FLORIDA.

MAP BOOK _____ PAGE _____

SHEET 2 OF 2



- LEGEND**
- POC = POINT OF COMMENCEMENT
 - POB = POINT OF BEGINNING
 - R/W = RIGHT OF WAY
 - LB = LICENSED BUSINESS
 - ORB = OFFICIAL RECORDS BOOK
 - Sq.Ft. = SQUARE FEET
 - FPL = FLORIDA POWER AND LIGHT COMPANY
 - ⊠ = SET 4" X 4" CONCRETE MONUMENT - LB # 8177
 - ⊞ = SET 5/8" IRON ROD - LB # 8177
 - ⊞ = FOUND 4" X 4" CONCRETE MONUMENT - NO IDENTIFICATION
 - ⊞ = FOUND 4" X 4" CONCRETE MONUMENT - # 6444



NOTES:
THE BASIS OF BEARINGS IS THE EAST RIGHT OF WAY LINE OF STATE ROAD A1A, HAVING AN ASSUMED BEARING OF N 15°58'08" W.
ALL EASEMENTS SHOWN HEREON SHALL REMAIN PRIVATELY OWNED.
STATE PLANE COORDINATES AS SHOWN WERE OBTAINED USING ASHTECH PROMARK II RECEIVERS AND GNSS SOLUTIONS SOFTWARE VERSION 3.80.0 AS REFERENCED FROM THE FLORIDA PERMANENT REFERENCE NETWORK, FLORIDA - ZONE EAST - U.S. FEET.

MARY STREET
45' R/W - PAVED

PLAT PREPARED BY:
ANCIENT CITY SURVEYORS
INC.

ACS
PROFESSIONAL LAND SURVEYORS

4425 U.S. HIGHWAY No. 1 SOUTH - SUITE 401
ST. AUGUSTINE, FLORIDA 32086
PHONE: 904-797-9967 FAX: 904-797-8027
E-MAIL: acs-surveyors@comcast.net

LB# 8177