

RESOLUTION NO. 2020- 99
RESOLUTION OF THE BOARD OF COUNTY COMMISSIONERS
OF ST. JOHNS COUNTY, FLORIDA APPROVING A PLAT FOR
COLONNADE DRIVE

WHEREAS, TOLOMATO COMMUNITY DEVELOPMENT DISTRICT, A LOCAL UNIT OF SPECIAL-PURPOSE GOVERNMENT ESTABLISHED PURSUANT TO CHAPTER 190, FLORIDA STATUTES, AS OWNER has applied to the Board of County Commissioners of St. Johns County, Florida for approval to record a plat known as Colonnade Drive.

NOW, THEREFORE BE IT RESOLVED BY THE BOARD OF COUNTY COMMISSIONERS OF ST. JOHNS COUNTY, FLORIDA, as follows:

Section 1. The above-described subdivision plat and its dedicated areas depicted thereon are conditionally approved and accepted by the Board of County Commissioners of St. Johns County, Florida subject to Sections 2, 3, 4, 5 and 6.

Section 2. A Required Improvements Bond in the amount of \$1,717,871.12 has been filed with the Clerk's office.

Section 3. A Required Improvements Bond in the amount of \$596,294.19 will be required for maintenance.

Section 4. The approval and acceptance described in Section 1 shall not take effect until the Clerk has received a title opinion, certificate, or policy pertaining to the real property that is the subject of the aforementioned subdivision plat which opinion, certificate or policy is in a form acceptable to the County Attorney or Assistant County Attorney.

Section 5. The Clerk is instructed to file and record the consent and joinder (s) to the plat executed by all mortgages identified in the title opinion or certificate of the title in Section 4.

Section 6. The approval and acceptance described in Section 1 shall not take effect until the plat has been signed by each of the following departments, person or offices:

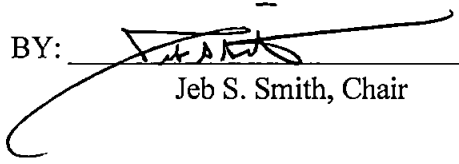
- a) Chairman or Vice-Chairman of the Board of County Commissioners of St. Johns County, Florida;
- b) Office of the County Attorney;
- c) County Growth Management Department;
- d) Office of the County Surveyor; and
- e) Clerk of Courts.

The Clerk shall not sign or accept the Plat for recording until it has been signed by each of the above persons or entities described in a) through d) above. If the plat is not signed and accepted by the Clerk for recording within 14 days from the date hereof, then the above-described conditional approval shall

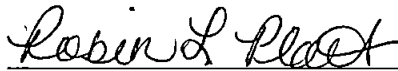
automatically terminate. If the plat is signed by the Clerk on or before such time, the conditions described herein shall be deemed to have been met.

ADOPTED by the Board of County Commissioners of St. Johns County, Florida, this 7th day of April, 2020.

**BOARD OF COUNTY COMMISSIONERS
OF ST. JOHNS COUNTY, FLORIDA**

BY: 
Jeb S. Smith, Chair

ATTEST: Brandon Patty, Clerk of Court


Deputy Clerk

RENDITION DATE APR 9 2020

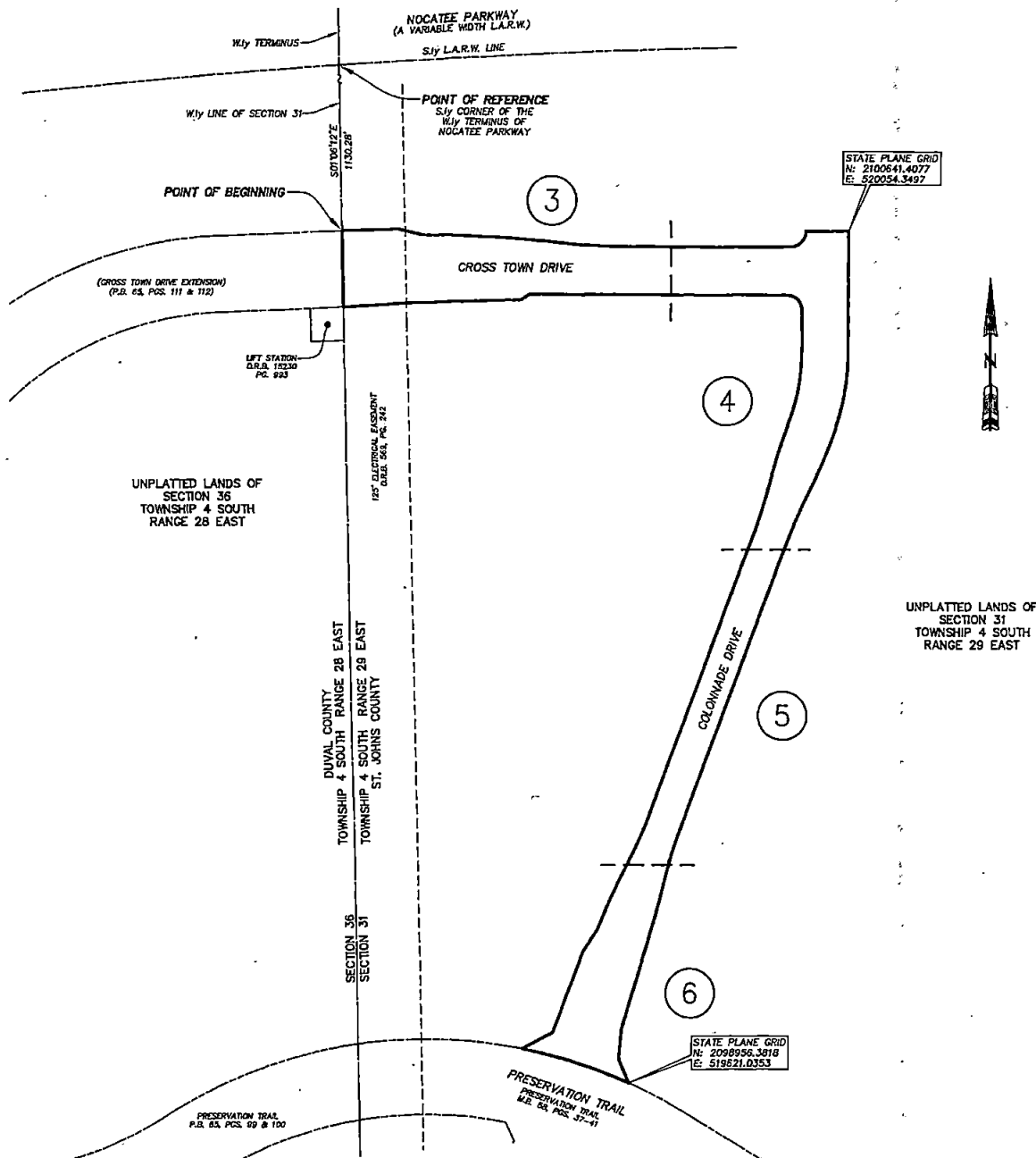


COLONNADE DRIVE

A PORTION OF SECTION 31, TOWNSHIP 4 SOUTH, RANGE 29 EAST,
ST. JOHNS COUNTY, FLORIDA.

MAP BOOK PAGE

SHEET 2 OF 6 SHEETS



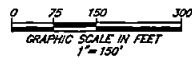
NOTES

- 1) Bearings shown are referenced to the State Plane coordinates as indicated hereon and are based on the Westerly line of Section 31 as being South 01°08'12" East.
- 2) Coordinates based on GPS observation of the following National Geodetic Survey Control: Station "JREG" (Jacksonville 2) coordinates: N 2182506.373 E 493682.930. Coordinate Datum: State Plane values reference Florida East Zone, North American Datum 1983 (2011) and are in U.S. survey feet.
- 3) NOTICE: This plat, as recorded in its graphic form, is the official depiction of the subdivided lands described herein and will in no circumstances be supplanted in authority by any other graphic or digital form of the plat. There may be additional restrictions that are not recorded on this plat that may be found in the Public Records of this county.
- 4) Section lines and quarter section lines depicted hereon are graphic representations only and do not reflect field measure unless otherwise noted.
- 5) Lands depicted hereon are subject to Developer and Utility Service Agreement recorded in Official Records Book 2359, Page 1979, as amended by Official Records Book 3305, Page 571 of the Public Records of St. Johns County, Florida.



LEGEND

- DENOTES SET P.R.M., 4"x4" C.M. STAMPED L.B.#3624, UNLESS OTHERWISE NOTED
- DENOTES FOUND P.R.M., 4"x4" C.M. STAMPED L.B.#3624, UNLESS OTHERWISE NOTED
- DENOTES P.C.P., STAMPED L.B.#3824
- P.R.M. PERMANENT REFERENCE MONUMENT
- C.M. CONCRETE MONUMENT
- P.C.P. PERMANENT CONTROL POINT
- L.B. LICENSED BUSINESS
- R. RADIUS
- Δ CENTRAL ANGLE
- L. ARC LENGTH
- CB. CHORD BEARING
- CH. CHORD DISTANCE
- P.C. POINT OF CURVATURE
- P.T. POINT OF TANGENCY
- P.C.C. POINT OF COMPOUND CURVATURE
- P.R.C. POINT OF REVERSE CURVATURE
- CI. TABULATED CURVE DATA
- R/W. RIGHT OF WAY
- L.A.R.W. LIMITED ACCESS RIGHT OF WAY
- P.B. PLAT BOOK
- M.B. MAP BOOK
- P.C. PAGE
- O.R.B. OFFICIAL RECORDS BOOK
- MATCHLINE
- ③ SHEET REFERENCE NUMBER



PREPARED BY:
ETM SURVEYING & MAPPING, INC.
14775 OLD ST. AUGUSTINE ROAD
JACKSONVILLE, FL 32258 (904) 642-8550
CERTIFICATE OF AUTHORIZATION NO. L.B. 3624