

**RESOLUTION NO. 2022- 43**  
**RESOLUTION OF THE BOARD OF COUNTY COMMISSIONERS  
OF ST. JOHNS COUNTY, FLORIDA APPROVING A PLAT FOR  
ARBORS AT RIVERTOWN- PHASE THREE**

**WHEREAS, MATTAMY JACKSONVILLE LLC, A DELAWARE LIMITED LIABILITY COMPANY AND THE RIVERS EDGE COMMUNITY DEVELOPMENT DISTRICT, A LOCAL UNIT OF SPECIAL PURPOSE GOVERNMENT, AS OWNERS,** have applied to the Board of County Commissioners of St. Johns County, Florida for approval to record a plat known as Arbors at Rivertown – Phase Three.

**NOW, THEREFORE BE IT RESOLVED BY THE BOARD OF COUNTY COMMISSIONERS OF ST. JOHNS COUNTY, FLORIDA,** as follows:

**Section 1.** The above-described subdivision plat and its dedicated areas depicted thereon are conditionally approved and accepted by the Board of County Commissioners of St. Johns County, Florida subject to Sections 2, 3, 4, 5 and 6.

**Section 2.** A Required Improvements Bond in the amount of \$1,552,674.55 has been filed with the Clerk's office.

**Section 3.** A Required Improvements Bond in the amount of \$216,580.57 is required for maintenance.

**Section 4.** The approval and acceptance described in Section 1 shall not take effect until the Clerk has received a title opinion, certificate, or policy pertaining to the real property that is the subject of the aforementioned subdivision plat which opinion, certificate or policy is in a form acceptable to the County Attorney or Assistant County Attorney.

**Section 5.** The Clerk is instructed to file and record the consent and joinder(s) to the plat executed by all mortgagees identified in the title opinion or certificate of the title in Section 4.

**Section 6.** The approval and acceptance described in Section 1 shall not take effect until the plat has been signed by each of the following departments, person or offices:

- a) Chairman or Vice-Chairman of the Board of County Commissioners of St. Johns County, Florida;
- b) Office of the County Attorney;
- c) County Growth Management Department;
- d) Office of the County Surveyor; and
- e) Clerk of Courts.

The Clerk shall not sign or accept the Plat for recording until it has been signed by each of the above persons or entities described in a) through d) above. If the plat is not signed and accepted by the Clerk for

recording within 14 days from the date hereof, then the above-described conditional approval shall automatically terminate. If the plat is signed by the Clerk on or before such time, the conditions described herein shall be deemed to have been met.

**ADOPTED** by the Board of County Commissioners of St. Johns County, Florida, this 15th day of February, 2022.

**BOARD OF COUNTY COMMISSIONERS  
OF ST. JOHNS COUNTY, FLORIDA**

BY: *Henry Dean*  
Henry Dean, Chair

**ATTEST:** Brandon J. Patty, Clerk of the Circuit Court & Comptroller

*Sam Walterman*  
Deputy Clerk

Rendition Date 2/17/22





# Arbors at Rivertown - Phase Three

A PARCEL OF LAND, BEING A PORTION OF THE UNPLATTED LANDS OF THE "FRANCIS P. FATIO GRANT", IN SECTION 39, TOWNSHIP 5 SOUTH, RANGE 27 EAST, A PORTION OF THE UNPLATTED LANDS OF THE "FRANCIS P. FATIO GRANT", IN SECTION 44, TOWNSHIP 5 SOUTH, RANGE 26 EAST, AND A REPLAT OF A PORTION OF TRACT "SWMF-2" (STORM WATER MANAGEMENT FACILITY), AS SHOWN ON THE PLAT OF "ESTATES AT RIVERTOWN," AS RECORDED IN THE PLAT THEREOF, RECORDED IN MAP BOOK 105-PAGES 50 THROUGH 58 OF THE PUBLIC RECORDS OF ST. JOHNS COUNTY, FLORIDA, SAID LANDS ALL LYING WITHIN ST. JOHNS COUNTY, FLORIDA.

MAP BOOK \_\_\_\_\_ PAGE \_\_\_\_\_

SHEET TWO (2) of FOURTEEN (14) SHEETS

SEE SHEET TWO (2) FOR LEGEND,  
GENERAL NOTES, ABBREVIATIONS and  
PLAT TITLE LETTER COMMENTS  
SEE SHEET THREE (3) FOR KEY MAP

### GENERAL NOTES:

1) BEARINGS SHOWN HEREON, ARE BASED ON THE STATE OF FLORIDA, STATE PLANE COORDINATES, NORTH AMERICAN DATUM/AD 1983 (1990), FLORIDA EAST ZONE, (ZONES 1801), U.S. FEET AS NOTED BELOW IN GENERAL NOTE No. 2, AND FOR THE NORTHERLY MONUMENTED BOUNDARY LINE OF THE "RIVERTOWN DEVELOPMENT", AS DESCRIBED AND RECORDED IN THAT WARRANTY DEED TO WATKINS RIVERTOWN, LLC, AS RECORDED IN OFFICIAL RECORDS, PAGE 1614 ET SEQ. OF THE PUBLIC RECORDS OF ST. JOHNS COUNTY, AS N 73°32'24" E.

2) ALL PLATTED UTILITY EASEMENTS SHALL PROVIDE THAT SUCH EASEMENTS SHALL ALSO BE EASEMENTS FOR THE CONSTRUCTION, INSTALLATION, MAINTENANCE, AND OPERATION OF CABLE TELEVISION SERVICES, PROVIDED, HOWEVER, NO SUCH CONSTRUCTION, INSTALLATION, MAINTENANCE, AND OPERATION OF CABLE TELEVISION SERVICES SHALL INTERFERE WITH THE FACILITIES AND SERVICES OF AN ELECTRIC, TELEPHONE, GAS, OR OTHER PUBLIC UTILITY. IN THE EVENT A CABLE TELEVISION COMPANY DAMAGES THE FACILITIES OF A PUBLIC UTILITY, IT SHALL BE SOLELY RESPONSIBLE FOR THE DAMAGES. THIS SHALL NOT APPLY TO THOSE PRIVATE EASEMENTS GRANTED TO OR OBTAINED BY A PARTICULAR ELECTRIC, TELEPHONE, GAS OR OTHER PUBLIC UTILITY. SUCH CONSTRUCTION, INSTALLATION, MAINTENANCE, AND OPERATION SHALL COMPLY WITH THE NATIONAL ELECTRICAL SAFETY CODE, AS ADOPTED BY THE FLORIDA PUBLIC SERVICE COMMISSION.

3) CERTAIN EASEMENTS ARE RESERVED FOR FLORIDA POWER & LIGHT (FPL) FOR USE IN CONJUNCTION WITH THE UNDERGROUND ELECTRICAL DISTRIBUTION SYSTEM.

4) NOTICE: THIS PLAT, AS RECORDED IN ITS GRAPHIC FORM, IS THE OFFICIAL DEPICTION OF THE SUBDIVIDED LANDS DESCRIBED HEREIN AND WILL IN NO CIRCUMSTANCES BE SUPPLANTED IN AUTHORITY BY ANY OTHER GRAPHIC OR DIGITAL FORM OF THE PLAT.

THERE MAY BE ADDITIONAL RESTRICTIONS THAT ARE NOT RECORDED ON THIS PLAT THAT MAY BE FOUND IN THE PUBLIC RECORDS OF ST. JOHNS COUNTY, FLORIDA.

5) CURRENT LAW PROVIDES THAT NO CONSTRUCTION, FILLING, REMOVAL OF EARTH, CUTTING OF TREES OR OTHER PLANTING SHALL TAKE PLACE WATERWARD OF THE JURISDICTIONAL WETLAND LINES AS DEPICTED ON THIS PLAT WITHOUT THE WRITTEN APPROVAL OF THE ST. JOHNS COUNTY AND OTHER REGULATORY AGENCIES WITH JURISDICTION OVER SUCH WETLANDS. IT IS THE RESPONSIBILITY OF THE LOT OWNER, HIS AGENT AND THE ENTITY PERFORMING ANY ACTIVITY WITHIN THE WETLAND AREA TO OBTAIN THE NECESSARY WRITTEN APPROVALS PRIOR TO THE BEGINNING OF ANY WORK.

THIS WETLAND JURISDICTIONAL LINE AND UPLAND BUFFER MAY BE SUPERSEDED AND REDETERMINED FROM TIME TO TIME BY THE APPROPRIATE GOVERNMENTAL AGENCIES.

6) UPLAND BUFFERS ADJACENT TO WETLAND JURISDICTIONAL AREAS ARE TO REMAIN NATURAL, VEGETATIVE AND UNDISTURBED.

7) THE STATE PLANE COORDINATES SHOWN HEREON ARE BASED ON NORTH AMERICAN DATUM/AD 1983 (1990), FLORIDA EAST ZONE, U.S. FEET. THE INTENDED USE OF THESE COORDINATES IS FOR GIS BASE MAPPING PURPOSES ONLY. BY THE ST. JOHNS COUNTY GIS DEPARTMENT. ANY OTHER USE, BESIDES THAT WHICH IS STATED HEREON, IS THE RESPONSIBILITY OF THE PARTY(IES) UTILIZING THESE COORDINATES FOR THEIR NON INTENDED USE.

THE ST. JOHNS COUNTY GPS CONTROL MONUMENTS USED TO DETERMINE THE COORDINATES SHOWN HEREON WERE AS FOLLOWS:

a) CONTROL POINT "G113", WITH A PUBLISHED COORDINATE VALUE OF N(1): 2,068,937.270191, AND E(1): 453,788.927478  
b) CONTROL POINT "G114", WITH A PUBLISHED COORDINATE VALUE OF N(1): 2,066,019.542691, AND E(1): 457,528.338248

### ABBREVIATIONS USED IN THIS PLAT

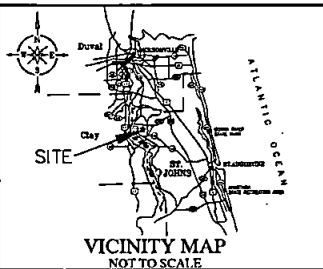
ABBREVIATION	DEFINITION
PRM	PERMANENT REFERENCE MONUMENT
P.C.P.	PERMANENT CONTROL POINT
CM	CONCRETE MONUMENT
LS	LICENSED BUSINESS PROFESSIONAL LAND SURVEYOR
PLS	PROFESSIONAL LAND SURVEYOR & MAPPER
PSM	PROFESSIONAL SURVEYOR AND MAPPER
AMP	AND
R	RADIUS
D	DELTA/CENTRAL ANGLE/
CL	ARC LENGTH
CB	CURVE BEARING
CD	CURVE DISTANCE
PI	POINT OF INTERSECTION
PC	POINT OF CURVATURE
PT	POINT OF TANGENCY
P.O.C.	POINT ON CURVE
P.C.C.	POINT OF COMPOUND CURVATURE
P.R.C.	POINT OF REVERSE CURVATURE
RP	RADIUS POINT
TWP	TOWNSHIP
RNG	RANGE
E	EAST
W	WEST
N	NORTH
S	SOUTH
CS	TABULATED CURVE TABLE
LCS	TABULATED LINE TABLE
R/W	RIGHT OF WAY
DOT	DEPARTMENT OF TRANSPORTATION
CL	CENTERLINE
MB	MAP BOOK
FB	FLAT BOOK
---	PAGE
---	MATCH LINE
EA-E	EIA ELECTRIC EASEMENT
EA-EI	EIA EQUIPMENT EASEMENT
FP & L	FLORIDA POWER & LIGHT EASEMENT
SRWMP	ST. JOHNS RIVER WATER MANAGEMENT DISTRICT

### LEGENDS USED IN THIS PLAT

LEGEND	DEFINITION
◇	SET 4" x 4" CONCRETE MONUMENT WITH IRON STAMPED "PRM, LD, M&T"
◆	ROAD 4" x 4" CONCRETE MONUMENT WITH IRON STAMPED "PRM, LD, M&T"
●	SET 1/2" x 1/2" x 1/2" IRON STAMPED "PRM, LD, M&T"

### HATCHINGS USED IN THIS PLAT

HATCHING	DEFINITION
	DENOTES UPLAND BUFFERS ADJACENT TO PRESERVED WETLANDS AND ENLARGED BY A REQUIRED CONSERVATION EASEMENT TO THE ST. JOHNS RIVER WATER MANAGEMENT DISTRICT
	DENOTES PRESERVED WETLANDS
	DENOTES UPLAND BUFFERS ADJACENT TO PRESERVED WETLANDS AS PER APPROVED ENGINEERING PLANS HOWEVER, THESE ARE NOT ENLARGED BY A REQUIRED CONSERVATION EASEMENT TO THE ST. JOHNS RIVER WATER MANAGEMENT DISTRICT



THIS FIRM WAS PROVIDED WITH A PLAT PROPERTY INFORMATION REPORT, PREPARED BY FIDELITY NATIONAL TITLE INSURANCE COMPANY, DATED JULY 23, 2021, WHICH FOUND:

a) CONSERVATION EASEMENT AS SET FORTH BY INSTRUMENT RECORDED IN OFFICIAL RECORDS BOOK 4122, PAGE 1897.

SURVEYOR'S COMMENT: THIS CONSERVATION EASEMENT IS GRAPHICALLY SHOWN ON THE FACE OF THIS PLAT.

b) CONSERVATION EASEMENT AS SET FORTH BY INSTRUMENT RECORDED IN OFFICIAL RECORDS BOOK 4699, PAGE 258.

SURVEYOR'S COMMENT: THIS CONSERVATION EASEMENT IS GRAPHICALLY SHOWN ON THE FACE OF THIS PLAT.

c) NON EXCLUSIVE GRANT OF UNDERGROUND ELECTRIC UTILITY EASEMENT RECORDED IN OFFICIAL RECORDS BOOK 5258, PAGE 179.

SURVEYOR'S COMMENT: THESE EASEMENTS ARE GRAPHICALLY SHOWN ON THE FACE OF THIS PLAT.

### CERTIFICATE OF CLERK

THIS IS TO CERTIFY THAT THIS PLAT HAS BEEN EXAMINED AND APPROVED AND THAT IT COMPLIES IN FORM WITH THE REQUIREMENTS OF PART 1, CHAPTER 177, FLORIDA STATUTES, AND IS RECORDED IN MAP BOOK \_\_\_\_\_ PAGE(S) \_\_\_\_\_ OF THE PUBLIC RECORDS OF ST. JOHNS COUNTY, FLORIDA ON THIS \_\_\_\_\_ DAY OF \_\_\_\_\_ 2021.

BRANDON J. PATTY, CLERK  
CLERK OF THE CIRCUIT COURT & COMPTROLLER

### BOARD OF COUNTY COMMISSIONERS

#### CERTIFICATE OF APPROVAL AND ACCEPTANCE

THIS IS TO CERTIFY THAT THIS PLAT OF "ARBORS at RIVERTOWN-PHASE THREE" HAS BEEN EXAMINED AND ACCEPTED BY THE BOARD OF COUNTY COMMISSIONERS OF ST. JOHNS COUNTY, FLORIDA, ON THIS \_\_\_\_\_ DAY OF \_\_\_\_\_ 2021. THIS ACCEPTANCE SHALL NOT BE DEEMED AS REQUIRING CONSTRUCTION OR MAINTENANCE BY ST. JOHNS COUNTY OF ANY PART OF SAID SUBDIVISION.

BY: \_\_\_\_\_  
BOARD OF COUNTY COMMISSIONERS OF ST. JOHNS COUNTY, FLORIDA.

### SURVEYOR'S CERTIFICATE

KNOW ALL MEN BY THESE PRESENTS, THAT THE UNDERSIGNED, BEING CURRENTLY LICENSED AND REGISTERED BY THE STATE OF FLORIDA AS A LAND SURVEYOR, DOES HEREBY CERTIFY THAT THE ABOVE PLAT WAS MADE UNDER THE UNDERSIGNED'S RESPONSIBLE DIRECTION AND SUPERVISION AND THAT THE PLAT COMPLIES WITH ALL THE SURVEY REQUIREMENTS FOR CHAPTER 177, PART 1, PLATTING, OF THE FLORIDA STATUTES.

JONATHAN B. BOWAN, STATE OF FLORIDA  
REGISTERED LAND SURVEYOR, CERTIFICATE No. 4500

### CERTIFICATE OF APPROVAL-GROWTH MANAGEMENT DEPARTMENT

THIS IS TO CERTIFY THAT THIS PLAT OF "ARBORS at RIVERTOWN - PHASE THREE", HAS BEEN EXAMINED AND APPROVED BY THE COUNTY GROWTH MANAGEMENT DEPARTMENT FOR ST. JOHNS COUNTY, ON THIS \_\_\_\_\_ DAY OF \_\_\_\_\_ 2021.

BY: \_\_\_\_\_  
DIRECTOR, GROWTH MANAGEMENT DEPARTMENT

### CERTIFICATE OF PLAT REVIEW

THIS IS TO CERTIFY THAT THIS PLAT HAS BEEN REVIEWED FOR CONFORMITY TO FLORIDA STATUTES CHAPTER 177, PART 1, PLATTING, BY THE OFFICE OF THE COUNTY SURVEYOR FOR ST. JOHNS COUNTY, FLORIDA, ON THIS \_\_\_\_\_ DAY OF \_\_\_\_\_ 2021.

GAIL OLIVER, PLS, COUNTY SURVEYOR  
PROFESSIONAL LAND SURVEYOR AND MAPPER  
LICENSE No. 4564

### CERTIFICATE OF REVIEW-COUNTY ATTORNEY

THIS IS TO CERTIFY THAT THIS PLAT OF "ARBORS at RIVERTOWN-PHASE THREE", HAS BEEN EXAMINED AND REVIEWED BY THE OFFICE OF THE ST. JOHNS COUNTY ATTORNEY FOR ST. JOHNS COUNTY, FLORIDA, ON THIS \_\_\_\_\_ DAY OF \_\_\_\_\_ 2021.

OFFICE OF THE ST. JOHNS COUNTY ATTORNEY

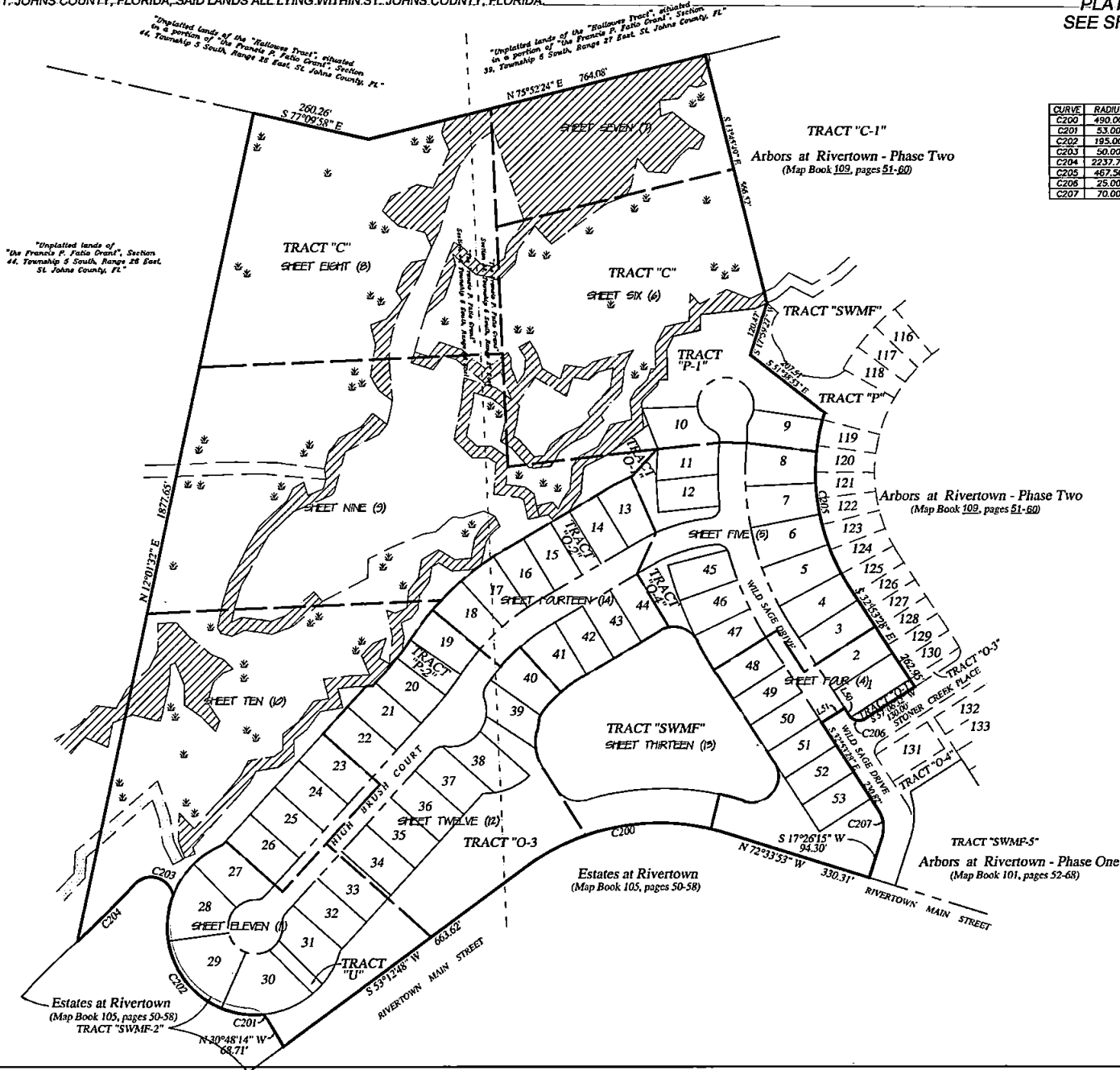
Prepared by:  
**A & J Land Surveyors, Inc.**  
5847 Luella Street  
Jacksonville, Florida 32207  
T (904) 346.1733  
F (904) 346.1736

# Arbors at Rivertown - Phase Three

A PARCEL OF LAND, BEING A PORTION OF THE UNPLATTED LANDS OF THE "FRANCIS P. FATIO GRANT", IN SECTION 39, TOWNSHIP 5 SOUTH, RANGE 27 EAST, A PORTION OF THE UNPLATTED LANDS OF THE "FRANCIS P. FATIO GRANT", IN SECTION 44, TOWNSHIP 5 SOUTH, RANGE 26 EAST, AND A REPLAT OF A PORTION OF TRACT "SWMF-2" (STORM WATER MANAGEMENT FACILITY), AS SHOWN ON THE PLAT OF "ESTATES AT RIVERTOWN, AS RECORDED IN THE PLAT THEREOF, RECORDED IN MAP BOOK 105, PAGES 50 THROUGH 58 OF THE PUBLIC RECORDS OF ST. JOHNS COUNTY, FLORIDA, SAID LANDS ALL LYING WITHIN ST. JOHNS COUNTY, FLORIDA.

SEE SHEET TWO (2) FOR LEGEND,  
GENERAL NOTES, ABBREVIATIONS and  
PLAT TITLE LETTER COMMENTS  
SEE SHEET THREE (3) FOR KEY MAP

KEY MAP  
(Not to Scale)



CURVE TABLE FOR BOUNDARY DATA

CURVE	RADIUS	DELTA ANGLE	ARC LENGTH	CHORD BEARING	CHORD LENGTH
C200	490.00'	54°13'19"	463.71'	S 80°19'27" W	446.60'
C201	53.00'	16°26'45"	15.21'	N 39°01'36" W	15.16'
C202	195.00'	116°33'24"	396.69'	N 37°06'42" W	331.74'
C203	50.00'	128°27'31"	110.36'	N 74°04'07" W	89.28'
C204	2237.79'	4°35'45"	179.50'	S 45°00'00" E	179.48'
C205	467.50'	49°35'43"	404.67'	N 08°05'36" E	392.15'
C206	25.00'	80°00'00"	38.27'	N 77°53'28" W	35.36'
C207	70.00'	50°19'43"	61.49'	S 07°43'37" E	59.53'

LINE TABLE FOR BOUNDARY DATA

LINE	BEARING	DISTANCE
L50	N 32°53'28" W	19.74'
L51	S 57°06'32" W	60.00'

"Unplatted lands of 'The Francis P. Fatio Grant', Section 44, Township 5 South, Range 26 East, St. Johns County, FL."

"Unplatted lands of the 'Holloway Tract', situated in a portion of 'The Francis P. Fatio Grant', Section 44, Township 5 South, Range 26 East, St. Johns County, FL."

"Unplatted lands of the 'Redwood Tract', situated in a portion of 'The Francis P. Fatio Grant', Section 39, Township 5 South, Range 27 East, St. Johns County, FL."

Estates at Rivertown  
(Map Book 105, pages 50-58)  
TRACT "SWMF-2"

Estates at Rivertown  
(Map Book 105, pages 50-58)

Arbors at Rivertown - Phase Two  
(Map Book 109, pages 51-60)

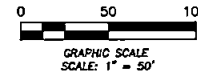
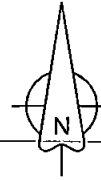
Arbors at Rivertown - Phase Two  
(Map Book 109, pages 51-60)

Arbors at Rivertown - Phase One  
(Map Book 101, pages 52-68)

Prepared by:  
**A & J Land Surveyors, Inc.**  
5847 Luella Street  
Jacksonville, Florida 32207  
T (904) 346.1733  
F (904) 346.1736

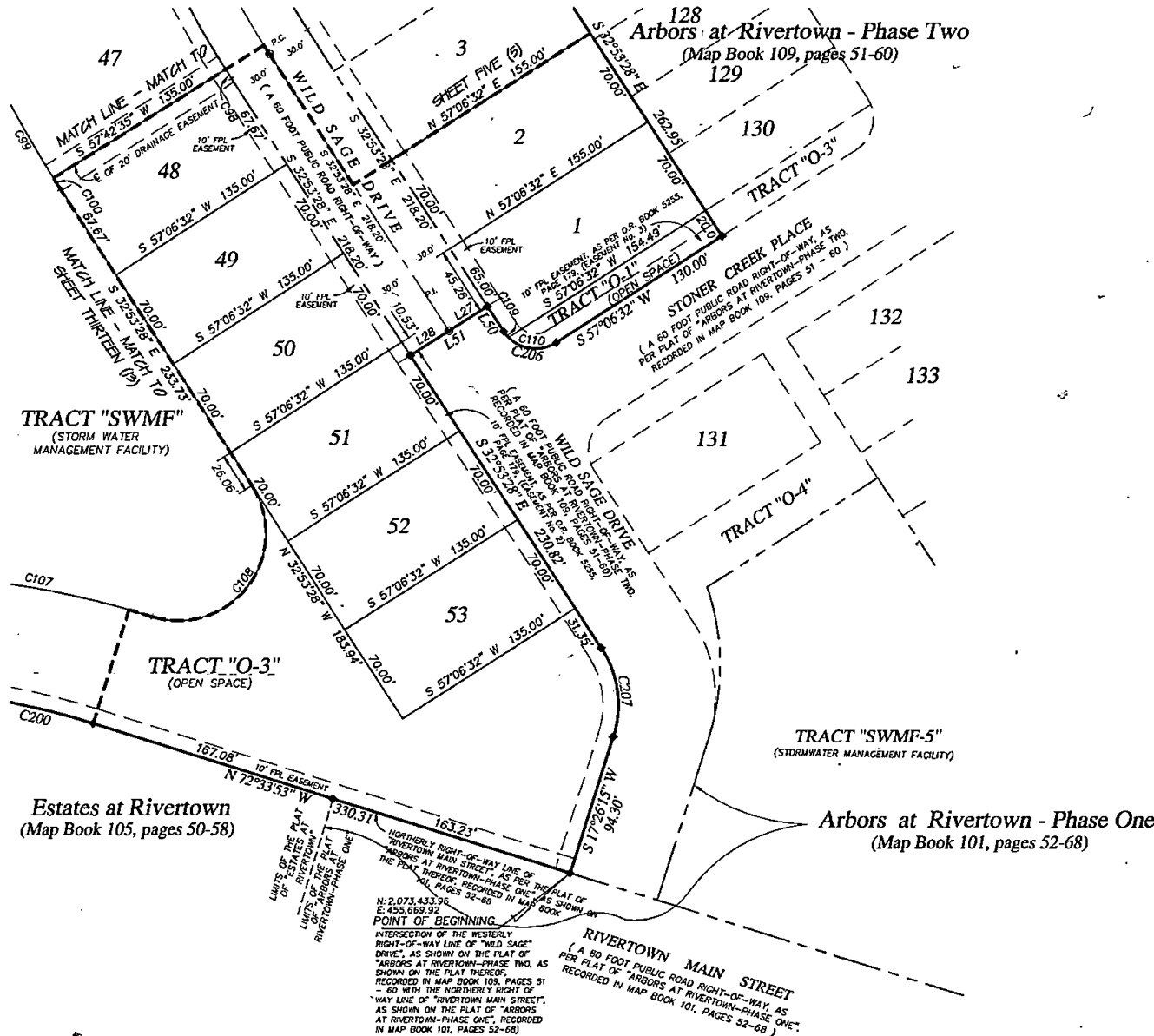
# Arbors at Rivertown - Phase Three

A PARCEL OF LAND, BEING A PORTION OF THE UNPLATTED LANDS OF THE "FRANCIS P. FATIO GRANT", IN SECTION 39, TOWNSHIP 5 SOUTH, RANGE 27 EAST, A PORTION OF THE UNPLATTED LANDS OF THE "FRANCIS P. FATIO GRANT", IN SECTION 44, TOWNSHIP 5 SOUTH, RANGE 26 EAST, AND A REPLAT OF A PORTION OF TRACT "SWMF-2" (STORM WATER MANAGEMENT FACILITY), AS SHOWN ON THE PLAT OF "ESTATES AT RIVERTOWN, AS RECORDED IN THE PLAT THEREOF, RECORDED IN MAP BOOK 105, PAGES 50 THROUGH 58 OF THE PUBLIC RECORDS OF ST. JOHNS COUNTY, FLORIDA, SAID LANDS ALL LYING WITHIN ST. JOHNS COUNTY, FLORIDA.



MAP BOOK \_\_\_\_\_ PAGE \_\_\_\_\_  
SHEET FOUR (4) of FOURTEEN (14) SHEETS

SEE SHEET TWO (2) FOR LEGEND,  
GENERAL NOTES, ABBREVIATIONS and  
PLAT TITLE LETTER COMMENTS  
SEE SHEET THREE (3) FOR KEY MAP



CURVE TABLE FOR BOUNDARY DATA

CURVE	RADIUS	DELTA ANGLE	ARC LENGTH	CHORD BEARING	CHORD LENGTH
C200	490.00'	54°13'19"	483.71'	S 80°19'27" W	448.60'
C206	25.00'	90°00'00"	39.27'	N 77°53'28" W	35.36'
C207	70.00'	50°19'43"	61.49'	S 07°43'37" E	59.53'

CURVE TABLE FOR LOTS AND TRACTS DATA

CURVE	RADIUS	DELTA ANGLE	ARC LENGTH	CHORD BEARING	CHORD LENGTH
C98	682.50'	0°36'02"	7.16'	S 32°35'27" E	7.16'
C99	817.50'	5°45'00"	82.04'	S 30°00'58" E	82.01'
C100	817.50'	0°36'02"	8.57'	S 32°35'27" E	8.57'
C107	587.22'	34°17'12"	351.40'	N 89°35'24" W	346.18'
C108	58.00'	140°28'40"	142.17'	N 37°19'52" E	109.16'
C109	25.00'	11°32'13"	5.03'	S 38°39'34" E	5.03'
C110	25.00'	78°27'47"	34.24'	S 83°39'34" E	31.62'

LINE TABLE FOR BOUNDARY DATA

LINE	BEARING	DISTANCE
L50	N 32°53'28" W	19.74'
L51	S 57°06'32" W	60.00'

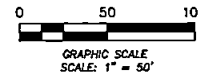
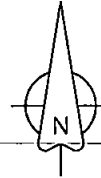
LINE TABLE FOR RIGHT-OF-WAY DATA

LINE	BEARING	DISTANCE
L27	S 57°06'32" W	30.00'
L28	S 57°06'32" W	30.00'

Prepared by:  
**A&J Land Surveyors, Inc.**  
5847 Luella Street  
Jacksonville, Florida 32207  
T (904) 346.1733  
F (904) 346.1736

# Arbors at Rivertown - Phase Three

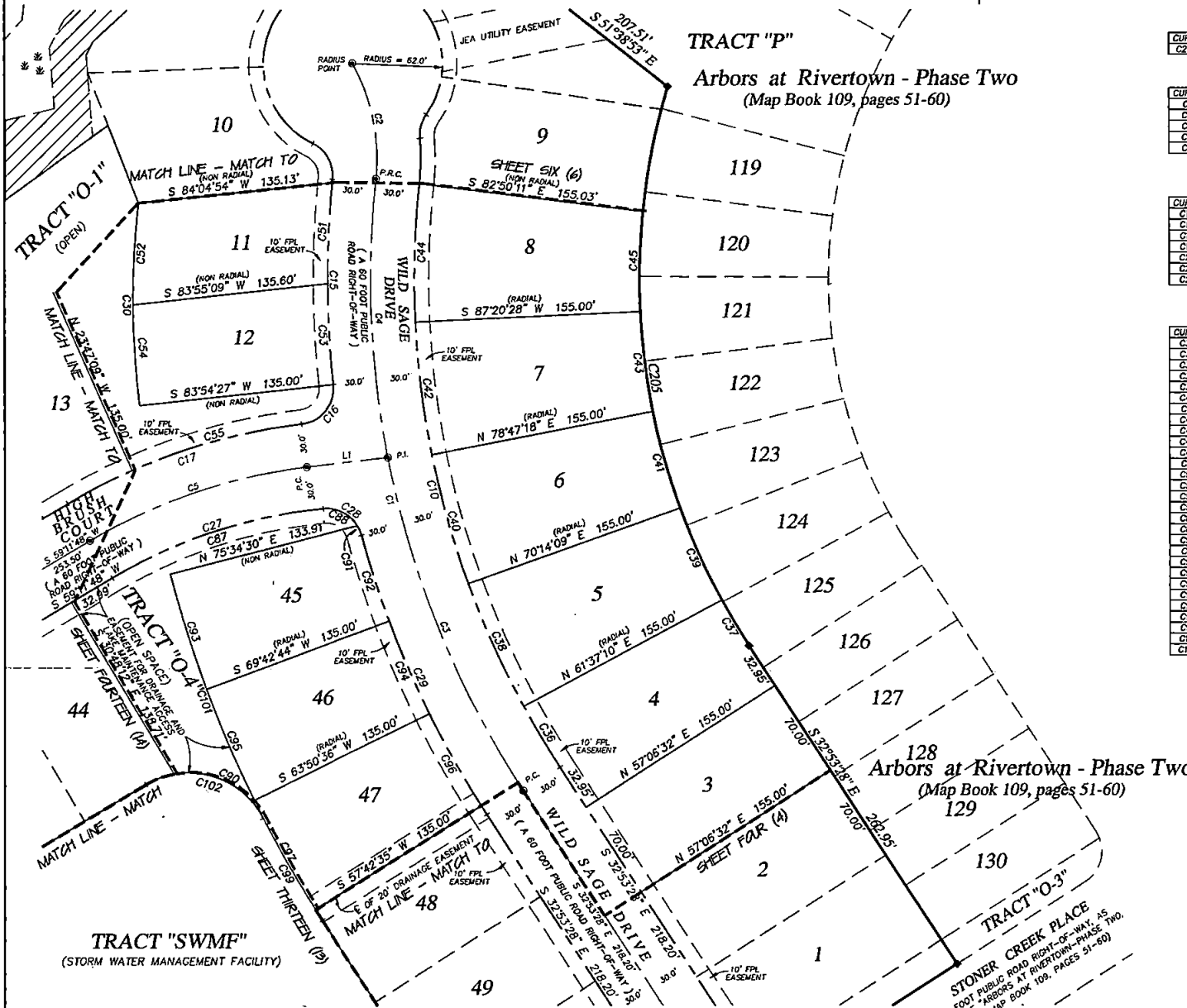
A PARCEL OF LAND, BEING A PORTION OF THE UNPLATTED LANDS OF THE "FRANCIS P. FATIO GRANT", IN SECTION 39, TOWNSHIP 5 SOUTH, RANGE 27 EAST, A PORTION OF THE UNPLATTED LANDS OF THE "FRANCIS P. FATIO GRANT", IN SECTION 44, TOWNSHIP 5 SOUTH, RANGE 26 EAST, AND A REPLAT OF A PORTION OF TRACT "SWMF-2" (STORM WATER MANAGEMENT FACILITY), AS SHOWN ON THE PLAT OF "ESTATES AT RIVERTOWN, AS RECORDED IN THE PLAT THEREOF, RECORDED IN MAP BOOK 105, PAGES 50 THROUGH 58 OF THE PUBLIC RECORDS OF ST. JOHNS COUNTY, FLORIDA, SAID LANDS ALL LYING WITHIN ST. JOHNS COUNTY, FLORIDA.



MAP BOOK \_\_\_\_\_ PAGE \_\_\_\_\_

SHEET FIVE (5) of FOURTEEN (14) SHEETS

SEE SHEET TWO (2) FOR LEGEND,  
GENERAL NOTES, ABBREVIATIONS and  
PLAT TITLE LETTER COMMENTS  
SEE SHEET THREE (3) FOR KEY MAP



CURVE TABLE FOR BOUNDARY DATA

CURVE	RADIUS	DELTA ANGLE	ARC LENGTH	CHORD BEARING	CHORD LENGTH
C205	467.50'	49°35'43"	404.67'	S 08°05'36" E	392.15'

CURVE TABLE FOR CENTERLINE DATA

CURVE	RADIUS	DELTA ANGLE	ARC LENGTH	CHORD BEARING	CHORD LENGTH
C1	652.50'	39°04'22"	444.97'	S 13°21'17" E	436.40'
C2	135.00'	35°15'34"	83.08'	N 11°26'52" W	81.77'
C3	652.50'	29°32'10"	293.65'	S 21°52'31" E	249.41'
C4	652.50'	17°02'12"	194.02'	S 02°20'12" E	193.30'
C5	380.00'	24°06'41"	159.91'	S 71°15'08" W	158.73'

CURVE TABLE FOR RIGHT-OF-WAY DATA

CURVE	RADIUS	DELTA ANGLE	ARC LENGTH	CHORD BEARING	CHORD LENGTH
C10	622.50'	39°04'22"	424.51'	S 13°21'17" E	416.34'
C19	682.50'	11°37'37"	142.47'	S 00°05'37" E	142.21'
C16	25.00'	89°22'54"	39.00'	N 38°37'01" E	39.16'
C17	410.00'	24°06'41"	172.54'	S 71°15'08" W	171.23'
C27	350.00'	25°25'08"	185.27'	S 71°54'22" W	184.00'
C28	25.00'	80°21'59"	35.07'	N 55°12'05" W	32.26'
C29	682.50'	17°52'23"	212.90'	S 23°57'17" E	212.04'

CURVE TABLE FOR LOTS AND TRACTS DATA

CURVE	RADIUS	DELTA ANGLE	ARC LENGTH	CHORD BEARING	CHORD LENGTH
C30	601.25'	13°23'46"	140.58'	S 00°15'52" E	140.26'
C36	622.50'	4°30'38"	49.01'	S 30°38'09" E	48.99'
C37	467.50'	4°30'38"	36.80'	S 30°38'09" E	36.79'
C38	622.50'	8°36'59"	93.61'	S 24°04'21" E	93.52'
C39	467.50'	8°36'58"	70.30'	S 24°04'21" E	70.24'
C40	622.50'	8°33'10"	92.92'	S 15°29'17" E	92.84'
C41	467.50'	8°33'09"	69.78'	S 15°29'17" E	69.72'
C42	622.50'	8°33'10"	92.92'	S 06°56'07" E	92.84'
C43	467.50'	8°33'09"	69.78'	S 06°56'07" E	69.72'
C44	622.50'	8°30'27"	96.05'	S 01°45'41" W	95.96'
C45	467.50'	8°30'55"	69.48'	S 01°35'55" W	69.42'
C51	682.50'	5°52'47"	70.04'	S 02°44'54" W	70.01'
C52	601.25'	06°43'05"	70.50'	S 03°04'29" W	70.46'
C53	682.50'	5°52'58"	70.07'	S 03°07'58" E	70.04'
C54	601.25'	06°40'41"	70.08'	S 03°07'24" E	70.04'
C55	410.00'	17°05'37"	122.32'	S 74°45'40" W	121.87'
C87	350.00'	25°25'06"	155.27'	S 71°54'22" W	154.00'
C88	25.00'	63°42'57"	27.80'	N 63°31'35" W	26.39'
C90	58.00'	73°04'04"	73.97'	N 63°40'29" W	69.05'
C91	25.00'	16°39'02"	7.27'	N 23°20'36" W	7.24'
C92	682.50'	5°18'22"	62.81'	S 17°39'16" E	62.75'
C93	817.50'	5°52'16"	83.78'	S 17°21'17" E	83.74'
C94	682.50'	5°52'45"	70.03'	S 23°13'50" E	70.00'
C95	817.50'	5°52'39"	83.86'	S 23°13'45" E	83.82'
C96	682.50'	6°07'13"	72.60'	S 29°13'49" E	72.67'
C97	817.50'	6°07'21"	87.36'	S 29°13'45" E	87.31'
C99	817.50'	5°45'00"	82.04'	S 30°00'58" E	82.01'
C101	817.50'	12°43'18"	181.62'	S 20°46'48" E	181.15'
C102	58.00'	83°39'45"	94.81'	N 73°58'20" W	84.60'

LINE TABLE FOR CENTERLINE DATA

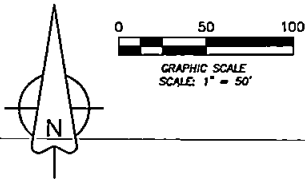
LINE	BEARING	DISTANCE
L1	S 83°18'29" W	56.68'

NOTICE: UPLAND BUFFERS WILL REMAIN NATURALLY VEGETATED AND UNDISTURBED

Prepared by:  
**A & J Land Surveyors, Inc.**  
5847 Luella Street  
Jacksonville, Florida 32207  
T (904) 346.1733  
F (904) 346.1736

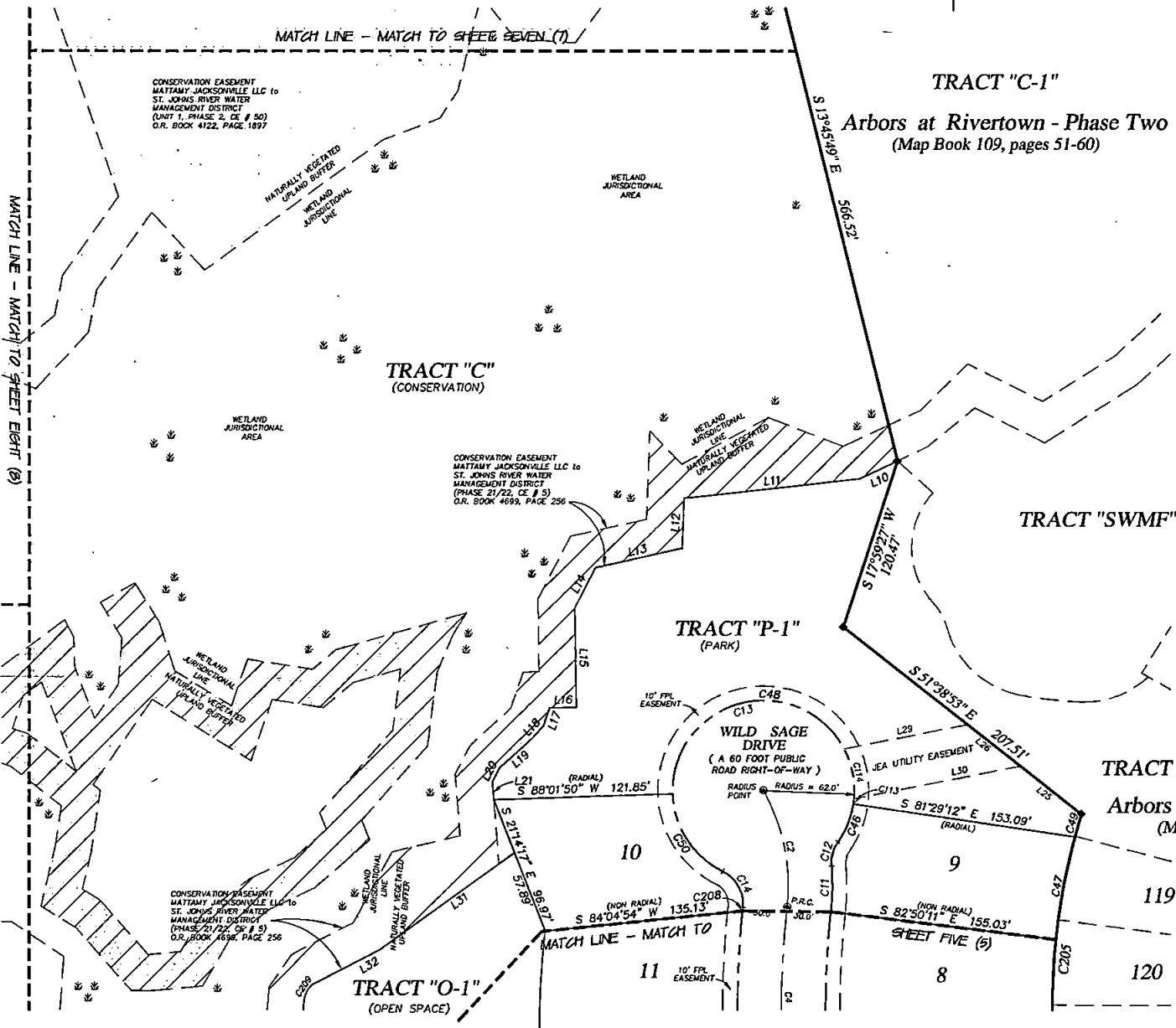
# Arbors at Rivertown - Phase Three

A PARCEL OF LAND, BEING A PORTION OF THE UNPLATTED LANDS OF THE "FRANCIS P. FATIO GRANT", IN SECTION 39, TOWNSHIP 5 SOUTH, RANGE 27 EAST, A PORTION OF THE UNPLATTED LANDS OF THE "FRANCIS P. FATIO GRANT", IN SECTION 44, TOWNSHIP 5 SOUTH, RANGE 26 EAST, AND A REPLAT OF A PORTION OF TRACT "SWMF-2" (STORM WATER MANAGEMENT FACILITY), AS SHOWN ON THE PLAT OF "ESTATES AT RIVERTOWN, AS RECORDED IN THE PLAT THEREOF, RECORDED IN MAP BOOK 105, PAGES 50 THROUGH 58 OF THE PUBLIC RECORDS OF ST. JOHNS COUNTY, FLORIDA, SAID LANDS ALL LYING WITHIN ST. JOHNS COUNTY, FLORIDA.



MAP BOOK \_\_\_\_\_ PAGE \_\_\_\_\_  
 SHEET SIX (6) of FOURTEEN (14) SHEETS

SEE SHEET TWO (2) FOR LEGEND,  
 GENERAL NOTES, ABBREVIATIONS and  
 PLAT TITLE LETTER COMMENTS  
 SEE SHEET THREE (3) FOR KEY MAP



CURVE TABLE FOR BOUNDARY DATA

CURVE	RADIUS	DELTA ANGLE	ARC LENGTH	CHORD BEARING	CHORD LENGTH
C205	467.50'	49°35'43"	404.67'	S 08°05'36" E	392.19'

CURVE TABLE FOR CENTERLINE DATA

CURVE	RADIUS	DELTA ANGLE	ARC LENGTH	CHORD BEARING	CHORD LENGTH
C2	133.00'	35°54'34"	83.88'	N 21°28'22" E	81.77'
C4	632.50'	17°02'12"	194.02'	S 02°20'12" E	193.30'

CURVE TABLE FOR RIGHT-OF-WAY DATA

CURVE	RADIUS	DELTA ANGLE	ARC LENGTH	CHORD BEARING	CHORD LENGTH
C11	165.00'	10°57'44"	31.57'	N 00°42'03" E	31.52'
C12	25.00'	39°40'45"	17.31'	S 15°03'33" W	16.97'
C13	62.00'	278°23'18"	301.25'	S 75°42'17" W	81.03'
C14	25.00'	69°22'53"	30.27'	N 28°46'06" W	28.46'

CURVE TABLE FOR LOTS AND TRACTS DATA

CURVE	RADIUS	DELTA ANGLE	ARC LENGTH	CHORD BEARING	CHORD LENGTH
C48	62.00'	28°23'03"	28.55'	N 21°42'22" E	28.30'
C47	467.50'	8°50'09"	72.09'	S 10°16'27" W	72.02'
C49	62.00'	190°28'58"	206.12'	N 86°43'41" W	123.48'
C49	467.50'	2°00'44"	16.42'	S 15°41'53" W	16.42'
C50	62.00'	61°31'12"	66.57'	S 32°43'46" E	63.42'
C208	682.50'	0°11'54"	2.35'	S 05°47'14" W	2.36'
C209	15.00'	57°20'56"	15.01'	S 33°55'22" W	14.59'

CURVE TABLE FOR EASEMENT DATA

CURVE	RADIUS	DELTA ANGLE	ARC LENGTH	CHORD BEARING	CHORD LENGTH
C113	62.00'	37°4'48"	3.51'	N 06°33'24" E	3.51'
C114	62.00'	32°47'24"	35.48'	N 11°07'42" W	35.00'

LINE TABLE FOR LOTS AND TRACTS DATA

LINE	BEARING	DISTANCE
L10	N 64°52'50" E	28.69'
L11	N 83°35'01" E	120.56'
L12	N 02°05'15" E	34.60'
L13	N 77°11'23" E	60.74'
L14	N 27°05'38" E	31.05'
L15	N 00°56'00" W	68.70'
L16	N 88°56'07" E	18.10'
L17	N 18°50'18" E	13.16'
L18	N 42°28'03" E	12.78'
L19	N 47°12'42" E	28.87'
L20	N 27°19'24" E	10.68'
L21	N 04°36'04" W	12.31'

LINE TABLE FOR LOTS AND TRACTS DATA

LINE	BEARING	DISTANCE
L25	N 51°38'53" W	52.81'
L26	N 51°38'53" W	48.04'
L29	N 78°52'18" E	86.28'
L30	N 78°52'18" E	83.45'
L31	N 53°56'27" E	113.67'
L32	N 62°35'40" E	49.56'

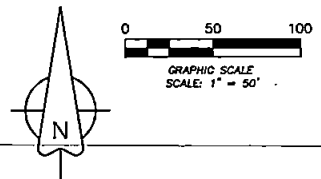
NOTICE: UPLAND BUFFERS WILL REMAIN NATURALLY VEGETATED AND UNDISTURBED

Prepared by:  
**A & J Land Surveyors, Inc.**  
 5847 Luella Street  
 Jacksonville, Florida 32207  
 T (904) 346.1733  
 F (904) 346.1736



# Arbors at Rivertown-Phase Three

A PARCEL OF LAND, BEING A PORTION OF THE UNPLATTED LANDS OF THE "FRANCIS P. FATIO GRANT", IN SECTION 39, TOWNSHIP 5 SOUTH, RANGE 27 EAST, A PORTION OF THE UNPLATTED LANDS OF THE "FRANCIS P. FATIO GRANT", IN SECTION 44, TOWNSHIP 5 SOUTH, RANGE 26 EAST, AND A REPLAT OF A PORTION OF TRACT "SWMF-2" (STORM WATER MANAGEMENT FACILITY), AS SHOWN ON THE PLAT OF "ESTATES AT RIVERTOWN, AS RECORDED IN THE PLAT THEREOF, RECORDED IN MAP BOOK 105, PAGES 50 THROUGH 58 OF THE PUBLIC RECORDS OF ST. JOHNS COUNTY, FLORIDA, SAID LANDS ALL LYING WITHIN ST. JOHNS COUNTY, FLORIDA.

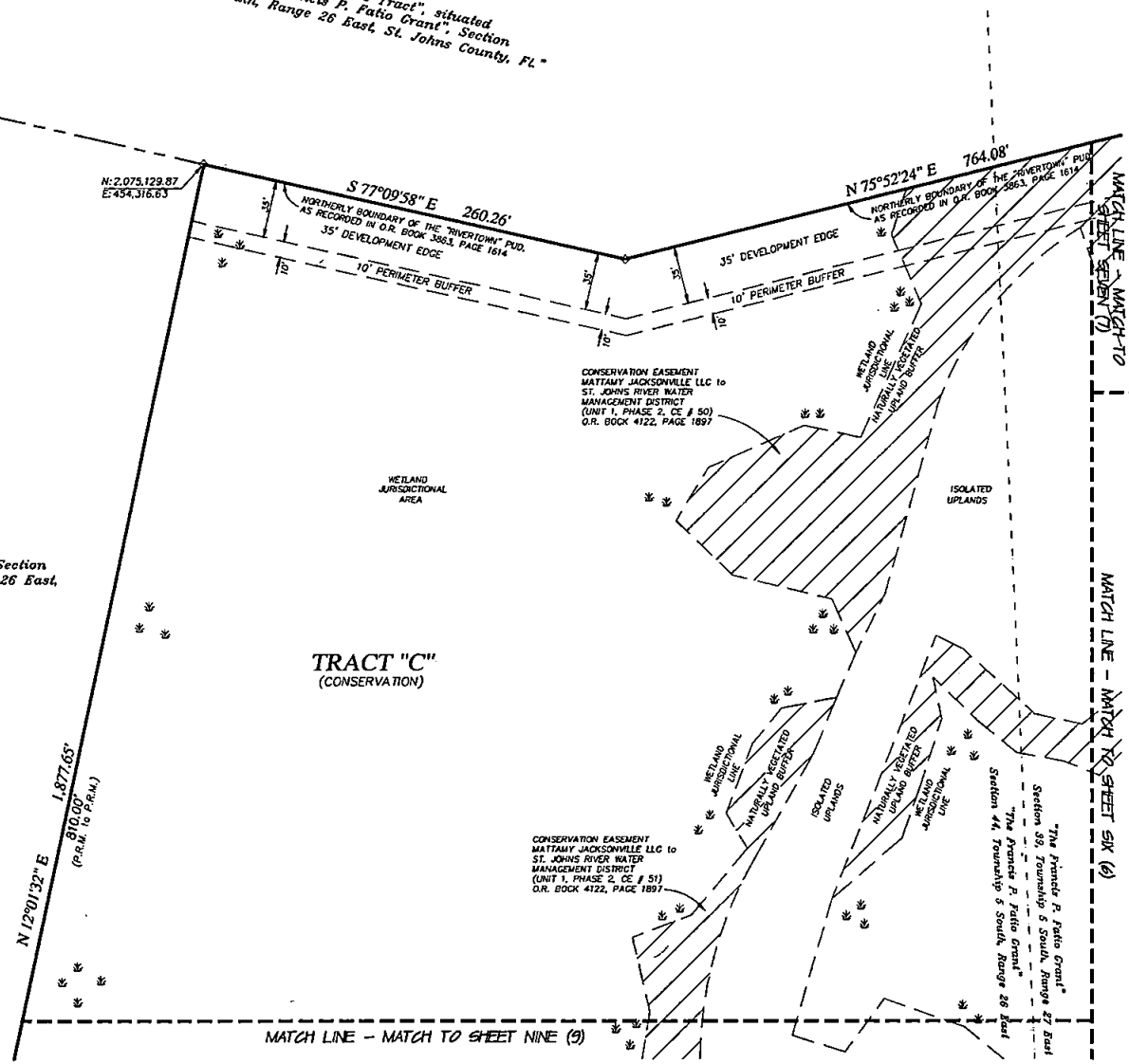


MAP BOOK \_\_\_\_\_ PAGE \_\_\_\_\_  
 SHEET EIGHT (8) of FOURTEEN (14) SHEETS

SEE SHEET TWO (2) FOR LEGEND,  
 GENERAL NOTES, ABBREVIATIONS and  
 PLAT TITLE LETTER COMMENTS  
 SEE SHEET THREE (3) FOR KEY MAP

"Unplatted lands of the 'Hallows Tract', situated in a portion of 'the Francis P. Fatio Grant', Section 44, Township 5 South, Range 26 East, St. Johns County, FL."

"Unplatted lands of 'the Francis P. Fatio Grant', Section 44, Township 5 South, Range 26 East, St. Johns County, FL."



CONSERVATION EASEMENT  
 MATTAMY JACKSONVILLE LLC to  
 ST. JOHNS RIVER WATER  
 MANAGEMENT DISTRICT  
 (UNIT 1, PHASE 2, CE # 50)  
 O.R. BOOK 4122, PAGE 1897

CONSERVATION EASEMENT  
 MATTAMY JACKSONVILLE LLC to  
 ST. JOHNS RIVER WATER  
 MANAGEMENT DISTRICT  
 (UNIT 1, PHASE 2, CE # 51)  
 O.R. BOOK 4122, PAGE 1897

"The Francis P. Fatio Grant",  
 Section 39, Township 5 South, Range 27 East  
 Section 44, Township 5 South, Range 26 East

NOTICE: UPLAND BUFFERS WILL REMAIN  
 NATURALLY VEGETATED AND UNDISTURBED

Prepared by:  
**A&J Land Surveyors, Inc.**  
 5847 Luella Street  
 Jacksonville, Florida 32207  
 T (904) 346.1733  
 F (904) 346.1736

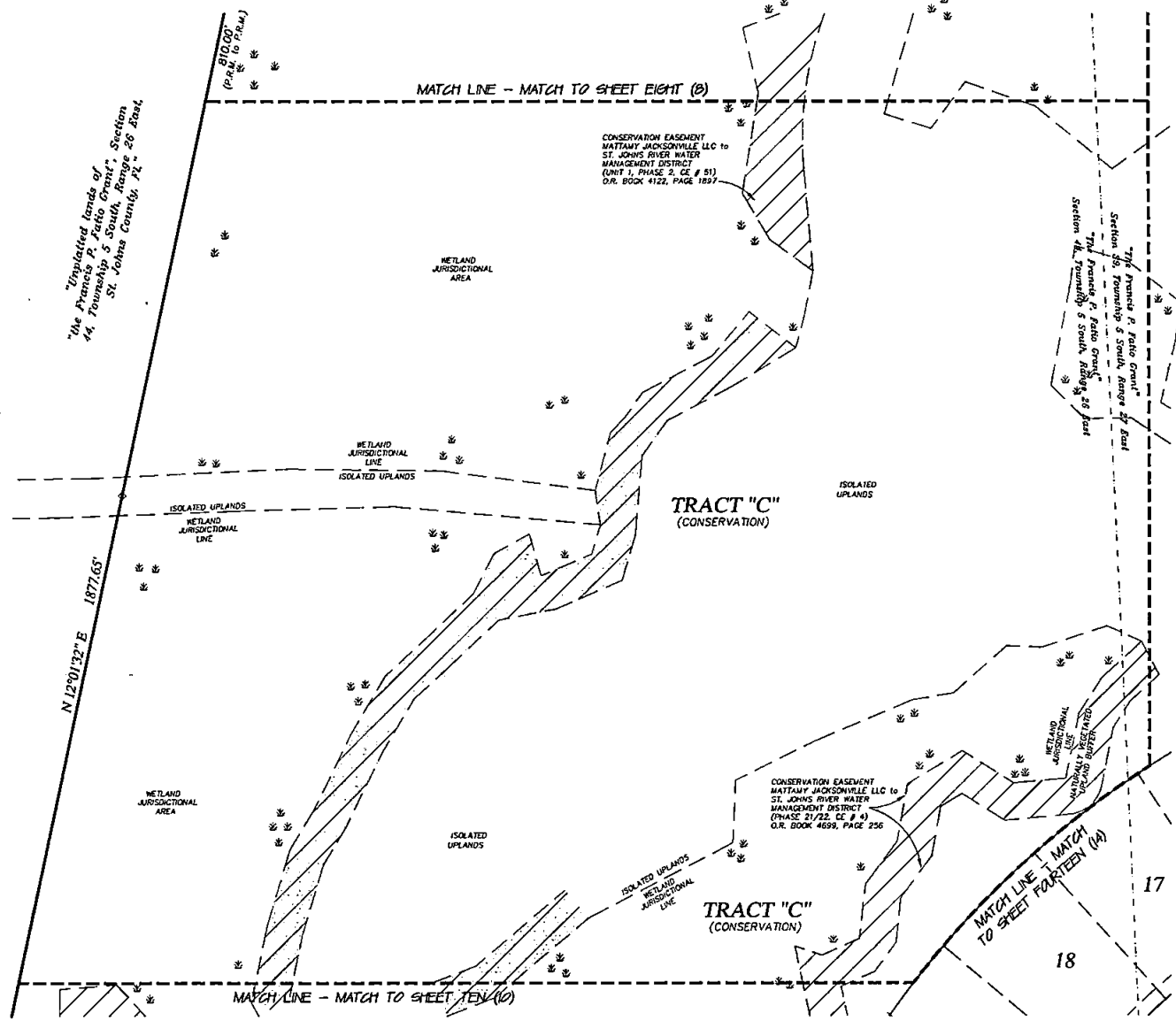
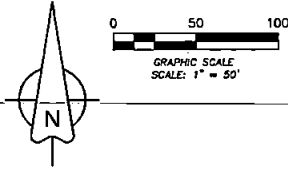
# Arbors at Rivertown - Phase Three

A PARCEL OF LAND, BEING A PORTION OF THE UNPLATTED LANDS OF THE "FRANCIS P. FATIO GRANT", IN SECTION 39, TOWNSHIP 5 SOUTH, RANGE 27 EAST, A PORTION OF THE UNPLATTED LANDS OF THE "FRANCIS P. FATIO GRANT", IN SECTION 44, TOWNSHIP 5 SOUTH, RANGE 26 EAST, AND A REPLAT OF A PORTION OF TRACT "SWMF-2" (STORM WATER MANAGEMENT FACILITY), AS SHOWN ON THE PLAT OF "ESTATES AT RIVERTOWN, AS RECORDED IN THE PLAT THEREOF, RECORDED IN MAP BOOK 105, PAGES 50 THROUGH 58 OF THE PUBLIC RECORDS OF ST. JOHNS COUNTY, FLORIDA, SAID LANDS ALL LYING WITHIN ST. JOHNS COUNTY, FLORIDA.

MAP BOOK \_\_\_\_\_ PAGE \_\_\_\_\_

SHEET NINE (9) of FOURTEEN (14) SHEETS

SEE SHEET TWO (2) FOR LEGEND,  
GENERAL NOTES, ABBREVIATIONS and  
PLAT TITLE LETTER COMMENTS  
SEE SHEET THREE (3) FOR KEY MAP



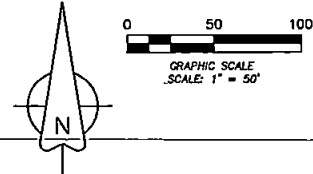
NOTICE: UPLAND BUFFERS WILL REMAIN NATURALLY VEGETATED AND UNDISTURBED

Prepared by:  
**A & J Land Surveyors, Inc.**  
5847 Lucella Street  
Jacksonville, Florida 32207  
T (904) 346.1733  
F (904) 346.1736



# Arbors at Rivertown - Phase Three

A PARCEL OF LAND, BEING A PORTION OF THE UNPLATTED LANDS OF THE "FRANCIS P. FATIO GRANT", IN SECTION 39, TOWNSHIP 5 SOUTH, RANGE 27 EAST, A PORTION OF THE UNPLATTED LANDS OF THE "FRANCIS P. FATIO GRANT", IN SECTION 44, TOWNSHIP 5 SOUTH, RANGE 26 EAST, AND A REPLAT OF A PORTION OF TRACT "SWMF-2" (STORM WATER MANAGEMENT FACILITY), AS SHOWN ON THE PLAT OF "ESTATES AT RIVERTOWN, AS RECORDED IN THE PLAT THEREOF, RECORDED IN MAP BOOK 105, PAGES 50 THROUGH 58 OF THE PUBLIC RECORDS OF ST. JOHNS COUNTY, FLORIDA, SAID LANDS ALL LYING WITHIN ST. JOHNS COUNTY, FLORIDA.



MAP BOOK \_\_\_\_\_ PAGE \_\_\_\_\_  
 SHEET ELEVEN (11) of FOURTEEN (14) SHEETS

SEE SHEET TWO (2) FOR LEGEND,  
 GENERAL NOTES, ABBREVIATIONS and  
 PLAT TITLE LETTER COMMENTS  
 SEE SHEET THREE (3) FOR KEY MAP

CURVE TABLE FOR PLAT BOUNDARY

CURVE	RADIUS	DELTA ANGLE	ARC LENGTH	CHORD BEARING	CHORD LENGTH
C201	53.00'	16°26'45"	15.21'	N 39°01'56" W	15.16'
C202	195.00'	116°33'24"	396.69'	N 37°08'42" W	331.74'
C203	50.00'	126°27'31"	110.36'	N 74°04'07" W	89.28'
C204	2237.79'	4°35'45"	179.50'	S 45°00'00" W	179.46'

CURVE TABLE FOR RIGHT-OF-WAY DATA

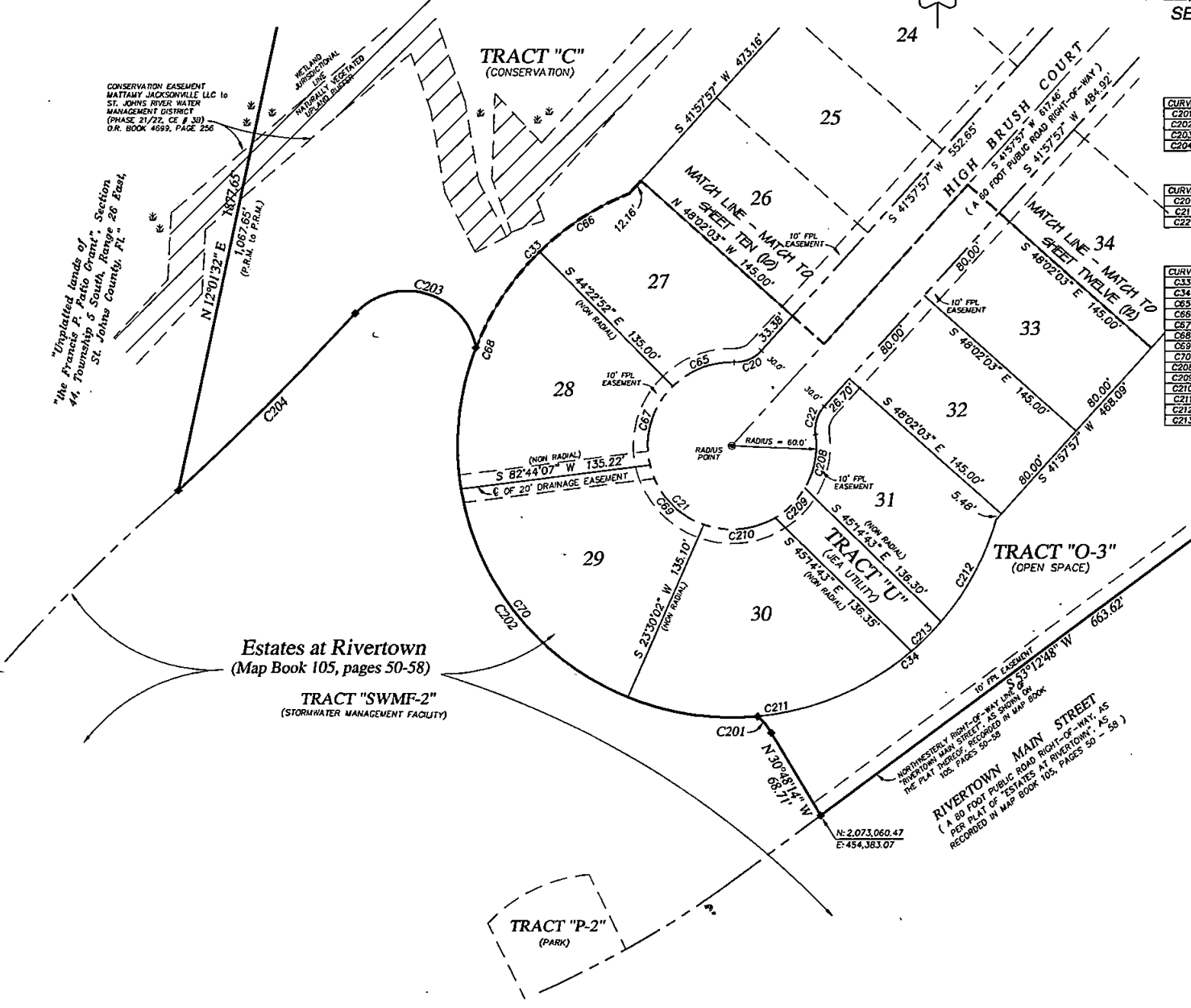
CURVE	RADIUS	DELTA ANGLE	ARC LENGTH	CHORD BEARING	CHORD LENGTH
C20	25.00'	49°40'47"	21.68'	N 65°48'21" E	21.00'
C21	60.00'	279°21'34"	292.54'	S 48°02'03" E	77.65'
C22	25.00'	49°40'47"	21.68'	S 17°07'54" W	21.00'

CURVE TABLE FOR LOTS AND TRACTS DATA

CURVE	RADIUS	DELTA ANGLE	ARC LENGTH	CHORD BEARING	CHORD LENGTH
C33	195.00'	46°58'54"	159.88'	S 44°39'17" W	155.44'
C34	195.00'	68°49'16"	234.22'	N 50°11'58" E	220.40'
C65	60.00'	46°14'27"	48.42'	S 68°31'31" W	47.12'
C66	195.00'	22°35'24"	76.88'	S 55°50'53" W	76.39'
C67	60.00'	58°33'15"	61.32'	S 16°07'40" W	58.68'
C68	195.00'	54°37'52"	185.91'	S 18°14'25" W	178.95'
C69	60.00'	57°18'24"	60.01'	S 41°48'10" E	57.54'
C70	195.00'	58°39'36"	199.59'	S 38°23'40" E	190.99'
C208	80.00'	38°08'16"	39.94'	N 11°21'18" E	39.20'
C209	60.00'	28°57'18"	30.32'	N 44°54'05" E	30.00'
C210	60.00'	60°02'54"	52.53'	N 54°27'41" E	50.67'
C211	195.00'	63°04'26"	214.66'	N 80°44'50" E	203.99'
C212	195.00'	24°35'52"	83.72'	N 28°05'16" E	83.07'
C213	195.00'	8°49'24"	30.03'	N 44°47'54" E	30.00'

LINE TABLE FOR LOTS AND TRACTS DATA

LINE	BEARING	DISTANCE
L24	S 48°02'03" E	1.72'



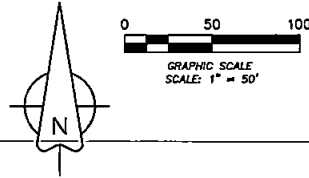
Estates at Rivertown  
 (Map Book 105, pages 50-58)  
 TRACT "SWMF-2"  
 (STORMWATER MANAGEMENT FACILITY)

NOTICE: UPLAND BUFFERS WILL REMAIN  
 NATURALLY VEGETATED AND UNDISTURBED

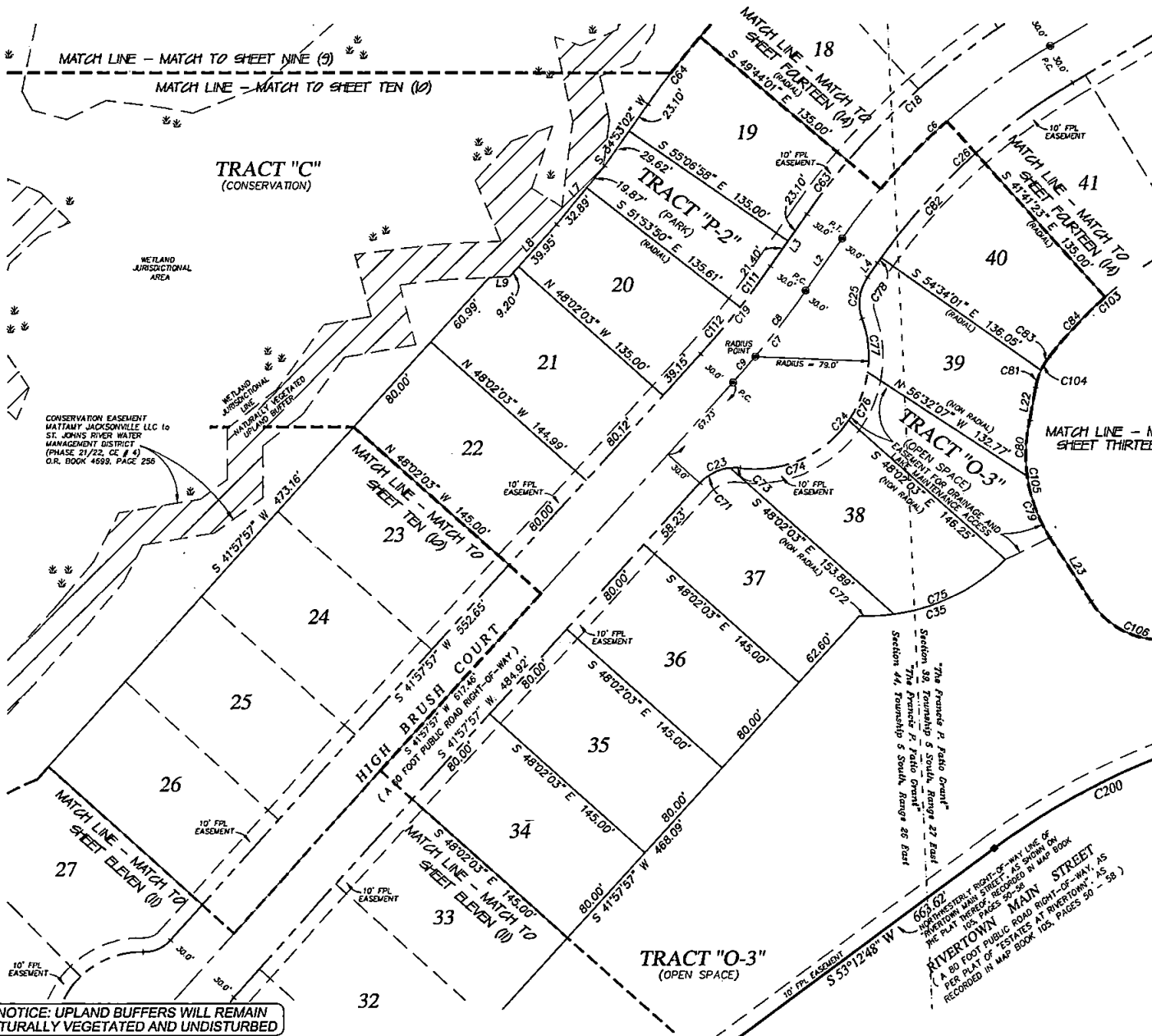
Prepared by:  
**A & J Land Surveyors, Inc.**  
 5847 Luella Street  
 Jacksonville, Florida 32207  
 T (904) 346.1733  
 F (904) 346.1736

# Arbors at Rivertown - Phase Three

A PARCEL OF LAND, BEING A PORTION OF THE UNPLATTED LANDS OF THE "FRANCIS P. FATIO GRANT", IN SECTION 39, TOWNSHIP 5 SOUTH, RANGE 27 EAST, A PORTION OF THE UNPLATTED LANDS OF THE "FRANCIS P. FATIO GRANT", IN SECTION 44, TOWNSHIP 5 SOUTH, RANGE 26 EAST, AND A REPLAT OF A PORTION OF TRACT "SWMF-2" (STORM WATER MANAGEMENT FACILITY), AS SHOWN ON THE PLAT OF "ESTATES AT RIVERTOWN, AS RECORDED IN THE PLAT THEREOF, RECORDED IN MAP BOOK 105, PAGES 50 THROUGH 58 OF THE PUBLIC RECORDS OF ST. JOHNS COUNTY, FLORIDA, SAID LANDS ALL LYING WITHIN ST. JOHNS COUNTY, FLORIDA.



MAP BOOK \_\_\_\_\_ PAGE \_\_\_\_\_  
 SHEET TWELVE (12) of FOURTEEN (14) SHEETS  
 SEE SHEET TWO (2) FOR LEGEND,  
 GENERAL NOTES, ABBREVIATIONS and  
 PLAT TITLE LETTER COMMENTS  
 SEE SHEET THREE (3) FOR KEY MAP



LINE TABLE FOR CENTERLINE DATA

LINE	BEARING	DISTANCE
L2	S 34°53'02" W	44.50'

LINE TABLE FOR RIGHT-OF-WAY DATA

LINE	BEARING	DISTANCE
L3	S 34°53'02" W	44.50'
L4	S 34°53'02" W	12.26'

LINE TABLE FOR LOTS AND TRACTS DATA

LINE	BEARING	DISTANCE
L7	N 39°55'21" E	52.76'
L8	N 41°57'52" E	49.15'
L9	S 87°10'57" W	14.09'
L22	S 107°14'47" W	23.34'
L23	N 32°22'58" W	53.11'

CURVE TABLE FOR PLAT BOUNDARY DATA

CURVE	RADIUS	DELTA ANGLE	ARC LENGTH	CHORD BEARING	CHORD LENGTH
C200	490.00'	54°31'39"	463.71'	S 80°19'27" W	446.80'

CURVE TABLE FOR CENTERLINE DATA

CURVE	RADIUS	DELTA ANGLE	ARC LENGTH	CHORD BEARING	CHORD LENGTH
C6	470.00'	24°18'46"	199.44'	S 47°02'25" W	197.95'
C7	665.00'	7°04'56"	82.20'	N 38°25'30" E	82.15'
C8	665.00'	8°00'35"	88.14'	N 37°23'19" E	88.13'
C9	665.00'	2°04'21"	24.05'	N 40°55'47" E	24.05'

CURVE TABLE FOR RIGHT-OF-WAY DATA

CURVE	RADIUS	DELTA ANGLE	ARC LENGTH	CHORD BEARING	CHORD LENGTH
C18	500.00'	24°18'46"	212.17'	S 47°02'25" W	210.58'
C19	635.00'	7°04'56"	78.49'	N 38°25'30" E	78.44'
C23	32.00'	55°46'22"	31.15'	S 69°51'08" W	29.93'
C24	79.00'	11°17'18"10"	161.74'	N 39°05'14" E	134.93'
C25	32.00'	54°76'52"	30.41'	S 07°39'36" W	29.28'
C26	440.00'	24°18'46"	186.71'	S 47°02'25" W	185.31'

CURVE TABLE FOR LOTS AND TRACTS DATA

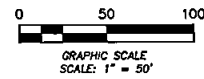
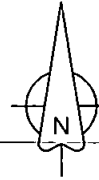
CURVE	RADIUS	DELTA ANGLE	ARC LENGTH	CHORD BEARING	CHORD LENGTH
C35	137.24'	46°30'48"	112.21'	N 68°45'25" E	109.11'
C63	500.00'	5°22'57"	46.97'	S 37°34'31" W	46.96'
C64	635.00'	5°22'57"	59.65'	S 37°34'31" W	59.63'
C71	32.00'	42°52'40"	23.95'	S 63°24'18" W	23.39'
C72	137.24'	107°12'50"	24.66'	N 87°01'54" E	24.63'
C73	32.00'	12°53'41"	7.20'	S 69°42'52" W	7.19'
C74	79.00'	63°02'56"	86.92'	N 68°13'01" E	82.61'
C75	137.24'	36°32'58"	87.54'	N 63°36'30" E	86.07'
C76	79.00'	26°39'25"	36.75'	N 21°22'01" E	36.42'
C77	79.00'	27°36'09"	38.06'	N 65°45'46" W	37.69'
C78	440.00'	0°32'58"	4.22'	S 35°09'31" W	4.22'
C79	108.00'	24°30'09"	46.19'	S 20°07'54" E	45.83'
C80	108.00'	21°31'11"	39.75'	S 69°35'46" W	39.52'
C81	50.03'	14°18'51"	12.50'	S 17°21'12" W	12.47'
C82	440.00'	12°32'37"	98.89'	S 41°52'18" W	98.68'
C83	50.00'	13°03'13"	11.39'	S 31°02'14" W	11.37'
C84	305.00'	10°44'47"	57.21'	S 42°56'13" W	57.12'
C104	50.00'	27°22'03"	23.88'	S 23°52'48" W	23.66'
C105	108.00'	24°31'20"	85.93'	S 69°35'46" W	83.58'
C106	58.00'	74°21'01"	75.26'	S 69°13'29" E	70.09'
C111	635.00'	31°3'08"	35.67'	N 35°29'36" E	35.67'
C112	635.00'	3°51'48"	42.82'	N 40°02'03" E	42.81'

NOTICE: UPLAND BUFFERS WILL REMAIN NATURALLY VEGETATED AND UNDISTURBED

Prepared by:  
**A & J Land Surveyors, Inc.**  
 5847 Luella Street  
 Jacksonville, Florida 32207  
 T (904) 346.1733  
 F (904) 346.1736

# Arbors at Rivertown - Phase Three

A PARCEL OF LAND, BEING A PORTION OF THE UNPLATTED LANDS OF THE "FRANCIS P. FATIO GRANT", IN SECTION 39, TOWNSHIP 5 SOUTH, RANGE 27 EAST, A PORTION OF THE UNPLATTED LANDS OF THE "FRANCIS P. FATIO GRANT", IN SECTION 44, TOWNSHIP 5 SOUTH, RANGE 26 EAST, AND A PORTION OF TRACT "SWMF-2" (STORM WATER MANAGEMENT FACILITY), AS SHOWN ON THE PLAT OF "ESTATES AT RIVERTOWN, AS RECORDED IN THE PLAT THEREOF, RECORDED IN MAP BOOK 105, PAGES 50 THROUGH 58 OF THE PUBLIC RECORDS OF ST. JOHNS COUNTY, FLORIDA, SAID LANDS ALL LYING WITHIN ST. JOHNS COUNTY, FLORIDA.



SEE SHEET TWO (2) FOR LEGEND,  
GENERAL NOTES, ABBREVIATIONS and  
PLAT TITLE LETTER COMMENTS  
SEE SHEET THREE (3) FOR KEY MAP

CURVE TABLE FOR PLAT BOUNDARY DATA

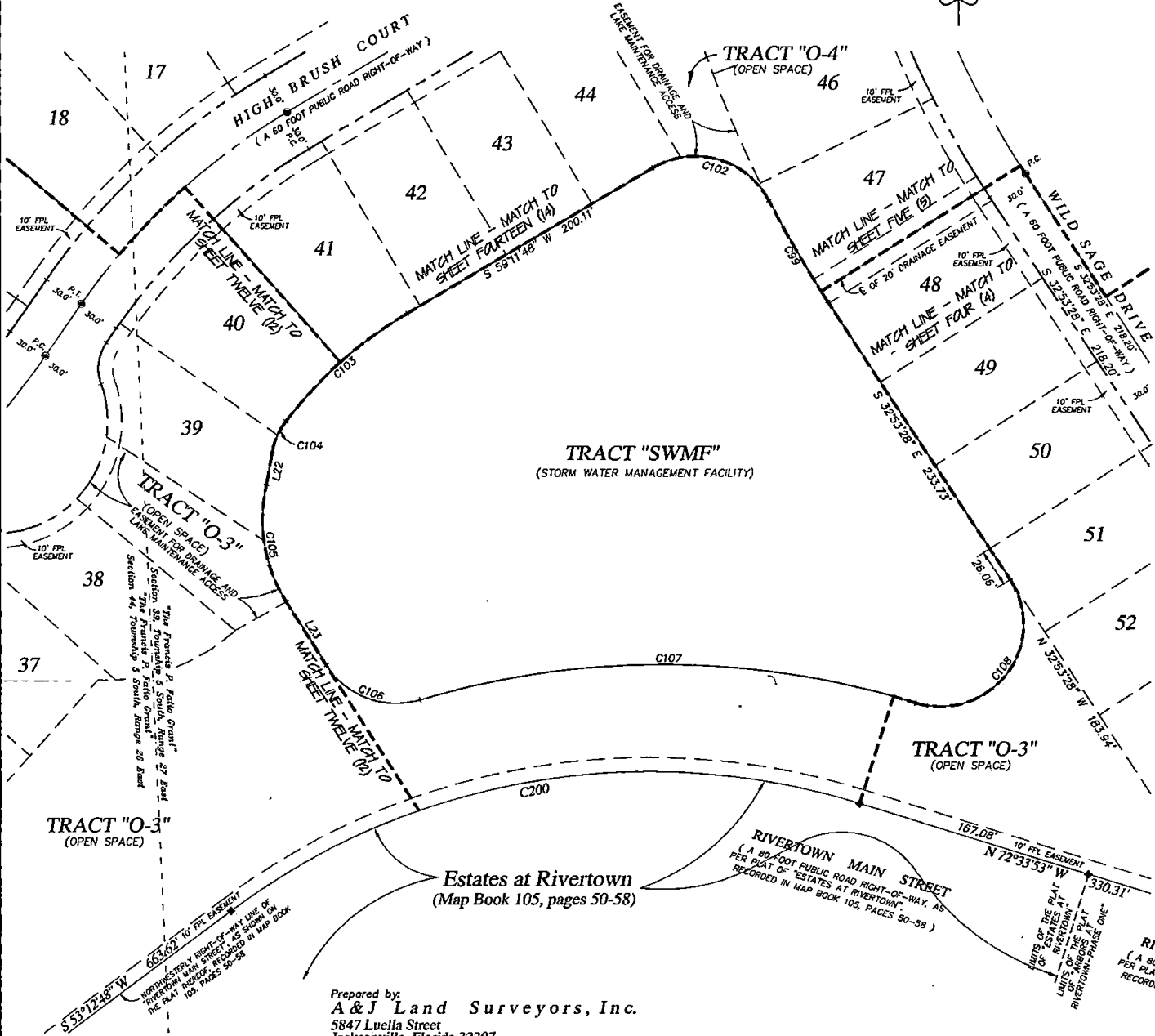
CURVE	RADIUS	DELTA ANGLE	ARC LENGTH	CHORD BEARING	CHORD LENGTH
C200	490.00'	S 41°13'19" W	463.71'	S 80°19'27" W	446.60'

CURVE TABLE FOR TRACT DATA

CURVE	RADIUS	DELTA ANGLE	ARC LENGTH	CHORD BEARING	CHORD LENGTH
C99	817.50'	S 43°00" E	82.04'	S 30°05'58" E	82.01'
C102	58.00'	S 139°43" E	94.81'	N 73°59'20" W	84.60'
C103	305.00'	S 21°37'58" E	115.16'	S 48°22'49" W	114.47'
C104	50.00'	S 27°22'03" E	23.88'	S 23°52'48" W	23.66'
C105	108.00'	S 45°35'20" E	85.93'	S 09°35'18" E	83.68'
C106	58.00'	S 74°21'01" E	75.26'	S 69°33'29" E	70.09'
C107	587.22'	S 47°17'12" E	351.40'	N 63°35'24" W	346.18'
C108	58.00'	S 140°29'40" E	142.17'	N 37°19'52" E	109.16'

LINE TABLE FOR TRACT DATA

LINE	BEARING	DISTANCE
L22	S 10°11'47" W	23.34'
L23	N 32°22'58" W	53.11'



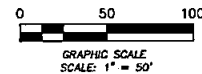
Prepared by:  
**A & J Land Surveyors, Inc.**  
5847 Luella Street  
Jacksonville, Florida 32207  
T (904) 346.1733  
F (904) 346.1736

**NOTICE: UPLAND BUFFERS WILL REMAIN NATURALLY VEGETATED AND UNDISTURBED**

**RIVERTOWN MAIN STREET**  
(A 60 FOOT PUBLIC ROAD RIGHT-OF-WAY, AS PER PLAT OF "ARBORS AT RIVERTOWN-PHASE ONE", RECORDED IN MAP BOOK 101, PAGES 52 - 58 )

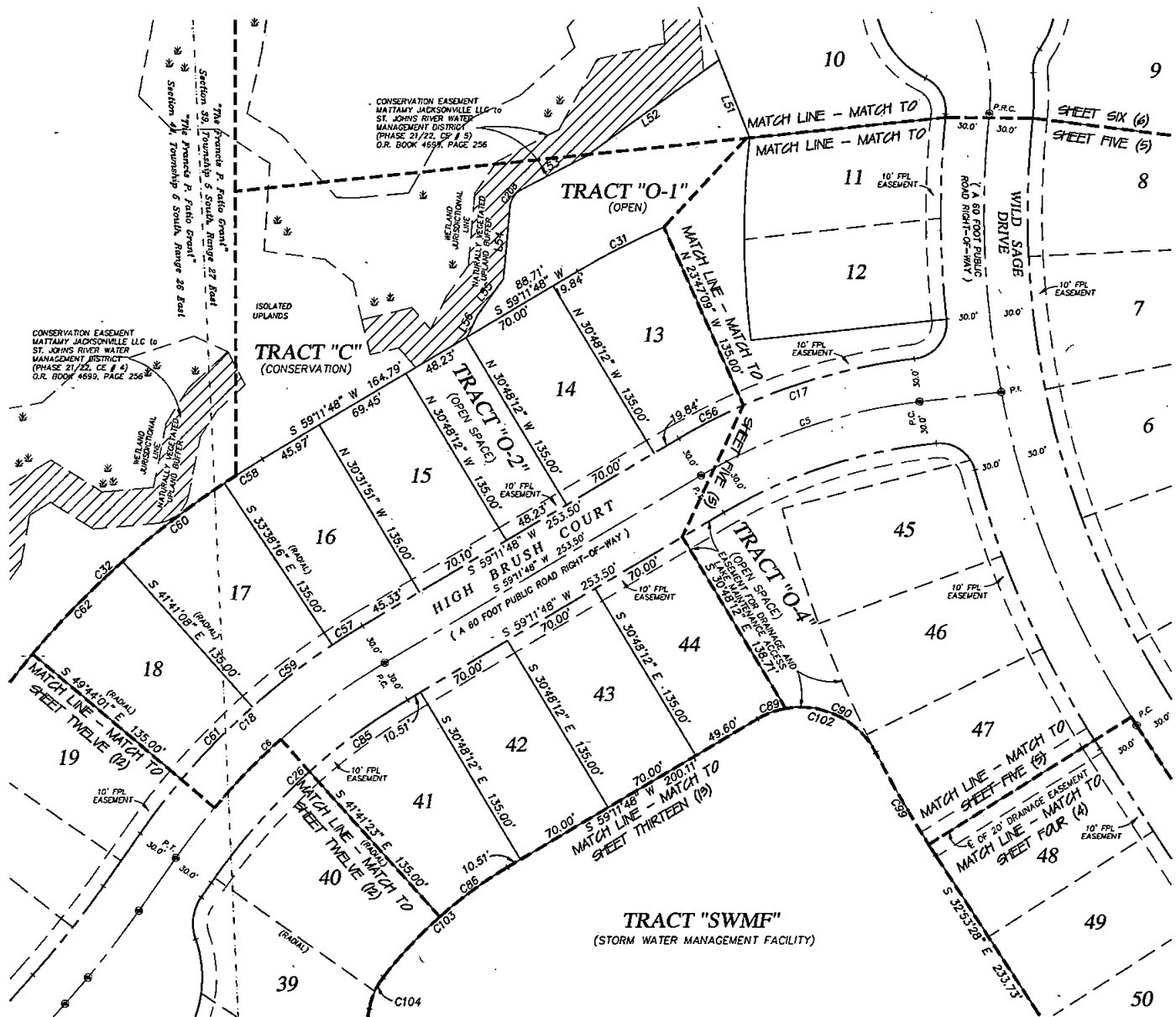
# Arbors at Rivertown - Phase Three

A PARCEL OF LAND, BEING A PORTION OF THE UNPLATTED LANDS OF THE "FRANCIS P. FATIO GRANT", IN SECTION 39, TOWNSHIP 5 SOUTH, RANGE 27 EAST, A PORTION OF THE UNPLATTED LANDS OF THE "FRANCIS P. FATIO GRANT", IN SECTION 44, TOWNSHIP 5 SOUTH, RANGE 26 EAST, AND A REPLAT OF A PORTION OF TRACT "SWMF-2" (STORM WATER MANAGEMENT FACILITY), AS SHOWN ON THE PLAT OF "ESTATE AT RIVERTOWN, AS RECORDED IN THE PLAT THEREOF, RECORDED IN MAP BOOK 105, PAGES 60 THROUGH 58 OF THE PUBLIC RECORDS OF ST. JOHNS COUNTY, FLORIDA, SAID LANDS ALL LYING WITHIN ST. JOHNS COUNTY, FLORIDA.



MAP BOOK \_\_\_\_\_ PAGE \_\_\_\_\_  
 SHEET FOURTEEN (14) of FOURTEEN (14) SHEETS

SEE SHEET TWO (2) FOR LEGEND,  
 GENERAL NOTES, ABBREVIATIONS and  
 PLAT-TITLE LETTER COMMENTS  
 SEE SHEET THREE (3) FOR KEY MAP



CURVE TABLE FOR CENTERLINE DATA

CURVE	RADIUS	DELTA ANGLE	ARC LENGTH	CHORD BEARING	CHORD LENGTH
C5	380.00	24°06'41"	159.91'	S 71°15'08" W	158.73'
C6	470.00	24°18'46"	199.44'	S 47°02'25" W	197.93'

CURVE TABLE FOR RIGHT-OF-WAY DATA

CURVE	RADIUS	DELTA ANGLE	ARC LENGTH	CHORD BEARING	CHORD LENGTH
C18	500.00'	24°18'46"	212.17'	S 47°02'25" W	210.58'
C26	440.00'	24°18'46"	186.71'	S 47°02'25" W	185.31'

CURVE TABLE FOR LOTS AND TRACTS DATA

CURVE	RADIUS	DELTA ANGLE	ARC LENGTH	CHORD BEARING	CHORD LENGTH
C31	545.00'	7°01'04"	66.75'	S 62°42'20" W	66.71'
C32	635.00'	24°18'46"	269.45'	S 47°02'25" W	267.44'
C56	410.00'	7°01'04"	50.22'	S 62°42'20" W	50.19'
C57	500.00'	2°30'04"	24.74'	S 57°46'46" W	24.73'
C58	635.00'	2°30'04"	31.41'	S 57°46'46" W	31.41'
C59	500.00'	8°02'52"	70.23'	S 52°20'18" W	70.17'
C60	635.00'	8°02'52"	89.19'	S 52°20'18" W	89.12'
C61	500.00'	8°02'52"	70.23'	S 44°17'25" W	70.17'
C62	635.00'	8°02'52"	89.19'	S 44°17'25" W	89.12'
C65	440.00'	10°33'11"	83.60'	S 53°45'12" W	83.48'
C66	305.00'	10°33'11"	67.58'	S 53°45'12" W	67.66'
C68	58.00'	20°35'41"	20.65'	S 69°29'36" W	20.74'
C90	58.00'	73°04'04"	73.97'	N 63°40'29" W	69.05'
C99	617.50'	5°45'00"	82.04'	S 30°00'58" E	82.01'
C102	58.00'	93°39'45"	94.61'	N 73°58'20" W	84.60'
C103	305.00'	21°37'58"	115.16'	S 48°22'49" W	114.47'
C104	50.00'	27°22'03"	23.88'	S 23°52'48" W	23.66'
C208	15.00'	57°20'36"	15.01'	S 33°55'22" W	14.39'

LINE TABLE FOR LOTS AND TRACTS DATA

LINE	BEARING	DISTANCE
LS1	N 21°14'17" W	57.89'
LS2	N 53°36'27" E	113.67'
LS3	N 62°35'40" E	49.56'
LS4	N 05°15'04" E	49.61'
LS5	N 36°11'55" E	30.71'
LS6	N 25°34'00" E	17.20'

NOTICE: UPLAND BUFFERS WILL REMAIN NATURALLY VEGETATED AND UNDISTURBED

Prepared by:  
**A & J Land Surveyors, Inc.**  
 5847 Luella Street  
 Jacksonville, Florida 32207  
 T (904) 346.1733  
 F (904) 346.1736