

RESOLUTION NO. 2025-117
RESOLUTION OF THE BOARD OF COUNTY COMMISSIONERS
OF ST. JOHNS COUNTY, FLORIDA APPROVING A PLAT FOR
SILVERLEAF PARCEL 14A.

WHEREAS, CND-SILVERLEAF, LLC, A FLORIDA LIABILITY COMPANY, AS OWNER, has applied to the Board of County Commissioners of St. Johns County, Florida for approval to record a plat known as Silverleaf Parcel 14A.

NOW, THEREFORE BE IT RESOLVED BY THE BOARD OF COUNTY COMMISSIONERS OF ST. JOHNS COUNTY, FLORIDA, as follows:

Section 1. The above-described subdivision plat and its dedicated areas depicted thereon are conditionally approved and accepted by the Board of County Commissioners of St. Johns County, Florida subject to Sections 2, 3, 4, 5 and 6.

Section 2. A Required Improvements Bond in the amount of \$3,904,499.98 was previously filed with the Clerk's office.

Section 3. A Required Improvements Bond for maintenance in the amount of \$759,974.07 will be required.

Section 4. The approval and acceptance described in Section 1 shall not take effect until the Clerk has received a title opinion, certificate, or policy pertaining to the real property that is the subject of the aforementioned subdivision plat which opinion, certificate or policy is in a form acceptable to the County Attorney or Assistant County Attorney.

Section 5. The Clerk is instructed to file and record the consent and joinder (s) to the plat executed by all mortgagees identified in the title opinion or certificate of the title in Section 4.

Section 6. The approval and acceptance described in Section 1 shall not take effect until the plat has been signed by each of the following departments, person or offices:

- a) Chairman or Vice-Chairman of the Board of County Commissioners of St. Johns County, Florida;
- b) Office of the County Attorney;
- c) County Growth Management Department;
- d) Office of the County Surveyor; and
- e) Clerk of Courts.

The Clerk shall not sign or accept the Plat for recording until it has been signed by each of the above persons or entities described in a) through d) above. If the plat is not signed and accepted by the Clerk for recording within 14 days from the date hereof, then the above-described conditional approval shall

automatically terminate. If the plat is signed by the Clerk on or before such time, the conditions described herein shall be deemed to have been met.

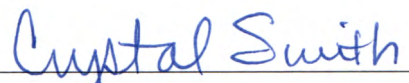
ADOPTED by the Board of County Commissioners of St. Johns County, Florida, this 15th day of April, 2025.

**BOARD OF COUNTY COMMISSIONERS
OF ST. JOHNS COUNTY, FLORIDA**

Rendition Date APR 15 2025

BY: 
Krista Joseph, Chair

ATTEST: Brandon J. Patty, Clerk of the Circuit Court & Comptroller


Deputy Clerk



SILVERLEAF PARCEL 14A

A PORTION OF SECTION 36, TOWNSHIP 5 SOUTH, RANGE 27 EAST, A PORTION OF SECTION 1, TOWNSHIP 5 SOUTH, RANGE 27 EAST, A PORTION OF SECTION 31, TOWNSHIP 5 SOUTH, RANGE 28 EAST, TOGETHER WITH A PORTION OF SECTION 6, TOWNSHIP 6 SOUTH, RANGE 26 EAST, ST. JOHNS COUNTY, FLORIDA.

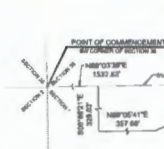
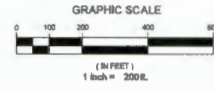
MAP BOOK _____ PAGE _____

SHEET 2 OF 9 SHEETS

NOTES

- 1) NOTICE: THIS PLAN, AS RECORDED IN ITS GRAPHIC FORM, IS THE OFFICIAL REPRODUCTION OF THE SUBMITTED LAND DESCRIPTION HEREIN AND WILL, IN NO CIRCUMSTANCES, BE SUPPLANTED IN AUTHORITY BY ANY OTHER GRAPHIC OR DIGITAL FORM OF THIS PLAN. THERE MAY BE ADDITIONAL RESTRICTIONS THAT ARE NOT RECORDED ON THIS PLAN THAT MAY BE FOUND IN THE PUBLIC RECORDS OF ST. JOHNS COUNTY, FLORIDA.
- 2) ALL BARRIERS SHOWN HEREON ARE BASED ON THE NORTHERLY BOUNDARY OF WAY LINES OF SILVERLEAF DRIVE AS SHOWN THEREON.
- 3) THE EXTENDED USE OF THESE COORDINATES IS FOR PLATTING PURPOSES. STATE PLANE COORDINATE SYSTEM HEREON ARE BASED ON NORTH AMERICAN DATUM OF 1983 (NAD 83), TOWNSHIP 5 SOUTH, RANGE 27 EAST ZONE 9801.
- 4) ALL UPLAND BUFFER AREAS ARE TO REMAIN NATURAL AND UNDISTURBED.
- 5) ALL PLATTED UTILITY EASEMENTS SHALL PROVIDE THAT SUCH EASEMENTS SHALL ALSO BE EASEMENTS FOR THE CONSTRUCTION, INSTALLATION, MAINTENANCE, AND OPERATION OF CABLE TELEVISION SERVICES. PROVIDED, HOWEVER, NO SUCH CONSTRUCTION, INSTALLATION, MAINTENANCE, AND OPERATION OF CABLE TELEVISION SERVICES SHALL INTERFERE WITH THE FACILITIES AND SERVICES OF AN ELECTRIC, TELEPHONE, GAS, OR OTHER PUBLIC UTILITY. IN THE EVENT A CABLE TELEVISION COMPANY DAMAGES THE FACILITIES OF A PUBLIC UTILITY, IT SHALL BE SOLELY RESPONSIBLE FOR THE DAMAGES. THIS SECTION SHALL NOT APPLY TO THOSE PRIVATE EASEMENTS GRANTED TO OR OBTAINED BY A PARTICULAR ELECTRIC, TELEPHONE, GAS, OR OTHER PUBLIC UTILITY. SUCH CONSTRUCTION, INSTALLATION, MAINTENANCE, AND OPERATION SHALL COMPLY WITH THE NATIONAL ELECTRICAL SAFETY CODE AS ADOPTED BY THE FLORIDA PUBLIC SERVICE COMMISSION.
- 6) WETLAND LINES SHOWN HEREON PER ST. JOHNS COUNTY WATER MANAGEMENT DISTRICT PERMIT NO. W144-04, DATED FEBRUARY 26, 2003.

- 7) LANDS SHOWN HEREON ARE SUBJECT TO A DEED OF CONSERVATION EASEMENT PER OFFICIAL RECORDS BOOK 4303, PAGE 176 OF THE PUBLIC RECORDS OF ST. JOHNS COUNTY, FLORIDA.
- 8) LANDS SHOWN HEREON ARE SUBJECT TO A DEED OF CONSERVATION EASEMENT PER OFFICIAL RECORDS BOOK 494, PAGE 486 OF THE PUBLIC RECORDS OF ST. JOHNS COUNTY, FLORIDA.
- 9) LANDS SHOWN HEREON ARE SUBJECT TO A DEED OF CONSERVATION EASEMENT PER OFFICIAL RECORDS BOOK 431, PAGE 154 OF THE PUBLIC RECORDS OF ST. JOHNS COUNTY, FLORIDA.
- 10) LANDS SHOWN HEREON ARE SUBJECT TO AN UNDERGROUND EASEMENT (BUSINESS) TO FLORIDA POWER & LIGHT COMPANY, PER OFFICIAL RECORDS BOOK 379, PAGE 213 OF THE PUBLIC RECORDS OF ST. JOHNS COUNTY, FLORIDA.
- 11) LANDS SHOWN HEREON ARE SUBJECT TO A EASEMENT TO BELL SOUTH COMMUNICATIONS, LLC, A GEORGIA LIMITED LIABILITY COMPANY D/B/A AT&T FLORIDA, PER OFFICIAL RECORDS BOOK 366, PAGE 817 OF THE PUBLIC RECORDS OF ST. JOHNS COUNTY, FLORIDA.
- 12) LANDS SHOWN HEREON ARE SUBJECT TO A EASEMENT FOR UTILITIES IN FAVOR OF ST. JOHNS COUNTY, A POLITICAL SUBDIVISION OF THE STATE OF FLORIDA, PER OFFICIAL RECORDS BOOK 386, PAGE 186 OF THE PUBLIC RECORDS OF ST. JOHNS COUNTY, FLORIDA.



- LEGEND**
- DENOTES FOUND 4"x4" CONCRETE PERMANENT REFERENCE MONUMENT STAMPED L.S. 3024
 - DENOTES FOUND 4"x4" CONCRETE PERMANENT REFERENCE MONUMENT NO. 12
 - DENOTES SET 4"x4" CONCRETE PERMANENT REFERENCE MONUMENT STAMPED L.S. 6715
 - DENOTES SET PERMANENT CONTROL POINT STAMPED L.S. 6715
 - P.C. DENOTES TABULATED CURVE DATA
 - L.I. DENOTES POINT OF CURVATURE
 - P.T. DENOTES POINT OF TANGENCY
 - P.C.C. DENOTES POINT OF INTERSECTING CURVE
 - P.C.C. DENOTES POINT OF COMPOUND CURVE
 - P.M. DENOTES PERMANENT REFERENCE MONUMENT
 - (R) DENOTES RADIAL LINE
 - (N) NORTH
 - (E) EAST
 - SEC. SECTION
 - T. TOWNSHIP
 - R. RANGE
 - R/W RIGHT-OF-WAY
 - CL CENTERLINE
 - CR CHORD BEARING
 - Δ DELTA
 - R.P. RADIAL POINT
 - (SD.1) DENOTES DISTANCE TO EASEMENT
 - F.P.L. FLORIDA POWER AND LIGHT
 - ESMT. EASEMENT
 - L.S. LEFT STATION
 - CRS. OFFICIAL RECORDS BOOK
 - L.T. LEASE EASEMENT
 - S.C. ST. JOHNS COUNTY UTILITY DEPARTMENT UTILITY EASEMENT
 - U.P.D. UNDESTRUCTURED PRIVATE DRAINAGE EASEMENT
 - W. WETLANDS
 - U. UPLAND BUFFER

CURVE #	LENGTH	RADIUS	DELTA	CHORD BEARING	CHORD
C1	88.66	3454.00	2°01'30"	N82°47'46"E	88.66
C2	1278.19	2180.00	34°22'58"	N88°52'38"E	1288.19
C3	547.19	8073.00	6°10'38"	N87°23'21"W	548.84
C4	532.19	4638.00	7°34'07"	N87°23'21"W	531.77
C5	416.57	1288.00	18°19'18"	N87°23'21"W	416.74

POINT	NORTHING	EASTING	DESCRIPTION
1	208893.7431	482431.8844	POINT OF BEGINNING
2	2087444.9391	488647.0982	NORTHEAST CORNER OF TRACT "F"



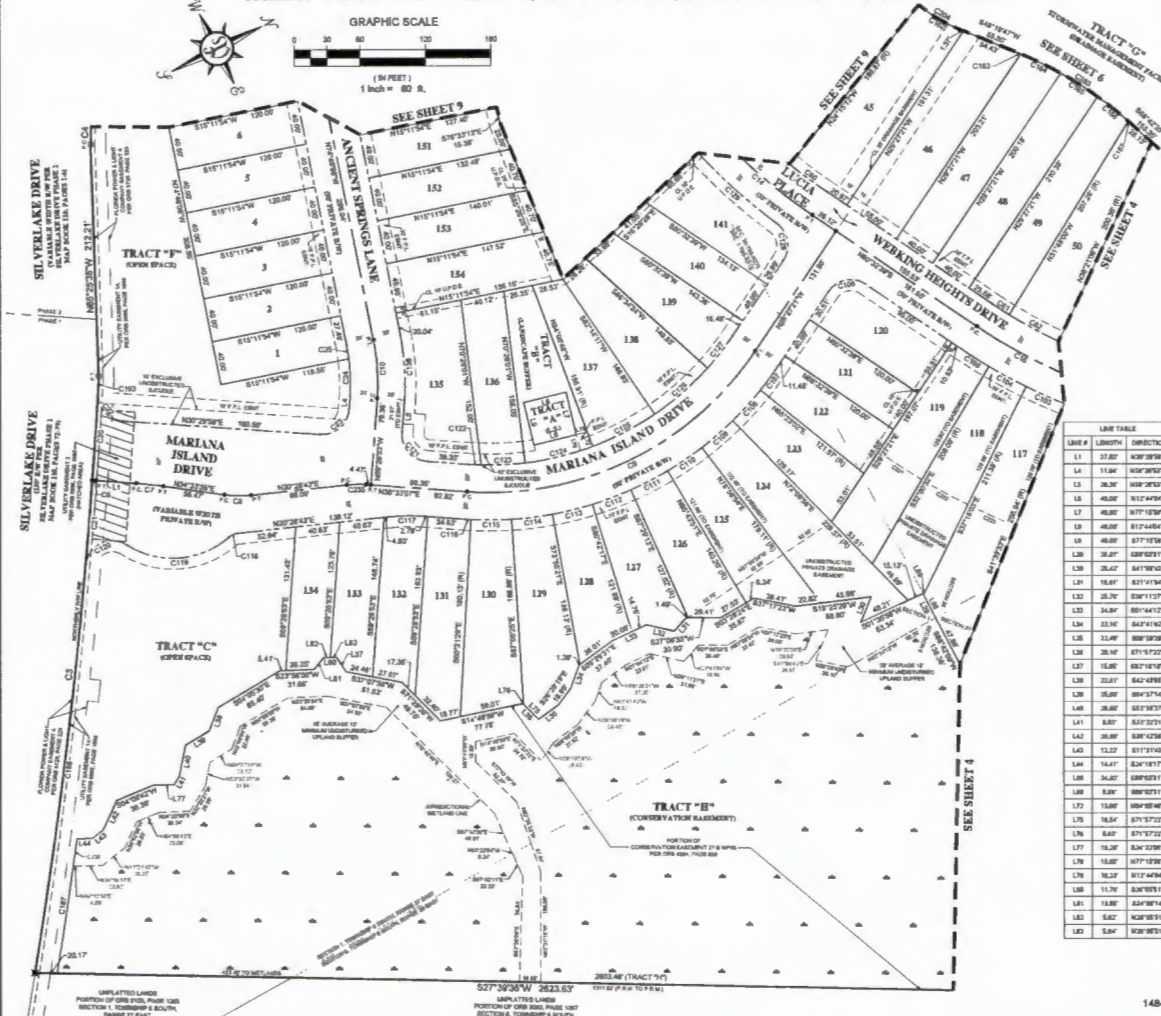
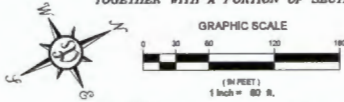
PREPARED BY:
PERRET AND ASSOCIATES, INC.
 1484 MONTICELLO ROAD, JACKSONVILLE, FLORIDA 32207
 PHONE (904) 805-0030 - L.B. NO. 6715

SILVERLEAF PARCEL 14A

A PORTION OF SECTION 36, TOWNSHIP 5 SOUTH, RANGE 27 EAST, A PORTION OF SECTION 1, TOWNSHIP 6 SOUTH, RANGE 27 EAST, A PORTION OF SECTION 31, TOWNSHIP 5 SOUTH, RANGE 28 EAST, TOGETHER WITH A PORTION OF SECTION 6, TOWNSHIP 6 SOUTH, RANGE 28 EAST, ST. JOHNS COUNTY, FLORIDA.

MAP BOOK _____ PAGE _____

SHEET 3 OF 9 SHEETS
(SEE SHEET 2 FOR GENERAL NOTES AND LEGEND)



LINE TABLE

LINE #	LENGTH	DIRECTION
L1	37.80	S89°28'30"E
L2	11.56	N02°30'30"W
L3	36.30	N02°30'30"W
L4	48.00	N17°18'30"E
L5	48.00	S17°18'30"W
L6	48.00	S17°18'30"W
L7	48.00	S17°18'30"W
L8	48.00	S17°18'30"W
L9	48.00	S17°18'30"W
L10	48.00	S17°18'30"W
L11	38.00	S89°28'30"E
L12	11.56	N02°30'30"W
L13	36.30	N02°30'30"W
L14	48.00	N17°18'30"E
L15	48.00	S17°18'30"W
L16	48.00	S17°18'30"W
L17	48.00	S17°18'30"W
L18	48.00	S17°18'30"W
L19	48.00	S17°18'30"W
L20	48.00	S17°18'30"W
L21	38.00	S89°28'30"E
L22	11.56	N02°30'30"W
L23	36.30	N02°30'30"W
L24	48.00	N17°18'30"E
L25	48.00	S17°18'30"W
L26	48.00	S17°18'30"W
L27	48.00	S17°18'30"W
L28	48.00	S17°18'30"W
L29	48.00	S17°18'30"W
L30	48.00	S17°18'30"W
L31	38.00	S89°28'30"E
L32	11.56	N02°30'30"W
L33	36.30	N02°30'30"W
L34	48.00	N17°18'30"E
L35	48.00	S17°18'30"W
L36	48.00	S17°18'30"W
L37	48.00	S17°18'30"W
L38	48.00	S17°18'30"W
L39	48.00	S17°18'30"W
L40	48.00	S17°18'30"W
L41	38.00	S89°28'30"E
L42	11.56	N02°30'30"W
L43	36.30	N02°30'30"W
L44	48.00	N17°18'30"E
L45	48.00	S17°18'30"W
L46	48.00	S17°18'30"W
L47	48.00	S17°18'30"W
L48	48.00	S17°18'30"W
L49	48.00	S17°18'30"W
L50	48.00	S17°18'30"W
L51	38.00	S89°28'30"E
L52	11.56	N02°30'30"W
L53	36.30	N02°30'30"W
L54	48.00	N17°18'30"E
L55	48.00	S17°18'30"W
L56	48.00	S17°18'30"W
L57	48.00	S17°18'30"W
L58	48.00	S17°18'30"W
L59	48.00	S17°18'30"W
L60	48.00	S17°18'30"W
L61	38.00	S89°28'30"E
L62	11.56	N02°30'30"W
L63	36.30	N02°30'30"W
L64	48.00	N17°18'30"E
L65	48.00	S17°18'30"W
L66	48.00	S17°18'30"W
L67	48.00	S17°18'30"W
L68	48.00	S17°18'30"W
L69	48.00	S17°18'30"W
L70	48.00	S17°18'30"W
L71	38.00	S89°28'30"E
L72	11.56	N02°30'30"W
L73	36.30	N02°30'30"W
L74	48.00	N17°18'30"E
L75	48.00	S17°18'30"W
L76	48.00	S17°18'30"W
L77	48.00	S17°18'30"W
L78	48.00	S17°18'30"W
L79	48.00	S17°18'30"W
L80	48.00	S17°18'30"W
L81	38.00	S89°28'30"E
L82	11.56	N02°30'30"W
L83	36.30	N02°30'30"W
L84	48.00	N17°18'30"E
L85	48.00	S17°18'30"W
L86	48.00	S17°18'30"W
L87	48.00	S17°18'30"W
L88	48.00	S17°18'30"W
L89	48.00	S17°18'30"W
L90	48.00	S17°18'30"W
L91	38.00	S89°28'30"E
L92	11.56	N02°30'30"W
L93	36.30	N02°30'30"W
L94	48.00	N17°18'30"E
L95	48.00	S17°18'30"W
L96	48.00	S17°18'30"W
L97	48.00	S17°18'30"W
L98	48.00	S17°18'30"W
L99	48.00	S17°18'30"W
L100	48.00	S17°18'30"W

CURVE TABLE

CURVE #	LENGTH	RADIUS	DELTA	CHORD BEARING	CHORD
C1	547.10	805.00	8°59'30"	N02°30'30"W	547.10
C2	521.10	765.00	7°54'30"	N02°30'30"W	521.10
C3	271.10	405.00	4°03'30"	N02°30'30"W	271.10
C4	374.30	555.00	4°59'30"	N02°30'30"W	374.30
C5	365.00	540.00	4°45'30"	N02°30'30"W	365.00
C6	668.00	1000.00	4°03'30"	N02°30'30"W	668.00
C7	53.00	80.00	12°11'30"	N02°30'30"W	53.00
C8	374.30	555.00	4°59'30"	N02°30'30"W	374.30
C9	365.00	540.00	4°45'30"	N02°30'30"W	365.00
C10	547.10	805.00	8°59'30"	N02°30'30"W	547.10
C11	521.10	765.00	7°54'30"	N02°30'30"W	521.10
C12	271.10	405.00	4°03'30"	N02°30'30"W	271.10
C13	374.30	555.00	4°59'30"	N02°30'30"W	374.30
C14	365.00	540.00	4°45'30"	N02°30'30"W	365.00
C15	668.00	1000.00	4°03'30"	N02°30'30"W	668.00
C16	53.00	80.00	12°11'30"	N02°30'30"W	53.00
C17	374.30	555.00	4°59'30"	N02°30'30"W	374.30
C18	365.00	540.00	4°45'30"	N02°30'30"W	365.00
C19	547.10	805.00	8°59'30"	N02°30'30"W	547.10
C20	521.10	765.00	7°54'30"	N02°30'30"W	521.10
C21	271.10	405.00	4°03'30"	N02°30'30"W	271.10
C22	374.30	555.00	4°59'30"	N02°30'30"W	374.30
C23	365.00	540.00	4°45'30"	N02°30'30"W	365.00
C24	668.00	1000.00	4°03'30"	N02°30'30"W	668.00
C25	53.00	80.00	12°11'30"	N02°30'30"W	53.00
C26	374.30	555.00	4°59'30"	N02°30'30"W	374.30
C27	365.00	540.00	4°45'30"	N02°30'30"W	365.00
C28	547.10	805.00	8°59'30"	N02°30'30"W	547.10
C29	521.10	765.00	7°54'30"	N02°30'30"W	521.10
C30	271.10	405.00	4°03'30"	N02°30'30"W	271.10
C31	374.30	555.00	4°59'30"	N02°30'30"W	374.30
C32	365.00	540.00	4°45'30"	N02°30'30"W	365.00
C33	668.00	1000.00	4°03'30"	N02°30'30"W	668.00
C34	53.00	80.00	12°11'30"	N02°30'30"W	53.00
C35	374.30	555.00	4°59'30"	N02°30'30"W	374.30
C36	365.00	540.00	4°45'30"	N02°30'30"W	365.00
C37	547.10	805.00	8°59'30"	N02°30'30"W	547.10
C38	521.10	765.00	7°54'30"	N02°30'30"W	521.10
C39	271.10	405.00	4°03'30"	N02°30'30"W	271.10
C40	374.30	555.00	4°59'30"	N02°30'30"W	374.30
C41	365.00	540.00	4°45'30"	N02°30'30"W	365.00
C42	668.00	1000.00	4°03'30"	N02°30'30"W	668.00
C43	53.00	80.00	12°11'30"	N02°30'30"W	53.00
C44	374.30	555.00	4°59'30"	N02°30'30"W	374.30
C45	365.00	540.00	4°45'30"	N02°30'30"W	365.00
C46	547.10	805.00	8°59'30"	N02°30'30"W	547.10
C47	521.10	765.00	7°54'30"	N02°30'30"W	521.10
C48	271.10	405.00	4°03'30"	N02°30'30"W	271.10
C49	374.30	555.00	4°59'30"	N02°30'30"W	374.30
C50	365.00	540.00	4°45'30"	N02°30'30"W	365.00
C51	668.00	1000.00	4°03'30"	N02°30'30"W	668.00
C52	53.00	80.00	12°11'30"	N02°30'30"W	53.00
C53	374.30	555.00	4°59'30"	N02°30'30"W	374.30
C54	365.00	540.00	4°45'30"	N02°30'30"W	365.00
C55	547.10	805.00	8°59'30"	N02°30'30"W	547.10
C56	521.10	765.00	7°54'30"	N02°30'30"W	521.10
C57	271.10	405.00	4°03'30"	N02°30'30"W	271.10
C58	374.30	555.00	4°59'30"	N02°30'30"W	374.30
C59	365.00	540.00	4°45'30"	N02°30'30"W	365.00
C60	668.00	1000.00	4°03'30"	N02°30'30"W	668.00
C61	53.00	80.00	12°11'30"	N02°30'30"W	53.00
C62	374.30	555.00	4°59'30"	N02°30'30"W	374.30
C63	365.00	540.00	4°45'30"	N02°30'30"W	365.00
C64	547.10	805.00	8°59'30"	N02°30'30"W	547.10
C65	521.10	765.00	7°54'30"	N02°30'30"W	521.10
C66	271.10	405.00	4°03'30"	N02°30'30"W	271.10
C67	374.30	555.00	4°59'30"	N02°30'30"W	374.30
C68	365.00	540.00	4°45'30"	N02°30'30"W	365.00
C69	668.00	1000.00	4°03'30"	N02°30'30"W	668.00
C70	53.00	80.00	12°11'30"	N02°30'30"W	53.00
C71	374.30	555.00	4°59'30"	N02°30'30"W	374.30
C72	365.00	540.00	4°45'30"	N02°30'30"W	365.00
C73	547.10	805.00	8°59'30"	N02°30'30"W	547.10
C74	521.10	765.00	7°54'30"	N02°30'30"W	521.10
C75	271.10	405.00	4°03'30"	N02°30'30"W	271.10
C76	374.30	555.00	4°59'30"	N02°30'30"W	374.30
C77	365.00	540.00	4°45'30"	N02°30'30"W	365.00
C78	668.00	1000.00	4°03'30"	N02°30'30"W	668.00
C79	53.00	80.00	12°11'30"	N02°30'30"W	53.00
C80	374.30	555.00	4°59'30"	N02°30'30"W	374.30
C81	365.00	540.00	4°45'30"	N02°30'30"W	365.00
C82	547.10	805.00	8°59'30"	N02°30'30"W	547.10
C83	521.10	765.00	7°54'30"	N02°30'30"W	521.10
C84	271.10	405.00	4°03'30"	N02°30'30"W	271.10
C85	374.30	555.00	4°59'30"	N02°30'30"W	374.30
C86	365.00	540.00	4°45'30"	N02°30'30"W	365.00
C87	668.00	1000.00	4°03'30"	N02°30'30"W	668.00
C88	53.00	80.00	12°11'30"	N02°30'30"W	53.00
C89	374.30	555.00	4°59'30"	N02°30'30"W	374.30
C90	365.00	540.00	4°45'30"	N02°30'30"W	365.00
C91	547.10	805.00	8°59'30"	N02°30'30"W	547.10
C92	521.10	765.00	7°54'30"	N02°30'30"W	521.10
C93	271.10	405.00	4°03'30"	N02°30'30"W	271.10
C94	374.30	555.00	4°59'30"	N02°30'30"W	374.30
C95	365.00	540.00	4°45'30"	N02°30'30"W	365.00
C96	668.00	1000.00	4°03'30"	N02°30'30"W	668.00
C97	53.00	80.00	12°11'30"	N02°30'30"W	53.00
C98	374.30	555.00	4°59'30"	N02°30'30"W	374.30
C99	365.00	540.00	4°45'30"	N02°30'30"W	365.00
C100	547.10	805.00	8°59'30"	N02°30'30"W	547.10

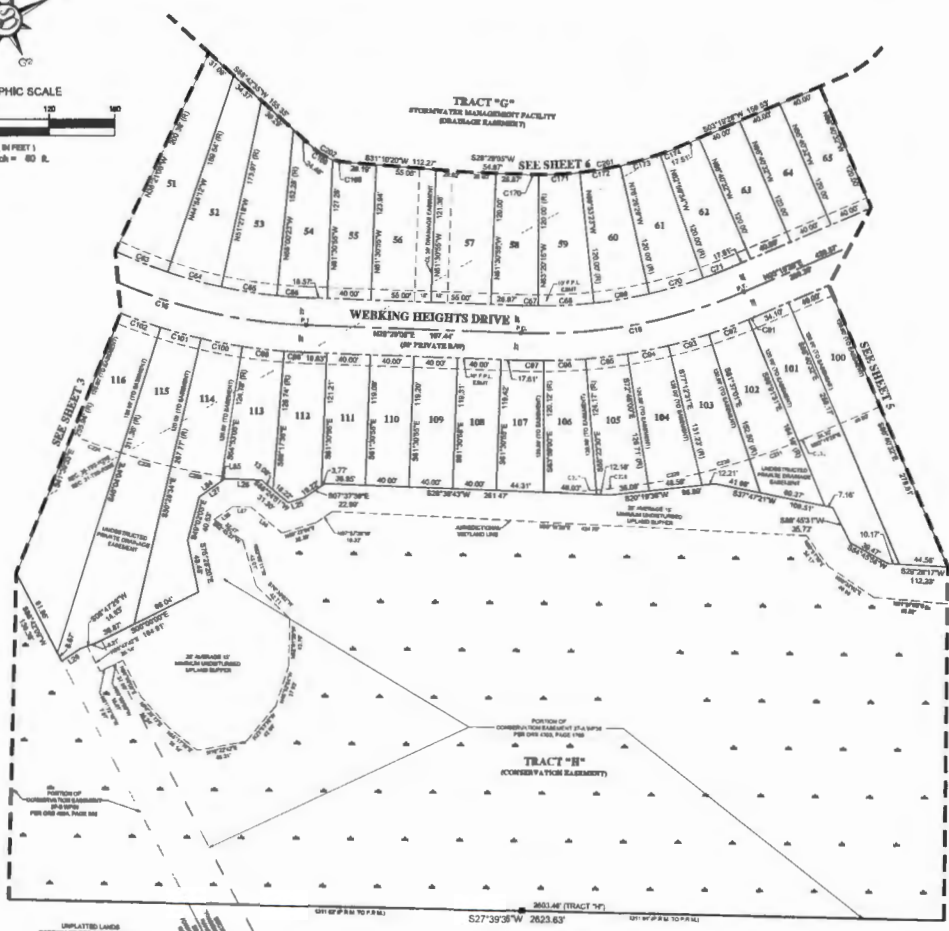
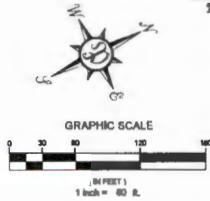
PREPARED BY:
PERRET AND ASSOCIATES, INC.
1484 MONTICELLO ROAD, JACKSONVILLE, FLORIDA 32207
PHONE (904) 805-0030 - L.B. NO. 6715

SILVERLEAF PARCEL 14A

A PORTION OF SECTION 36, TOWNSHIP 5 SOUTH, RANGE 27 EAST, A PORTION OF SECTION 1, TOWNSHIP 6 SOUTH, RANGE 27 EAST, A PORTION OF SECTION 31, TOWNSHIP 5 SOUTH, RANGE 28 EAST, TOGETHER WITH A PORTION OF SECTION 8, TOWNSHIP 6 SOUTH, RANGE 28 EAST, ST. JOHNS COUNTY, FLORIDA.

MAP BOOK _____ PAGE _____

SHEET 4 OF 9 SHEETS
SEE SHEET 2 FOR GENERAL NOTES AND LEGEND



LINE #	LENGTH	DIRECTION
L13	11.87	S27°29'38\"
L18	33.71	S27°18'30\"
L17	26.48	S27°18'30\"
L16	26.37	S27°18'30\"
L15	26.37	S27°18'30\"
L14	26.37	S27°18'30\"
L12	4.72	S27°18'30\"

CURVE #	LENGTH	BEGINN	DELTA	CHORD BEARING	CHORD
C19	288.70	478.80	32°03'34\"	N48°08'00\"	263.22
C18	288.88	475.00	32°03'34\"	N15°54'18\"	263.81
C17	81.48	455.00	8°33'50\"	N48°22'21\"	51.83
C16	81.48	488.88	8°33'50\"	N41°48'19\"	51.83
C15	81.48	488.88	8°33'50\"	N48°18'30\"	51.83
C14	27.28	488.88	8°33'50\"	N27°18'30\"	27.28
C13	143.11	488.88	1°48'31\"	N27°18'30\"	143.11
C12	81.48	488.88	8°33'50\"	N27°18'30\"	81.48
C11	81.48	488.88	8°33'50\"	N18°18'30\"	81.48
C10	81.48	488.88	8°33'50\"	N18°18'30\"	81.48
C9	26.82	488.88	8°33'50\"	N27°18'30\"	26.82
C8	8.67	888.88	8°33'50\"	N27°18'30\"	8.67
C7	26.82	888.88	8°33'50\"	N27°18'30\"	26.82
C6	26.82	888.88	8°33'50\"	N18°18'30\"	26.82
C5	26.82	888.88	8°33'50\"	N18°18'30\"	26.82
C4	26.82	500.00	8°33'50\"	N18°18'30\"	26.82
C3	26.82	500.00	8°33'50\"	N27°18'30\"	26.82
C2	21.89	888.88	8°33'50\"	N27°18'30\"	21.89
C1	16.39	888.88	8°33'50\"	N27°18'30\"	16.39
C0	26.82	888.88	8°33'50\"	N27°18'30\"	26.82
C100	26.82	888.88	8°33'50\"	N27°18'30\"	26.82
C99	26.82	888.88	8°33'50\"	N27°18'30\"	26.82
C98	26.82	888.88	8°33'50\"	N27°18'30\"	26.82
C97	26.82	888.88	8°33'50\"	N27°18'30\"	26.82
C96	26.82	888.88	8°33'50\"	N27°18'30\"	26.82
C95	26.82	888.88	8°33'50\"	N27°18'30\"	26.82
C94	26.82	888.88	8°33'50\"	N27°18'30\"	26.82
C93	26.82	888.88	8°33'50\"	N27°18'30\"	26.82
C92	26.82	888.88	8°33'50\"	N27°18'30\"	26.82
C91	26.82	888.88	8°33'50\"	N27°18'30\"	26.82
C90	26.82	888.88	8°33'50\"	N27°18'30\"	26.82
C89	26.82	888.88	8°33'50\"	N27°18'30\"	26.82
C88	26.82	888.88	8°33'50\"	N27°18'30\"	26.82
C87	26.82	888.88	8°33'50\"	N27°18'30\"	26.82
C86	26.82	888.88	8°33'50\"	N27°18'30\"	26.82
C85	26.82	888.88	8°33'50\"	N27°18'30\"	26.82
C84	26.82	888.88	8°33'50\"	N27°18'30\"	26.82
C83	26.82	888.88	8°33'50\"	N27°18'30\"	26.82
C82	26.82	888.88	8°33'50\"	N27°18'30\"	26.82
C81	26.82	888.88	8°33'50\"	N27°18'30\"	26.82
C80	26.82	888.88	8°33'50\"	N27°18'30\"	26.82
C79	26.82	888.88	8°33'50\"	N27°18'30\"	26.82
C78	26.82	888.88	8°33'50\"	N27°18'30\"	26.82
C77	26.82	888.88	8°33'50\"	N27°18'30\"	26.82
C76	26.82	888.88	8°33'50\"	N27°18'30\"	26.82
C75	26.82	888.88	8°33'50\"	N27°18'30\"	26.82
C74	26.82	888.88	8°33'50\"	N27°18'30\"	26.82
C73	26.82	888.88	8°33'50\"	N27°18'30\"	26.82
C72	26.82	888.88	8°33'50\"	N27°18'30\"	26.82
C71	26.82	888.88	8°33'50\"	N27°18'30\"	26.82
C70	26.82	888.88	8°33'50\"	N27°18'30\"	26.82
C69	26.82	888.88	8°33'50\"	N27°18'30\"	26.82
C68	26.82	888.88	8°33'50\"	N27°18'30\"	26.82
C67	26.82	888.88	8°33'50\"	N27°18'30\"	26.82
C66	26.82	888.88	8°33'50\"	N27°18'30\"	26.82
C65	26.82	888.88	8°33'50\"	N27°18'30\"	26.82
C64	26.82	888.88	8°33'50\"	N27°18'30\"	26.82
C63	26.82	888.88	8°33'50\"	N27°18'30\"	26.82
C62	26.82	888.88	8°33'50\"	N27°18'30\"	26.82
C61	26.82	888.88	8°33'50\"	N27°18'30\"	26.82
C60	26.82	888.88	8°33'50\"	N27°18'30\"	26.82
C59	26.82	888.88	8°33'50\"	N27°18'30\"	26.82
C58	26.82	888.88	8°33'50\"	N27°18'30\"	26.82
C57	26.82	888.88	8°33'50\"	N27°18'30\"	26.82
C56	26.82	888.88	8°33'50\"	N27°18'30\"	26.82
C55	26.82	888.88	8°33'50\"	N27°18'30\"	26.82
C54	26.82	888.88	8°33'50\"	N27°18'30\"	26.82
C53	26.82	888.88	8°33'50\"	N27°18'30\"	26.82
C52	26.82	888.88	8°33'50\"	N27°18'30\"	26.82
C51	26.82	888.88	8°33'50\"	N27°18'30\"	26.82
C50	26.82	888.88	8°33'50\"	N27°18'30\"	26.82
C49	26.82	888.88	8°33'50\"	N27°18'30\"	26.82
C48	26.82	888.88	8°33'50\"	N27°18'30\"	26.82
C47	26.82	888.88	8°33'50\"	N27°18'30\"	26.82
C46	26.82	888.88	8°33'50\"	N27°18'30\"	26.82
C45	26.82	888.88	8°33'50\"	N27°18'30\"	26.82
C44	26.82	888.88	8°33'50\"	N27°18'30\"	26.82
C43	26.82	888.88	8°33'50\"	N27°18'30\"	26.82
C42	26.82	888.88	8°33'50\"	N27°18'30\"	26.82
C41	26.82	888.88	8°33'50\"	N27°18'30\"	26.82
C40	26.82	888.88	8°33'50\"	N27°18'30\"	26.82
C39	26.82	888.88	8°33'50\"	N27°18'30\"	26.82
C38	26.82	888.88	8°33'50\"	N27°18'30\"	26.82
C37	26.82	888.88	8°33'50\"	N27°18'30\"	26.82
C36	26.82	888.88	8°33'50\"	N27°18'30\"	26.82
C35	26.82	888.88	8°33'50\"	N27°18'30\"	26.82
C34	26.82	888.88	8°33'50\"	N27°18'30\"	26.82
C33	26.82	888.88	8°33'50\"	N27°18'30\"	26.82
C32	26.82	888.88	8°33'50\"	N27°18'30\"	26.82
C31	26.82	888.88	8°33'50\"	N27°18'30\"	26.82
C30	26.82	888.88	8°33'50\"	N27°18'30\"	26.82
C29	26.82	888.88	8°33'50\"	N27°18'30\"	26.82
C28	26.82	888.88	8°33'50\"	N27°18'30\"	26.82
C27	26.82	888.88	8°33'50\"	N27°18'30\"	26.82
C26	26.82	888.88	8°33'50\"	N27°18'30\"	26.82
C25	26.82	888.88	8°33'50\"	N27°18'30\"	26.82
C24	26.82	888.88	8°33'50\"	N27°18'30\"	26.82
C23	26.82	888.88	8°33'50\"	N27°18'30\"	26.82
C22	26.82	888.88	8°33'50\"	N27°18'30\"	26.82
C21	26.82	888.88	8°33'50\"	N27°18'30\"	26.82
C20	26.82	888.88	8°33'50\"	N27°18'30\"	26.82
C19	26.82	888.88	8°33'50\"	N27°18'30\"	26.82
C18	26.82	888.88	8°33'50\"	N27°18'30\"	26.82
C17	26.82	888.88	8°33'50\"	N27°18'30\"	26.82
C16	26.82	888.88	8°33'50\"	N27°18'30\"	26.82
C15	26.82	888.88	8°33'50\"	N27°18'30\"	26.82
C14	26.82	888.88	8°33'50\"	N27°18'30\"	26.82
C13	26.82	888.88	8°33'50\"	N27°18'30\"	26.82
C12	26.82	888.88	8°33'50\"	N27°18'30\"	26.82
C11	26.82	888.88	8°33'50\"	N27°18'30\"	26.82
C10	26.82	888.88	8°33'50\"	N27°18'30\"	26.82
C9	26.82	888.88	8°33'50\"	N27°18'30\"	26.82
C8	26.82	888.88	8°33'50\"	N27°18'30\"	26.82
C7	26.82	888.88	8°33'50\"	N27°18'30\"	26.82
C6	26.82	888.88	8°33'50\"	N27°18'30\"	26.82
C5	26.82	888.88	8°33'50\"	N27°18'30\"	26.82
C4	26.82	888.88	8°33'50\"	N27°18'30\"	26.82
C3	26.82	888.88	8°33'50\"	N27°18'30\"	26.82
C2	26.82	888.88	8°33'50\"	N27°18'30\"	26.82
C1	26.82	888.88	8°33'50\"	N27°18'30\"	26.82

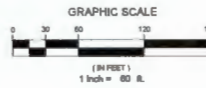
PREPARED BY:
PERRET AND ASSOCIATES, INC.
1484 MONTICELLO ROAD, JACKSONVILLE, FLORIDA 32207
PHONE (904) 925-0030 - L.B. NO. 6715

SILVERLEAF PARCEL 14A

A PORTION OF SECTION 36, TOWNSHIP 5 SOUTH, RANGE 27 EAST, A PORTION OF SECTION 1, TOWNSHIP 6 SOUTH, RANGE 27 EAST, A PORTION OF SECTION 31, TOWNSHIP 5 SOUTH, RANGE 28 EAST, TOGETHER WITH A PORTION OF SECTION 6, TOWNSHIP 6 SOUTH, RANGE 28 EAST, ST. JOHNS COUNTY, FLORIDA.

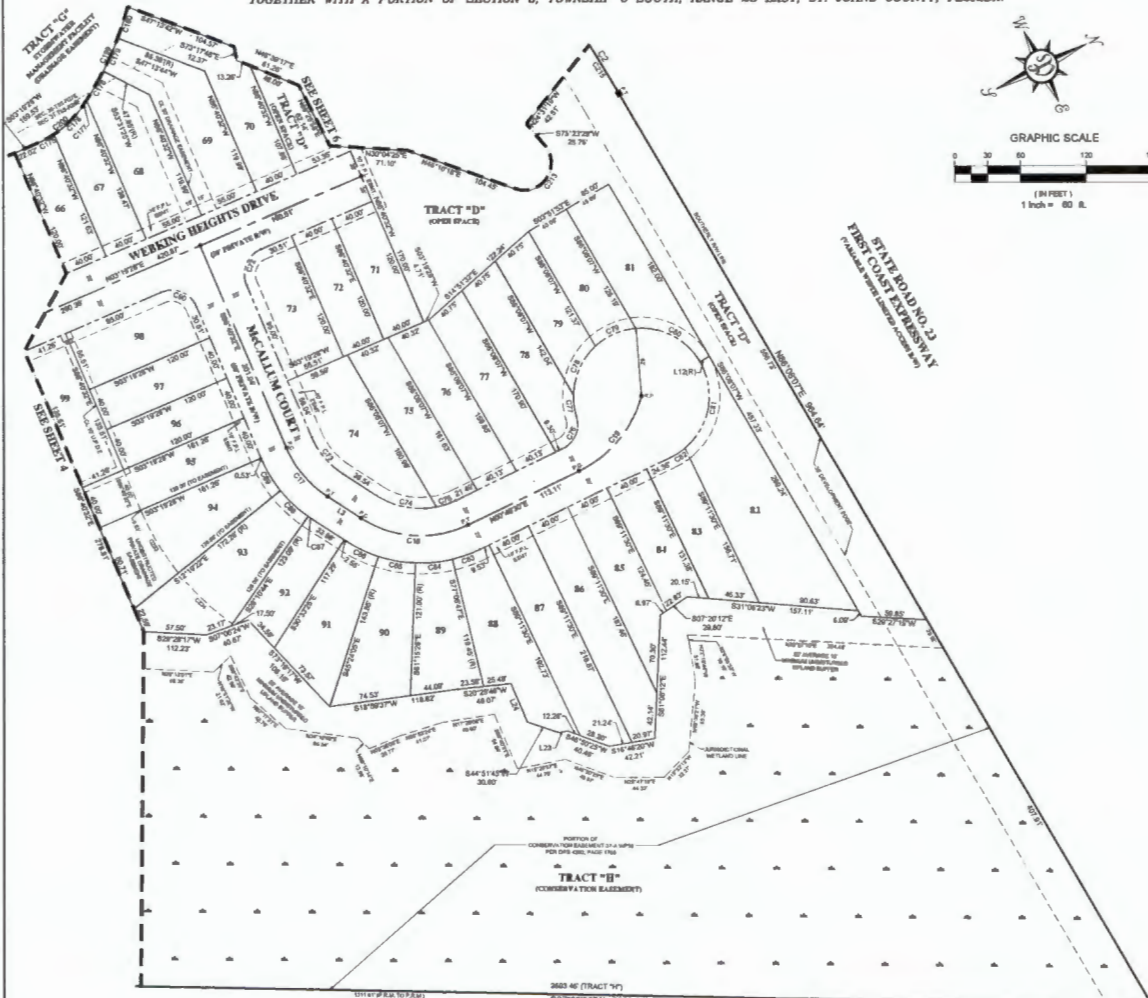
MAP BOOK _____ PAGE _____

SHEET 5 OF 9 SHEETS
(SEE SHEET 2 FOR GENERAL NOTES AND LEGEND)



LINE #	LENGTH	DIRECTION
L1	86.61	N89°30'30"E
L2	16.81	N89°51'11"W
L3	6.16	S11°29'33"W
L4	17.88	N89°43'13"W

CURVE #	LENGTH	RADIUS	DELTA	CHORD BEARING	CHORD
C2	1276.10	2136.00	34°22'50"	N89°56'30"E	1584.10
C17	68.17	100.00	32°15'57"	N79°23'37"E	38.30
C18	161.34	100.00	38°38'00"	N38°37'32"E	97.82
C19	81.80	107.00	48°07'54"	N32°43'38"W	49.82
C23	38.27	35.00	80°09'00"	S44°49'52"W	20.30
C24	44.20	75.00	28°15'57"	S76°20'17"W	43.71
C25	57.71	75.00	47°50'02"	S27°34'36"W	35.26
C26	16.80	75.00	14°33'00"	S86°08'00"W	16.80
C27	35.52	25.00	81°34'22"	S89°02'41"E	22.61
C28	16.40	42.00	18°08'28"	S71°38'52"E	16.41
C29	56.40	42.00	48°27'43"	S89°18'21"E	40.80
C30	41.80	42.00	37°28'44"	S82°08'00"W	40.20
C36	68.40	42.00	64°19'50"	S64°30'30"E	46.80
C37	68.80	42.00	80°14'22"	S22°44'00"W	37.80
C38	15.70	42.00	14°32'00"	N89°28'00"W	15.70
C39	38.20	120.00	17°54'43"	N89°38'11"E	38.20
C40	34.80	120.00	15°11'21"	N38°48'54"E	34.80
C41	34.80	120.00	15°11'21"	N38°48'54"E	34.80
C42	33.20	120.00	14°59'00"	N32°18'18"E	33.20
C47	5.10	120.00	2°22'01"	N89°37'30"E	5.10
C48	34.20	120.00	17°51'22"	N89°44'57"E	34.20
C49	34.14	120.00	15°18'00"	N89°38'00"E	34.14
C50	38.27	35.00	80°09'00"	S44°49'52"W	20.30
C15	10.80	100.00	12°11'40"	N81°31'28"W	10.80
C16	38.80	100.00	22°33'40"	N76°38'00"W	38.70
C17	3.70	300.00	3°42'00"	N39°17'30"W	3.70
C18	38.40	300.00	9°48'18"	N32°25'00"W	38.47
C19	22.80	300.00	5°17'41"	N38°37'30"E	22.84
C20	38.80	300.00	9°34'21"	N48°38'30"W	38.84
C21	67.27	300.00	18°34'22"	N39°17'30"W	68.64
C22	58.80	100.00	32°17'00"	N19°18'18"W	57.22
C23	63.70	25.00	108°46'40"	N39°18'00"W	48.20
C24	103.80	210.00	4°54'00"	S82°38'30"W	103.80
C25	68.81	240.00	15°18'00"	S89°38'00"E	68.70
C26	67.80	240.00	15°11'22"	N89°44'57"E	67.80



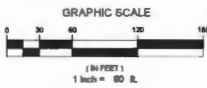
PREPARED BY:
PERRET AND ASSOCIATES, INC.
1484 MONTICELLO ROAD, JACKSONVILLE, FLORIDA 32207
PHONE (904) 805-0030 - L.B. NO. 8715

SILVERLEAF PARCEL 14A

A PORTION OF SECTION 36, TOWNSHIP 5 SOUTH, RANGE 27 EAST, A PORTION OF SECTION 1, TOWNSHIP 6 SOUTH, RANGE 27 EAST, A PORTION OF SECTION 31, TOWNSHIP 5 SOUTH, RANGE 28 EAST, TOGETHER WITH A PORTION OF SECTION 8, TOWNSHIP 6 SOUTH, RANGE 28 EAST, ST. JOHNS COUNTY, FLORIDA.

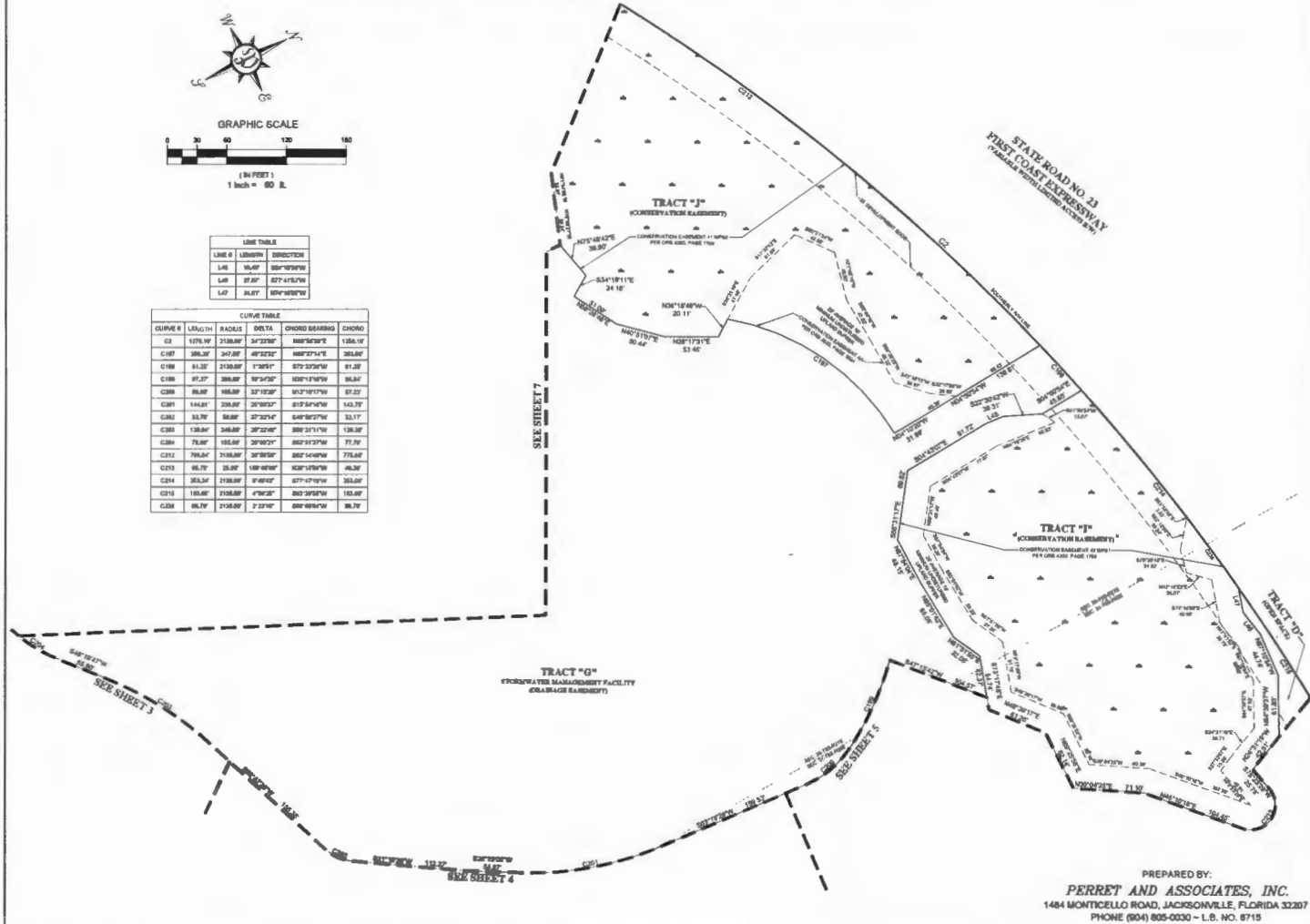
MAP BOOK _____ PAGE _____

SHEET 6 OF 9 SHEETS
(SEE SHEET 2 FOR GENERAL NOTES AND LEGEND)



LINE #	LENGTH	DIRECTION
L48	84.87	S89°49'30"W
L49	87.87	S77°41'57"W
L50	84.87	N89°49'30"W

CURVE #	LENGTH	RADIUS	DELTA	CHORD BEARING	CHORD
C2	1276.16	2138.88	34°22'50"	N89°58'30"E	1384.18
C187	388.36	347.88	60°22'52"	N89°57'14"E	388.88
C188	81.32	2138.88	1°38'51"	S77°32'30"W	81.32
C189	87.37	388.88	97°32'50"	S28°17'30"W	88.88
C190	88.88	388.88	37°12'50"	S12°19'17"W	87.37
C191	148.88	2138.88	20°00'27"	S77°24'00"W	152.78
C192	32.78	88.88	57°22'54"	S48°50'27"W	32.77
C193	138.88	348.88	28°22'00"	S88°21'11"W	138.88
C194	78.88	188.88	38°00'21"	S82°12'27"W	77.78
C195	788.88	2138.88	28°00'28"	S82°14'00"W	775.88
C196	88.78	28.88	188°48'00"	S28°12'30"W	88.38
C197	388.36	2138.88	6°48'02"	S77°42'18"W	388.88
C198	188.88	2138.88	7°38'28"	S82°38'30"W	188.88
C199	88.78	2138.88	7°32'00"	S89°49'30"W	88.78



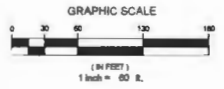
PREPARED BY:
PERRET AND ASSOCIATES, INC.
1484 MONTICELLO ROAD, JACKSONVILLE, FLORIDA 32207
PHONE (904) 805-0030 - L.B. NO. 8713

SILVERLEAF PARCEL 14A

A PORTION OF SECTION 36, TOWNSHIP 5 SOUTH, RANGE 27 EAST, A PORTION OF SECTION 1, TOWNSHIP 6 SOUTH, RANGE 27 EAST, A PORTION OF SECTION 31, TOWNSHIP 5 SOUTH, RANGE 28 EAST, TOGETHER WITH A PORTION OF SECTION 6, TOWNSHIP 6 SOUTH, RANGE 28 EAST, ST. JOHNS COUNTY, FLORIDA.

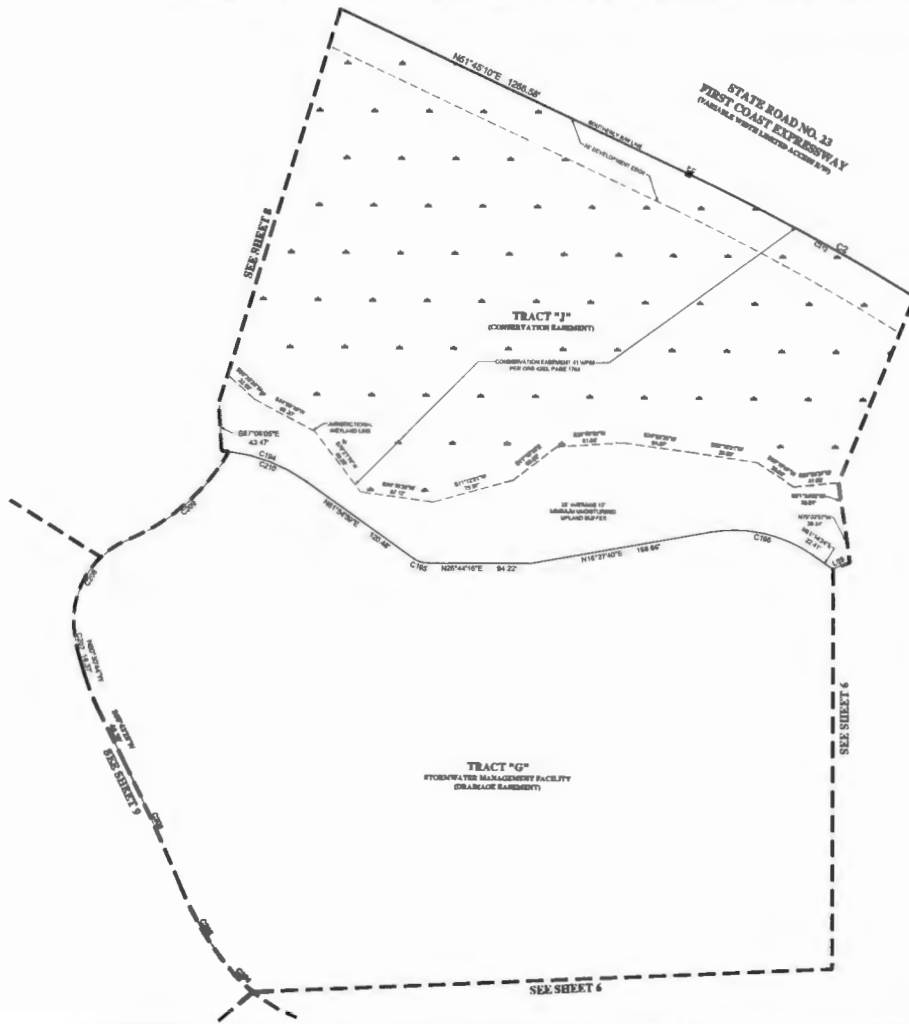
MAP BOOK _____ PAGE _____

SHEET 7 OF 9 SHEETS
(SEE SHEET 2 FOR GENERAL NOTES AND LEGEND)



LINE TABLE			
LINE #	LENGTH	BEARING	SECTION
L1	15.00	N81°22'27"E	

CURVE TABLE					
CURVE #	LENGTH	RADIUS	DELTA	CHORD BEARING	CHORD
C2	178.10	2150.00	57°22'28"	N87°58'56"E	138.10
C104	85.64	153.00	31°51'48"	S47°09'00"W	83.80
C106	14.17	25.00	38°08'42"	S44°18'00"E	13.80
C108	68.30	127.00	44°48'54"	N83°51'00"E	68.70
C204	78.00	158.00	28°02'21"	S42°51'00"W	77.20
C206	85.00	388.00	16°28'48"	S88°37'00"W	83.30
C208	128.14	1680.00	4°30'14"	N88°17'00"W	130.51
C209	38.57	125.00	17°51'51"	S74°31'00"E	38.70
C210	188.00	68.00	72°19'00"	S52°34'00"W	94.20
C211	126.10	163.00	37°05'42"	N14°38'00"W	123.80
C212	78.77	153.00	38°08'00"	S47°27'00"W	75.80
C213	78.04	218.00	38°08'00"	S42°14'00"W	77.60



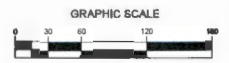
PREPARED BY:
PERRET AND ASSOCIATES, INC.
1484 MONTICELLO ROAD, JACKSONVILLE, FLORIDA 32207
PHONE (904) 805-0030 - L.B. NO. 8715

SILVERLEAF PARCEL 14A

A PORTION OF SECTION 36, TOWNSHIP 5 SOUTH, RANGE 27 EAST, A PORTION OF SECTION 1, TOWNSHIP 8 SOUTH, RANGE 27 EAST, A PORTION OF SECTION 31, TOWNSHIP 5 SOUTH, RANGE 28 EAST, TOGETHER WITH A PORTION OF SECTION 6, TOWNSHIP 6 SOUTH, RANGE 28 EAST, ST. JOHNS COUNTY, FLORIDA.

MAP BOOK _____ PAGE _____

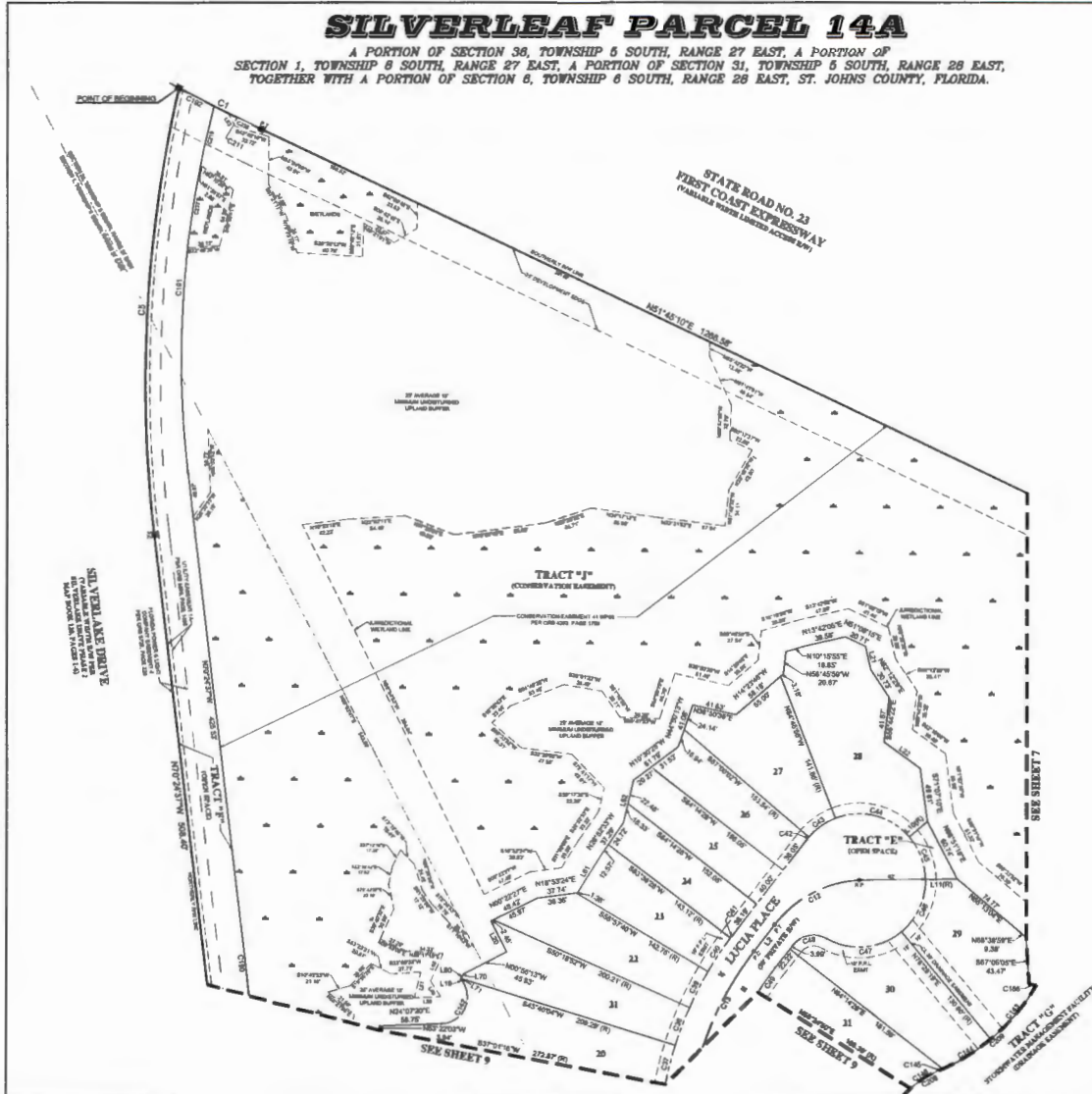
SHEET 6 OF 9 SHEETS
(SEE SHEET 2 FOR GENERAL NOTES AND LEGEND)



LINE #	LENGTH	DIRECTION
L1	31.38	S82°42'32"E
L10	22.32	S14°32'30"W
L11	38.62	S02°28'00"W
L12	1.28	S70°18'00"W
L13	31.82	S88°55'47"W
L21	32.38	S78°38'36"E
L22	42.38	N81°18'00"E
L23	37.82	S28°38'42"E
L24	17.28	N82°21'18"E
L25	24.82	S24°37'30"W
L31	24.82	N88°23'30"W
L32	1.28	S88°23'30"W
L33	48.82	N51°18'00"W
L34	54.82	S87°17'30"W
L35	4.18	N87°38'42"W
L36	6.78	N87°38'42"W

CURVE #	LENGTH	RADIUS	DELTA	CHORD BEARING	CHORD
C1	95.82	2654.00	2°51'30"	N82°42'32"E	88.34
C2	418.82	1388.00	10°31'30"	N88°38'30"W	418.24
C3	81.88	167.88	48°07'12"	S01°11'32"E	85.62
C4	288.88	388.88	88°47'12"	S11°09'22"E	237.24
C5	37.78	388.88	1°38'00"	S88°38'36"E	37.88
C6	37.78	388.88	1°38'00"	S88°38'36"E	37.88
C7	37.78	388.88	1°38'00"	S88°38'36"E	37.88
C8	37.78	388.88	1°38'00"	S88°38'36"E	37.88
C9	37.78	388.88	1°38'00"	S88°38'36"E	37.88
C10	37.78	388.88	1°38'00"	S88°38'36"E	37.88
C11	37.78	388.88	1°38'00"	S88°38'36"E	37.88
C12	37.78	388.88	1°38'00"	S88°38'36"E	37.88
C13	37.78	388.88	1°38'00"	S88°38'36"E	37.88
C14	37.78	388.88	1°38'00"	S88°38'36"E	37.88
C15	37.78	388.88	1°38'00"	S88°38'36"E	37.88
C16	37.78	388.88	1°38'00"	S88°38'36"E	37.88
C17	37.78	388.88	1°38'00"	S88°38'36"E	37.88
C18	37.78	388.88	1°38'00"	S88°38'36"E	37.88
C19	37.78	388.88	1°38'00"	S88°38'36"E	37.88
C20	37.78	388.88	1°38'00"	S88°38'36"E	37.88
C21	37.78	388.88	1°38'00"	S88°38'36"E	37.88
C22	37.78	388.88	1°38'00"	S88°38'36"E	37.88
C23	37.78	388.88	1°38'00"	S88°38'36"E	37.88
C24	37.78	388.88	1°38'00"	S88°38'36"E	37.88
C25	37.78	388.88	1°38'00"	S88°38'36"E	37.88
C26	37.78	388.88	1°38'00"	S88°38'36"E	37.88
C27	37.78	388.88	1°38'00"	S88°38'36"E	37.88
C28	37.78	388.88	1°38'00"	S88°38'36"E	37.88
C29	37.78	388.88	1°38'00"	S88°38'36"E	37.88
C30	37.78	388.88	1°38'00"	S88°38'36"E	37.88
C31	37.78	388.88	1°38'00"	S88°38'36"E	37.88
C32	37.78	388.88	1°38'00"	S88°38'36"E	37.88
C33	37.78	388.88	1°38'00"	S88°38'36"E	37.88
C34	37.78	388.88	1°38'00"	S88°38'36"E	37.88
C35	37.78	388.88	1°38'00"	S88°38'36"E	37.88
C36	37.78	388.88	1°38'00"	S88°38'36"E	37.88
C37	37.78	388.88	1°38'00"	S88°38'36"E	37.88
C38	37.78	388.88	1°38'00"	S88°38'36"E	37.88
C39	37.78	388.88	1°38'00"	S88°38'36"E	37.88
C40	37.78	388.88	1°38'00"	S88°38'36"E	37.88
C41	37.78	388.88	1°38'00"	S88°38'36"E	37.88
C42	37.78	388.88	1°38'00"	S88°38'36"E	37.88
C43	37.78	388.88	1°38'00"	S88°38'36"E	37.88
C44	37.78	388.88	1°38'00"	S88°38'36"E	37.88
C45	37.78	388.88	1°38'00"	S88°38'36"E	37.88
C46	37.78	388.88	1°38'00"	S88°38'36"E	37.88
C47	37.78	388.88	1°38'00"	S88°38'36"E	37.88
C48	37.78	388.88	1°38'00"	S88°38'36"E	37.88
C49	37.78	388.88	1°38'00"	S88°38'36"E	37.88
C50	37.78	388.88	1°38'00"	S88°38'36"E	37.88
C51	37.78	388.88	1°38'00"	S88°38'36"E	37.88
C52	37.78	388.88	1°38'00"	S88°38'36"E	37.88
C53	37.78	388.88	1°38'00"	S88°38'36"E	37.88
C54	37.78	388.88	1°38'00"	S88°38'36"E	37.88
C55	37.78	388.88	1°38'00"	S88°38'36"E	37.88
C56	37.78	388.88	1°38'00"	S88°38'36"E	37.88
C57	37.78	388.88	1°38'00"	S88°38'36"E	37.88
C58	37.78	388.88	1°38'00"	S88°38'36"E	37.88
C59	37.78	388.88	1°38'00"	S88°38'36"E	37.88
C60	37.78	388.88	1°38'00"	S88°38'36"E	37.88
C61	37.78	388.88	1°38'00"	S88°38'36"E	37.88
C62	37.78	388.88	1°38'00"	S88°38'36"E	37.88
C63	37.78	388.88	1°38'00"	S88°38'36"E	37.88
C64	37.78	388.88	1°38'00"	S88°38'36"E	37.88
C65	37.78	388.88	1°38'00"	S88°38'36"E	37.88
C66	37.78	388.88	1°38'00"	S88°38'36"E	37.88
C67	37.78	388.88	1°38'00"	S88°38'36"E	37.88
C68	37.78	388.88	1°38'00"	S88°38'36"E	37.88
C69	37.78	388.88	1°38'00"	S88°38'36"E	37.88
C70	37.78	388.88	1°38'00"	S88°38'36"E	37.88
C71	37.78	388.88	1°38'00"	S88°38'36"E	37.88
C72	37.78	388.88	1°38'00"	S88°38'36"E	37.88
C73	37.78	388.88	1°38'00"	S88°38'36"E	37.88
C74	37.78	388.88	1°38'00"	S88°38'36"E	37.88
C75	37.78	388.88	1°38'00"	S88°38'36"E	37.88
C76	37.78	388.88	1°38'00"	S88°38'36"E	37.88
C77	37.78	388.88	1°38'00"	S88°38'36"E	37.88
C78	37.78	388.88	1°38'00"	S88°38'36"E	37.88
C79	37.78	388.88	1°38'00"	S88°38'36"E	37.88
C80	37.78	388.88	1°38'00"	S88°38'36"E	37.88
C81	37.78	388.88	1°38'00"	S88°38'36"E	37.88
C82	37.78	388.88	1°38'00"	S88°38'36"E	37.88
C83	37.78	388.88	1°38'00"	S88°38'36"E	37.88
C84	37.78	388.88	1°38'00"	S88°38'36"E	37.88
C85	37.78	388.88	1°38'00"	S88°38'36"E	37.88
C86	37.78	388.88	1°38'00"	S88°38'36"E	37.88
C87	37.78	388.88	1°38'00"	S88°38'36"E	37.88
C88	37.78	388.88	1°38'00"	S88°38'36"E	37.88
C89	37.78	388.88	1°38'00"	S88°38'36"E	37.88
C90	37.78	388.88	1°38'00"	S88°38'36"E	37.88
C91	37.78	388.88	1°38'00"	S88°38'36"E	37.88
C92	37.78	388.88	1°38'00"	S88°38'36"E	37.88
C93	37.78	388.88	1°38'00"	S88°38'36"E	37.88
C94	37.78	388.88	1°38'00"	S88°38'36"E	37.88
C95	37.78	388.88	1°38'00"	S88°38'36"E	37.88
C96	37.78	388.88	1°38'00"	S88°38'36"E	37.88
C97	37.78	388.88	1°38'00"	S88°38'36"E	37.88
C98	37.78	388.88	1°38'00"	S88°38'36"E	37.88
C99	37.78	388.88	1°38'00"	S88°38'36"E	37.88
C100	37.78	388.88	1°38'00"	S88°38'36"E	37.88

PREPARED BY:
PERRET AND ASSOCIATES, INC.
1484 MONTICELLO ROAD, JACKSONVILLE, FLORIDA 32207
PHONE (904) 825-0330 - L.B. NO. 6715

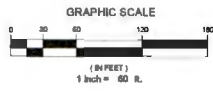
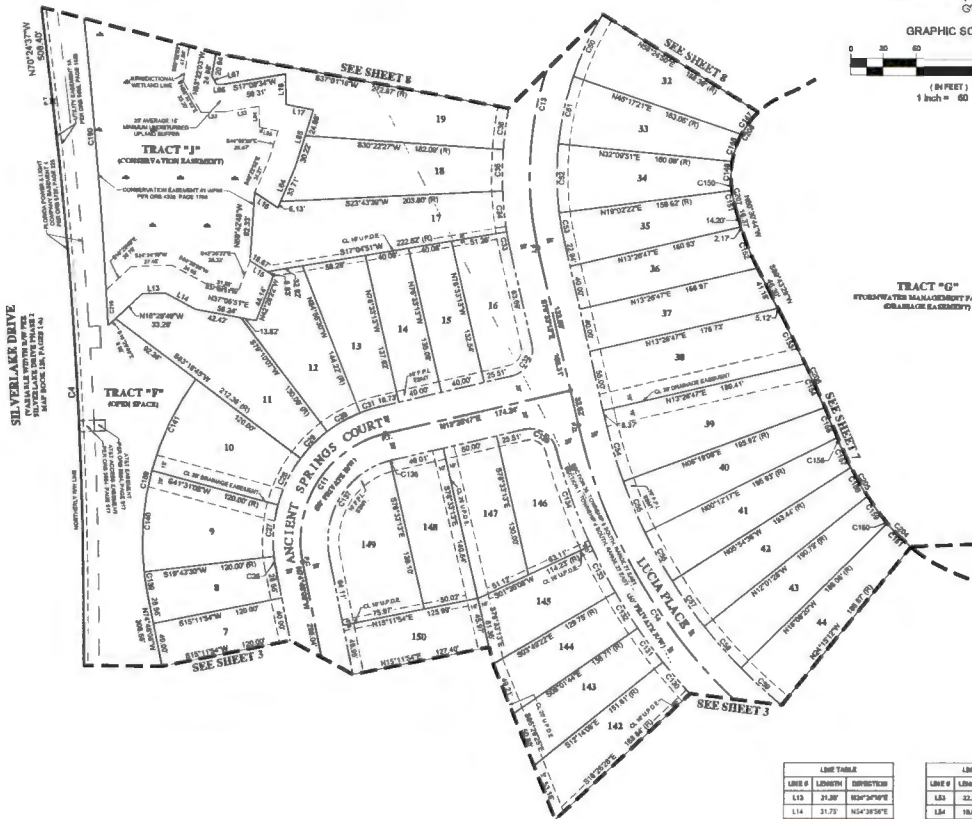


SILVERLEAF PARCEL 14A

A PORTION OF SECTION 36, TOWNSHIP 5 SOUTH, RANGE 27 EAST, A PORTION OF SECTION 1, TOWNSHIP 6 SOUTH, RANGE 27 EAST, A PORTION OF SECTION 31, TOWNSHIP 5 SOUTH, RANGE 28 EAST, TOGETHER WITH A PORTION OF SECTION 6, TOWNSHIP 6 SOUTH, RANGE 28 EAST, ST. JOHNS COUNTY, FLORIDA.

MAP BOOK _____ PAGE _____

SHEET 6 OF 9 SHEETS
(SEE SHEET 2 FOR GENERAL NOTES AND LEGEND)



CURVE #	LENGTH	RADIUS	DELTA	CHORD BEARINGS	CHORD
C4	83.19	488.89	7.3497	N67.2727W	83.17
C11	154.62	189.89	87.1432	S69.4849W	138.26
C13	286.26	366.89	59.4741	S81.9822E	287.24
C14	351.39	440.89	42.9459	N87.9492E	348.71
C28	6.87	135.89	4.3132	S72.5178E	6.87
C27	47.83	135.89	31.4737	S69.2214E	43.26
C38	47.83	135.89	31.4737	S27.8837E	43.26
C39	64.89	135.89	18.9122	S18.4834E	54.48
C38	64.89	135.89	18.9122	S82.5111E	54.48
C31	16.37	135.89	6.2677	S89.1498W	16.37
C23	16.37	135.89	6.2677	S81.9127E	16.37
C22	38.62	315.89	3.7854	S15.4411E	38.62
C24	32.59	325.89	6.7848	S69.2848E	32.59
C25	37.79	325.89	6.7848	S62.8929E	37.79
C26	37.79	325.89	6.7848	S58.1978E	37.79
C39	62.89	378.89	13.9739	S38.9854E	62.89
C31	62.89	378.89	13.9739	S51.1824E	62.89
C82	62.89	378.89	13.9739	S44.2332E	62.89
C23	36.62	378.89	5.2888	S72.4829E	36.62
C24	38.69	475.89	7.7078	S69.2829E	38.69
C38	38.69	475.89	6.8932	S66.4472E	38.69
C37	38.69	475.89	6.8932	S67.8851E	38.69
C37	38.69	475.89	6.8932	S61.9158E	38.69
C38	38.69	475.89	6.8932	S74.1816E	38.69
C39	38.69	475.89	6.8932	S68.4874E	38.69
C199	38.62	525.00	4.1722	S79.3824E	38.62
C197	38.62	525.00	4.1722	S79.3824E	38.62
C192	38.62	525.00	4.1722	S69.5472E	38.62
C193	48.19	525.00	5.1930	S69.8222E	48.19
C194	68.49	525.00	6.6159	S67.2722E	68.49
C195	88.79	525.00	8.1130	S67.2722E	88.79
C196	8.87	75.89	6.4238	S13.9492E	8.87
C137	114.62	75.89	87.3824	S61.6738W	103.72
C128	86.39	248.89	6.7537	S72.2142E	86.39
C146	86.39	248.89	6.7537	S69.2442E	86.39
C147	86.39	248.89	6.7537	S67.2722E	86.39
C148	86.39	248.89	6.7537	S65.2442E	86.39
C149	86.39	248.89	6.7537	S63.2142E	86.39
C150	86.39	248.89	6.7537	S61.1842E	86.39
C151	86.39	248.89	6.7537	S59.1542E	86.39
C152	86.39	248.89	6.7537	S57.1242E	86.39
C153	86.39	248.89	6.7537	S55.0942E	86.39
C154	86.39	248.89	6.7537	S53.0642E	86.39
C155	86.39	248.89	6.7537	S51.0342E	86.39
C156	86.39	248.89	6.7537	S48.9942E	86.39
C157	86.39	248.89	6.7537	S46.9642E	86.39
C158	86.39	248.89	6.7537	S44.9242E	86.39
C159	86.39	248.89	6.7537	S42.8942E	86.39
C160	86.39	248.89	6.7537	S40.8542E	86.39
C161	86.39	248.89	6.7537	S38.8242E	86.39
C162	86.39	248.89	6.7537	S36.7842E	86.39
C163	86.39	248.89	6.7537	S34.7542E	86.39
C164	86.39	248.89	6.7537	S32.7142E	86.39
C165	86.39	248.89	6.7537	S30.6842E	86.39
C166	86.39	248.89	6.7537	S28.6442E	86.39
C167	86.39	248.89	6.7537	S26.6142E	86.39
C168	86.39	248.89	6.7537	S24.5742E	86.39
C169	86.39	248.89	6.7537	S22.5442E	86.39
C170	86.39	248.89	6.7537	S20.5042E	86.39
C171	86.39	248.89	6.7537	S18.4742E	86.39
C172	86.39	248.89	6.7537	S16.4342E	86.39
C173	86.39	248.89	6.7537	S14.4042E	86.39
C174	86.39	248.89	6.7537	S12.3642E	86.39
C175	86.39	248.89	6.7537	S10.3342E	86.39
C176	86.39	248.89	6.7537	S8.2942E	86.39
C177	86.39	248.89	6.7537	S6.2642E	86.39
C178	86.39	248.89	6.7537	S4.2242E	86.39
C179	86.39	248.89	6.7537	S2.1942E	86.39
C180	86.39	248.89	6.7537	S0.1542E	86.39

LINE #	LENGTH	DIRECTION
L13	21.89	S82.2479E
L14	31.73	N54.2839E
L15	25.50	S19.1419W
L16	38.37	N69.2329E
L17	34.89	S37.2819W
L18	27.24	S64.3899W
L19	21.38	N67.1192E

LINE #	LENGTH	DIRECTION
L2	32.21	N17.2834E
L3	18.89	S64.2839E
L4	17.73	N67.2839E
L5	38.84	N42.2379W
L6	54.89	N49.2839W
L7	4.89	S17.2839W
L8	8.27	S62.2379W

PREPARED BY:
PERRET AND ASSOCIATES, INC.
1484 MONTICELLO ROAD, JACKSONVILLE, FLORIDA 32207
PHONE (804) 865-0030 - L.B. NO. 6715